

# LOST & FOUND

A couple rebuilds — and recommits to their love of log homes — following a devastating tornado in Kentucky.

From tragedy rose triumph. On a quiet evening in December of 2021, Tim and Jane Lewis received startling news from friends who were staying at their log home in western Kentucky. They were winding down at home in San Diego, California, when a text message changed everything. “Not sure if you knew,” it read, “Tornado hit the cabin. Everything is gone.”

Staring at one another in disbelief, they were relieved that everyone was safe, but within hours the scope of the disaster was revealed. The so-called Mayfield Tornado, a powerful

**INSET** In December 2021, the Mayfield Tornado began in north-west Tennessee and traveled northeast across the western edge of Kentucky, leaving a path of destruction as seen here on the Lewises' property.



The idyllic cabin glows at twilight, beckoning all who visit to the outdoor seating area, wrap-around deck and spacious patio.





The fireplace is a focal point of the great room, where log walls and exposed beams infuse stately character into the gathering space.

EF-4 with winds over 190 miles per hour, had devastated the serene countryside, tearing a swath of destruction 165 miles long.

When they reached Kentucky, Tim and Jane were overwhelmed by what they saw. “The scene was almost surreal,” says Tim. “Trees were stripped bare. Foundations were all that remained of once sturdy homes. Our beloved log cabin—filled with years of laughter, family gatherings and sunsets over the lake—was reduced to rubble.”

Despite the shock, the Lewises were determined to rebuild, and in March of 2022, they spent two weeks traveling through the heart of log home country. Driving from South Carolina to Pennsylvania, the couple toured mills and gathered ideas for their rekindled dream. By the end, Timberhaven Log Homes in Pennsylvania, alongside Gabriel Reed, a sales representative for Reed’s Log Homes in Eddyville, Kentucky, proved to be the perfect combination to set their new project in motion.

Their re-created home, set on the same one-acre lot overlooking picturesque Kentucky Lake, is christened “Lake ’n Logs,” and according to Tim, the home tells the stories of their family. For example, the Route 66 Room pays homage to a two-week road trip the couple once took along the Mother Road. The Fishing Room nods to their love of the lake. “There’s a California Room—a tribute to our West Coast home, and an American Room that proudly displays the Bill of Rights and the Declaration of Independence—a reflection of our deep patriotism,” he notes. Downstairs, another





**ABOVE** Open to the great room and surrounding spaces, the efficient kitchen includes a breakfast bar and ample cabinetry in a rich sage green, with Maytag appliances and granite countertops punctuating the simple space.

room honors Tim's 20 years as a U.S. Navy pilot, complete with photos and memorabilia.

In rebuilding, the Lewises worked with Gabrial to replicate their original floor plan, staying relatively small but functional while reflecting their preferences and passion for log home living. "They wanted the same home built back in the same spot," she says. "They had the original construction floor plans, and we made a few suggestions to improve the layout of the primary suite and added an additional bedroom suite."

The updated design boasts six bedrooms and four-and-a-half baths. "Although the footprint isn't large, three stories provide plenty of space for entertaining, including a great room and screened-in porch on the first floor and a large rec room in the basement," explains Gabrial. The lakeside beauty encompasses 1,901 square feet with an additional 1,500 square feet of finished basement. Outside, 976 square feet of porches and decks frame the living space with inviting outdoor access.



**BELOW** Pine beams are on full display in the almost cathedral-like great room, illuminated by the abundant natural light and inconspicuous fixtures.





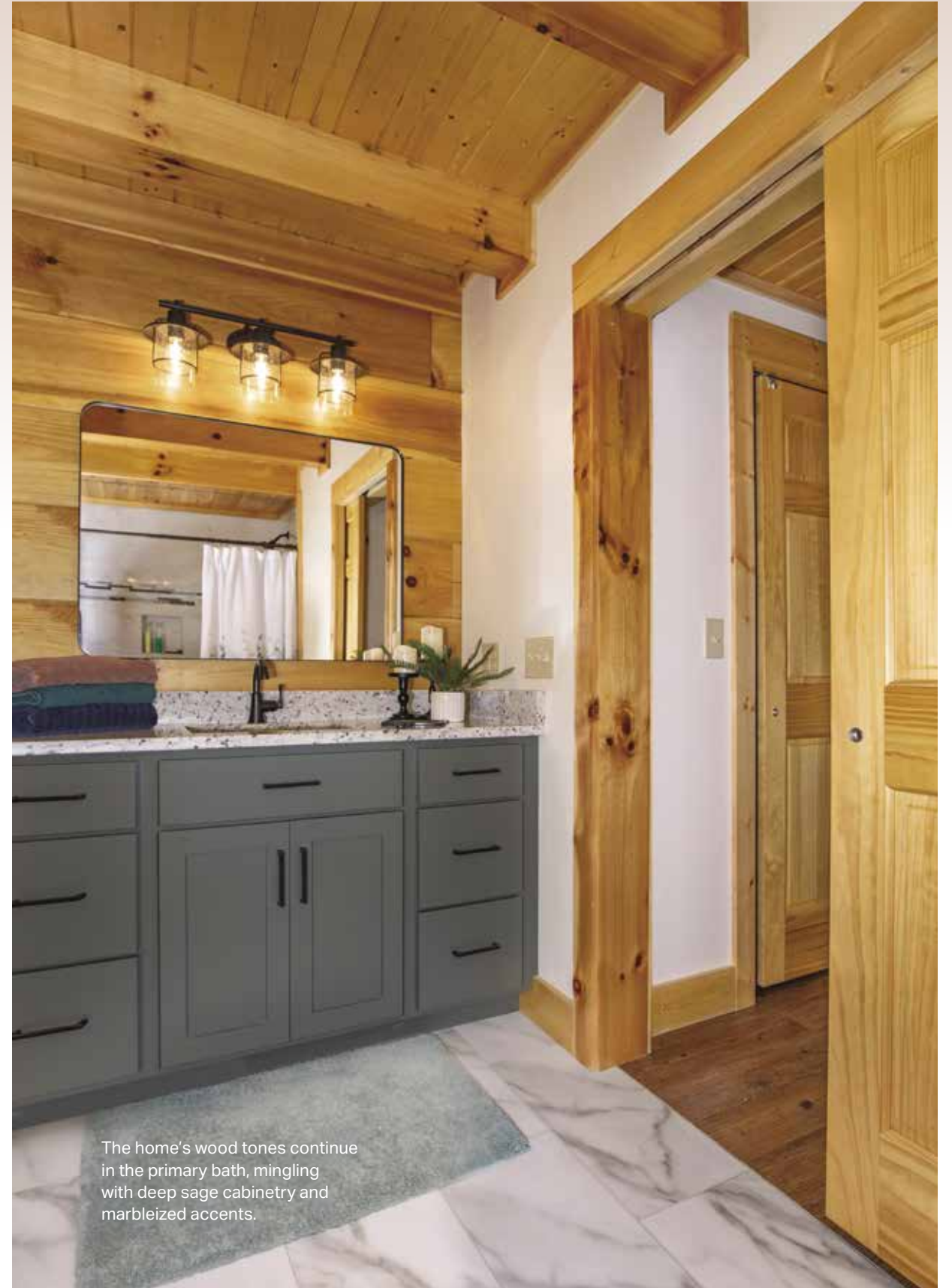
**LEFT** The cozy loft, with a reading nook and game table for puzzles or checkers, connects two bedrooms and a full bathroom upstairs. It's also the ideal lookout to the waterfront.



**RIGHT** The primary bedroom, conveniently located on the main floor, is elegant in its simplicity. Richly hued luxury vinyl tile flooring mimics the look of hardwood with practicality and affordability in mind.

Now, the couple is happily retired and divide their time between California and Kentucky, six months in either locale. After experiencing such loss, the Lewises affirm that the “soul of the cabin lies in what was salvaged.” Two irreplaceable treasures were rescued from the debris, a table Tim had built from his grandfather’s barnwood and the dining room table handcrafted by Jane’s

father. Such keepsakes serve as the cornerstones for new memories, a renewal of the peace and natural splendor that no storm could erase. “From the deck overlooking the lake, we often reflect on what we lost—and what we found,” Tim offers. “We lost a house,” Jane observes, “but we never lost our home. That was always in our hearts.”



The home’s wood tones continue in the primary bath, mingling with deep sage cabinetry and marbleized accents.





**ABOVE** The Lewis home is constructed of kiln-dried Timberhaven D-shaped 8-by-12-inch white pine logs with dovetail corners. The Timberhaven R-38 roof system complements Andersen windows and Therma-Tru doors, standard in the Timberhaven package.

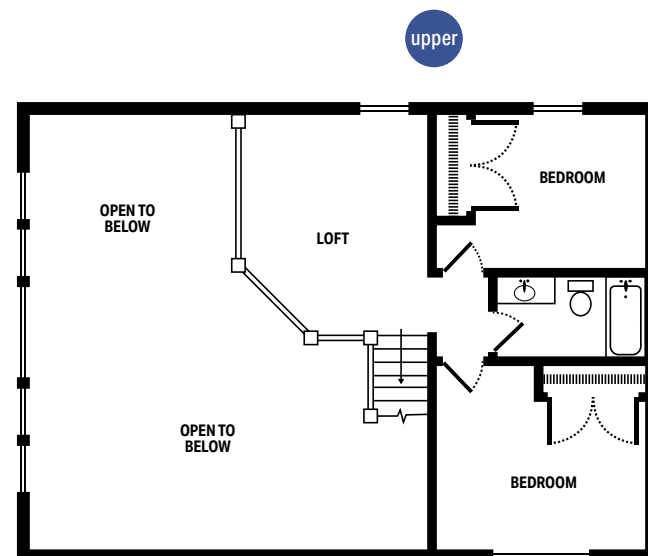
## DETAILS

HOME

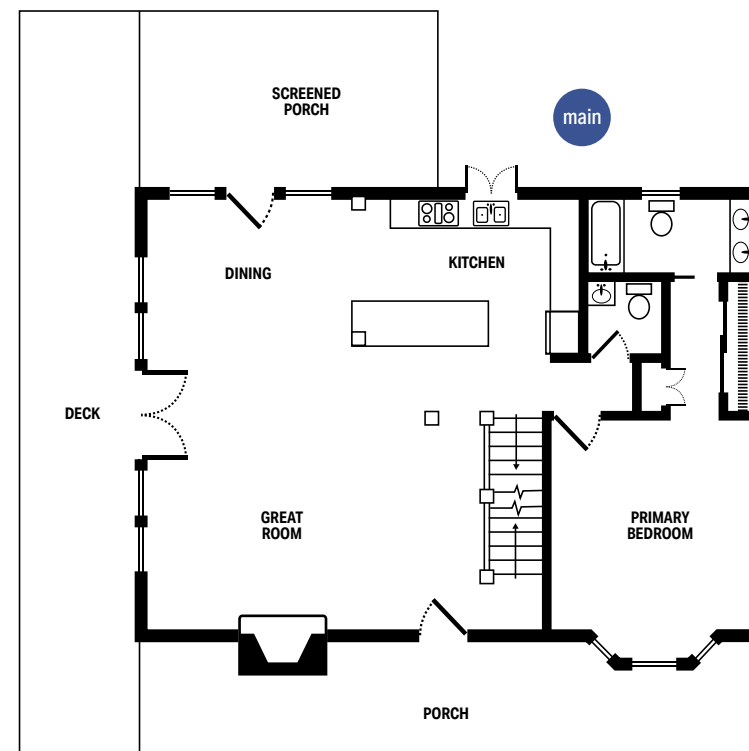
3,401 sq. ft. | BR: 6 BA: 4 full, 1 half

### DESIGN/TIMBER PROVIDER

Timberhaven Log & Timber Homes  
timberhavenloghomes.com



Lower level floor plan not shown



**ABOVE LEFT** A sweeping vista of Kentucky Lake greets visitors from the extensive wraparound deck. According to builder Gabrial Reed, the Mayfield Tornado cleared trees that once obstructed the view.

**ABOVE** The finished basement is outfitted with vintage signs and plenty of indoor recreation.