

IS YOUR HOME'S DECK READY FOR SPRING?

LOG & TIMBER HOME LIVING

GREAT Getaways

Design, Build & Protect
Your Retreat

20
FLOOR
PLANS
Find Your
Home Here!

PARKITECTURE STYLE

- what it is
- where to see it
- how to get it

WIN THE WAR AGAINST
CARPENTER BEES!

5 Tips for Long Distance Building

MARCH 2025
\$7.99US \$8.99CAN

03>



0 92567 39198 1
Display Until April 8, 2025

According to the Hendries, working with a professional landscaper to install the hardscaping features around the home was worth the investment. "There was no landscaping after we first built, and Steve would say, 'The house is so beautiful, but the surrounding area looks messy,'" Karen shares. "Now, we can't think of a view we don't like."



50



Together Again

This log home getaway invites a couple living in two different states to come together and reconnect.

By Suzanna Logan | Photography by Brett Hosterman

For Steve Hendrie, arriving at his log home in the West Virginia mountains feels like a sweet reward. Not only is he reunited with his wife, Karen, who relocated to the home full-time after her early retirement, he's also immersed in the wonder of nature — rolling hills, dense forests and sweeping valley views — during his three-hour trek from his full-time residence in Hershey, Pennsylvania. “There is a part of the drive where you hit the open highway coming into the mountains, and as soon as I hit that spot, I just feel lighter, every single time,” he says. “It’s the juxtaposition between being busy at work and then pulling into the driveway and being in the woods, surrounded by the quiet and just being at peace.”

“Once you’re actually in our neighborhood, we are still a good 15

minutes down a gravel road,” Karen elaborates on the trek to the cabin. “You pass creeks and about a thousand deer. There are no mailboxes or streetlights, so it really is an adventure to get here.”

The house is worth the effort — a warm, welcoming log retreat nestled into 20 acres of secluded serenity. Despite its very private setting, it benefits from being contained within a residential neighborhood and having quick access to plenty of outdoor adventures the couple can enjoy together. Proximity to the south branch of the Potomac River makes kayaking and tubing easy pursuits, while the generous acreage gives the couple plenty of reason to explore the ATV trails traversing their land. “We looked at a lot of properties with amazing views, but our land is flat enough to use the full acreage with enough slope to see the ridgeline



behind us,” Steve says. “In my mind, it was the best of both worlds.”

Although the region’s diverse offerings vie for the couple’s attention on a daily basis, when it came to choosing a construction medium for their home, there was no competition. Logs were the perfect fit for their woody escape.

“We’ve always loved log homes, so there was no other option for us,” says Karen. After admiring a number of log homes in the surrounding area, they were led to local builder, Bryson Homes, owned by Jason Hughes. That connection then led them to choose a Timberhaven Log & Timber Homes’ log package, com-

prised of 6-by-12-inch eastern white pine engineered logs with a Dutch-lap profile and dovetail corners.

To get the ball rolling in short order, the Hendries used Timberhaven’s Keystone plan as their springboard, adding a number of custom features to make it their own. Having spent the past few years frequenting cabins



left Cozying up on the living room sofa is one of Karen's favorite respites during the winter months. "You have the warmth of the fireplace and views of the snowfall," she says. The towering wall of windows checks the box next to "a connection to nature" on the couple's dream-home wish list.



above As the primary decorator, Karen originally hoped for concrete countertops but quickly discovered their high-maintenance nature. "The next closest thing was the honed quartz," she says. She paired it with cabinetry stained a gray-blue tone and added a pair of industrial-style lights to complete the contemporary space.

in the area, Steve and Karen had developed a detailed list of things they loved with "a connection to nature" at the top. For Steve, this included designing a wall of windows along the main gathering area. "He wanted to bring that outdoor-living inside, and throughout the first floor, you are surrounded by the beautiful setting,"

explains Timberhaven's corporate sales manager Brad Mercer. "All you see are trees and nature."

For Karen, achieving that connection to nature translated to easy access to the outdoors. "My must-have was a wrap-around porch and deck. I wanted to be able to see the views from all different areas in all the sea-

sons and get as much indoor-outdoor access as possible," Karen says.

This upgrade to the exterior created one of the most stand-out aspects of the cabin. "This house is unique in that it has more outdoor living space than it does interior square footage on those first and second floors," shares Brad. To be exact, the home

includes 1,985 square feet across the three-bedroom, two-bath interior. The outdoor living area, including the covered porch, an open-air deck and a screened-in porch, rings in at 2,072 square feet and is frequented as much for cooking as for relaxing. “Closing my computer and firing up the grill or the smoker changes my mindset very quickly,” Steve shares with a laugh.

The couple credits Bryson Homes for the siting of the house, which they say has had a major impact on their enjoyment of it inside and out.

“Jason explained that building in the woods is not like building in a typical neighborhood where you have a traditional front and back of the house,” shares Karen. “You can put the house anywhere and at any angle to maximize the views.” Steve adds: “We were able to get creative and think outside the box on things.”

One such area is their second-floor primary suite. Wanting separation from the main gathering spaces and a pair of guest bedrooms on the first floor, the entire second story serves as a getaway within the getaway for the couple. Along with a loft with a desk where Steve occasionally works from home, the area features only a half wall along the bedroom, opening up the space to the views below. “We wanted the bedroom on the second floor for the sake of privacy, but the builder suggested leaving just the half wall so we could see out of the wall of windows from the bed, which has been a feature we love,” says Karen.



Whether they're cozied up in their primary suite, grilling out on the back deck or exploring the property, the couple say their log home is a true escape. “We made a little logo, and we call the house ‘Hendrie Hideaway,’” says Karen. “It’s the first thing you see when you pull into our driveway, and that’s truly what it is for us.”

above **The Dutch door leading to the screened-in porch is a prime example of Karen’s determination to fill the home with custom features, and she advises other new log homeowners to do the same. “Don’t give up on those little touches that will make your house your home,” she says.**

The light-filled dining room has a decidedly natural feel, with its rustic table and deer-hide upholstered chairs. "Textures are important to me. Everything needs to feel warm, whether that means adding a leather couch, tweed chair or velvet curtains," says Karen. "You won't find anything shiny in this house."



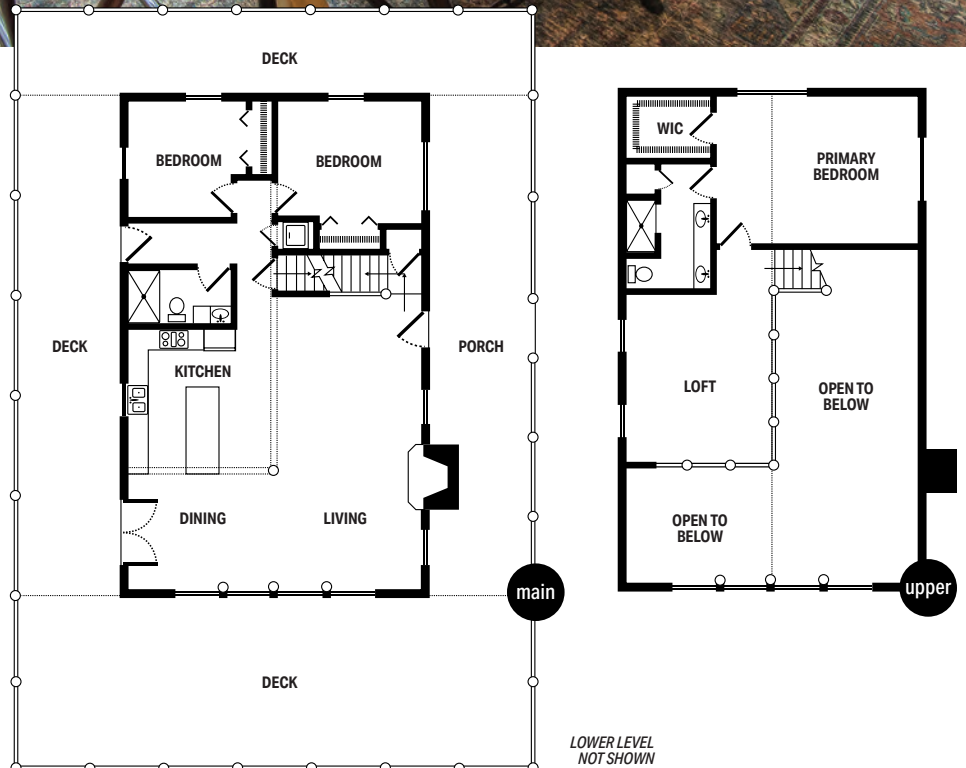
HOME DETAILS

SQUARE FOOTAGE
1,985

BEDROOMS 3
BATHS 2

LOG PROVIDER/DESIGNER
TIMBERHAVEN
LOG & TIMBER HOMES
timberhavenloghomes.com

BUILDER
BRYSON HOMES
brysonhomes.net



STEVE AND KAREN'S
special
spaces

1



4



1 Soft sage green paint infuses the primary bedroom with instant calm and serves as a natural companion to the clear-stained logs. **2** By using the same finishes seen in the kitchen in both bathrooms, the home has a cohesive feel as you move from one space to the next. **3** The mantel above the fireplace was sourced from an Amish market. "I found this chestnut piece of wood that was over 100 years old and had it cut to size, and I love it every time I look at it," Karen says. **4** The screened-in porch allows this outdoorsy couple to continue to enjoy the breath of fresh air their log retreat affords — even through the buggy summer months. In all, this home boasts more deck and porch space than indoor square footage. **5** Steve and Karen chose black exterior elements — like the metal roof, Andersen windows and door trim, the soffit and the spindles — to subtly play off the warmth of the logs while making a modern style statement. To bolster the contemporary feel, the couple had the decking boards installed on a bias and opted for pressure-treated lumber rather than composite.