



THE STRIKING EXTERIOR OF LOST BEAR CABIN COMBINES WOOD AND CULTURED STONE WITH PILLARS THE SACCHINIS ADDED TO AN EXISTING TIMBERHAVEN LOG & TIMBER HOMES PLAN. OPPOSITE: A HANDSOME FAUX ANTLER CHANDELIER ACCENTS A SPACIOUS GREAT ROOM WITH AMPLE SEATING, STONE FIREPLACE, AND WINDOWS THAT OFFER NATURAL LIGHT AND PANORAMIC VIEWS OF THE SURROUNDING PENNSYLVANIA COUNTRYSIDE.

# A Perfect STORM

BY MIKE HASKEW  
PHOTOGRAPHY BY ALLEN MOWERY  
STYLING BY BOBBI LANDIS



A mountaintop cabin in Pennsylvania offers a superb setting for a getaway with abundant outdoor activities.

AN HOUR OUTSIDE PITTSBURGH, IN THE LAUREL HIGHLAND MOUNTAINS OF WESTERN Pennsylvania, Keith and Patty Sacchini found the ideal location for a quiet weekend getaway, a vacation with family and friends, and opportunities to pursue the leisure activities they love—the Lost Bear Cabin.

At 5,500 square feet, their two-story log home includes six bedrooms, 4½ baths, a great room with majestic stone fireplace, a tiled entry area to accommodate ski boot and winter clothing removal, a secondary entertainment area on the lower level with full walkout basement, and plenty of porch space. The 20-acre homesite graces a mountaintop with rich views of Mount Davis, the state's highest elevation, while three acres have been landscaped and maintained as yard and walking trails wind throughout.

“The property was close enough to allow for day trips,” the Sacchinis explain. “It feels like we’re in the country but still very close to the city, and we have four-season outdoor recreation available, including hiking, fishing, kayaking, hunting, rafting, and golfing. We also have three area ski resorts. The property was raw land previously and had not been exchanged for over 75 years. It was completely wooded and lacked any utilities. A one-room homestead foundation was all that was on the property.”

When time came to build their home, the Sacchinis chose Timberhaven Log & Timber Homes as their partner in the project, which was completed in 2016. They began with an existing plan and made adjustments to fit their needs and desires. They added such personal touches as a cathedral-ceilinged covered porch and decking with dimmable lights, fans, and a superb sound system. The front porch roof is supported by pillars of cultured stone and log posts; the cultured stone continues on the entry bumpout and second story above.

“The property was purchased in 2001. We had a mobile home on the site, which allowed for regular visits and overnight stays,” they comment. “Low interest rates combined with the availability of Timberhaven and a

### *Our favorite room is ...*

“The great room because of the tremendous amount of natural light and great views of the rolling hills the two-story windows bring in. A close second is the covered porch because it allows us to enjoy the light winds and views of the Laurel Highland Mountains and gives us immediate access to the kitchen.”

—Keith and Patty Sacchini



### *Design Tip*

“Don’t be in a hurry. Look closely at your allowances and think about higher end construction first, completing additional projects in the future instead of going with a cheaper solution in the initial build.”

builder that had previously constructed log homes for both friends and family in the area. All that created the perfect storm! It was time to build.”

Lynda Tompkins, principal of Timberhaven, took cues from her clients and helped bring their vision to reality. “The Sacchinis were great to work with,” she notes. “They came to Timberhaven with a plan design in mind that we were able to work together to ‘fine tune,’ so to speak, in relation to the intended use of the home and their desired budget parameters. Keith and Patty were deliberately careful in the planning and decision process and receptive to input, ideas, and suggestions as we worked through the process. This engaged and open communication was the key to achieving the desired outcome.”

The Sacchinis add, “There was a consistent flow of information with Tim-

**ABOVE:** THE FIRST-FLOOR MASTER BEDROOM FEATURES DOUBLE FRENCH DOORS THAT LEAD TO A PRIVATE SHED PORCH, PERFECT FOR MORNING COFFEE.

**OPPOSITE TOP:** CABINETRY THROUGHOUT THE LOST BEAR CABIN WAS CUSTOM BUILT BY A LOCAL CARPENTER, INCLUDING THE BATHROOM VANITIES. IN THE MASTER BATH, A MIRROR THAT EXTENDS THE FULL LENGTH OF THE VANITY ADDS DEPTH TO THE SPACE.

**OPPOSITE BOTTOM:** THIS LOST BEAR BEDROOM FEATURES A SPACIOUS OFFSET THAT ACCOMMODATES A DAYBED AND ADJACENT TABLE. THE SLIDING BARNWOOD DOORS WERE CONSTRUCTED BY BUILDER J.C. COMER.

berhaven regarding progress and our selections and deliveries from local suppliers of items such as lighting, flooring, and appliances. From start to finish, Timberhaven engineering was always available. Local builder J.C. Comer was outstanding. Difficulties rest with having so many options to consider when selecting finishing items.”

The home exterior was completed with Timberhaven Eastern White Pine engineered logs and cultured stone. Hardwood floors of engineered walnut shimmer throughout the home. A natural flagstone hearth and cultured stone

**BELOW:** THE KITCHEN INCLUDES A COPPER FARM SINK, GRANITE COUNTERTOPS, AND AN INDUCTION COOKTOP PLACED IN THE ISLAND WITH DUCTWORK THAT CHANNELS AIR THROUGH THE BASEMENT AND OUTSIDE, ELIMINATING THE NEED FOR AN OVERHEAD FAN SYSTEM.

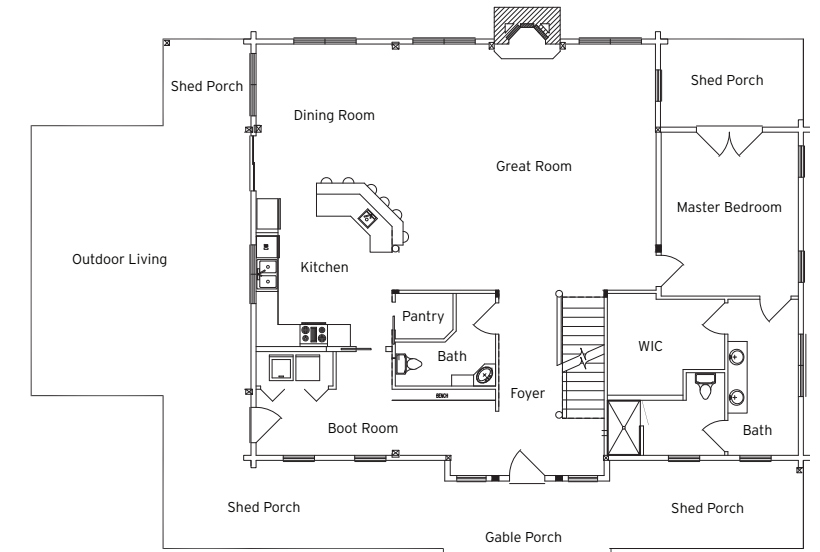
face the wood-burning fireplace in the great room, which matches the exterior fireplace. Luxury vinyl tile flooring on the lower level has the appearance of wide wood planking. All baths were finished in wall-to-wall barnwood-style tile to match existing wood beams. Interior walls were finished in white pine, and pine was used for railings and stairways.

All cabinets, bathroom vanities, and the kitchen island were custom made by a local carpenter who also crafted built-in bunk beds. Travertine tile completes a rustic look for the entrance and kitchen areas.

“It’s a balance between a rustic mountain home and com-

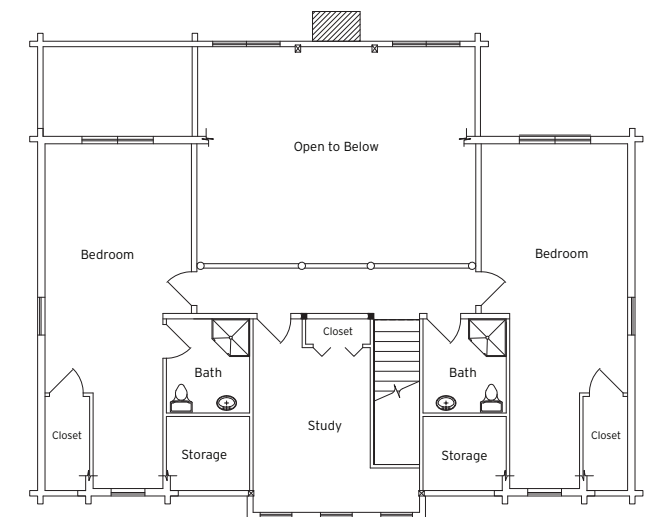
fortable and contemporary furnishings, kind of husband versus wife,” laugh Keith and Patty, both business owners and married 28 years with four adult children. “Our friends and families have a unique place to gather, to spend time outdoors, and have quality time together. We enjoy sharing the unique property with vacation rental guests, making every effort to create memories for their friends and families with time spent at the Lost Bear Cabin.”

For Keith and Patty Sacchini, the Lost Bear lifestyle provides unsurpassed opportunities for outdoor activities or to simply sit and contemplate the beauty of the world around them. ❄️



**MAIN LEVEL**

**OUTDOOR LIVING SPACE AND PLENTY OF PORCHES SURROUND THE FIRST FLOOR OF THE SACCHINI HOME IN THE MOUNTAINS OF WESTERN PENNSYLVANIA.**



**UPPER LEVEL**

**A PAIR OF GUEST BEDROOMS, STUDY, AND OPEN AREA TO THE MAIN FLOOR BELOW OFFER PRIME SPACE UTILIZATION ON THE SECOND LEVEL OF THE HOME.**

**Log Home Producer: Timberhaven Log & Timber Homes, Middleburg, Pennsylvania  
 Builder: J.C. Comer, DC Quality Construction, Smithton, Pennsylvania**

**Three-Story Home ❄️ Square footage: 5,500  
 Bedrooms: 6 Baths: 4.5**