

# STANDARD WILLIAMSBURG

## FLOOR PLANS AND ELEVATIONS FOR 1998

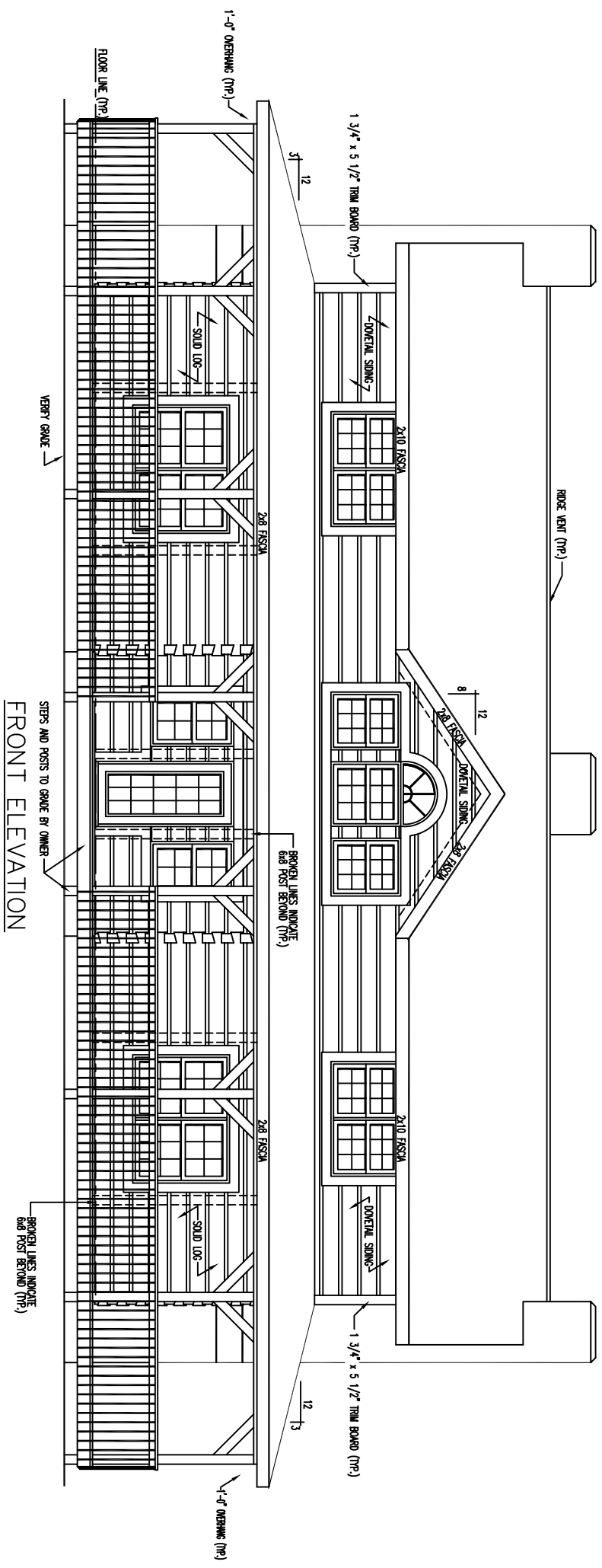


LOG PROFILE

### \*\* \* GENERAL NOTES \* \*

- 6 X 12 SINGLE TONGUE WHITE PINE UNCHINKED DOVETAIL LOGS
- 11 LOG COURSES TO SQUARE - AT CATHEDRAL AREA.
- 17 DOVETAIL SIDING COURSES TO SQUARE - AT WING AREAS -  
 ( COURSES 1 THRU 11 ARE SOLID LOG )
- 17 1 / 2 DOVETAIL SIDING COURSES TO SQUARE - AT DORMER AREA.
- ALL INTERIOR STUD WALLS TO BE 24" O.C. UNLESS NOTED.
- 2nd FLOOR JOISTS LOCATED IN 9th LOG COURSE.
- ALL PARTITION WALLS RUNNING TO THE TOP OF THE 9th LOG COURSE WILL REQUIRE A DOUBLE TOP AND BOTTOM PLATE.
- STEPS AND POSTS TO GRADE BY OWNER / OTHERS.
- 1 3 / 4" X 5 1 / 2" EXTERIOR TRIM MATERIAL SHOWN AT ALL DOORS AND WINDOWS UNLESS NOTED.
- ALL OVERHANGS APPROX. 2'-0" UNLESS NOTED.
- ROOF SYSTEM DESIGNED FOR 40 lb. SNOW LOAD.
- WINDOW GRILLE PATTERNS SHOWN ARE FOR ILLUSTRATION ONLY, ACTUAL PATTERNS MAY VARY.
- VERIFY GRADE ON SITE.
- NO LOG SIDING TO BE PROVIDED BELOW PORCH AREA.

1726 SQ. FT. FIRST FLOOR	1,024 SQ. FT. PORCH
1205 SQ. FT. SECOND FLOOR	



**FRONT ELEVATION**

STEPS AND POSTS TO GRADE BY OWNER

BROKEN LINES INDICATE  
BAR POST BEHIND (TYP.)

BROKEN LINES INDICATE  
BAR POST BEHIND (TYP.)

1-0\"/>

1 3/4\"/>

12  
13

DOMETAL SIMING

2-10 FASCIA

SOLID LOG

2-8 FASCIA

VEERY GRADE

FLOOR LINE (TYP.)

1-0\"/>

3  
12

1 3/4\"/>

DOMETAL SIMING

2-10 FASCIA

ROOF VEET (TYP.)

8  
12

DOMETAL SIMING

2-8 FASCIA

2-8 FASCIA

2-10 FASCIA

DOMETAL SIMING

2-10 FASCIA

2-8 FASCIA

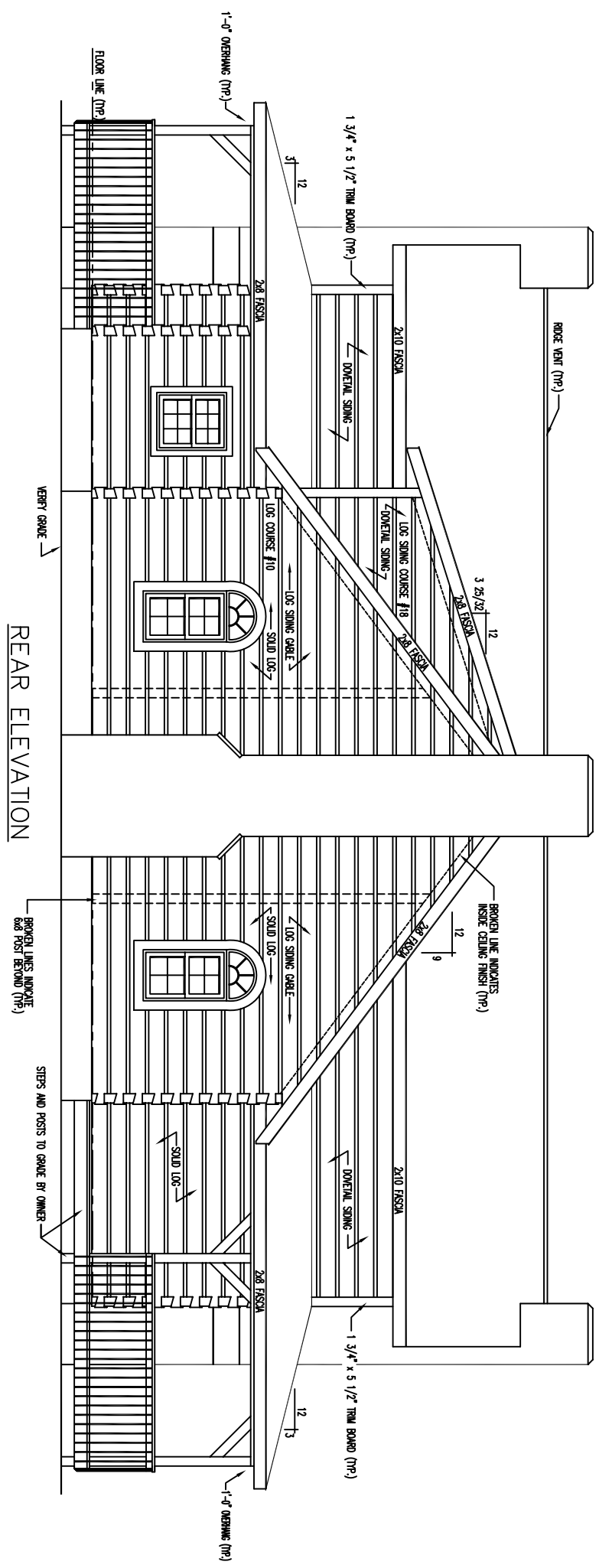
2-8 FASCIA

2-8 FASCIA

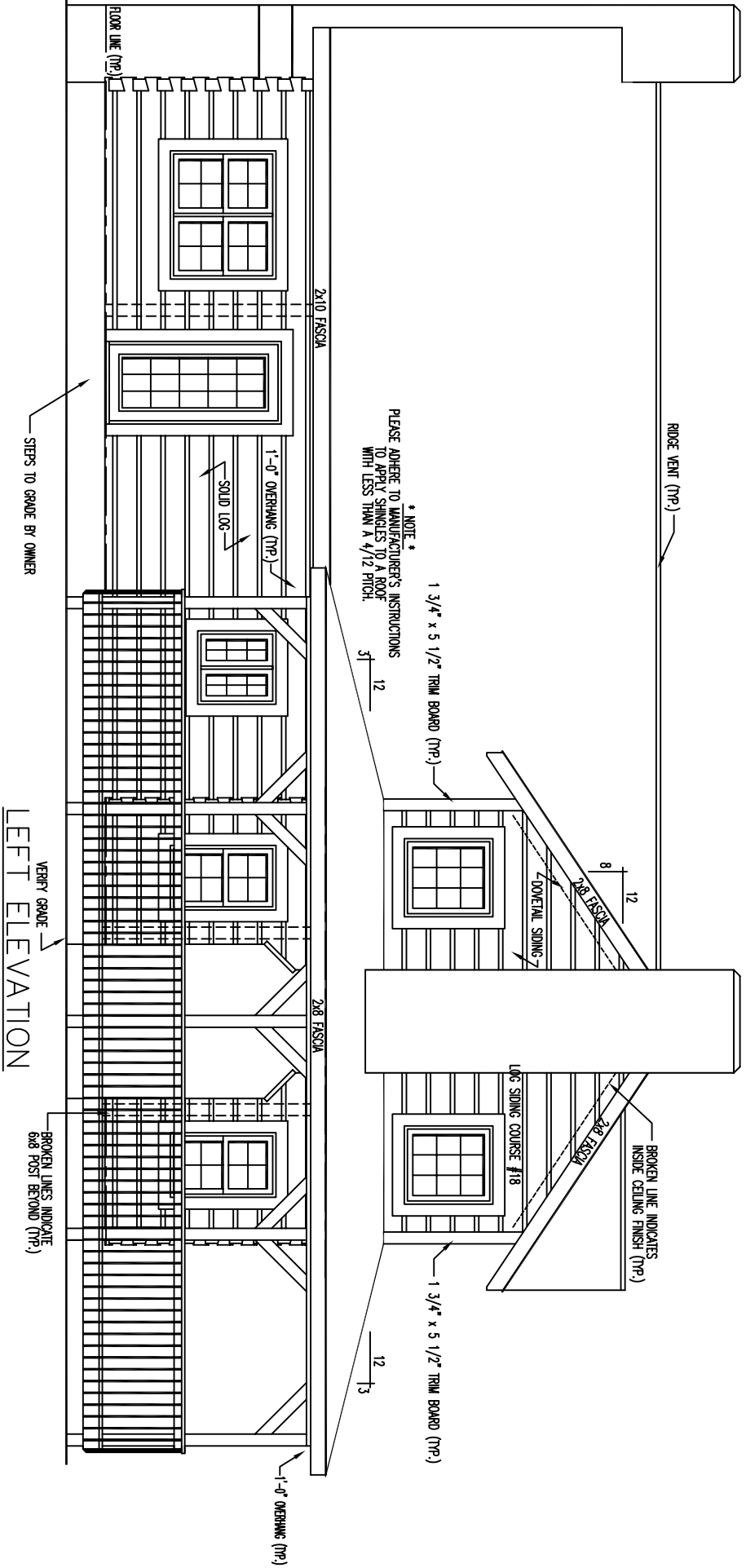
2-8 FASCIA

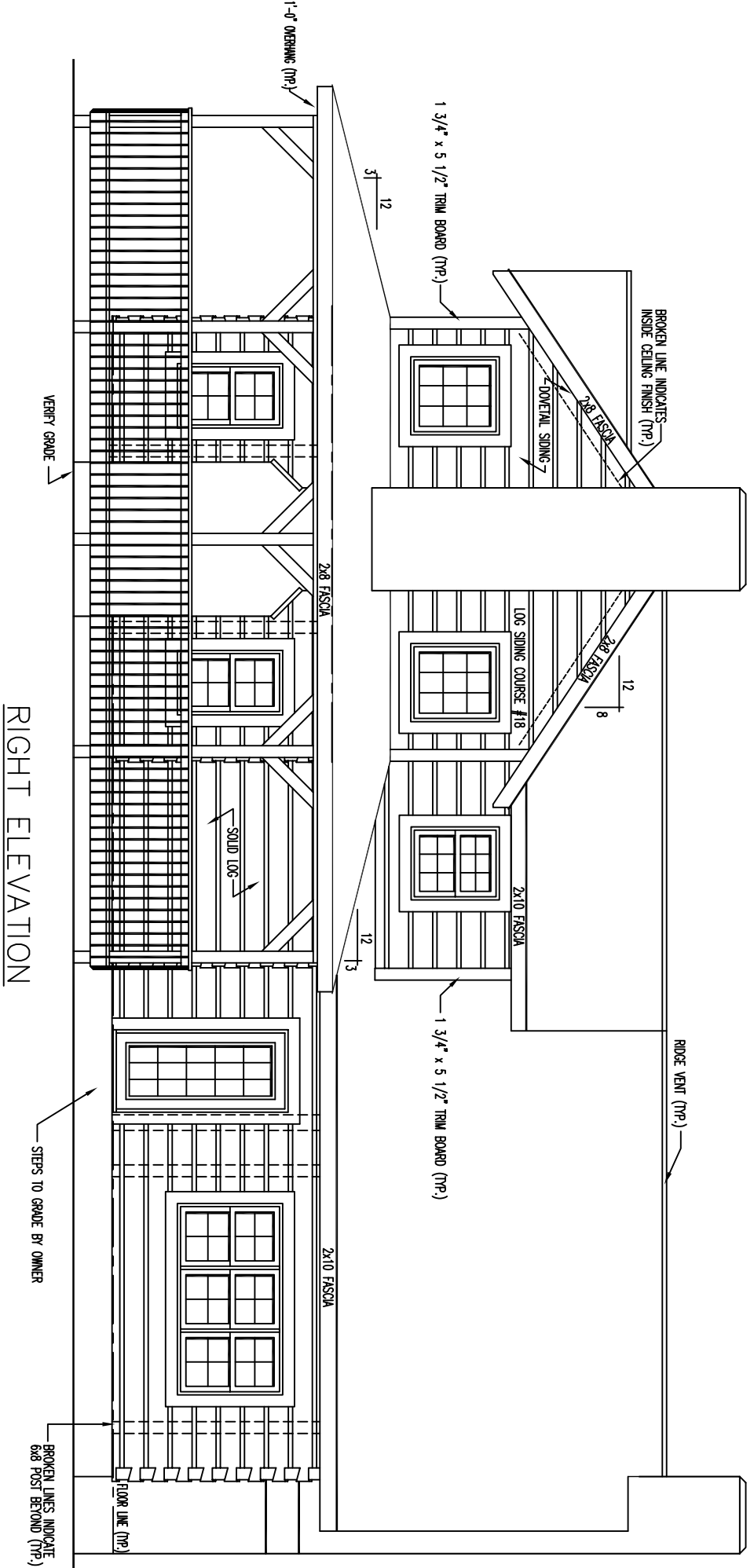
2-8 FASCIA

2-8 FASCIA



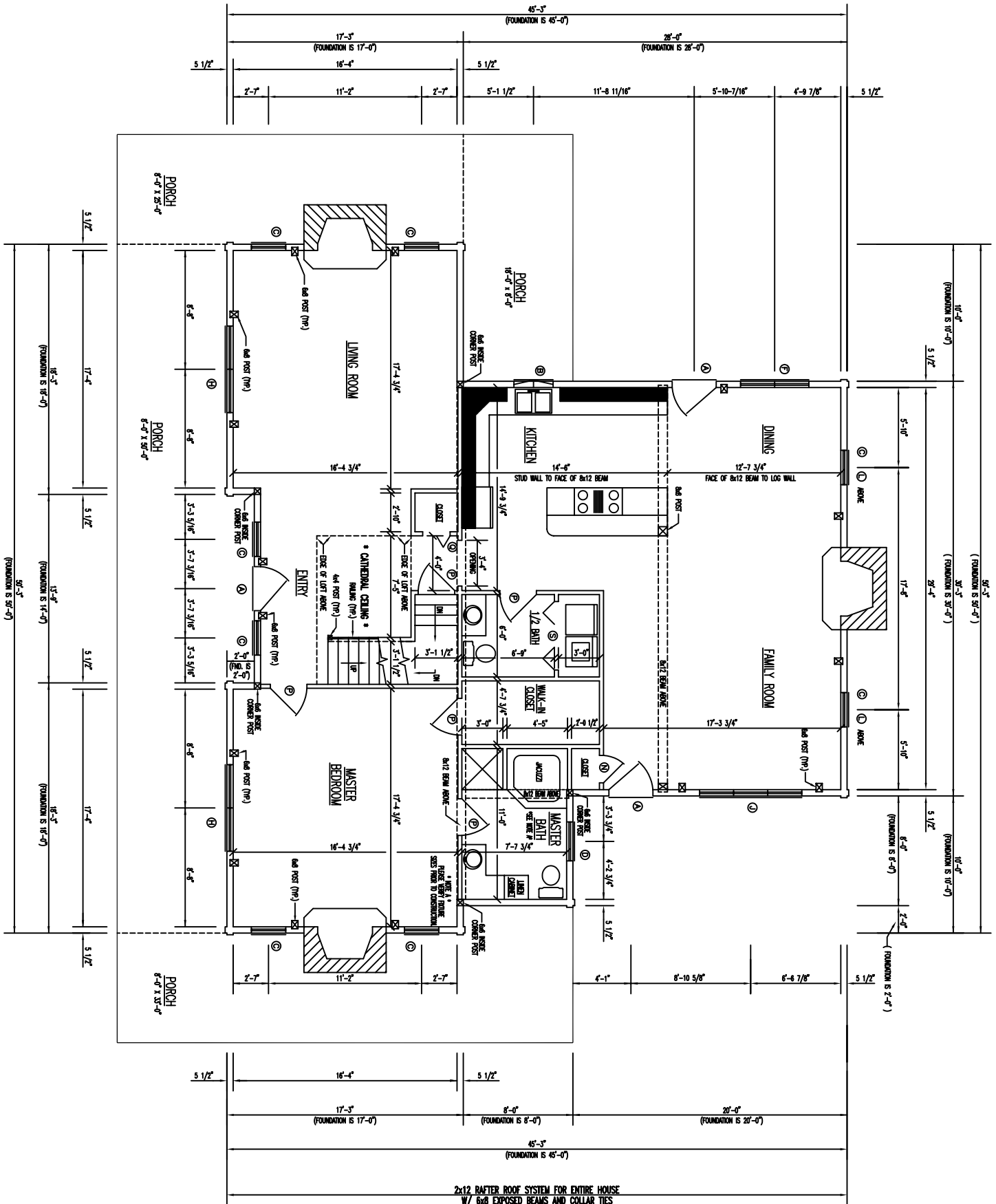
REAR ELEVATION



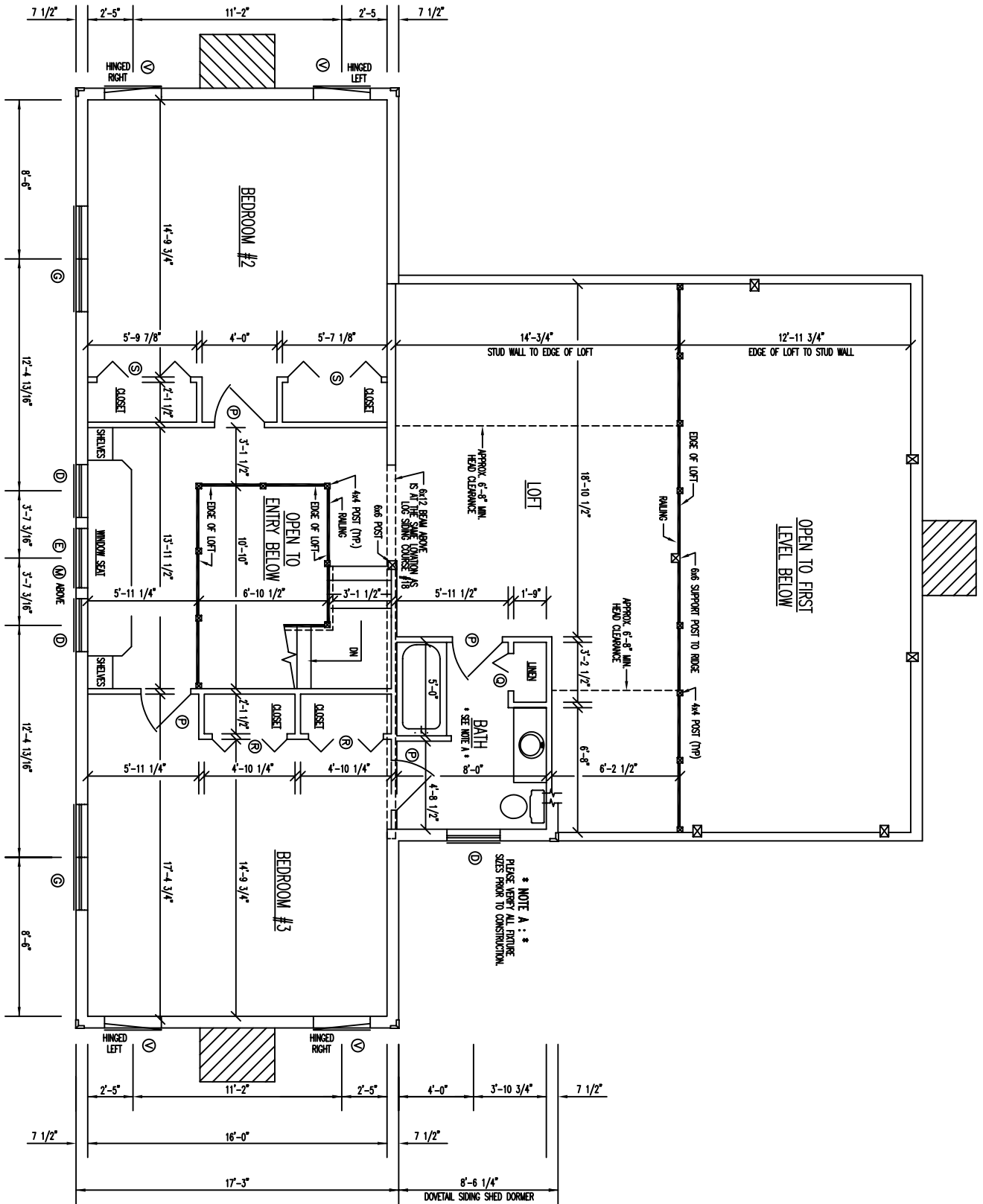


# FLOOR PLAN 1st LEVEL

FLOOR AREA = 1,728 SQ. FT.



2x12 RAFTER ROOF SYSTEM FOR ENTIRE HOUSE  
W/ 6x6 EXPOSED BEAMS AND COLLAR TIES



FLOOR PLAN 2ND LEVEL

FLOOR AREA = 1,205 SQ. FT.

\* NOTE A : \*  
PLEASE VERIFY ALL FINISH  
SIZES PRIOR TO CONSTRUCTION.