

RIDGE VENT (TYP)

DASHED LINE INDICATES
INSIDE CEILING FINISH (TYP)

DASHED LINE INDICATES
INSIDE CEILING LOCATION (TYP)

1'-6" OVERHANG

1'-6" OVERHANG

2x10 FASCIA

2x10 FASCIA

LOG SIDING COURSE #27

LOG SIDING COURSE #27

1 3/4" X 5 1/2" CORNER TRIM

1 3/4" X 5 1/2" CORNER TRIM

2x8 FASCIA

SOLID LOG

SOLID LOG

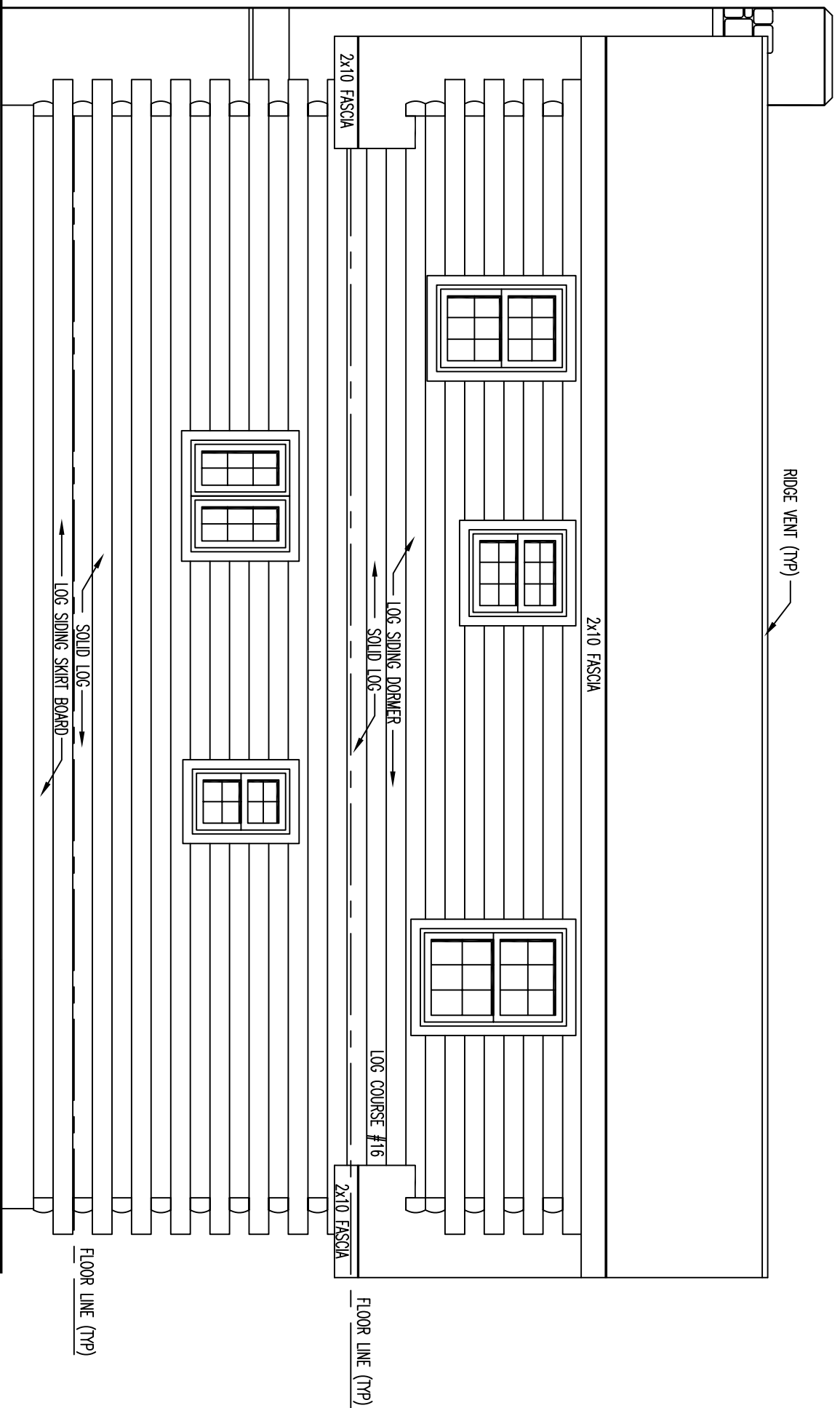
FLOOR LINE (TYP)

VERIFY GRADE

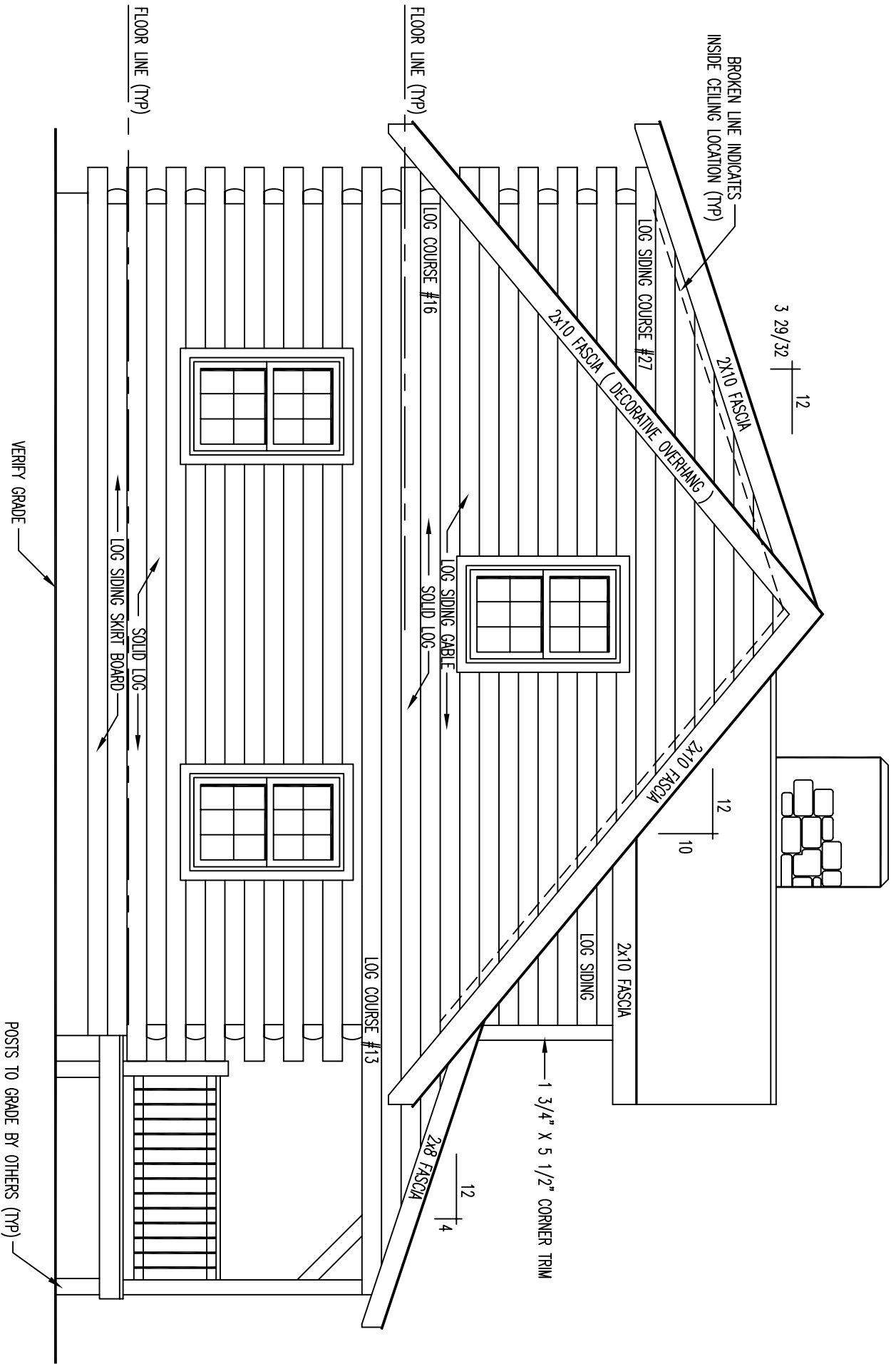
STEPS AND POSTS TO
GRADE BY OTHERS

DASHED LINES INDICATE
6x6 POST BEYOND

FRONT ELEVATION



REAR ELEVATION



BROKEN LINE INDICATES
INSIDE CEILING LOCATION (TYP)

3 29/32 | 12

12 | 10

1 3/4" X 5 1/2" CORNER TRIM

12 | 4

LEFT ELEVATION

VERIFY GRADE

POSTS TO GRADE BY OTHERS (TYP)

FLOOR LINE (TYP)

FLOOR LINE (TYP)

LOG COURSE #13

LOG COURSE #16

LOG SIDING COURSE #27

LOG SIDING

2x10 FASCIA

2x10 FASCIA (DECORATIVE OVERHANG)

2x10 FASCIA

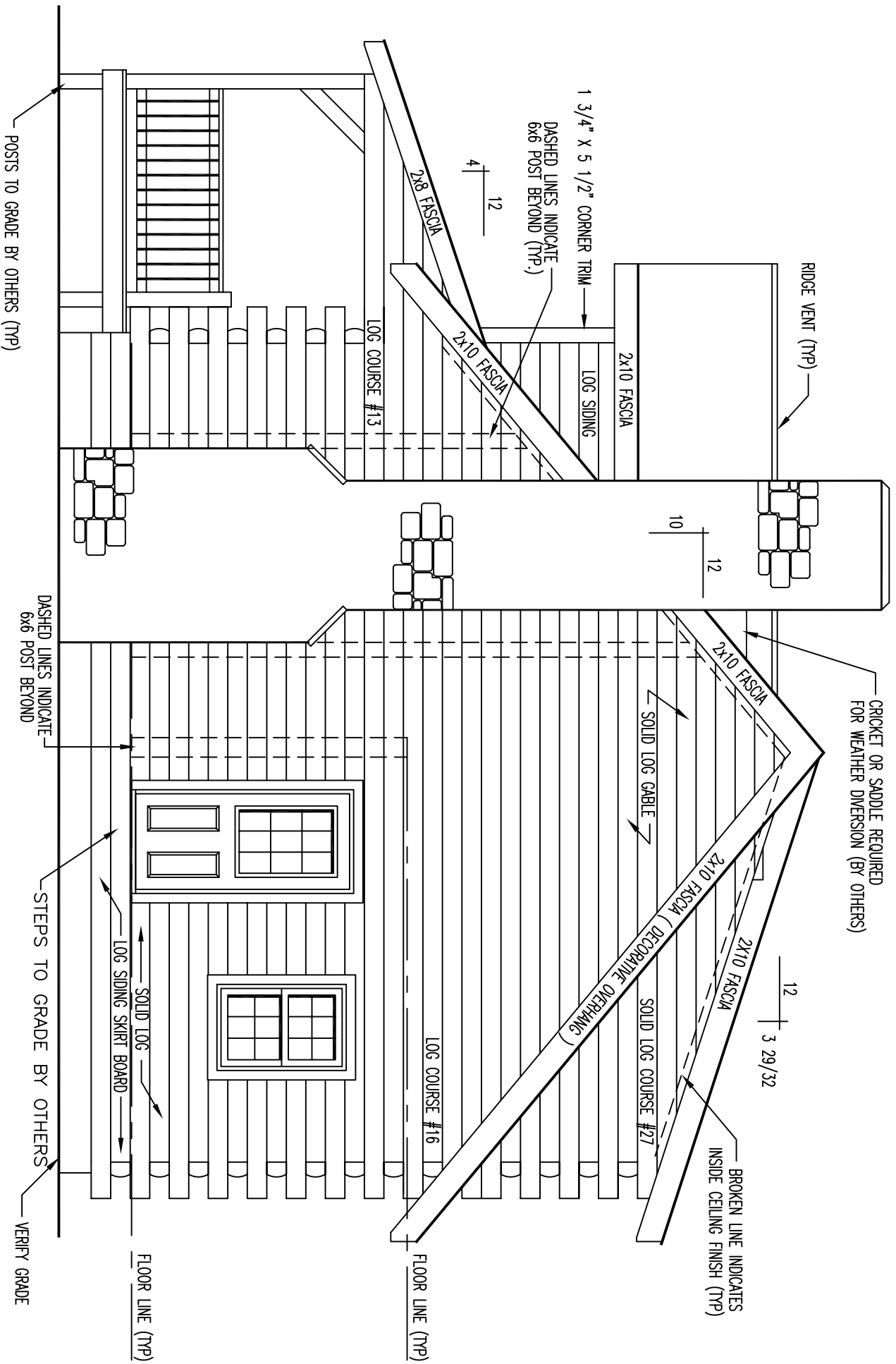
LOG SIDING GABLE

SOLID LOG

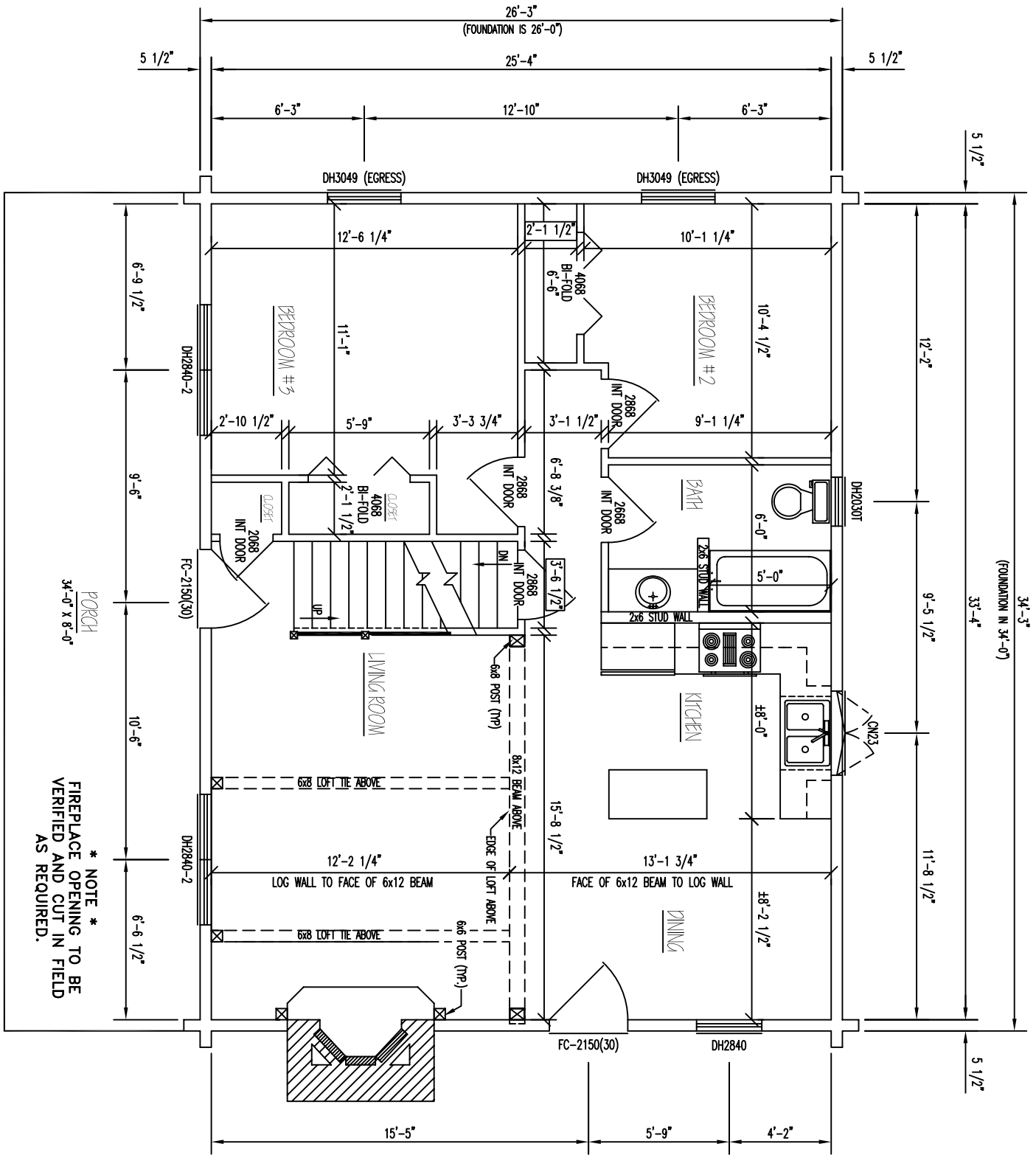
SOLID LOG

LOG SIDING SKIRT BOARD

FLOOR LINE (TYP)



RIGHT ELEVATION

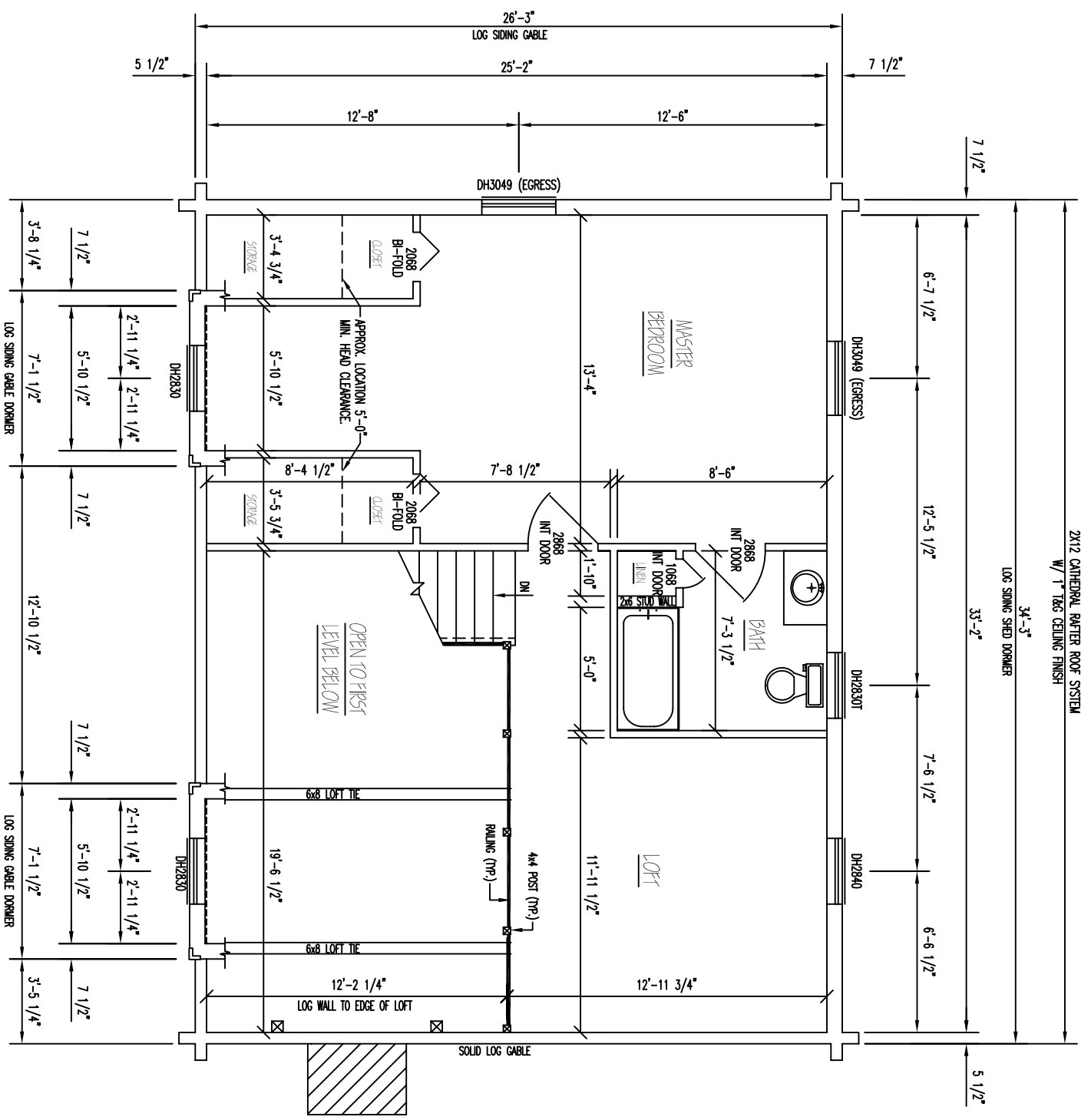


1st LEVEL FLOOR PLAN

FLOOR AREA = 884 SQ. FT.
 PORCH AREA = 272 SQ. FT.

* NOTE *
 FIREPLACE OPENING TO BE
 VERIFIED AND CUT IN FIELD
 AS REQUIRED.

2X12 CATHEDRAL RAFTER ROOF SYSTEM
W/ 1" TAG GELING FINISH



2nd LEVEL FLOOR PLAN

FLOOR AREA = 673 SQ. FT.