

FRONT ELEVATION

CRICKET OR SADDLE REQUIRED FOR WEATHER DIVERSION

10 12

2x10 FASCIA

2x10 FASCIA (DECORATIVE OVERHANG)

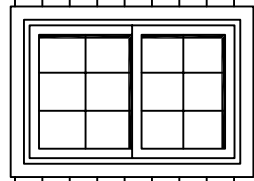
12 4 1/32 ±

2x10 FASCIA

DASHED LINE INDICATES INSIDE CEILING FINISH

LOG SIDING COURSE #27

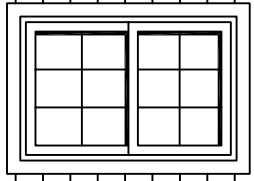
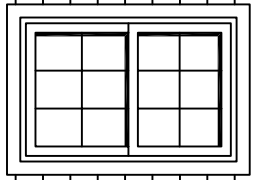
LOG SIDING



LOG SIDING GABLE
SOLID LOG

LOG COURSE #17

LOG COURSE #14



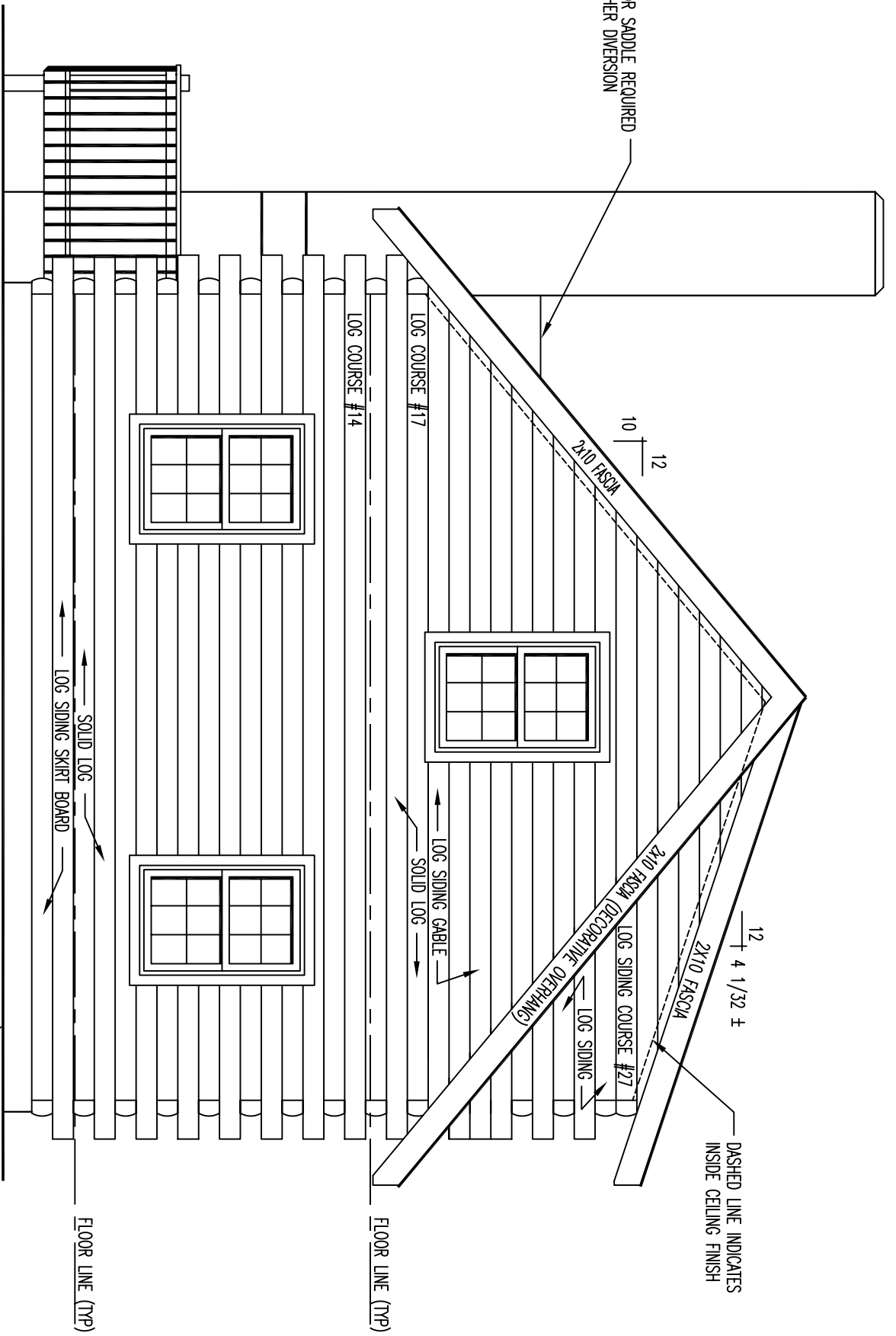
SOLID LOG
LOG SIDING SKIRT BOARD

FLOOR LINE (TYP)

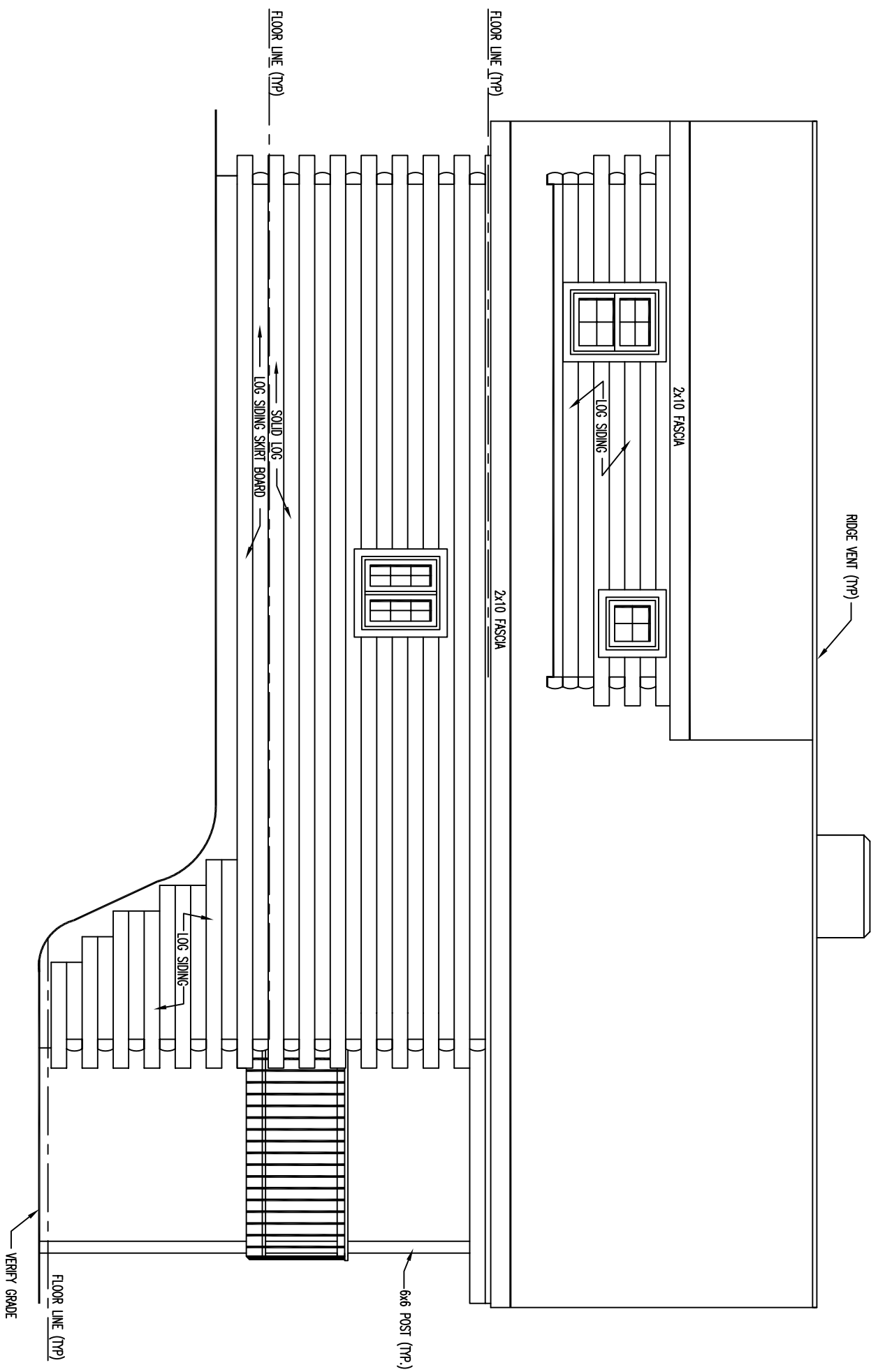
FLOOR LINE (TYP)

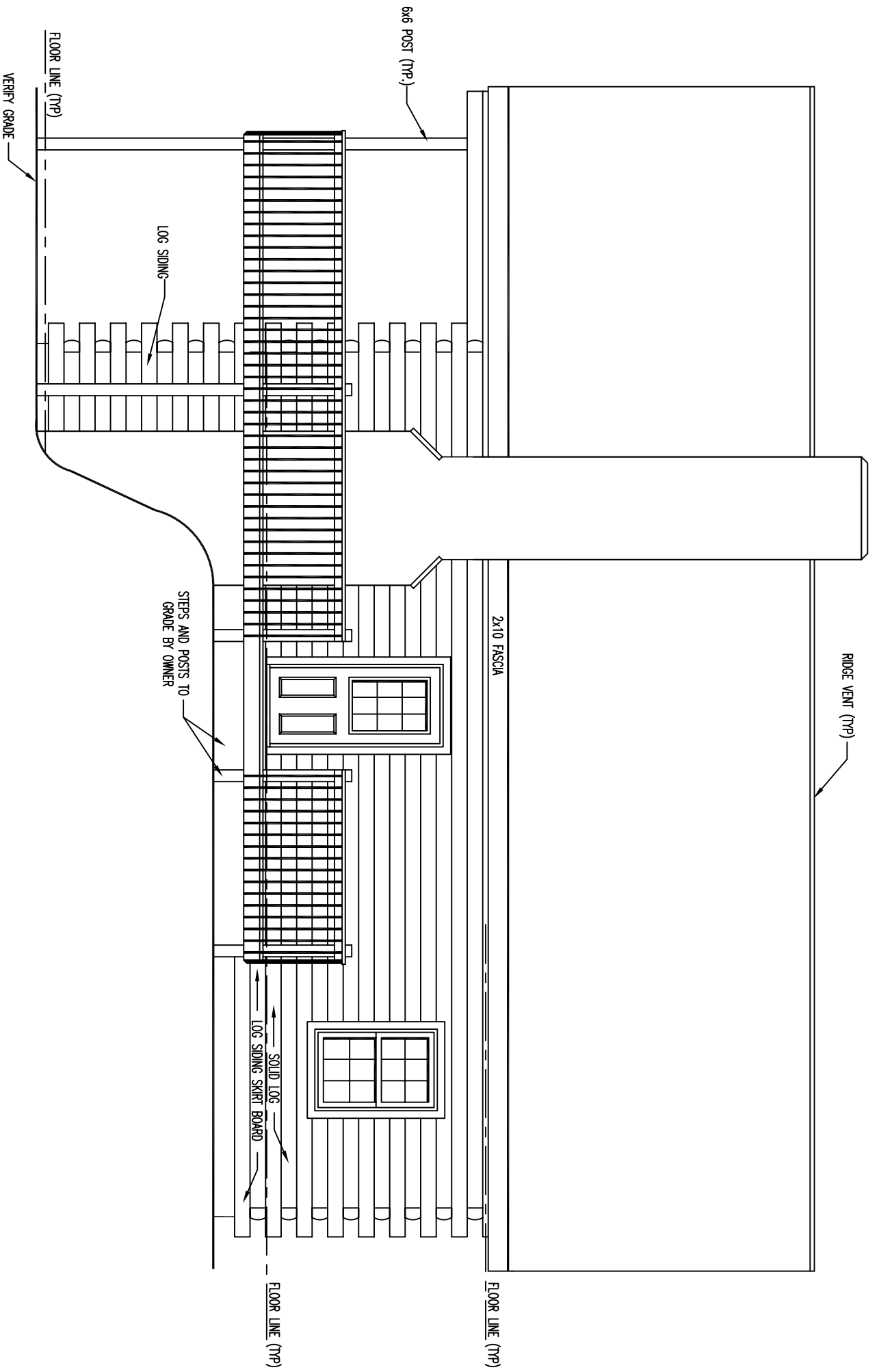
VERIFY GRADE

REAR ELEVATION

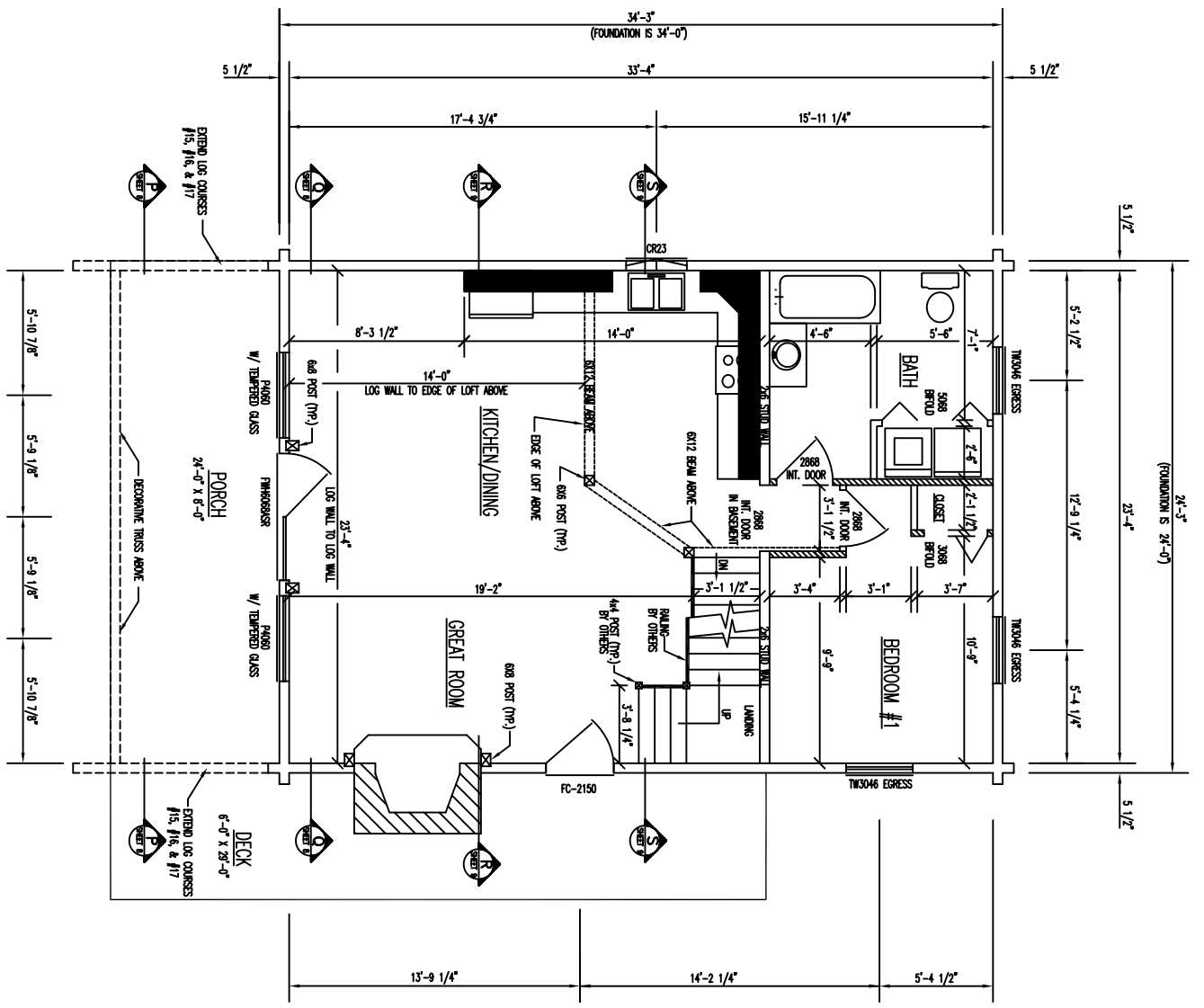


LEFT ELEVATION





RIGHT ELEVATION



FLOOR PLAN 1st LEVEL

FLOOR AREA = 816 SQ. FT.

▨ - INDICATES BEARING WALLS

24'-3" (FOUNDATION IS 24'-0")

5 1/2"

5 1/2"

5 1/2"

5'-2 1/2"

5'-4 1/4"

5 1/2"

5'-4 1/2"

14'-2 1/4"

13'-8 1/4"

5'-10 7/8"

5'-9 1/8"

5'-9 1/8"

5'-10 7/8"

5'-10 7/8"

5'-10 7/8"

5'-10 7/8"

5'-10 7/8"

5'-10 7/8"

5'-10 7/8"

5'-10 7/8"

5'-10 7/8"

5'-10 7/8"

5'-10 7/8"

5'-10 7/8"

5'-10 7/8"

5'-10 7/8"

5'-10 7/8"

5'-10 7/8"

5'-10 7/8"

5'-10 7/8"

5'-10 7/8"

5'-10 7/8"

5'-10 7/8"

5'-10 7/8"

5'-10 7/8"

5'-10 7/8"

5'-10 7/8"

5'-10 7/8"

5'-10 7/8"

5'-10 7/8"

5'-10 7/8"

5'-10 7/8"

5'-10 7/8"

5'-10 7/8"

5'-10 7/8"

5'-10 7/8"

5'-10 7/8"

5'-10 7/8"

5'-10 7/8"

5'-10 7/8"

5'-10 7/8"

5'-10 7/8"

5'-10 7/8"

5'-10 7/8"

5'-10 7/8"

5'-10 7/8"

5'-10 7/8"

5'-10 7/8"

5'-10 7/8"

5'-10 7/8"

5'-10 7/8"

5'-10 7/8"

5'-10 7/8"

5'-10 7/8"

5'-10 7/8"

5'-10 7/8"

5'-10 7/8"

5'-10 7/8"

5'-10 7/8"

5'-10 7/8"

5'-10 7/8"

5'-10 7/8"

5'-10 7/8"

5'-10 7/8"

5'-10 7/8"

5'-10 7/8"

5'-10 7/8"

5'-10 7/8"

5'-10 7/8"

5'-10 7/8"

5'-10 7/8"

5'-10 7/8"

5'-10 7/8"

5'-10 7/8"

5'-10 7/8"

5'-10 7/8"

5'-10 7/8"

5'-10 7/8"

5'-10 7/8"

5'-10 7/8"

5'-10 7/8"

5'-10 7/8"

5'-10 7/8"

5'-10 7/8"

5'-10 7/8"

5'-10 7/8"

5'-10 7/8"

5'-10 7/8"

5'-10 7/8"

5'-10 7/8"

5'-10 7/8"

5'-10 7/8"

5'-10 7/8"

5'-10 7/8"

5'-10 7/8"

5'-10 7/8"

5'-10 7/8"

5'-10 7/8"

5'-10 7/8"

5'-10 7/8"

5'-10 7/8"

5'-10 7/8"

5'-10 7/8"

5'-10 7/8"

5'-10 7/8"

5'-10 7/8"

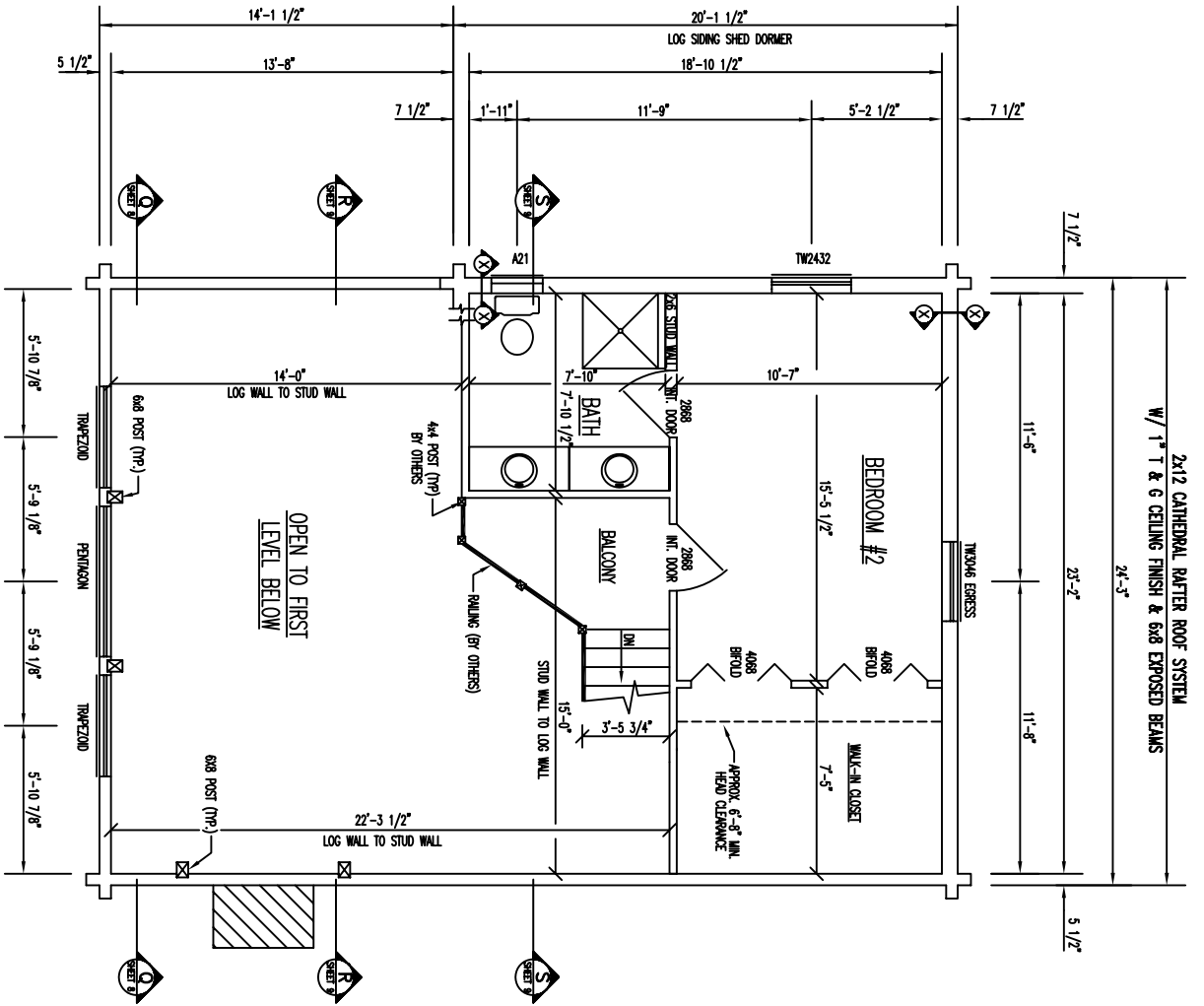
5'-10 7/8"

5'-10 7/8"

5'-10 7/8"

5'-10 7/8"

5'-10 7/8"



FLOOR PLAN 2nd LEVEL

FLOOR AREA = 382 SQ. FT.