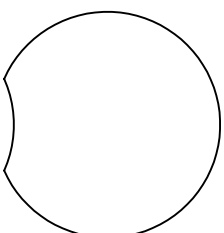


STANDARD VERNON

FLOOR PLANS AND ELEVATIONS FOR 1998



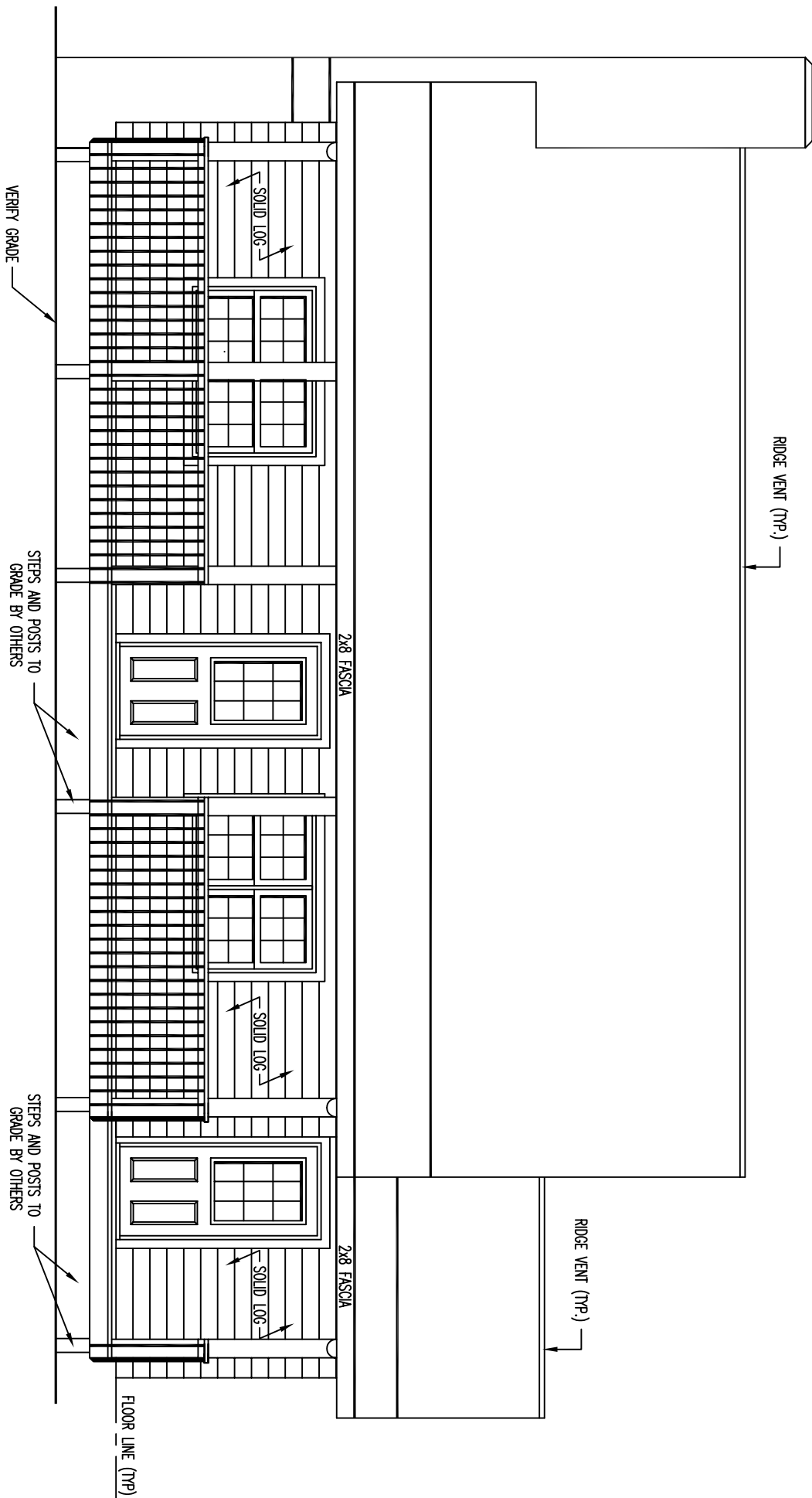
LOG PROFILE

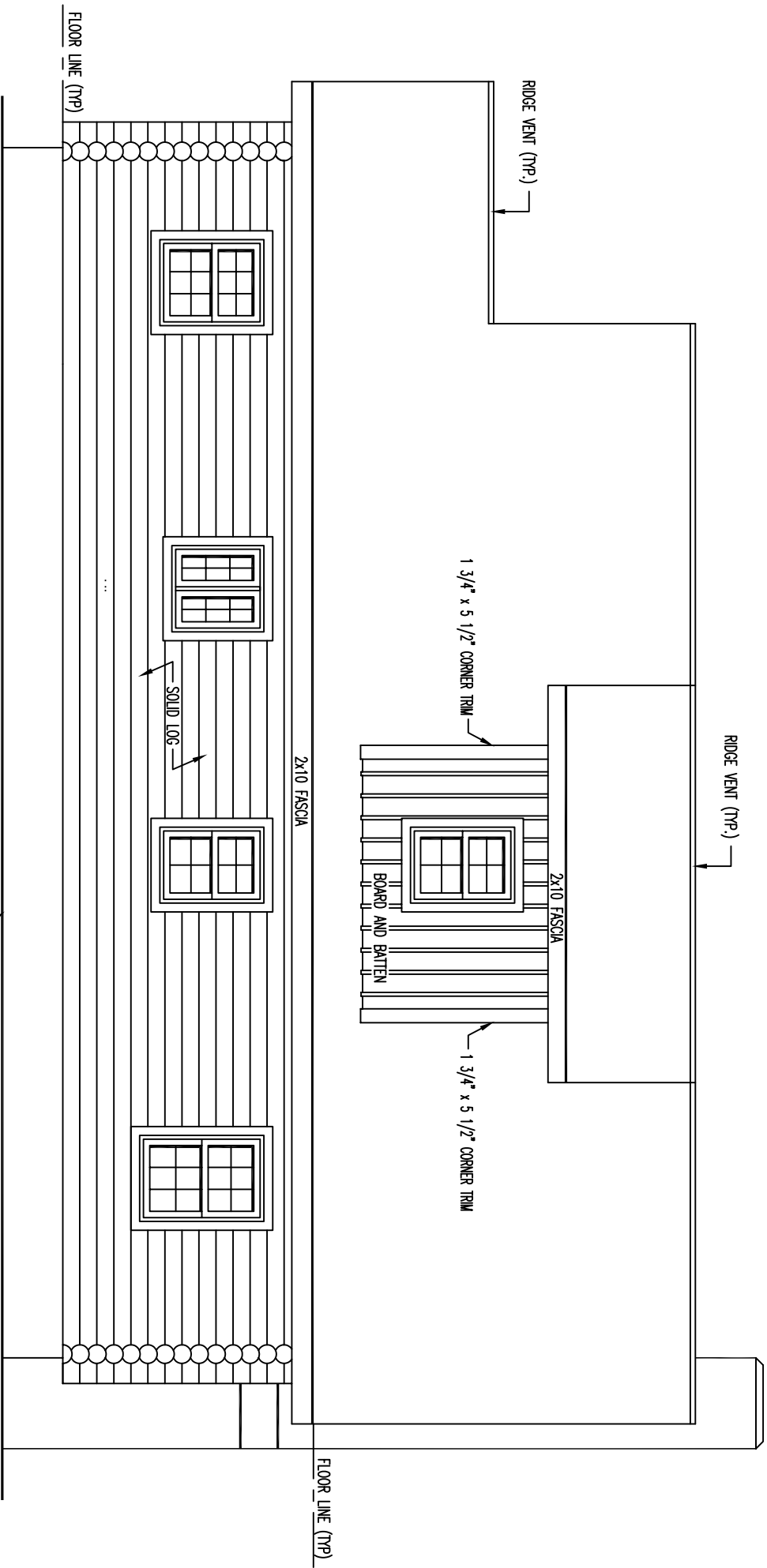
** GENERAL NOTES **

- 8" ROUND SWEDISH COPE WHITE PINE LOGS
- SEE LOG SCHEMATIC FOR COURSES TO SQUARE.
- BOARD AND BATTEN - AT GABLE AND DORMER AREAS.
- ALL INTERIOR STUD WALLS TO BE 24" O.C. UNLESS NOTED.
- ALL EXTERIOR STUD WALLS TO BE 24" O.C. UNLESS NOTED.
- 2nd FLOOR JOISTS LOCATED IN 15th LOG COURSE.
- ALL PARTITION WALLS RUNNING TO THE TOP OF THE 15th LOG COURSE WILL REQUIRE A DOUBLE TOP AND BOTTOM PLATE.
- STEPS AND POSTS TO GRADE BY OWNER / OTHERS.
- 1 3/4" X 3 1/2" EXTERIOR TRIM MATERIAL SHOWN AT ALL DOORS AND WINDOWS UNLESS NOTED.
- ALL OVERHANGS APPROX. 2'-0" UNLESS NOTED.
- ROOF SYSTEM DESIGNED FOR 40 LB. SNOW LOAD.
- WINDOW GRILLE PATTERNS SHOWN ARE FOR ILLUSTRATION ONLY, ACTUAL PATTERNS MAY VARY.
- VERIFY GRADE ON SITE.
- NO LOG SIDING TO BE PROVIDED BELOW PORCH AREA.

912 SQ. FT. FIRST FLOOR	224 SQ. FT. PORCH
470 SQ. FT. SECOND FLOOR	

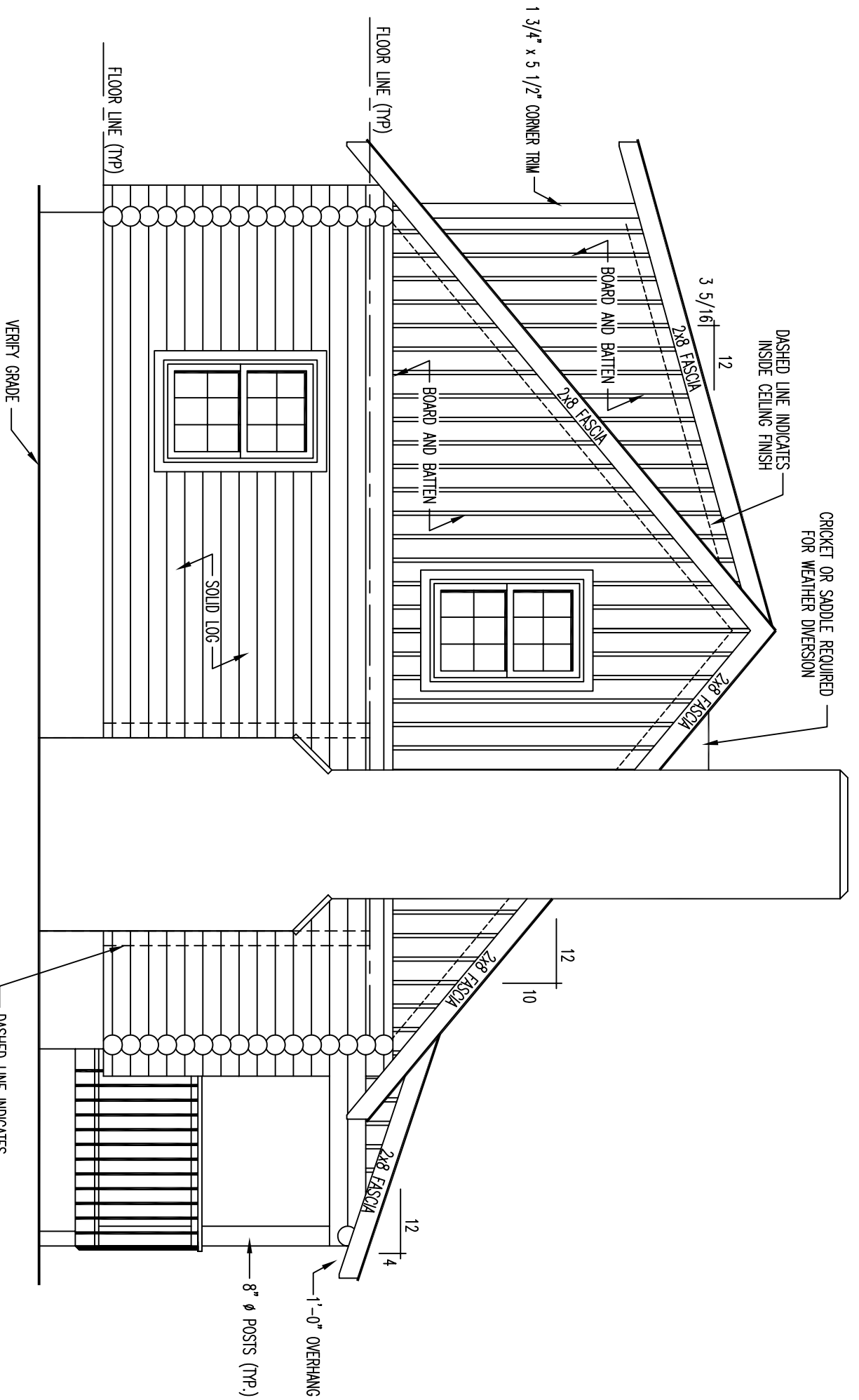
FRONT ELEVATION





REAR ELEVATION

VERIFY GRADE



DASHED LINE INDICATES
INSIDE CEILING FINISH

CRICKET OR SADDLE REQUIRED
FOR WEATHER DIVERSION

1 3/4" x 5 1/2" CORNER TRIM

3 5/16" 12"

2x8 FASCIA

BOARD AND BATTEN

2x8 FASCIA

BOARD AND BATTEN

FLOOR LINE (TYP)

FLOOR LINE (TYP)

SOLID LOG

VERIFY GRADE

12"

10"

2x8 FASCIA

2x8 FASCIA

12"

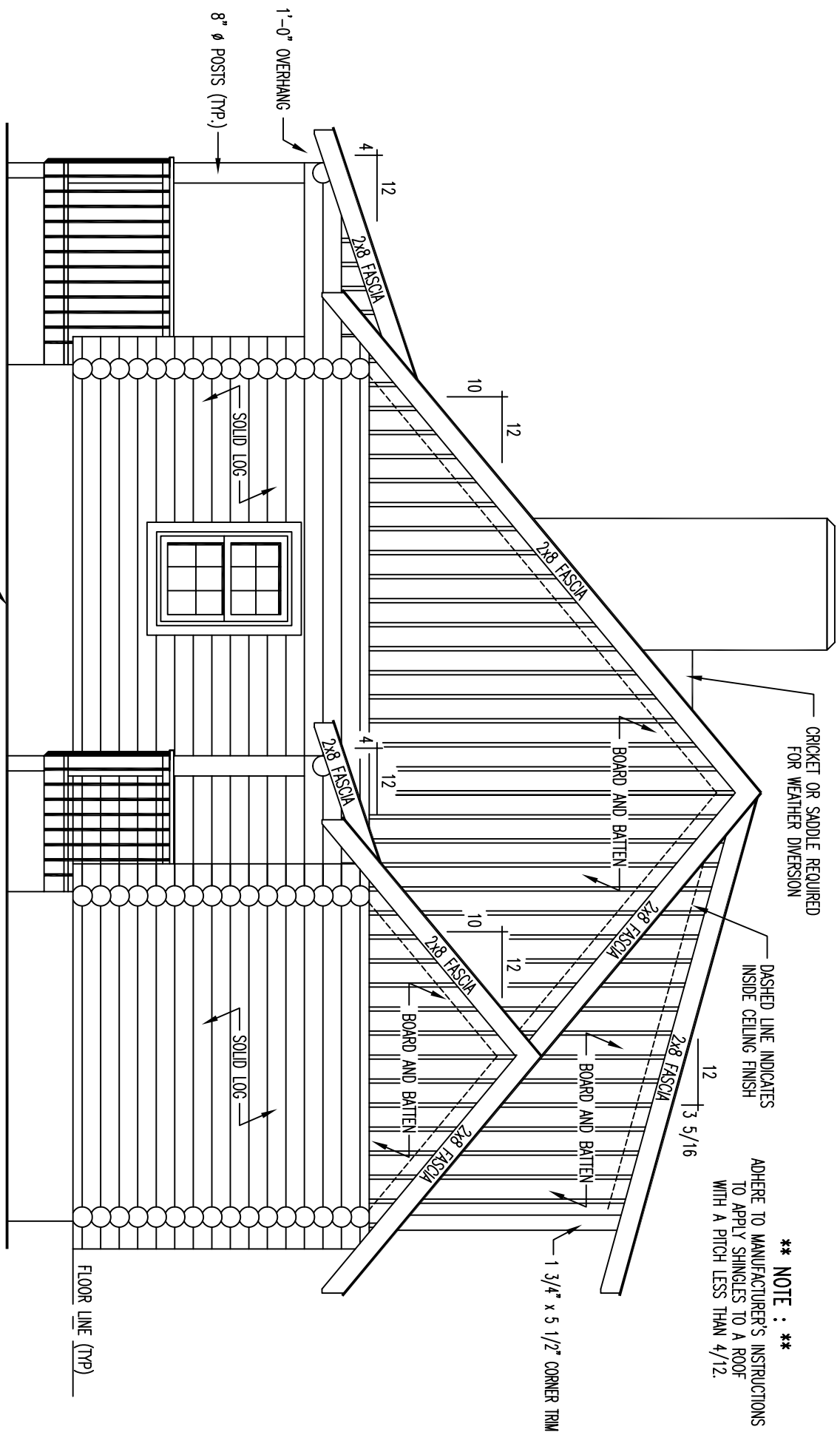
4"

1'-0" OVERHANG

8" Ø POSTS (TYP.)

DASHED LINE INDICATES
6x8 POST BEYOND (TYP.)

LEFT ELEVATION

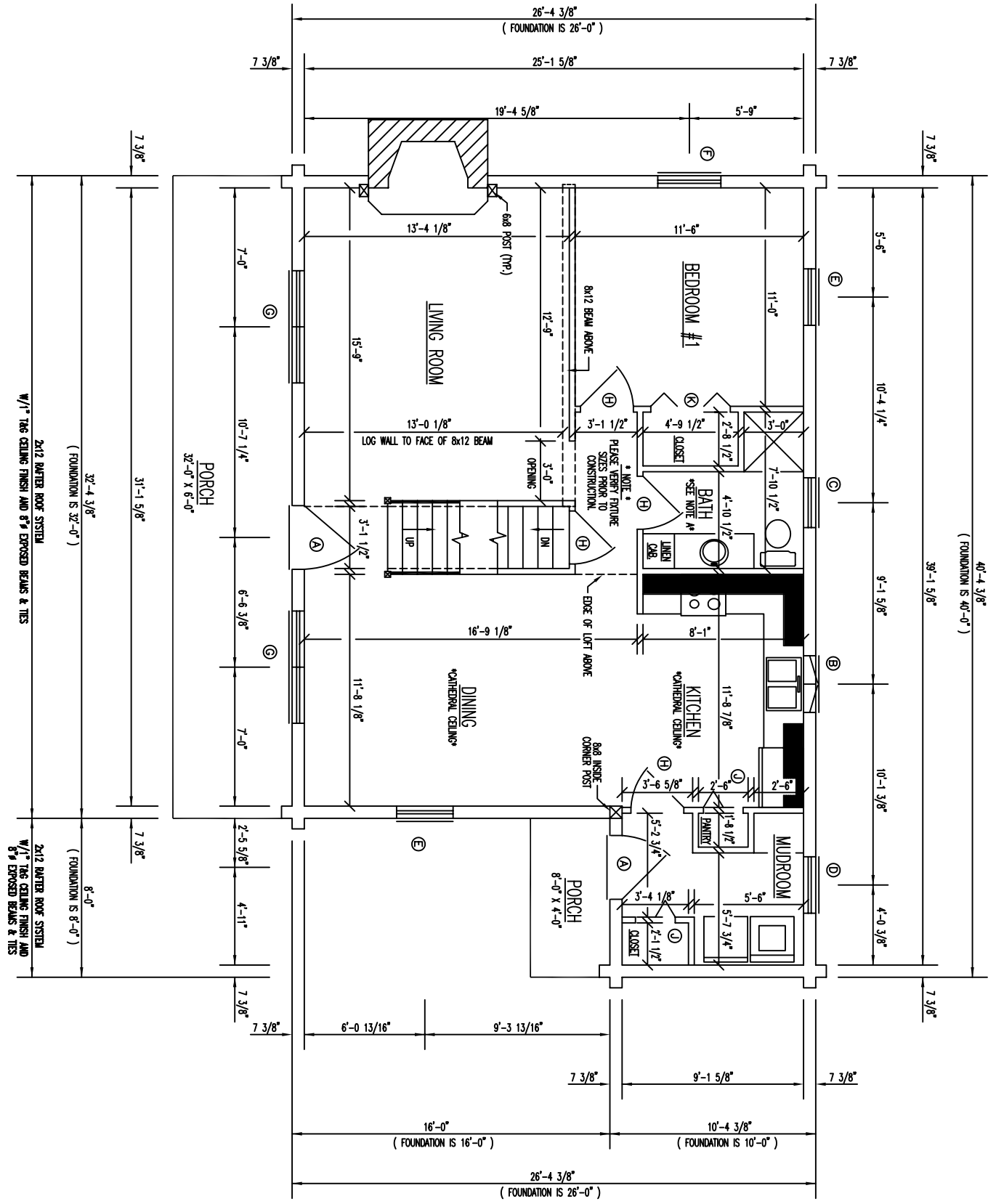


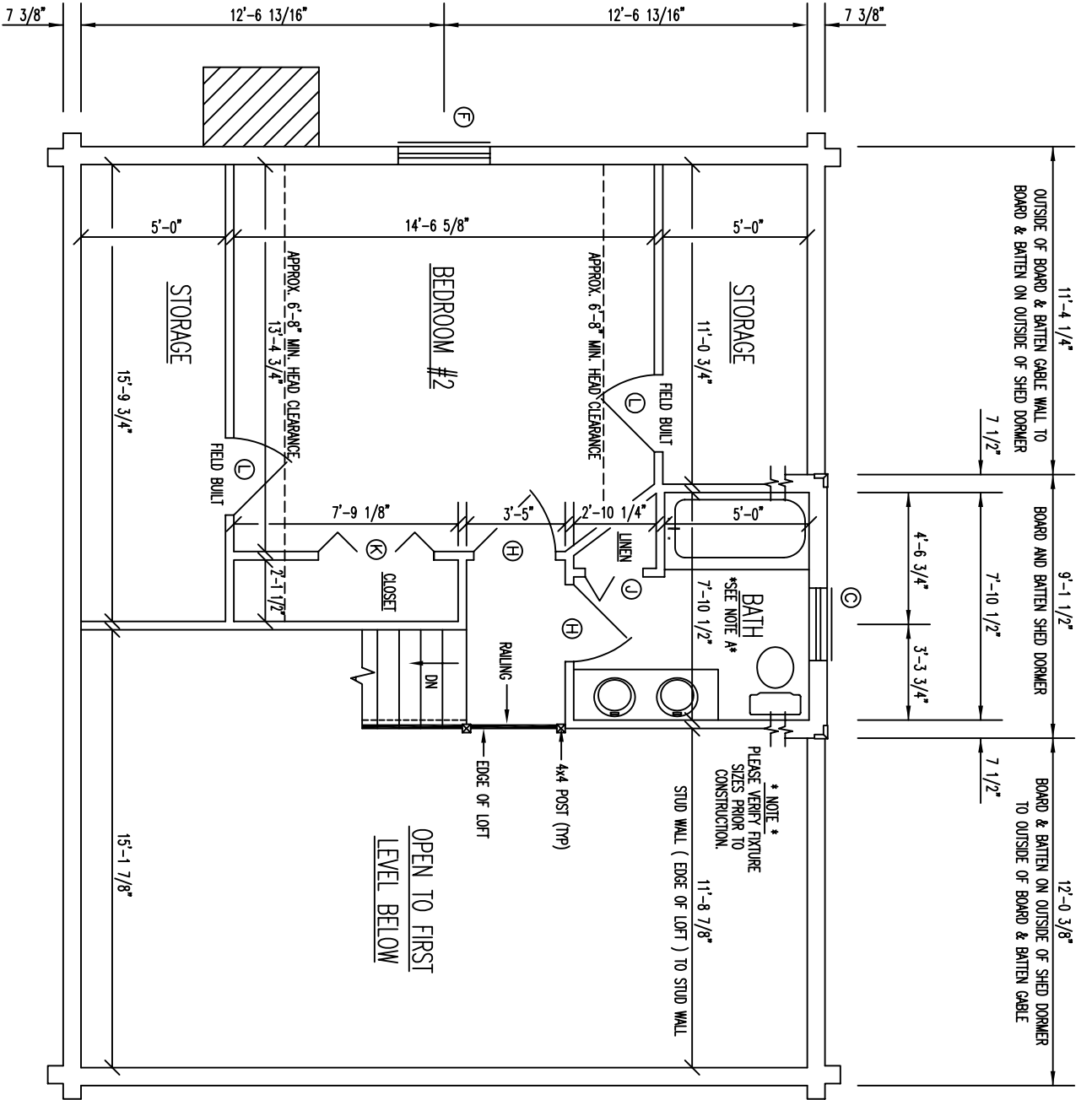
**** NOTE : ****
 ADHERE TO MANUFACTURER'S INSTRUCTIONS
 TO APPLY SHINGLES TO A ROOF
 WITH A PITCH LESS THAN 4/12.

RIGHT ELEVATION

FLOOR PLAN 1ST LEVEL

FLOOR AREA = 912 SQ. FT.





FLOOR PLAN 2nd LEVEL

FLOOR AREA = 470 SQ. FT.