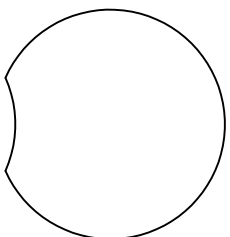


STANDARD VERNON - OPTION A -

FLOOR PLANS AND ELEVATIONS FOR 1998



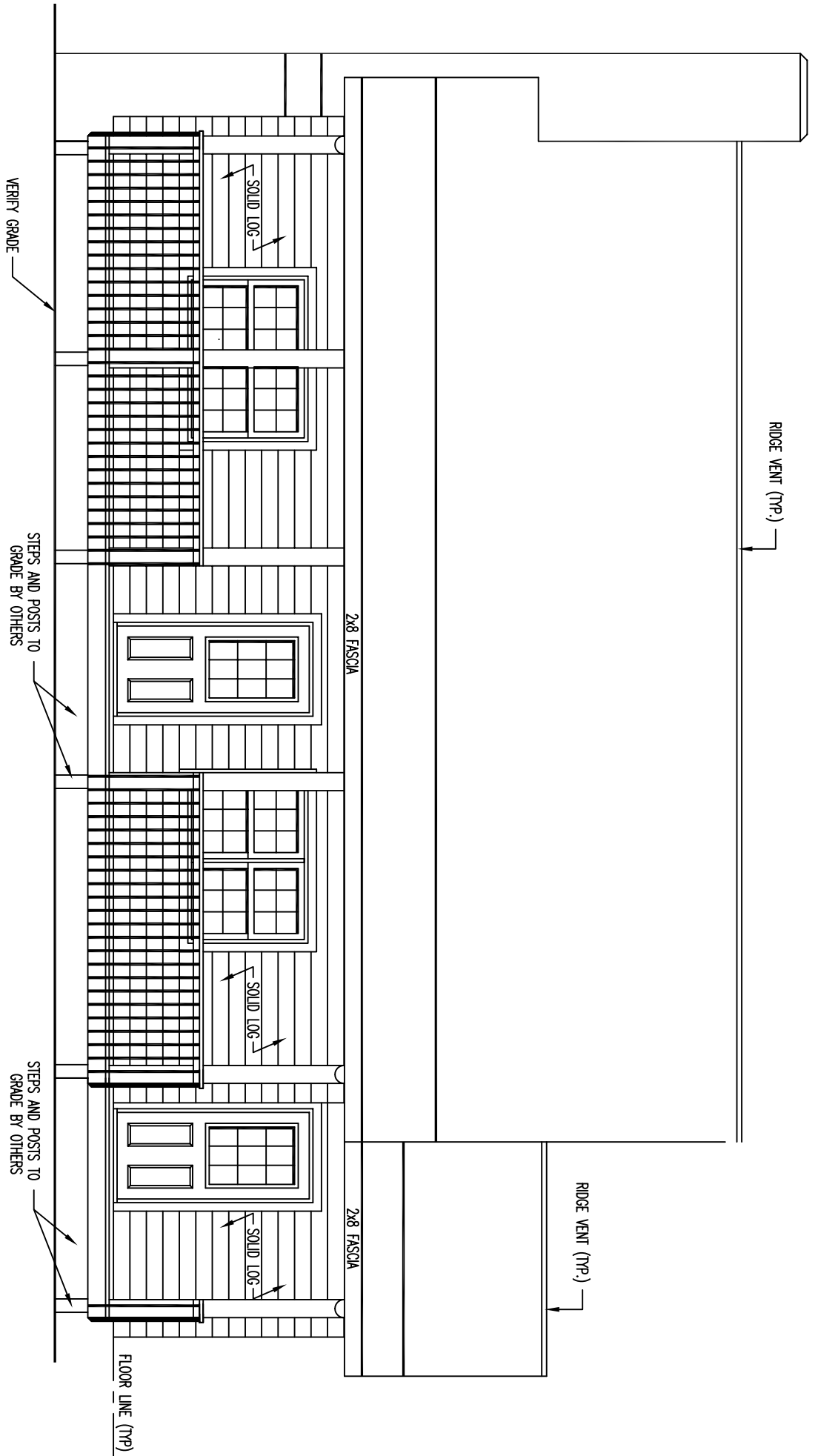
LOG PROFILE

** GENERAL NOTES **

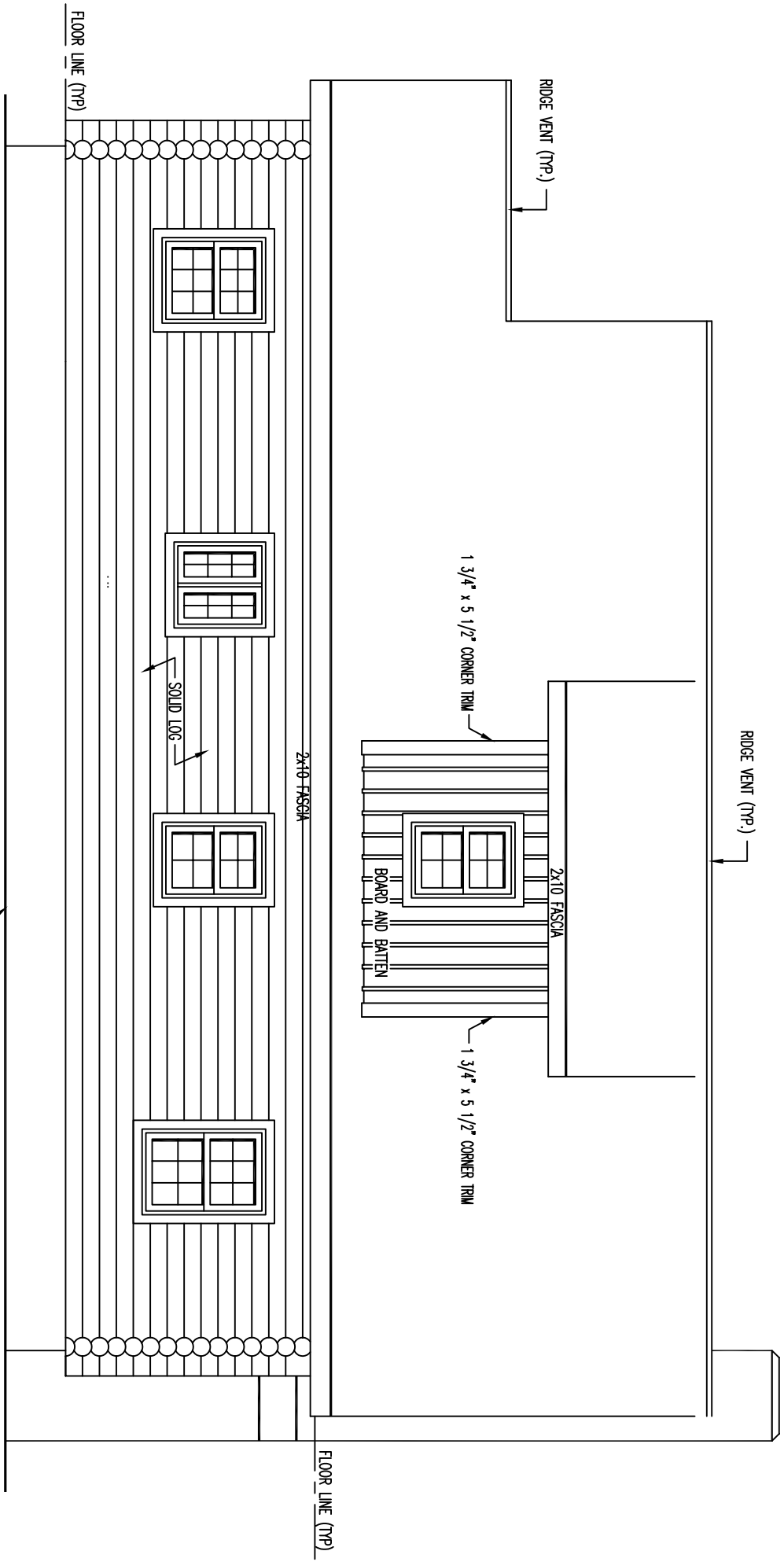
- 8" ROUND SWEDISH COPE WHITE PINE LOGS
- SEE LOG SCHEMATIC FOR COURSES TO SQUARE,
- BOARD AND BATTEN - AT GABLE AND DORMER AREAS,
- ALL INTERIOR STUD WALLS TO BE 24" O.C. UNLESS NOTED,
- ALL EXTERIOR STUD WALLS TO BE 24" O.C. UNLESS NOTED,
- 2nd FLOOR JOISTS LOCATED IN 15th LOG COURSE,
- ALL PARTITION WALLS RUNNING TO THE TOP OF THE 15th LOG COURSE WILL REQUIRE A DOUBLE TOP AND BOTTOM PLATE,
- STEPS AND POSTS TO GRADE BY OWNER / OTHERS,

- 1 3/4" X 3 1/2" EXTERIOR TRIM MATERIAL SHOWN AT ALL DOORS AND WINDOWS UNLESS NOTED,
- ALL OVERHANGS APPROX. 2'-0" UNLESS NOTED,
- ROOF SYSTEM DESIGNED FOR 40 LB. SNOW LOAD,
- WINDOW GRILLE PATTERNS SHOWN ARE FOR ILLUSTRATION ONLY, ACTUAL PATTERNS MAY VARY,
- VERIFY GRADE ON SITE,
- NO LOG SIPING TO BE PROVIDED BELOW PORCH AREA,

912 SQ. FT. FIRST FLOOR	226 SQ. FT. PORCH
804 SQ. FT. SECOND FLOOR	



FRONT ELEVATION



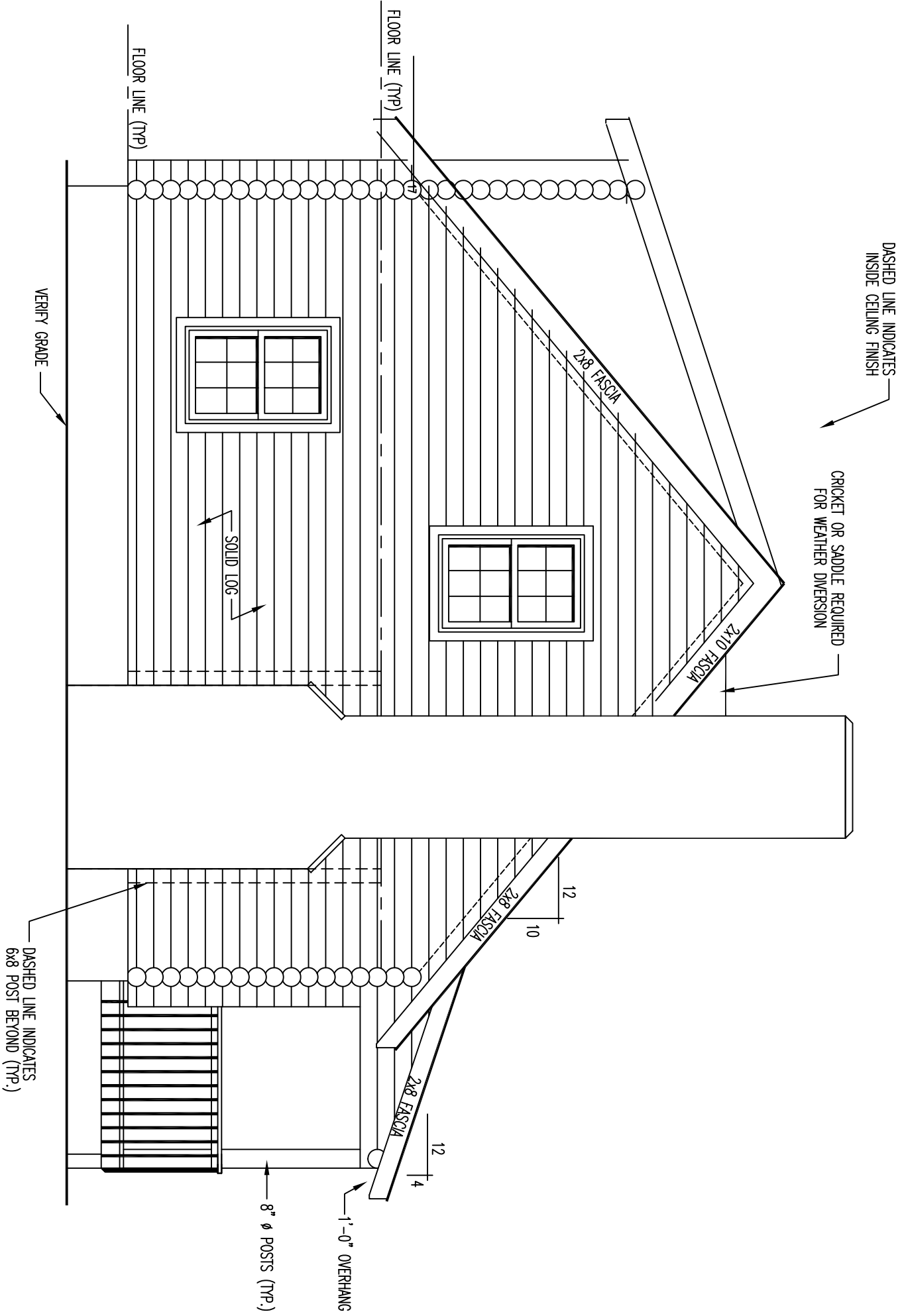
REAR ELEVATION

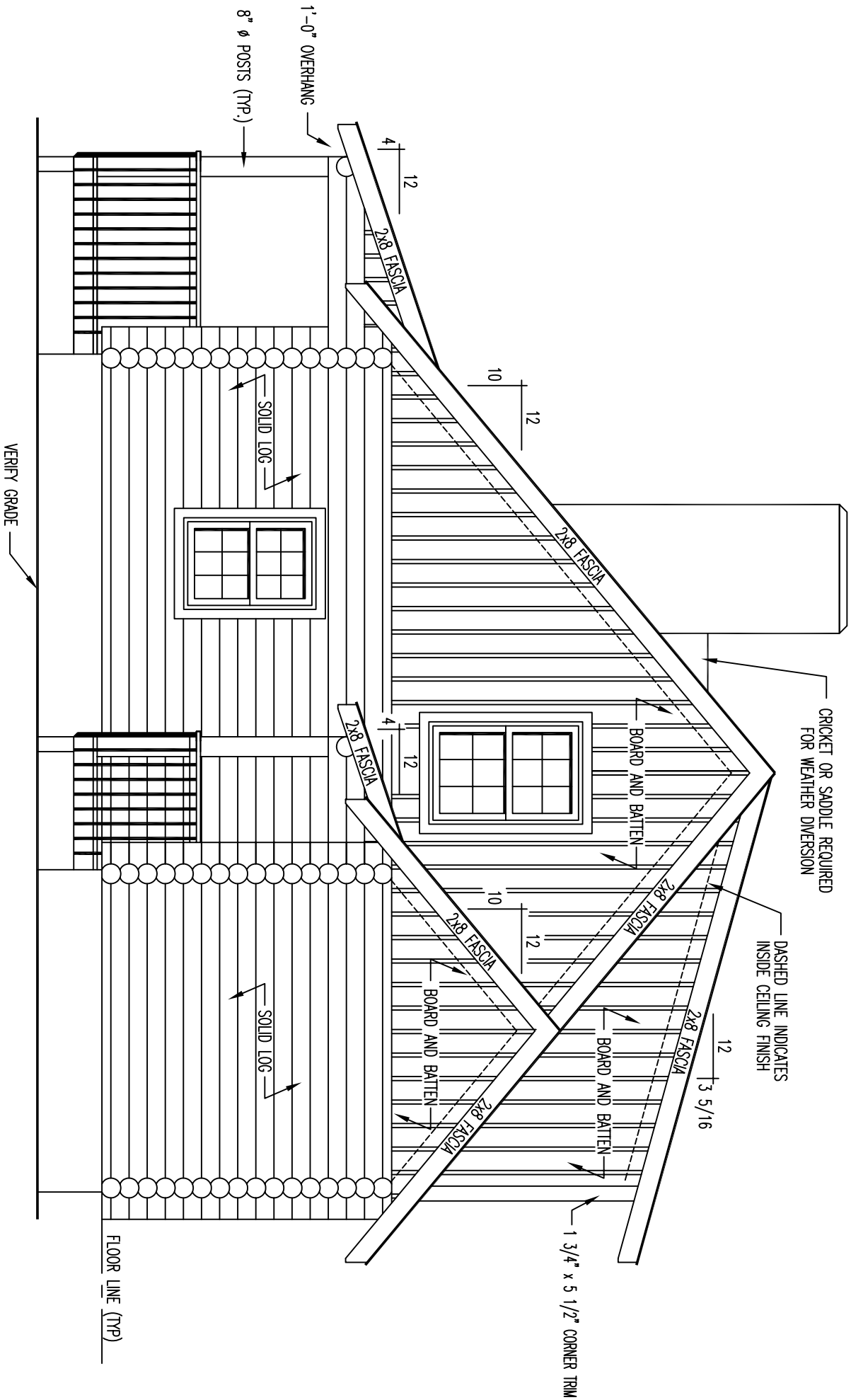
VERIFY GRADE

FLOOR LINE (TYP)

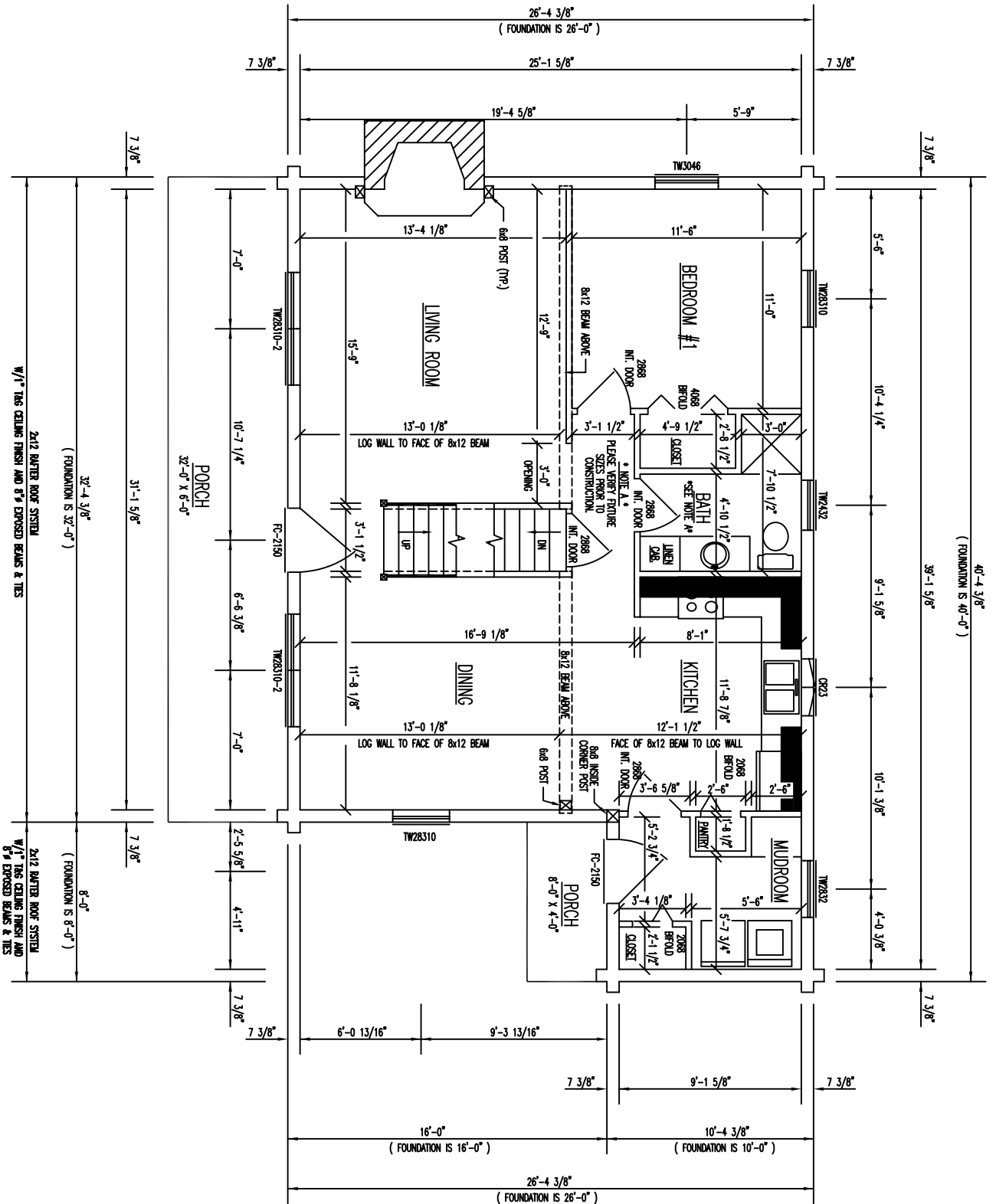
FLOOR LINE (TYP)

LEFT ELEVATION





RIGHT ELEVATION

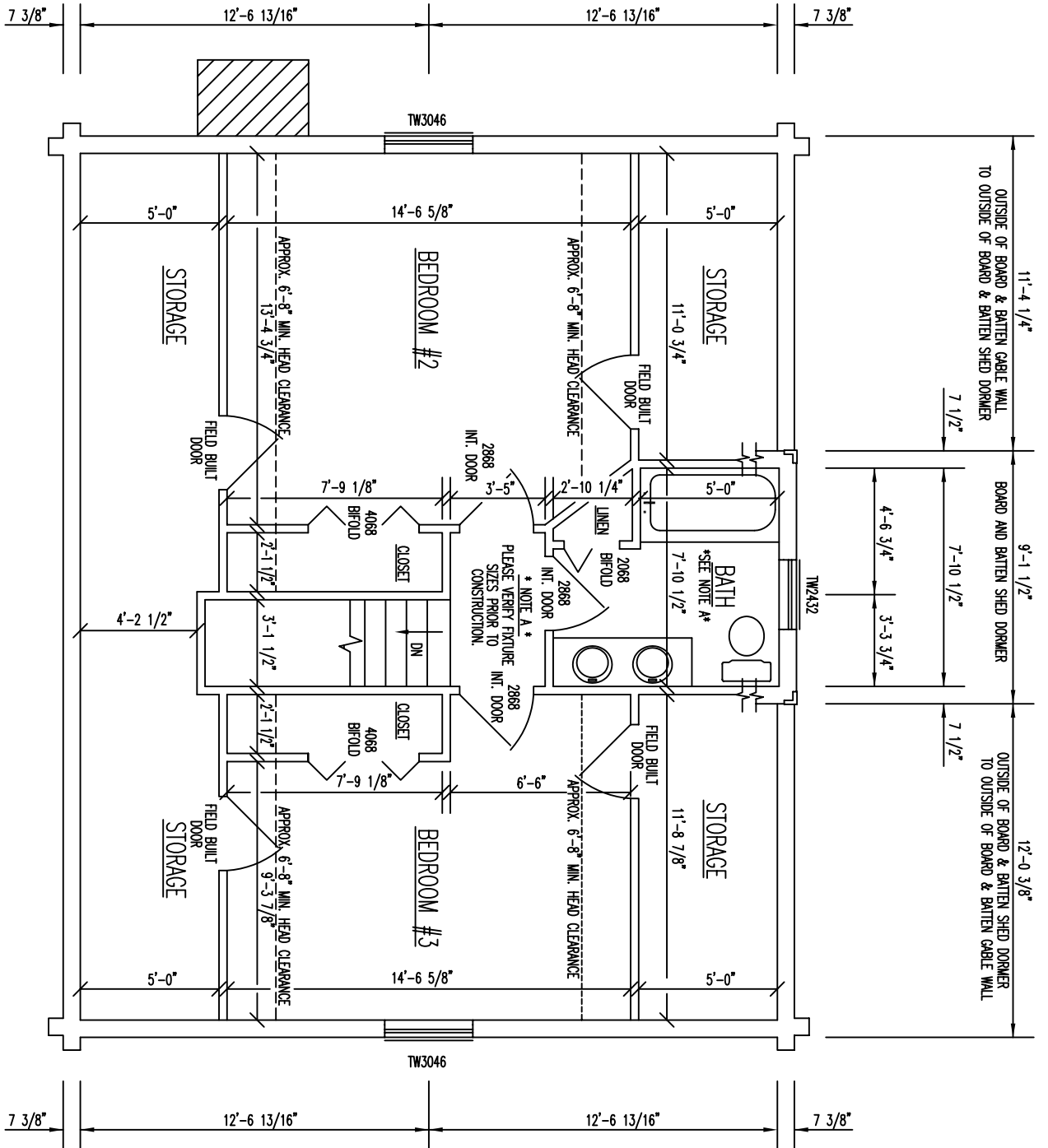


FLOOR PLAN 1ST LEVEL

1ST FLOOR AREA = 912 SQ. FT.
 PORCH FLOOR AREA = 226 SQ. FT.

2x12 WATER ROOF SYSTEM
 W/1" TAG CEILING FINISH AND 8" EXPOSED BEAMS & TIES

2x12 WATER ROOF SYSTEM
 W/1" TAG CEILING FINISH AND 8" EXPOSED BEAMS & TIES



FLOOR PLAN 2nd LEVEL

2ND FLOOR AREA = 804 SQ. FT.