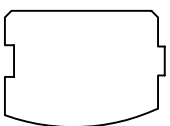


# PETE & KARLA TOSTEN

## FLOOR PLANS AND ELEVATIONS

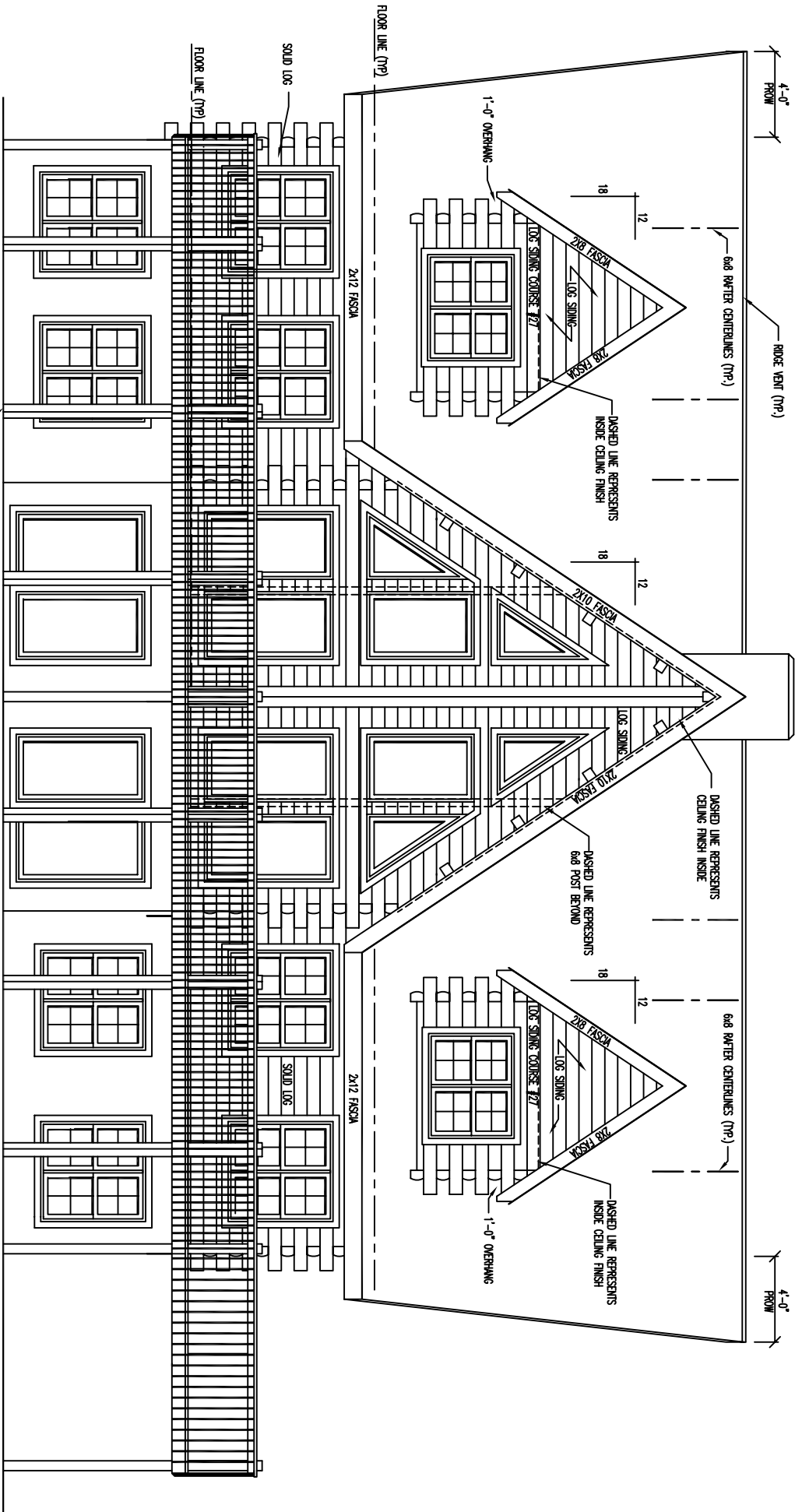


LOG PROFILE

### \*\* GENERAL NOTES \*\*

- 6 X 8 D SINGLE TONGUE WHITE PINE LOGS
- 16 LOG COURSES TO SQUARE - AT ENTIRE HOUSE,
- 27 LOG/ LOG SIPING COURSES TO SQUARE - AT DORMERS,
- ALL INTERIOR STUD WALLS TO BE 24" O.C. UNLESS NOTED,
- 2nd FLOOR JOISTS LOCATED IN 14th LOG COURSE,
- ALL PARTITION WALLS RUNNING TO THE TOP OF THE 14th LOG COURSE WILL REQUIRE A DOUBLE TOP AND BOTTOM PLATE,
- NO LOG SIPING TO BE PROVIDED BELOW PORCH / DECK AREAS,
- STEPS AND POSTS TO GRADE ARE BY OWNER / OTHERS,
- 1 3/4" X 3 1/2" EXTERIOR TRIM MATERIAL SHOWN AT ALL DOORS AND WINDOW UNLESS NOTED,
- EXTERIOR TRIM AT ARCH OF CIRCLE TOP IS 2x10 MATERIAL,
- ALL OVERHANGS APPROX. 2'-0" UNLESS NOTED,
- ROOF SYSTEM DESIGNED FOR 40lb. SNOW LOAD,
- WINDOW GRILLE PATTERNS SHOWN ARE FOR ILLUSTRATION ONLY, ACTUAL PATTERNS MAY VARY,
- VERIFY GRADE ON SITE,

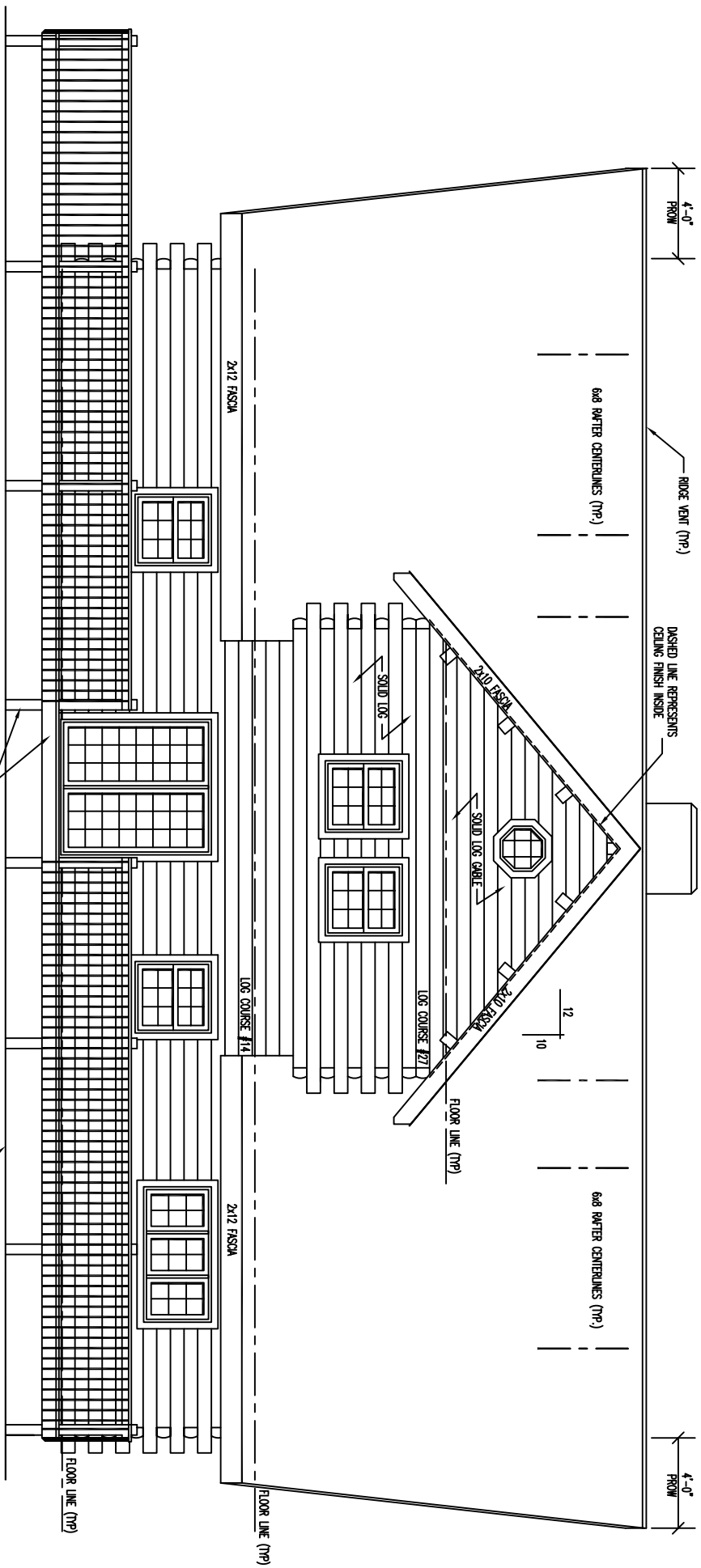
1,528 SQ. FT. FIRST FLOOR	258 SQ. FT. THIRD FLOOR
1,222 SQ. FT. SECOND FLOOR	1,744 SQ. FT. DECK



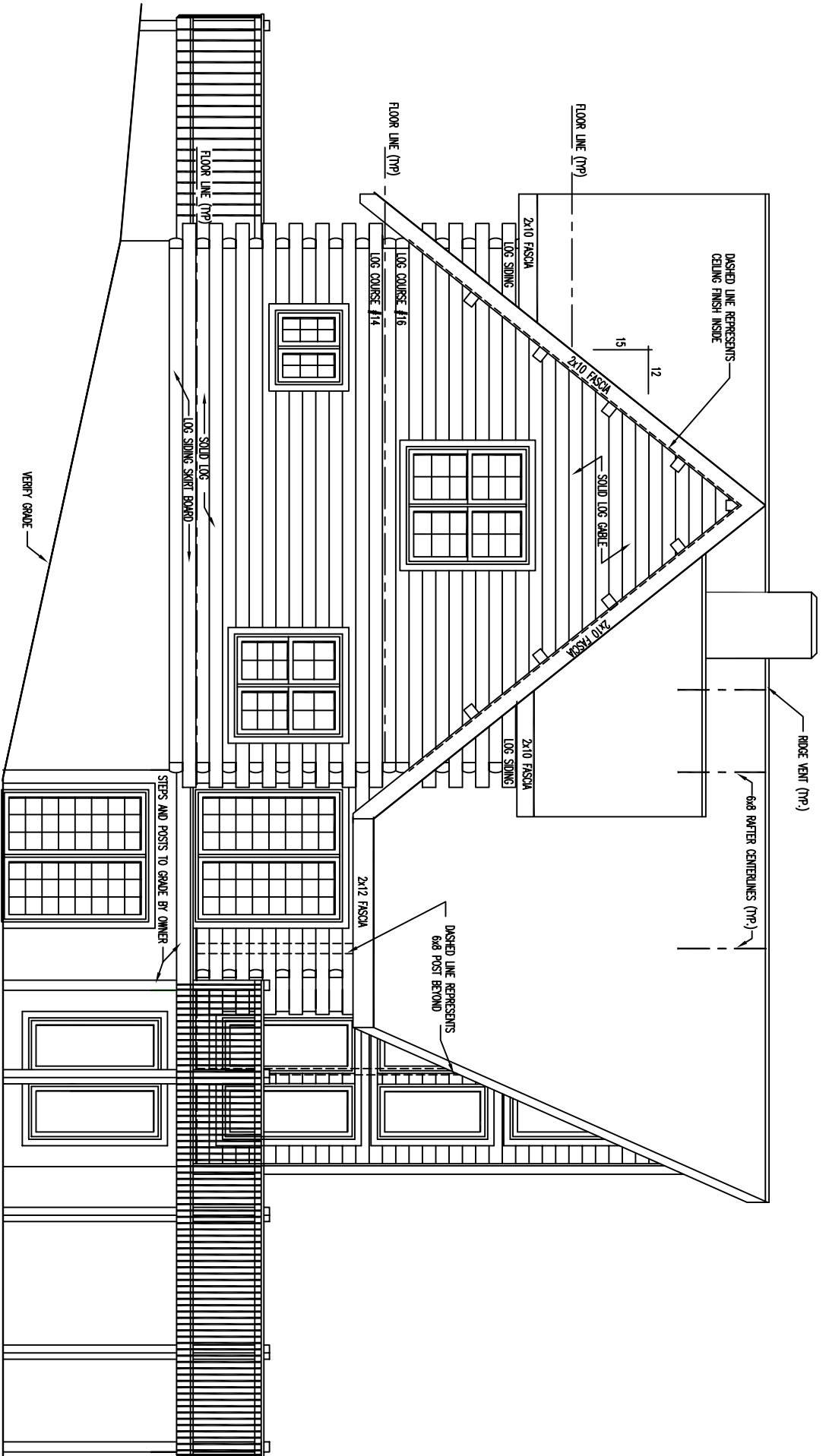
FRONT ELEVATION

\*\* NOTE: \*\*

EXTERIOR WINDOW TRIM REQUIRED AROUND PERIMETER OF FRONT WINDOWS AND TRIANGLE WINDOWS - NO EXTERIOR TRIM REQUIRED BETWEEN WINDOWS - AREA BETWEEN WINDOWS IS LOG SIDING - SEE TRIANGLE WINDOW DETAIL



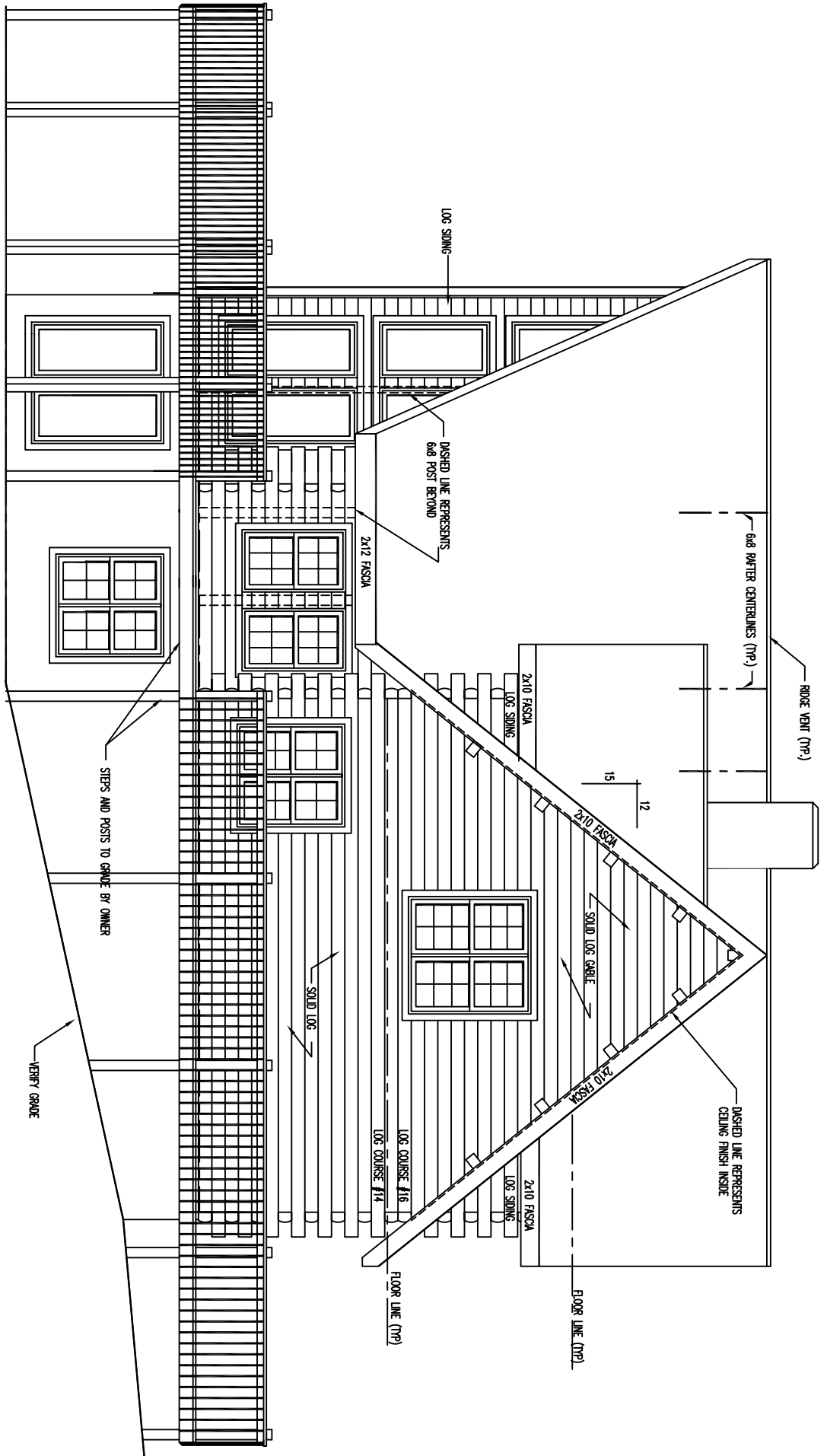
REAR ELEVATION



LEFT ELEVATION

\*\* NOTE: \*\*

EXTERIOR WINDOW TRIM REQUIRED AROUND PERIMETER OF  
 WINDOWS - NO EXTERIOR TRIM REQUIRED BETWEEN  
 WINDOWS - AREA BETWEEN WINDOWS IS LOG SIDING



**RIGHT ELEVATION**

**\*\* NOTE: \*\***

EXTERIOR WINDOW TRIM REQUIRED AROUND PERIMETER OF WINDOWS - NO EXTERIOR TRIM REQUIRED BETWEEN WINDOWS - AREA BETWEEN WINDOWS IS LOG SIDING

# FLOOR PLAN 1st LEVEL

--- INDICATES LOAD BEARING WALLS

