

# STANDARD SYLVANDEL

## FLOOR PLANS AND ELEVATIONS FOR 1998

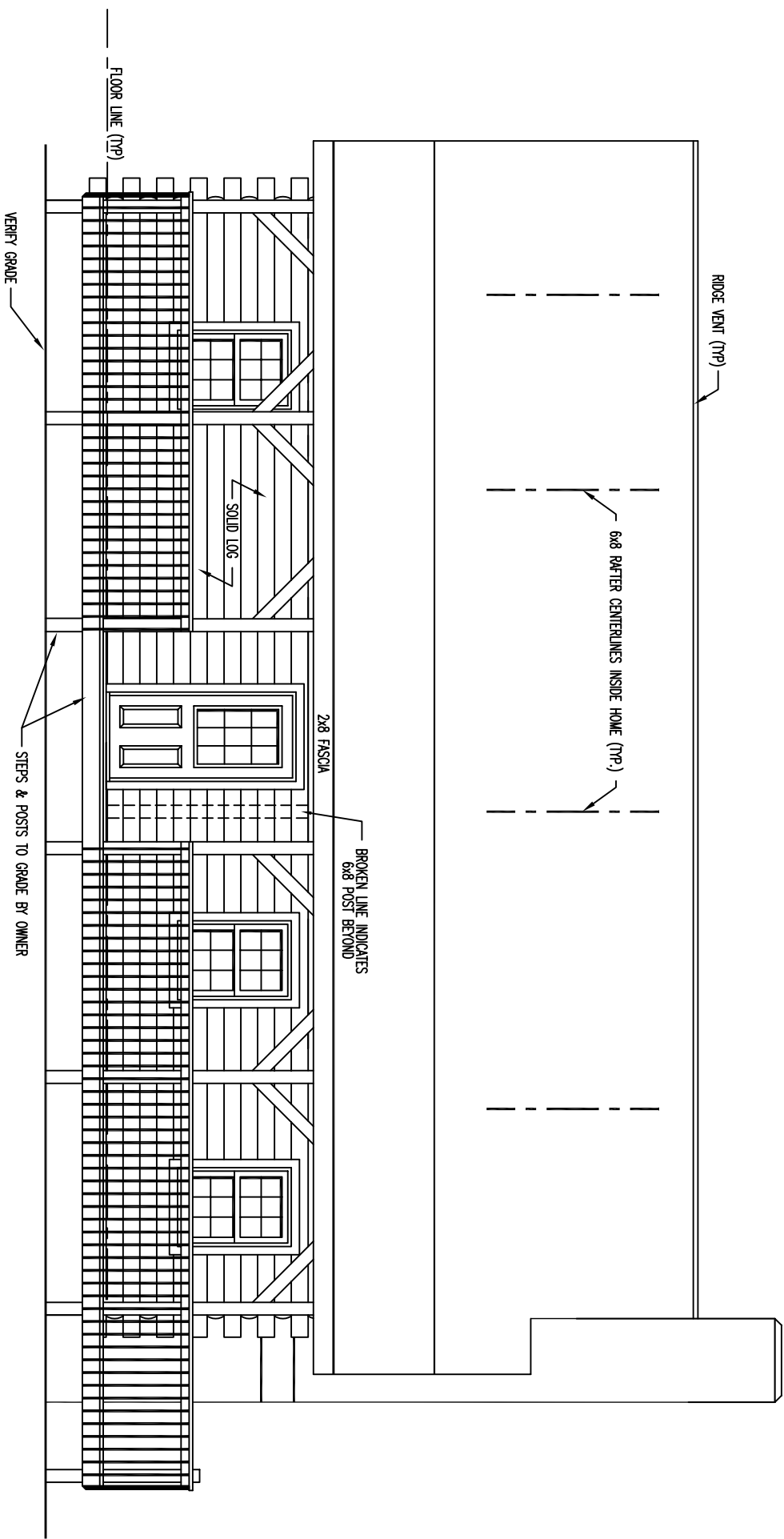


LOG PROFILE

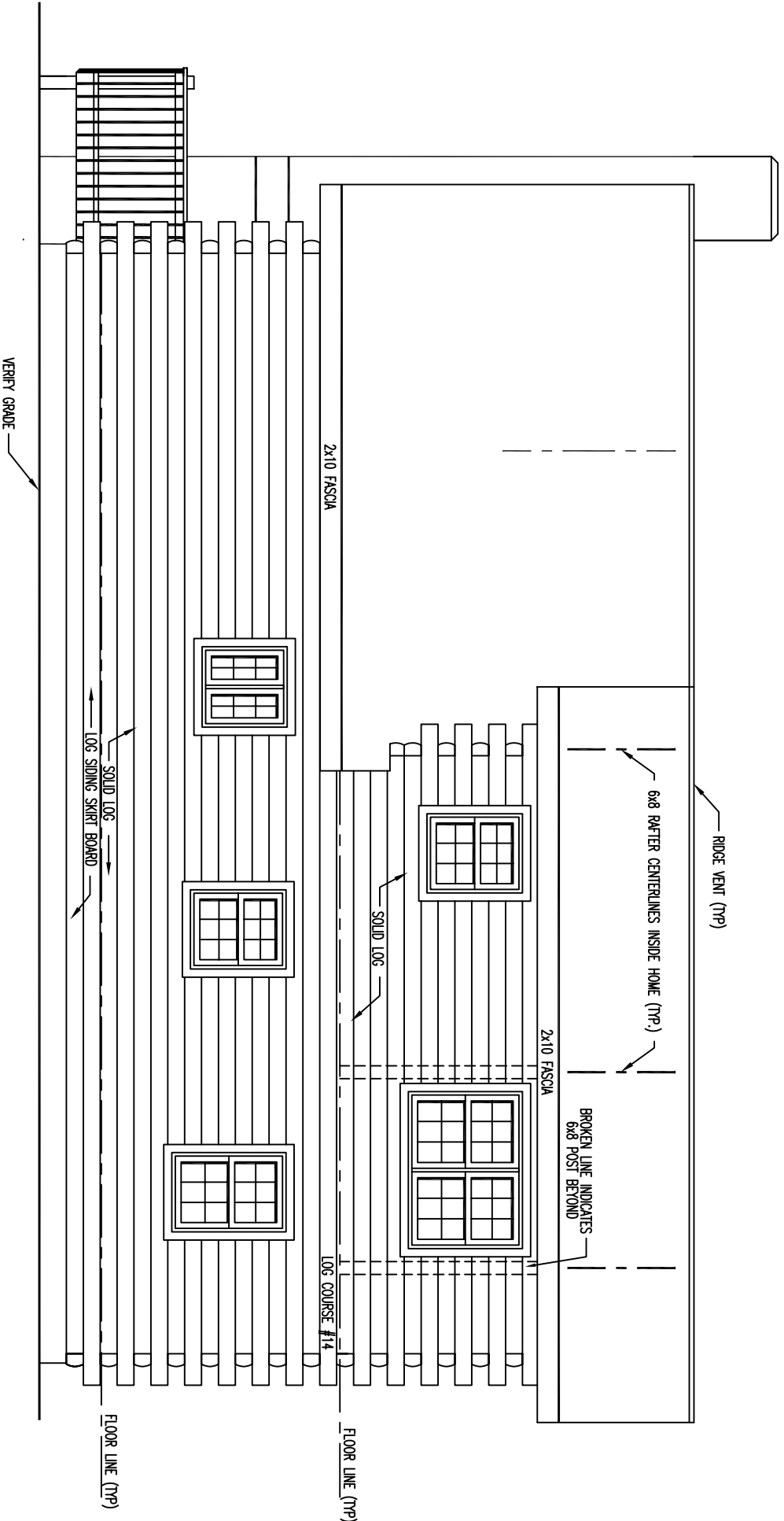
### \*\* GENERAL NOTES \*\*

- 6 X 8 D SINGLE TONGUE WHITE PINE LOGS
- 16 LOG COURSES TO SQUARE - AT CATHEDRAL AREA.
- 14 LOG COURSES TO SQUARE - AT WING AREA.
- ALL INTERIOR STUD WALLS TO BE 24" O.C. UNLESS NOTED.
- 2nd FLOOR JOISTS LOCATED IN 14th LOG COURSE.
- ALL PARTITION WALLS RUNNING TO THE TOP OF THE 14th LOG COURSE WILL REQUIRE A DOUBLE TOP AND BOTTOM PLATE.
- STEPS AND POSTS TO GRADE BY OWNER / OTHERS.
- 1 3/4" X 3 1/2" EXTERIOR TRIM MATERIAL SHOWN AT ALL DOORS AND WINDOWS UNLESS NOTED.
- ALL OVERHANGS APPROX. 2'-0" UNLESS NOTED.
- ROOF SYSTEM DESIGNED FOR 40 LB. SNOW LOAD.
- WINDOW GRILLE PATTERNS SHOWN ARE FOR ILLUSTRATION ONLY, ACTUAL PATTERNS MAY VARY.
- VERIFY GRADE ON SITE.
- NO LOG SIPING TO BE PROVIDED BELOW DECK AREA.

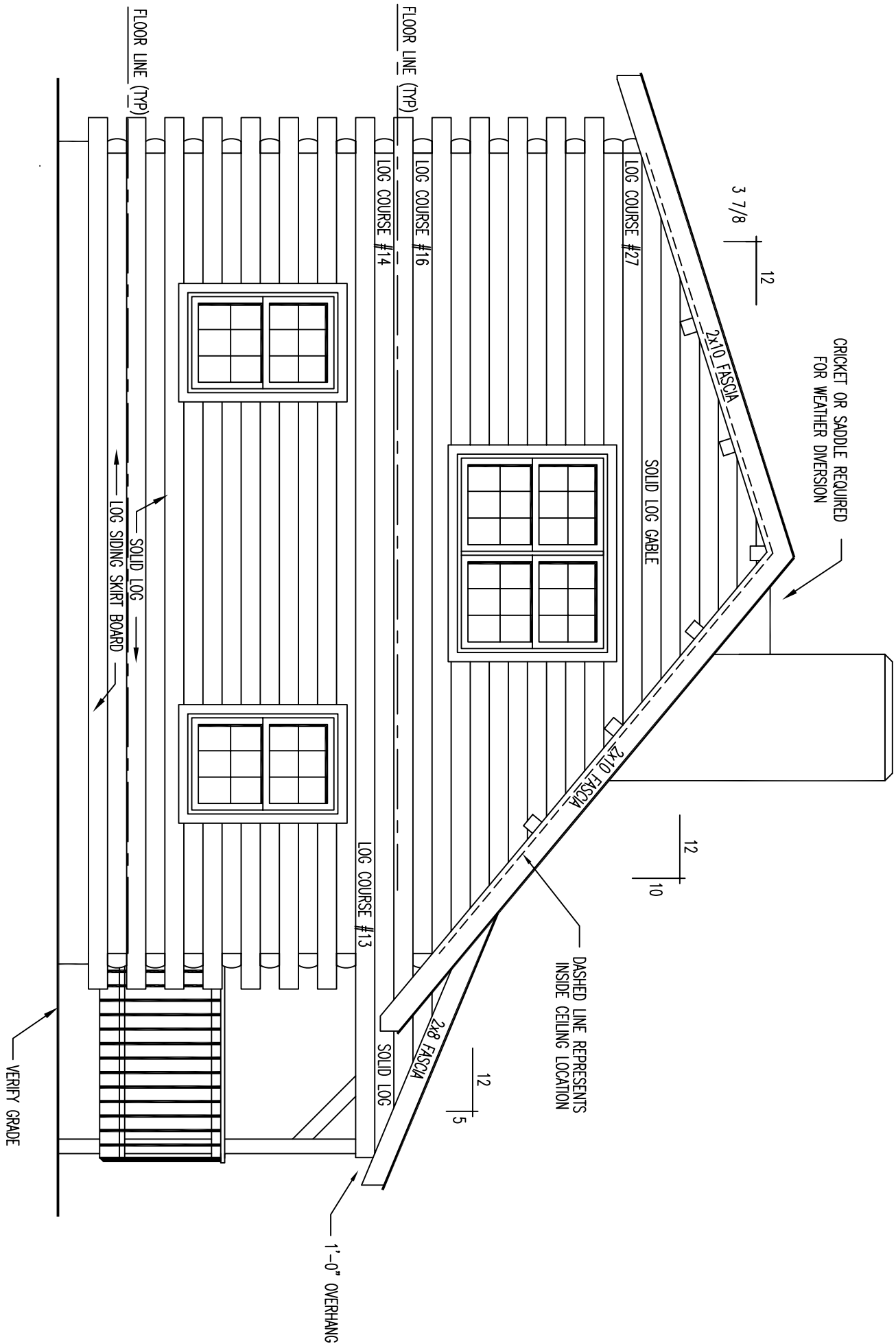
1040 SQ. FT., FIRST FLOOR	435 SQ. FT., PORCH / DECK
790 SQ. FT., SECOND FLOOR	



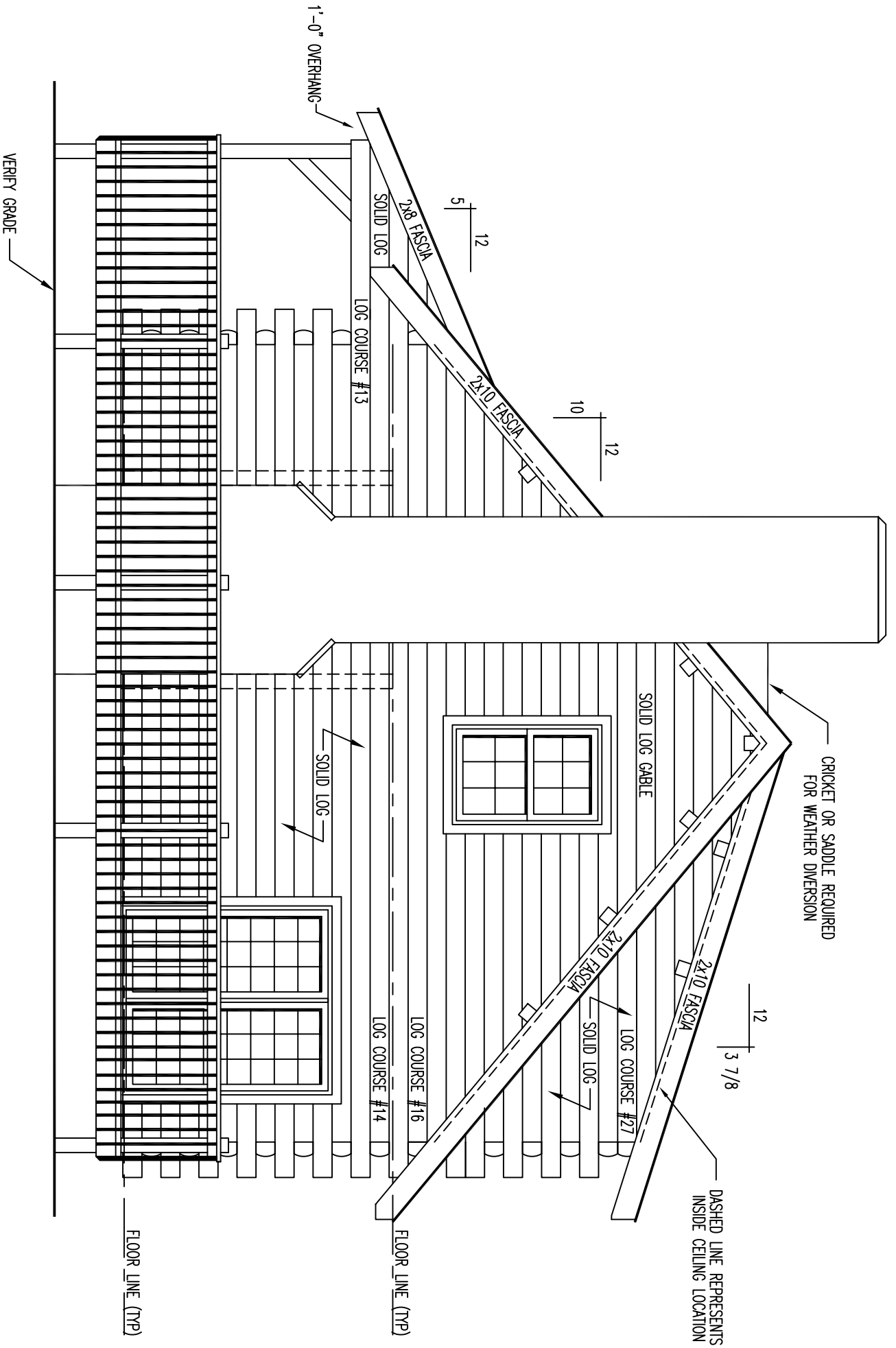
FRONT ELEVATION



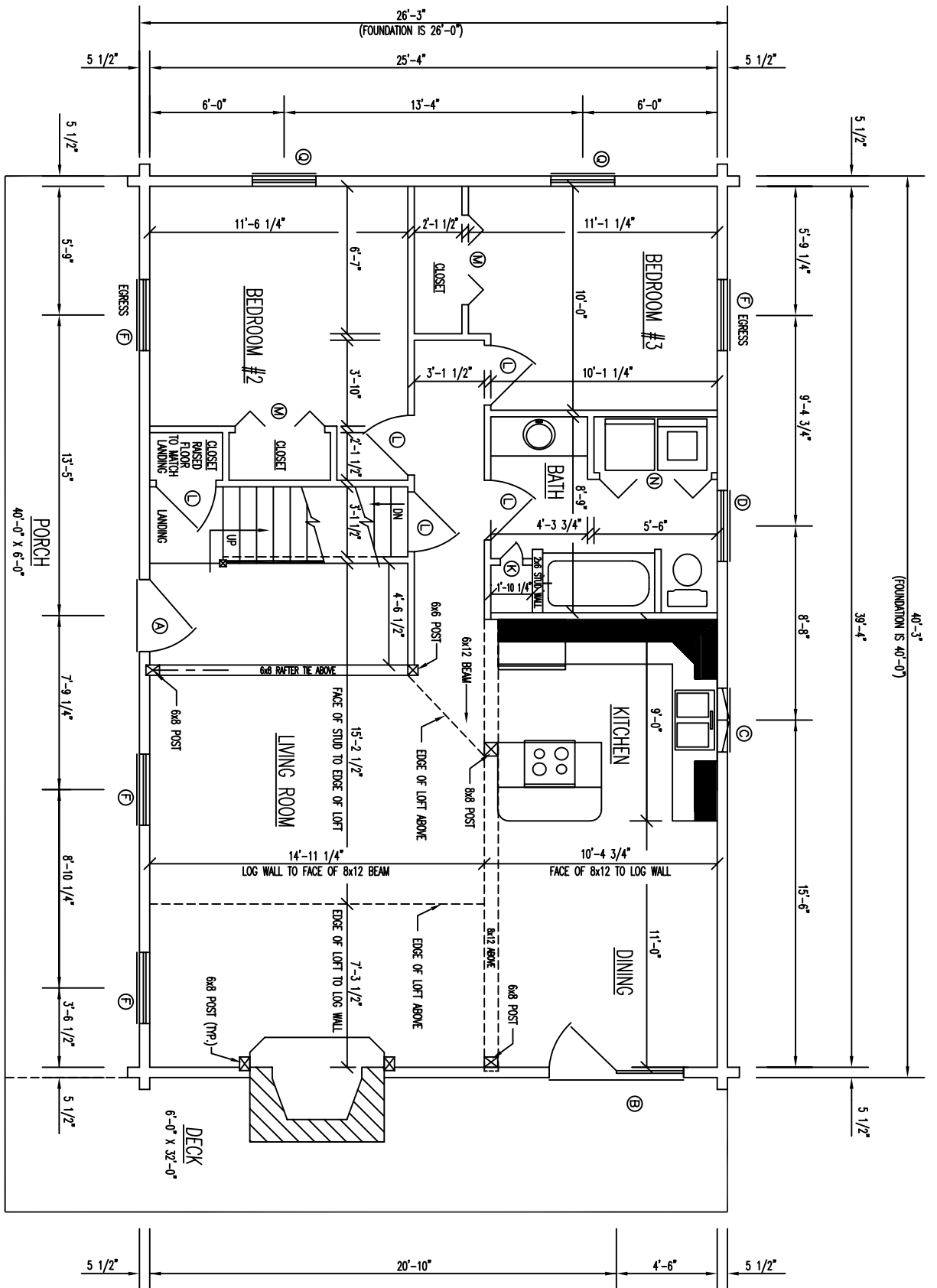
REAR ELEVATION



LEFT ELEVATION



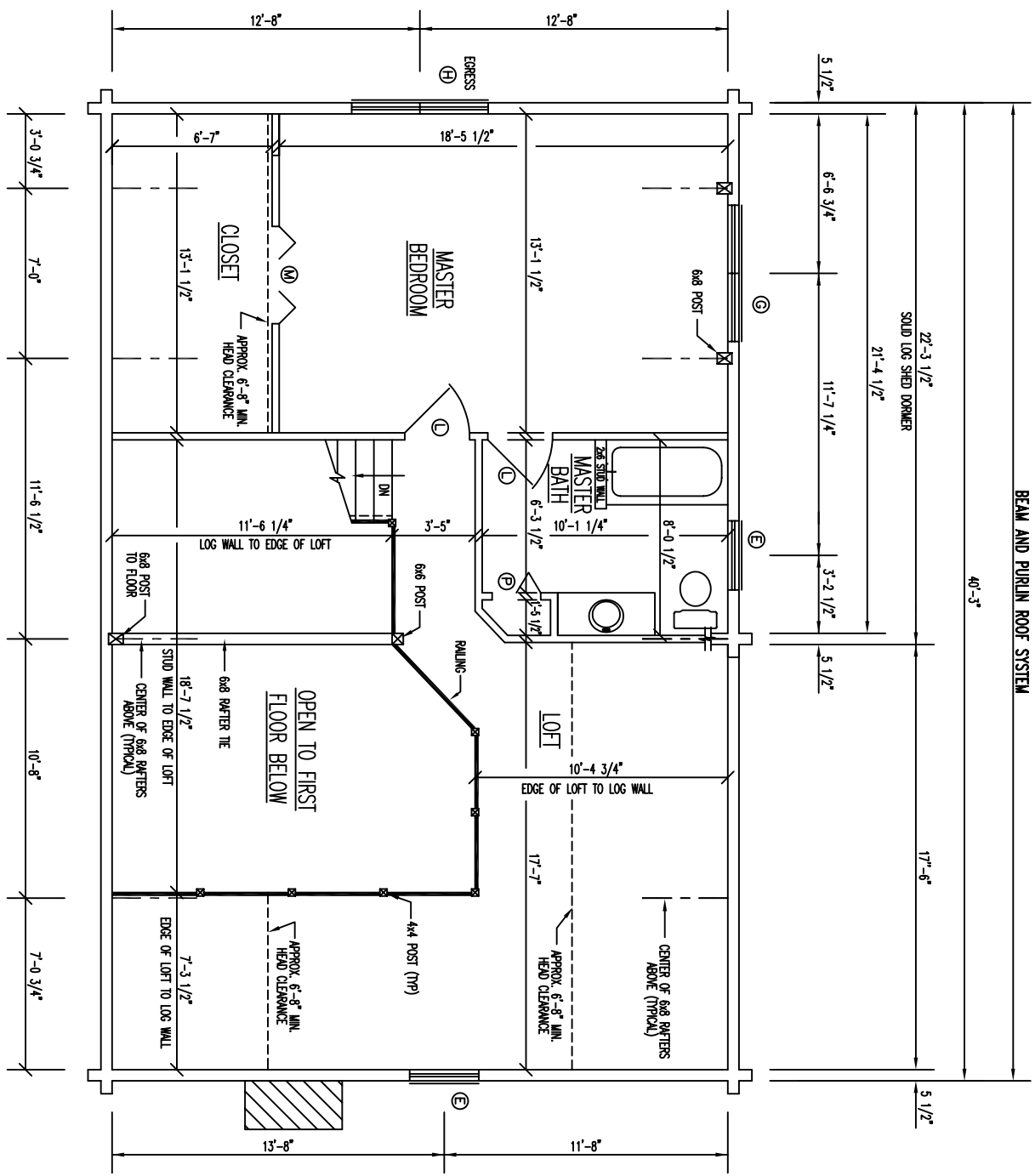
RIGHT ELEVATION



FLOOR PLAN 1st LEVEL

1st FLOOR AREA = 1040 SQ. FT.

PORCH/DECK FLOOR AREA = 435 SQ. FT.



RAFTER CENTERLINES

FLOOR PLAN 2nd LEVEL

2ND FLOOR AREA = 790 SQ. FT.