

STANDARD 15' X 16' SUN PORCH

FLOOR PLANS AND ELEVATIONS FOR 1998



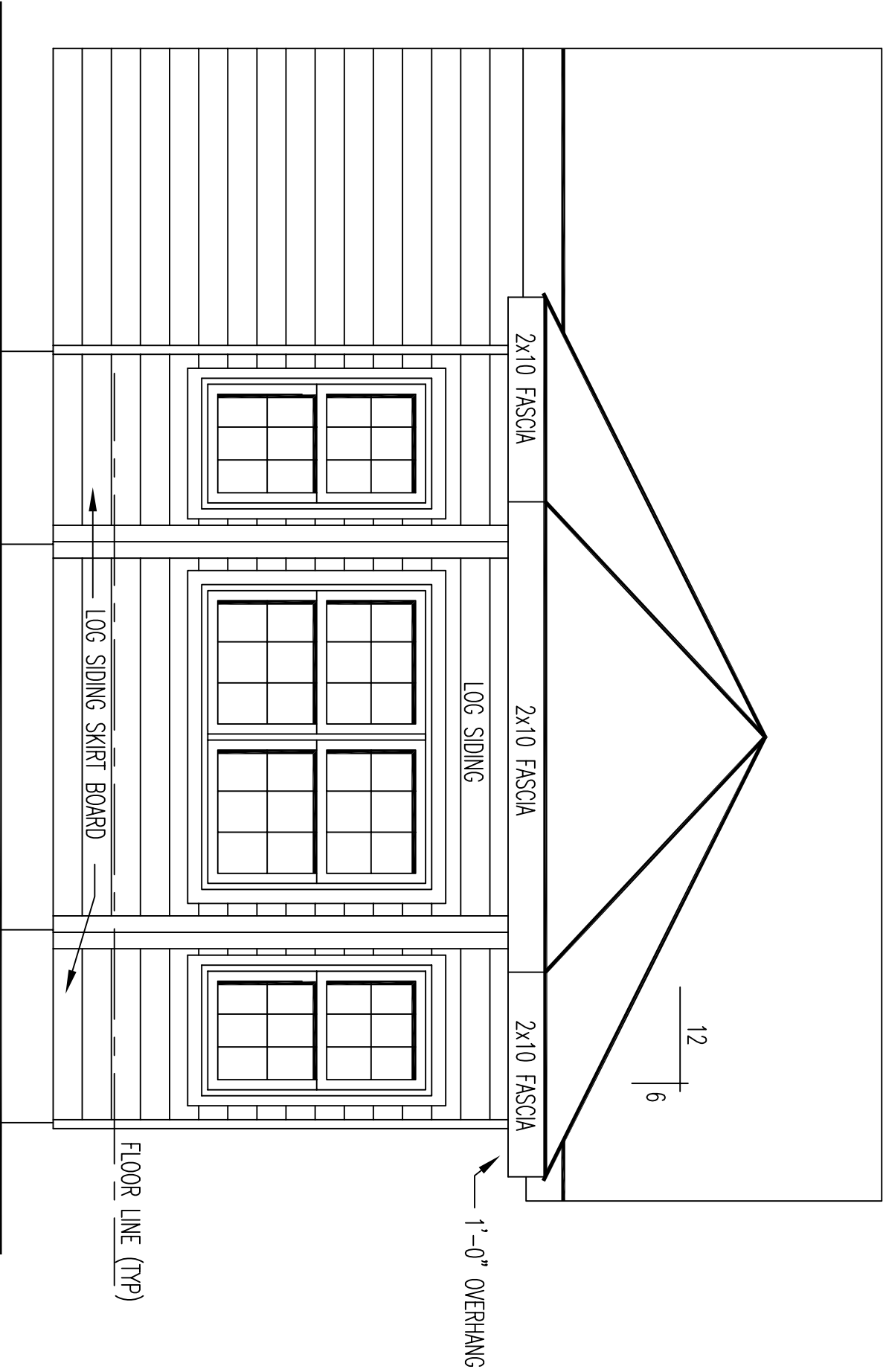
LOG SIDING PROFILE

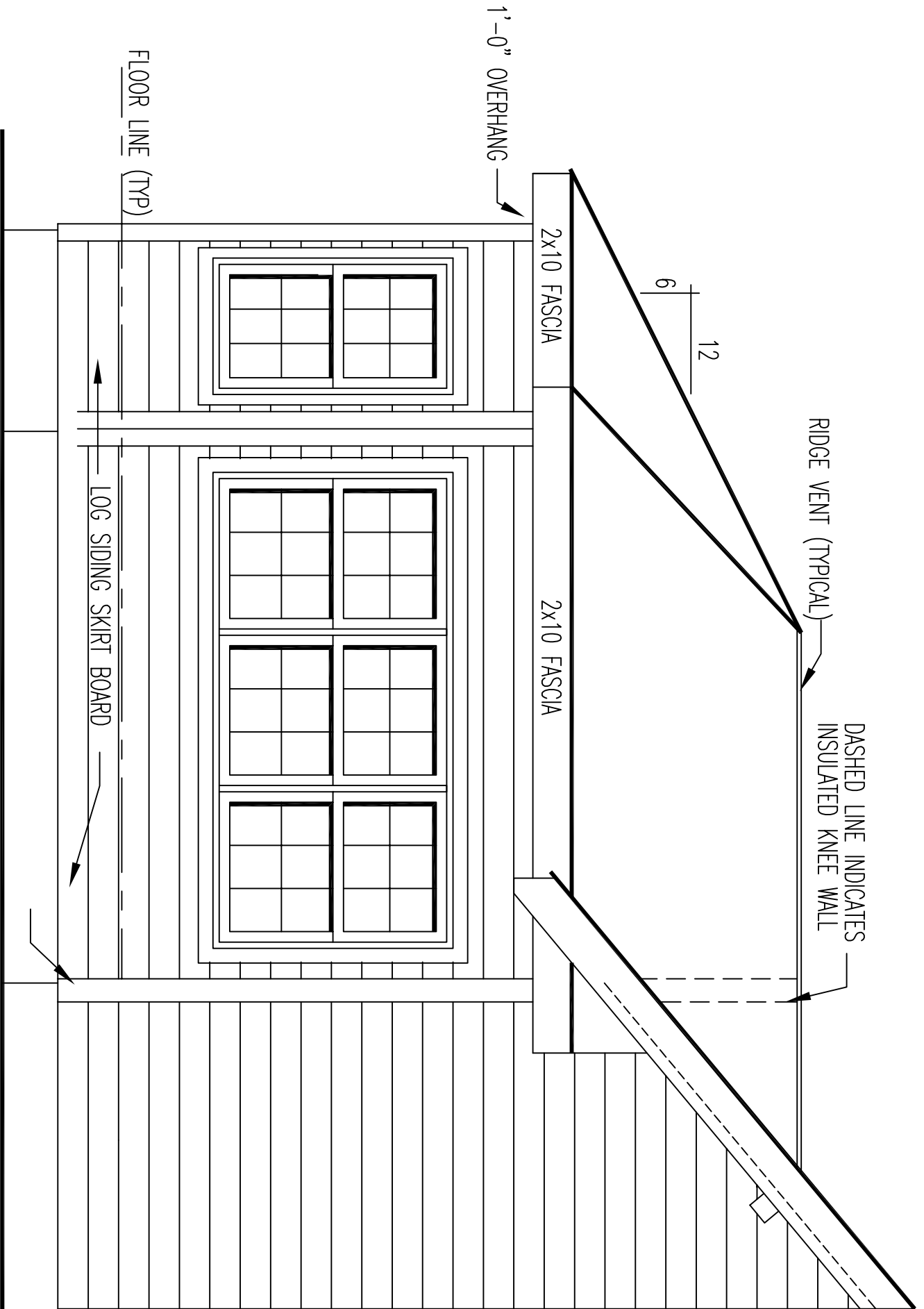
** * GENERAL NOTES * *

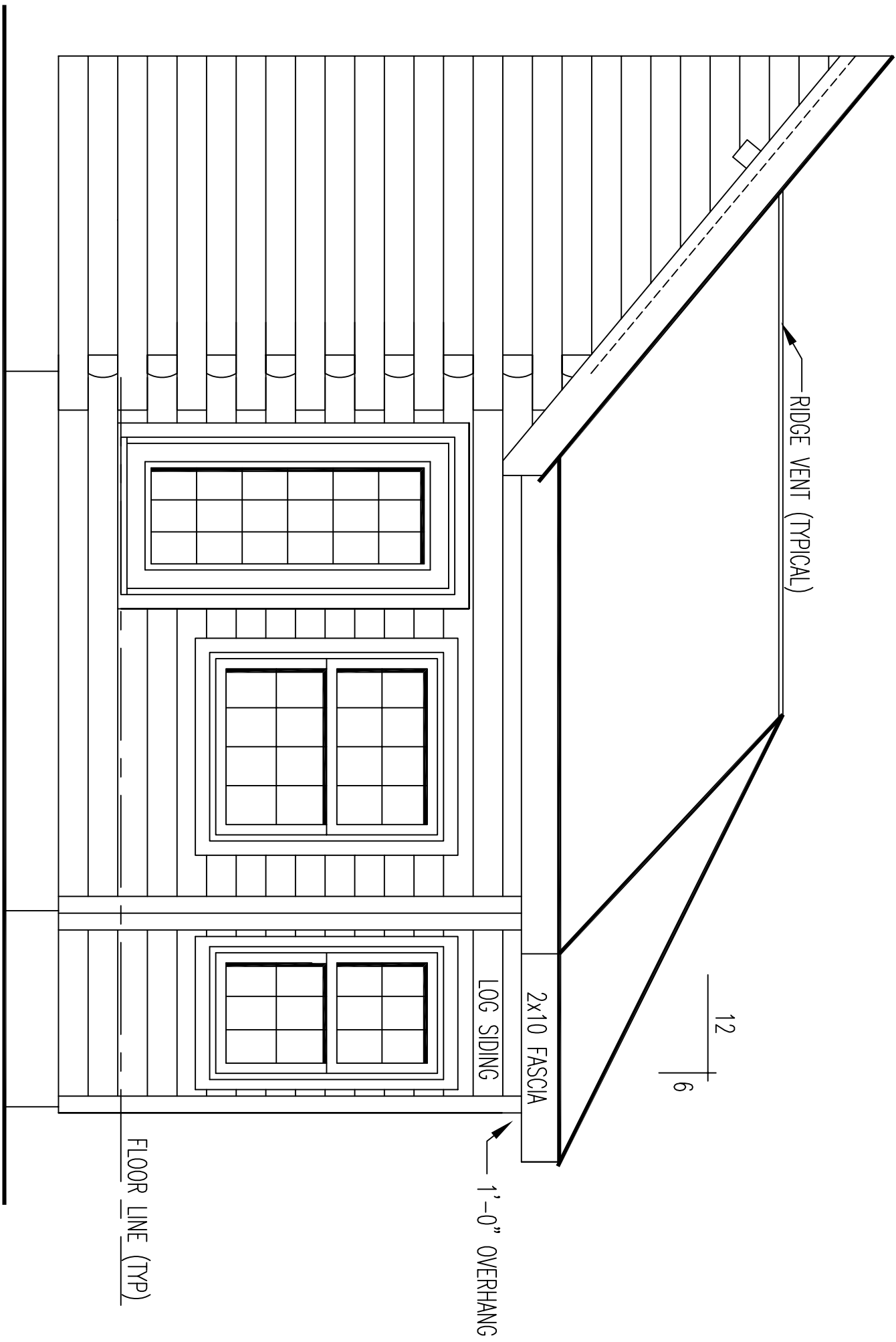
- 2 X 8 D WHITE PINE LOG SIDING.
- 14 LOG SIDING COURSES TO SQUARE.
- 2x6 STUD WALLS (STUDS AT 24" O.C.).
- 2x12 RAFTER ROOF SYSTEM (CATHEDRAL) WITH EXPOSED RAFTERS AND BEAMS.
- 2x10 FLOOR SYSTEM.

- 1 3 / 4" X 5 1 / 2" EXTERIOR TRIM MATERIAL SHOWN AT ALL DOORS AND WINDOWS.
- ALL OVERHANGS APPROX. 1'-0" .
- WINDOW GRILLE PATTERNS SHOWN ARE FOR ILLUSTRATION ONLY, ACTUAL PATTERNS MAY VARY.
- ROOF SYSTEM DESIGNED FOR 40 LB. SNOW LOAD.
- VERIFY GRADE ON SITE.

226 SQ. FT. FIRST FLOOR







← RIDGE VENT (TYPICAL)

12

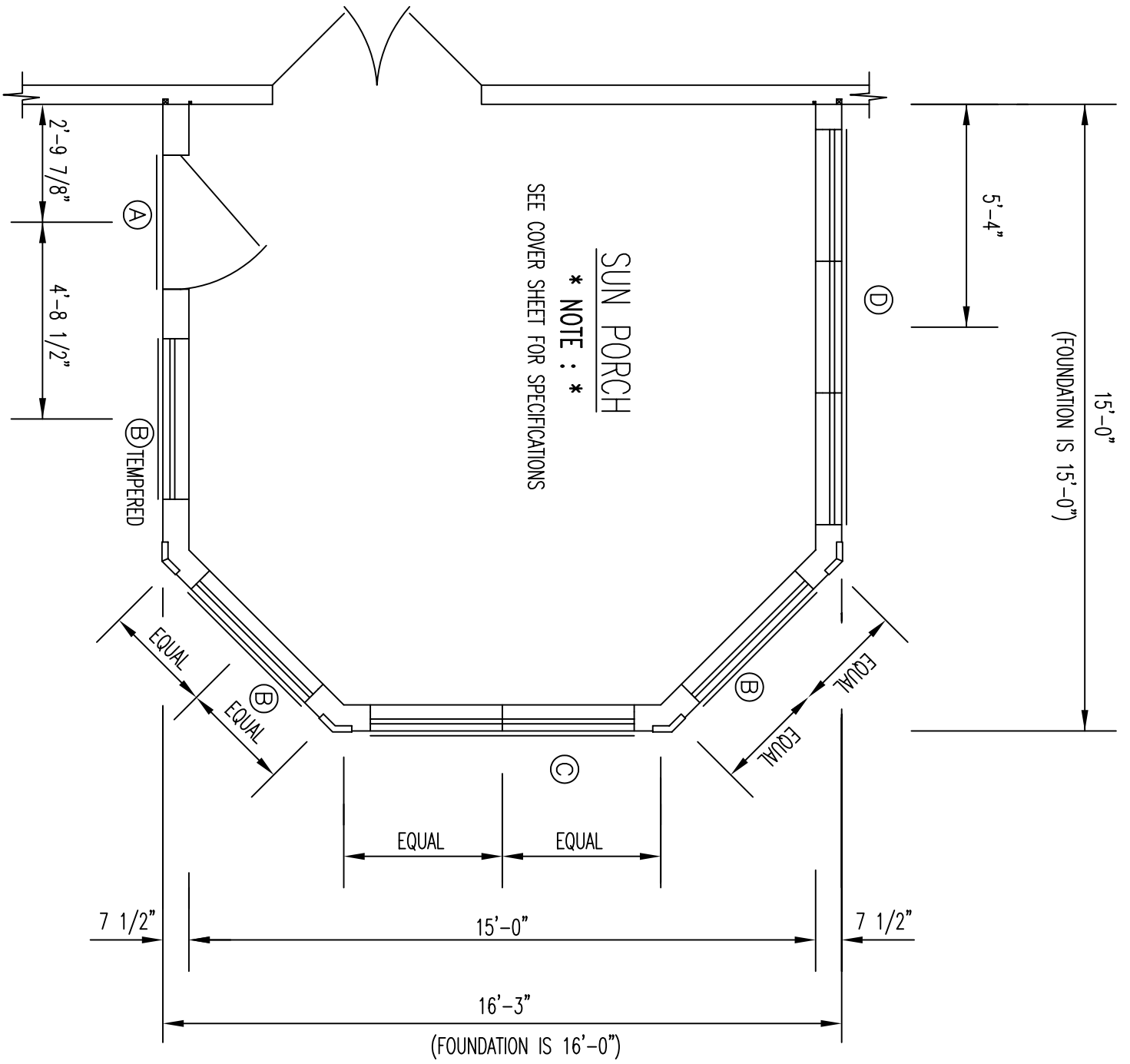
6

2x10 FASCIA

LOG SIDING

← 1'-0" OVERHANG

FLOOR LINE (TYP)



SUN PORCH
 * NOTE : *
 SEE COVER SHEET FOR SPECIFICATIONS

FLOOR AREA = 226 SQ. FT.