

STANDARD 12' X 12' SUN PORCH

FLOOR PLANS AND ELEVATIONS FOR 1998



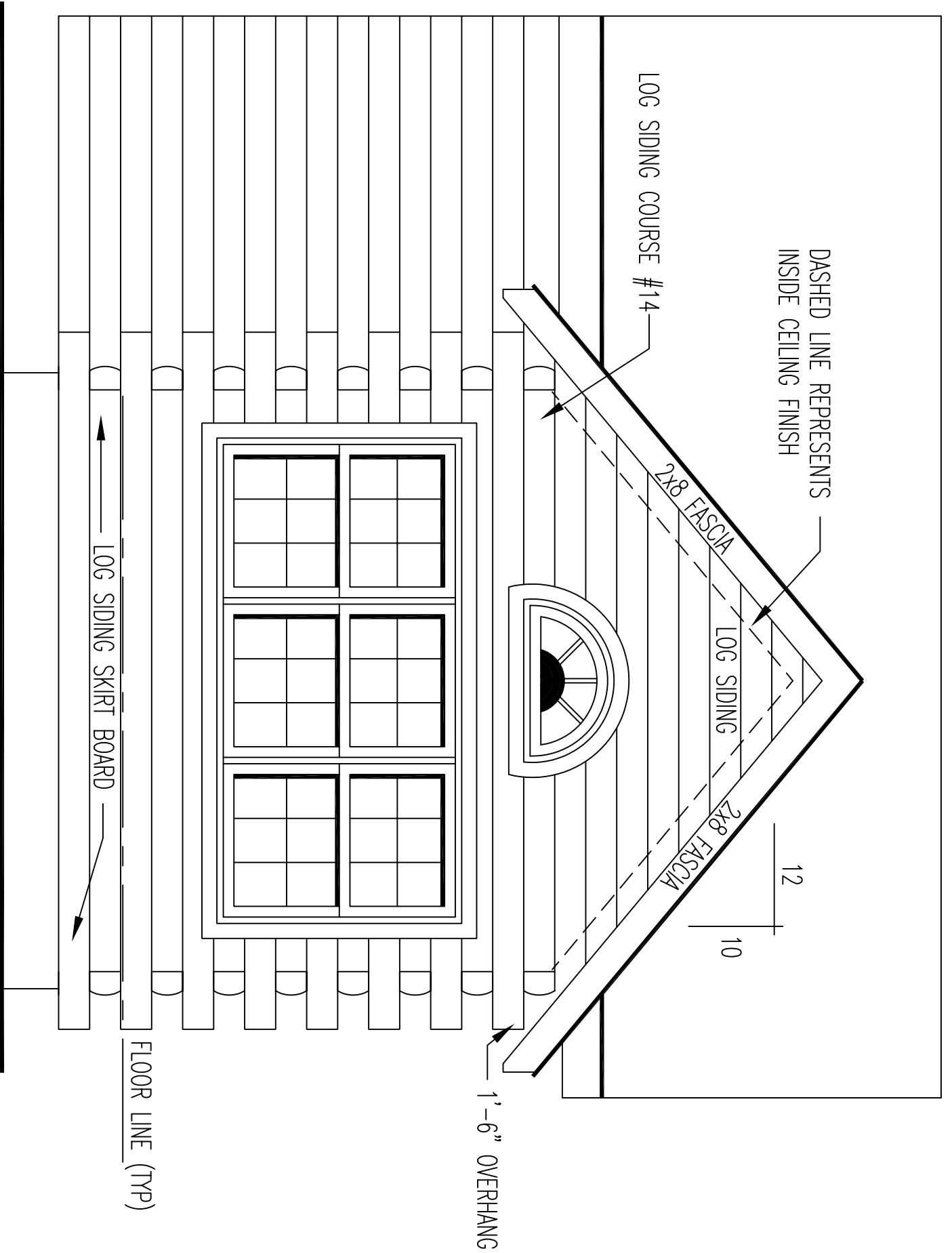
LOG SIDING PROFILE

** * GENERAL NOTES * *

- 2 X 8 D WHITE PINE LOG SIDING.
- 14 LOG SIDING COURSES TO SQUARE.
- 2x6 STUD WALLS (STUDS AT 24" O.C.).
- 2x12 RAFTER ROOF SYSTEM (CATHEDRAL) WITH EXPOSED RAFTERS AND BEAMS.
- 2x10 FLOOR SYSTEM.

- 1 3 / 4" X 5 1 / 2" EXTERIOR TRIM MATERIAL SHOWN AT ALL DOORS AND WINDOWS.
- ALL OVERHANGS APPROX. 1'-6" .
- WINDOW GRILLE PATTERNS SHOWN ARE FOR ILLUSTRATION ONLY, ACTUAL PATTERNS MAY VARY.
- ROOF SYSTEM DESIGNED FOR 40 LB. SNOW LOAD.
- VERIFY GRADE ON SITE.

144 SQ. FT. FIRST FLOOR



DASHED LINE REPRESENTS
INSIDE CEILING FINISH

LOG SIDING COURSE #14

2x8 FASCIA

LOG SIDING

2x8 FASCIA

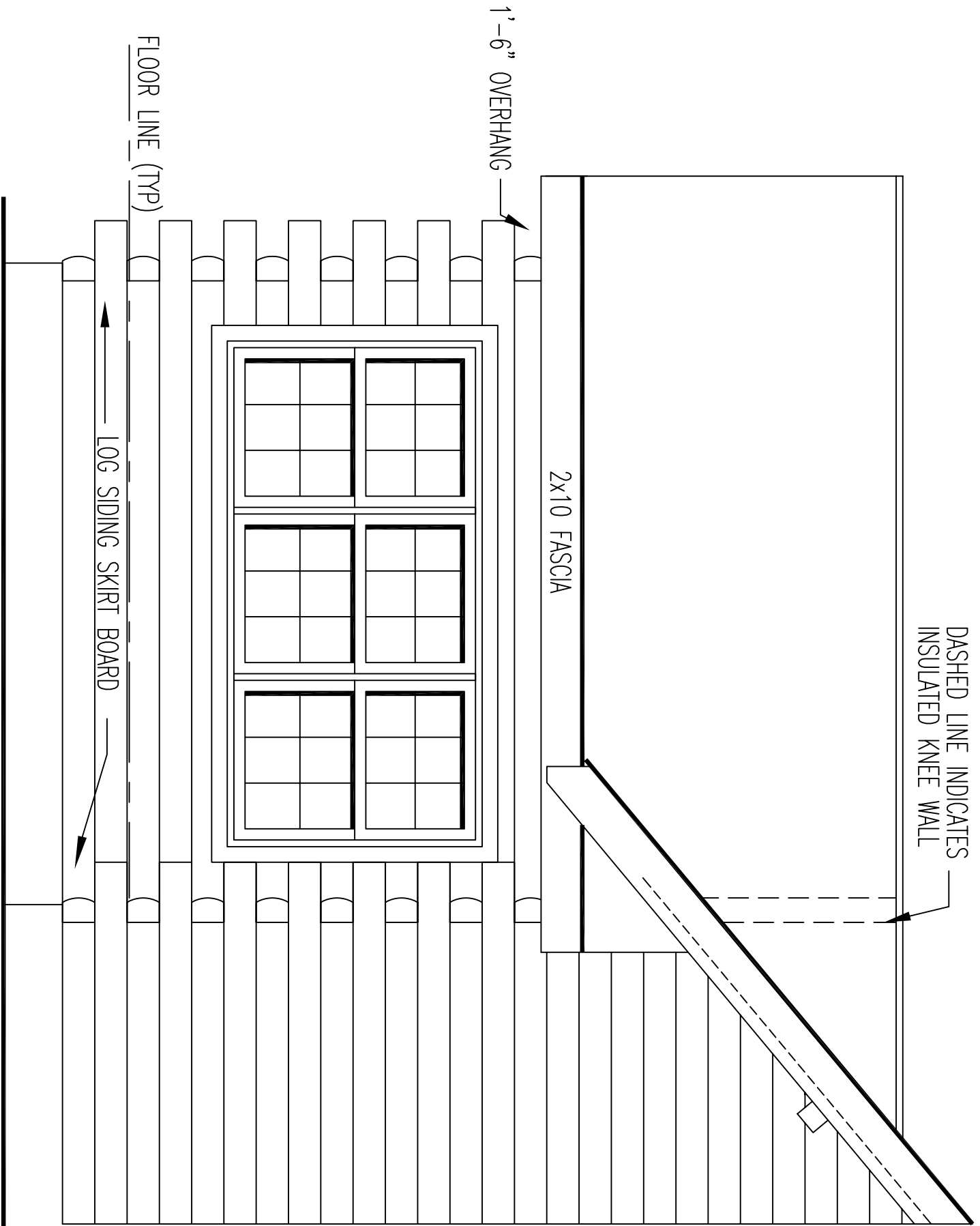
12

10

1'-6" OVERHANG

LOG SIDING SKIRT BOARD

FLOOR LINE (TYP)



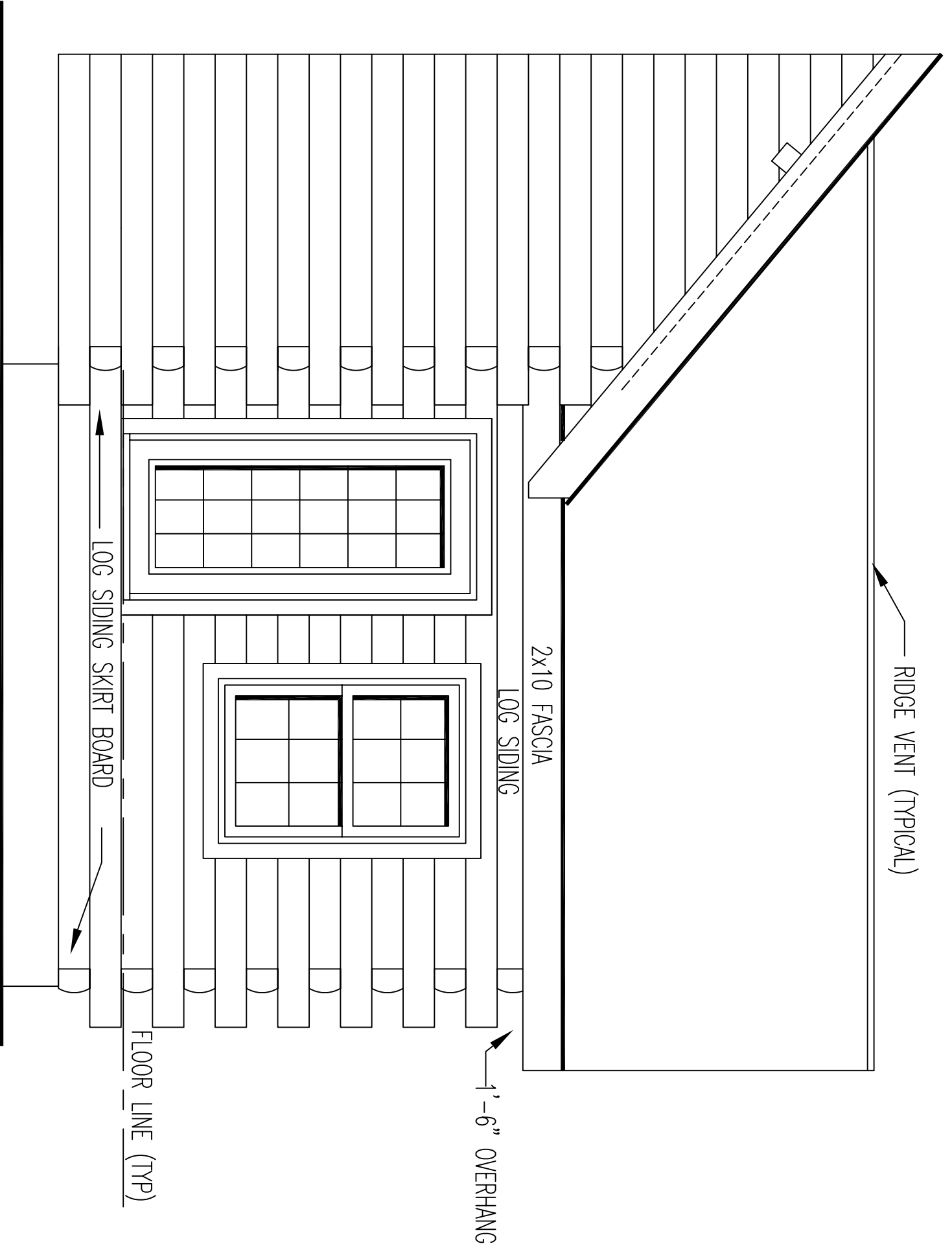
DASHED LINE INDICATES
INSULATED KNEE WALL

2x10 FASCIA

1'-6" OVERHANG

FLOOR LINE (TYP)

LOG SIDING SKIRT BOARD



RIDGE VENT (TYPICAL)

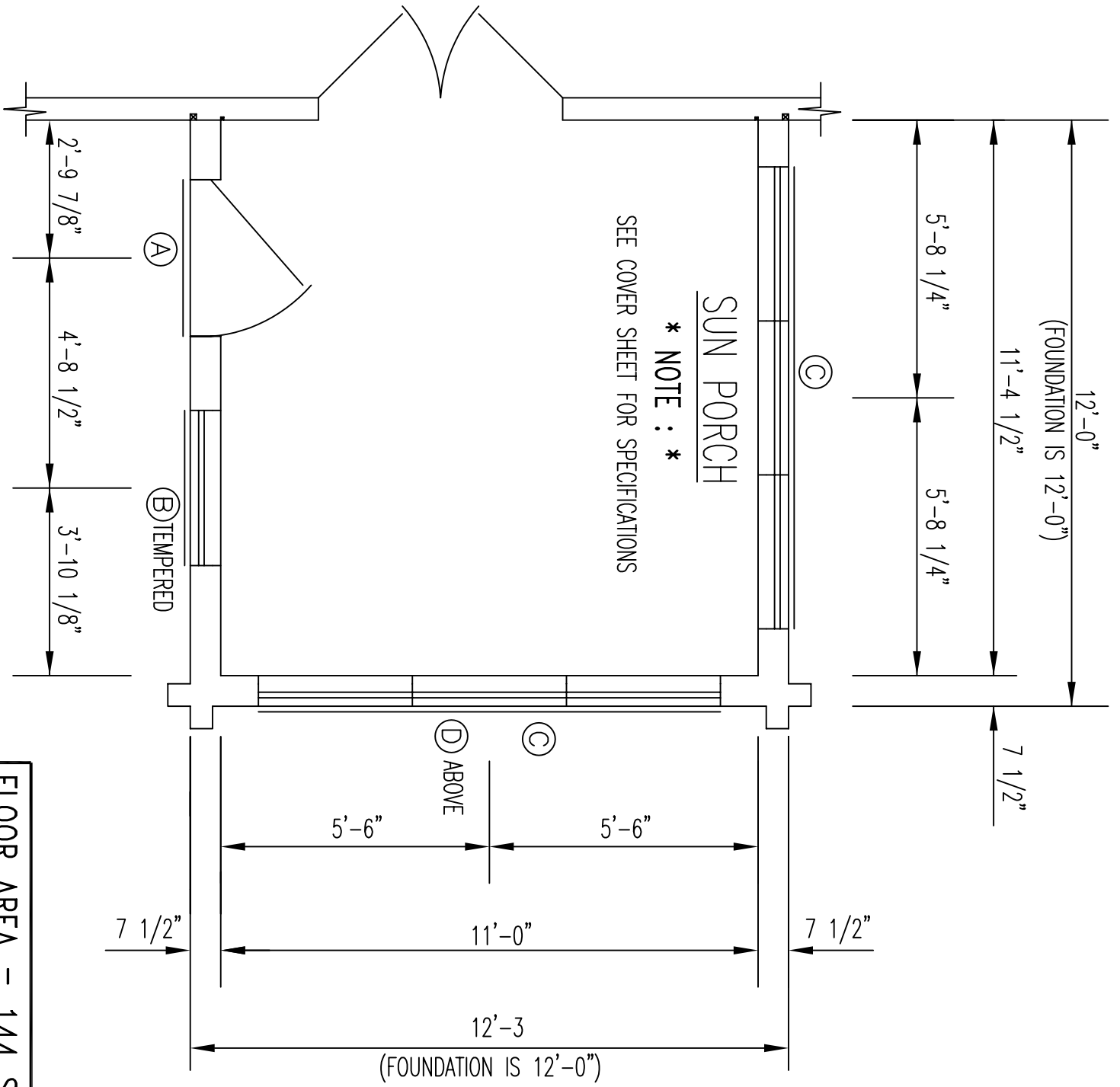
2x10 FASCIA

LOG SIDING

1'-6" OVERHANG

LOG SIDING SKIRT BOARD

FLOOR LINE (TYP)



FLOOR AREA = 144 SQ. FT.