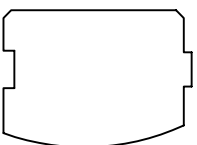


# DON SHELLLABARGER

## FLOOR PLANS AND ELEVATIONS



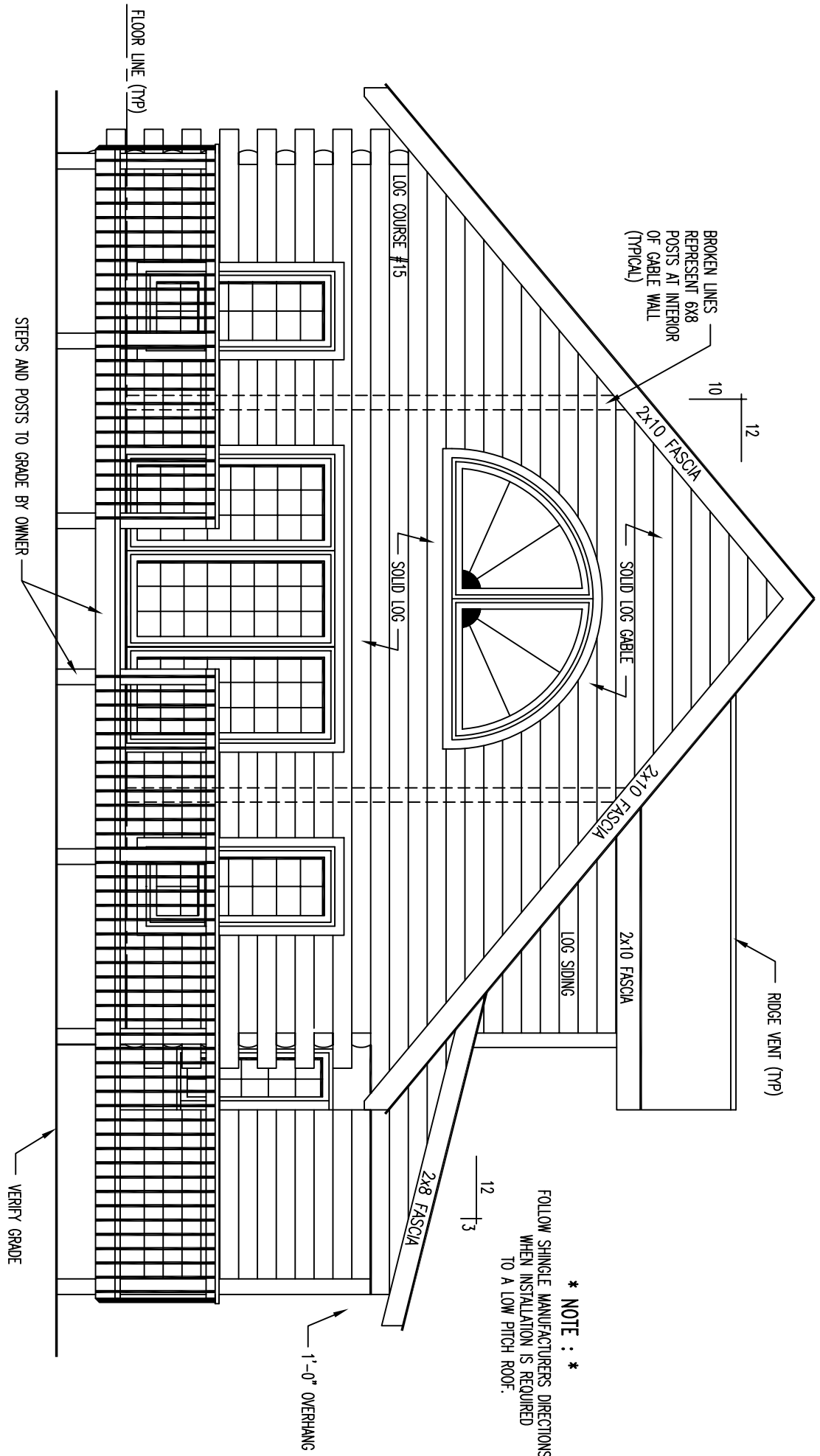
LOG PROFILE

### \*\* GENERAL NOTES \*\*

- 6 X 8 D SINGLE TONGUE WHITE PINE LOGS
- 15 LOG COURSES TO SQUARE - ENTIRE HOUSE
- 14 LOG COURSES TO SQUARE - SUNROOM
- 20 LOG SIDING COURSES TO SQUARE - GARAGE
- 27 LOG SIDING COURSES TO SQUARE - GABLE PORCHES
- ALL INTERIOR STUD WALLS TO BE 24" O.C. UNLESS NOTED.
- ALL EXTERIOR STUD WALLS TO BE 24" O.C. UNLESS NOTED.
- ALL PARTITION WALLS RUNNING TO THE TOP OF THE 14th LOG COURSE WILL REQUIRE A DOUBLE TOP AND BOTTOM PLATE.
- STEPS AND POSTS TO GRADE BY OWNER / OTHERS.

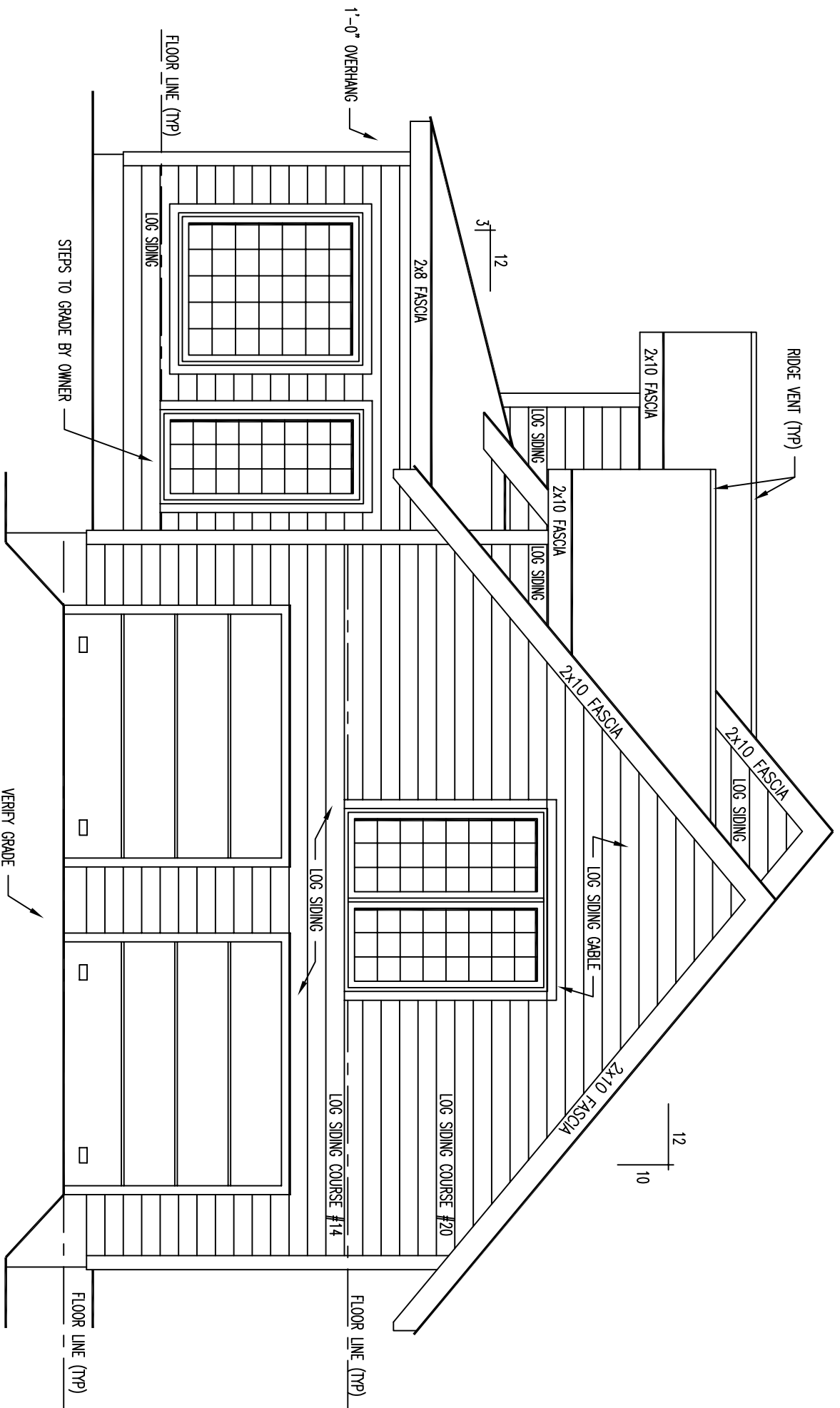
- 1 3/4" X 3 1/2" EXTERIOR TRIM MATERIAL SHOWN AT ALL DOORS AND WINDOWS UNLESS NOTED.
- ALL OVERHANGS APPROX. 2'-0" UNLESS NOTED.
- ROOF SYSTEM DESIGNED FOR 40 lb. SNOW LOAD.
- WINDOW GRILLE PATTERNS SHOWN ARE FOR ILLUSTRATION ONLY, ACTUAL PATTERNS MAY VARY.
- VERIFY GRADE ON SITE.
- NO LOG SIDING TO BE PROVIDED BELOW PORCH / DECK AREAS.

	1257 SQ. FT. FIRST FLOOR	304 SQ. FT. PORCH
567 SQ. FT. GARAGE	1162 SQ. FT. SECOND FLOOR	368 SQ. FT. DECK

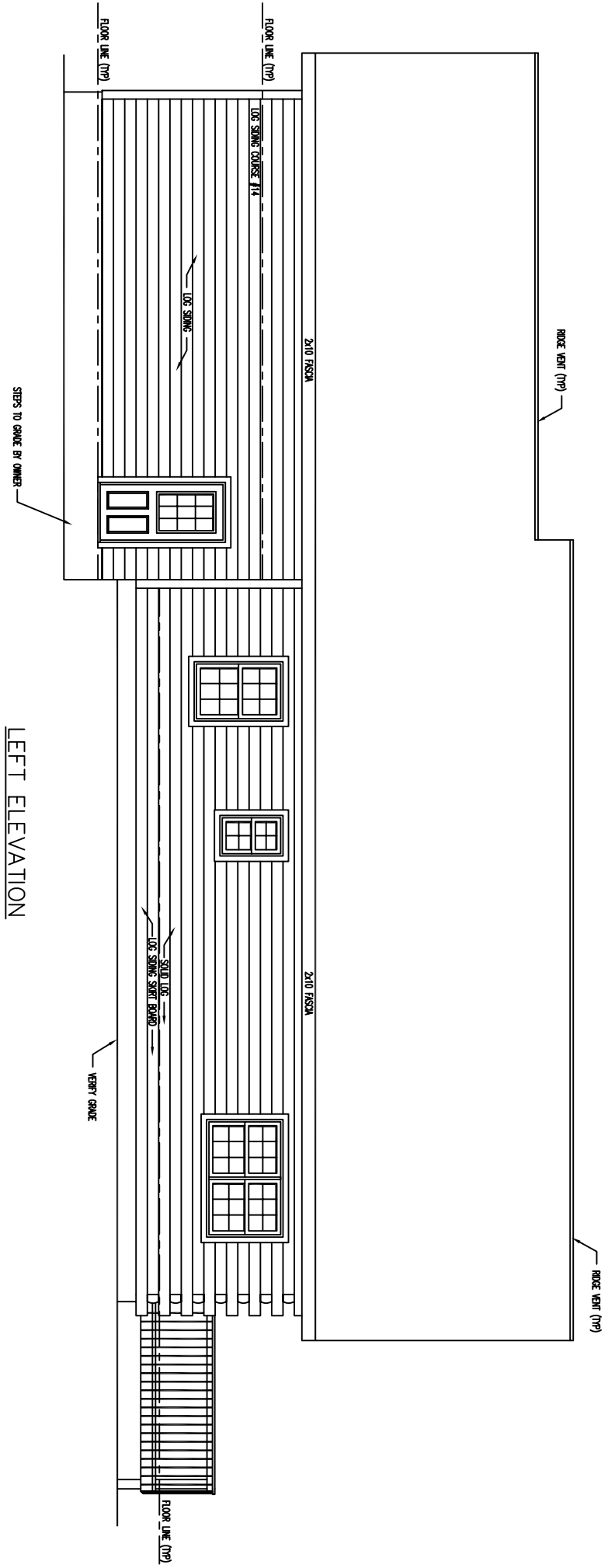


FRONT ELEVATION

\* NOTE : \*  
 FOLLOW SHINGLE MANUFACTURERS DIRECTIONS  
 WHEN INSTALLATION IS REQUIRED  
 TO A LOW PITCH ROOF.



REAR ELEVATION



LEFT ELEVATION

