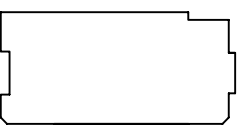


STANDARD KITTANNING

FLOOR PLANS AND ELEVATIONS FOR 1998

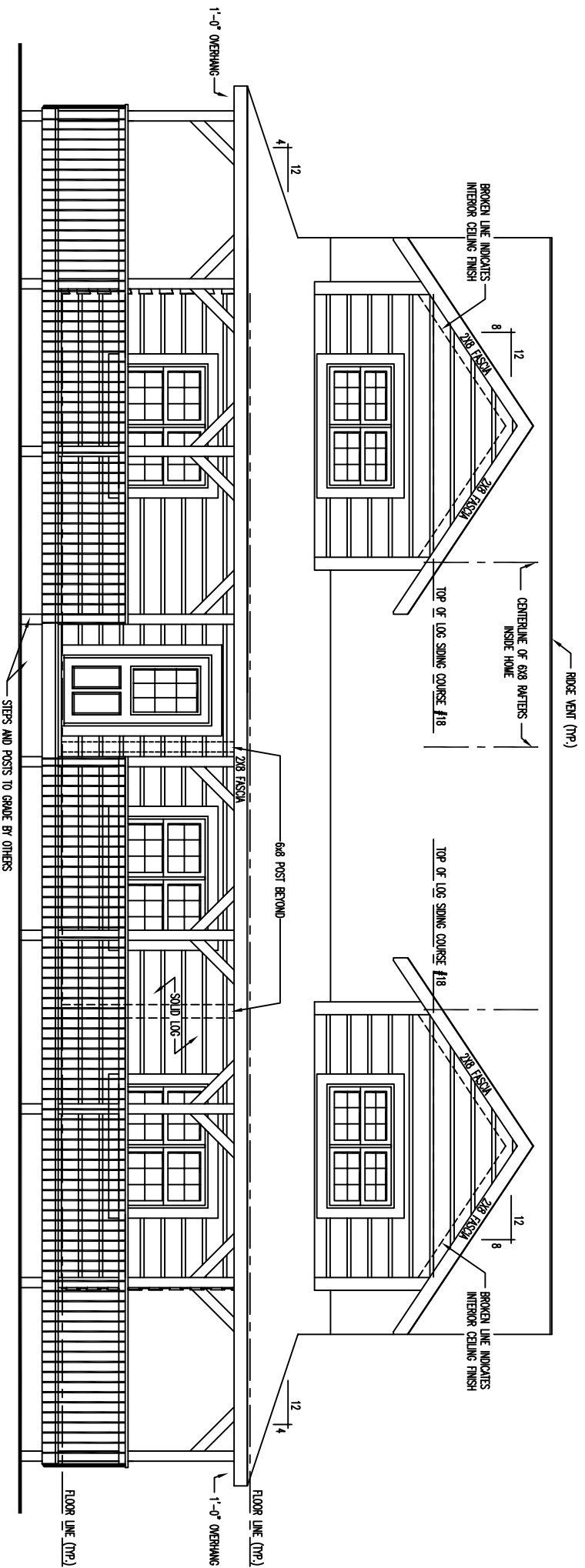


LOG PROFILE

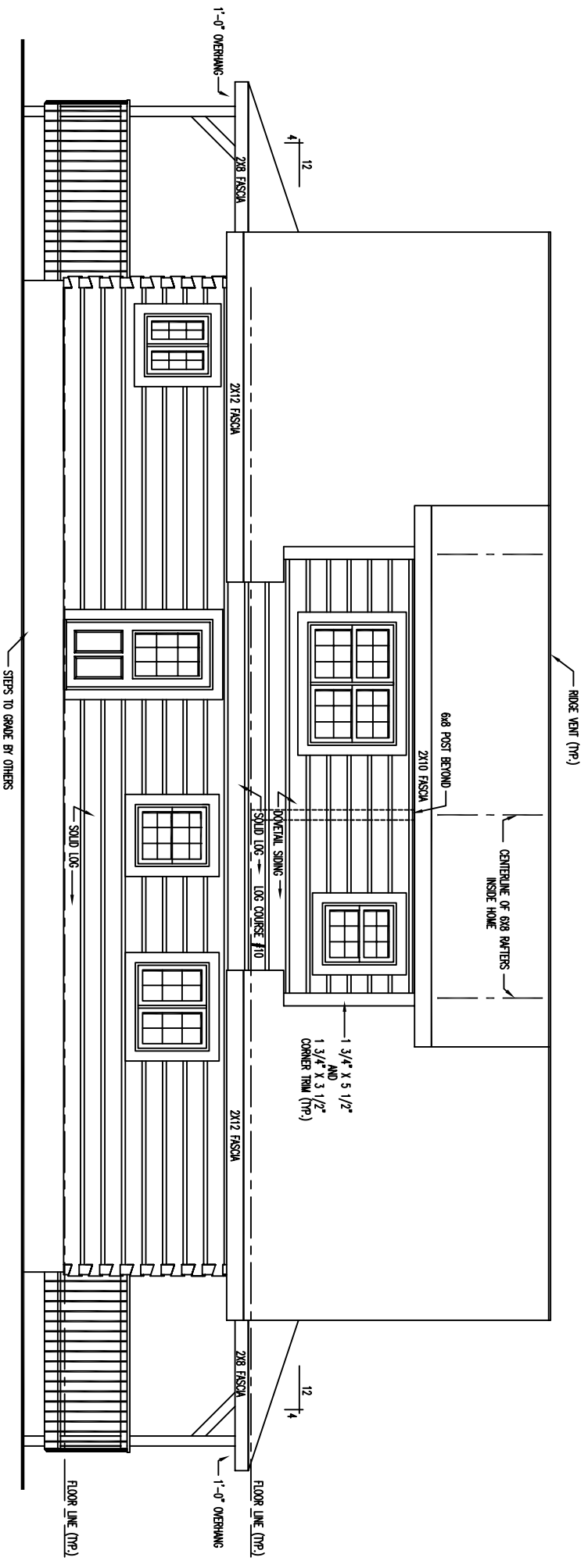
** * GENERAL NOTES * *

- 6 X 12 SINGLE TONGUE, WHITE PINE, DOVETAIL (UNCHINKED) LOGS
- 10 LOG COURSES TO SQUARE - AT ENTIRE HOUSE,
- 18 LOG SIDING COURSES TO SQUARE - AT DORMER AREAS,
- ALL INTERIOR STUD WALLS TO BE 24" O.C. UNLESS NOTED,
- 2nd FLOOR JOISTS LOCATED IN 9th LOG COURSE,
- STEPS AND POSTS TO GRADE BY OWNER / OTHERS,
- NO LOG SIDING TO BE PROVIDED BELOW PORCH / DECK AREAS,
- 1 3/4" X 5 1/2" EXTERIOR TRIM MATERIAL SHOWN AT ALL DOORS AND WINDOWS UNLESS NOTED,
- ALL OVERHANGS APPROX. 2'-0" UNLESS NOTED,
- ROOF SYSTEM DESIGNED FOR 40 lb. SNOW LOAD,
- WINDOW GRILLE PATTERNS SHOWN ARE FOR ILLUSTRATION ONLY, ACTUAL PATTERNS MAY VARY,
- VERIFY GRADE ON SITE,

1179 SQ. FT. FIRST FLOOR	787 SQ. FT. PORCH
919 SQ. FT. SECOND FLOOR	



FRONT ELEVATION



REAR ELEVATION

STEPS TO GRADE BY OTHERS

FLOOR LINE (TRP.)

FLOOR LINE (TRP.)

ROOF VEIN (TRP.)

CENTERLINE OF 6x8 RAFTERS
INSIDE HOME

6x8 POST BEYOND
2x10 FASCIA

1-3/4" X 5 1/2"
AND
1-3/4" X 3 1/2"
CORNER TRIM (TRP.)

1-0" OVERHANG

2x8 FASCIA

2x12 FASCIA

LOG COURSE #10

2x12 FASCIA

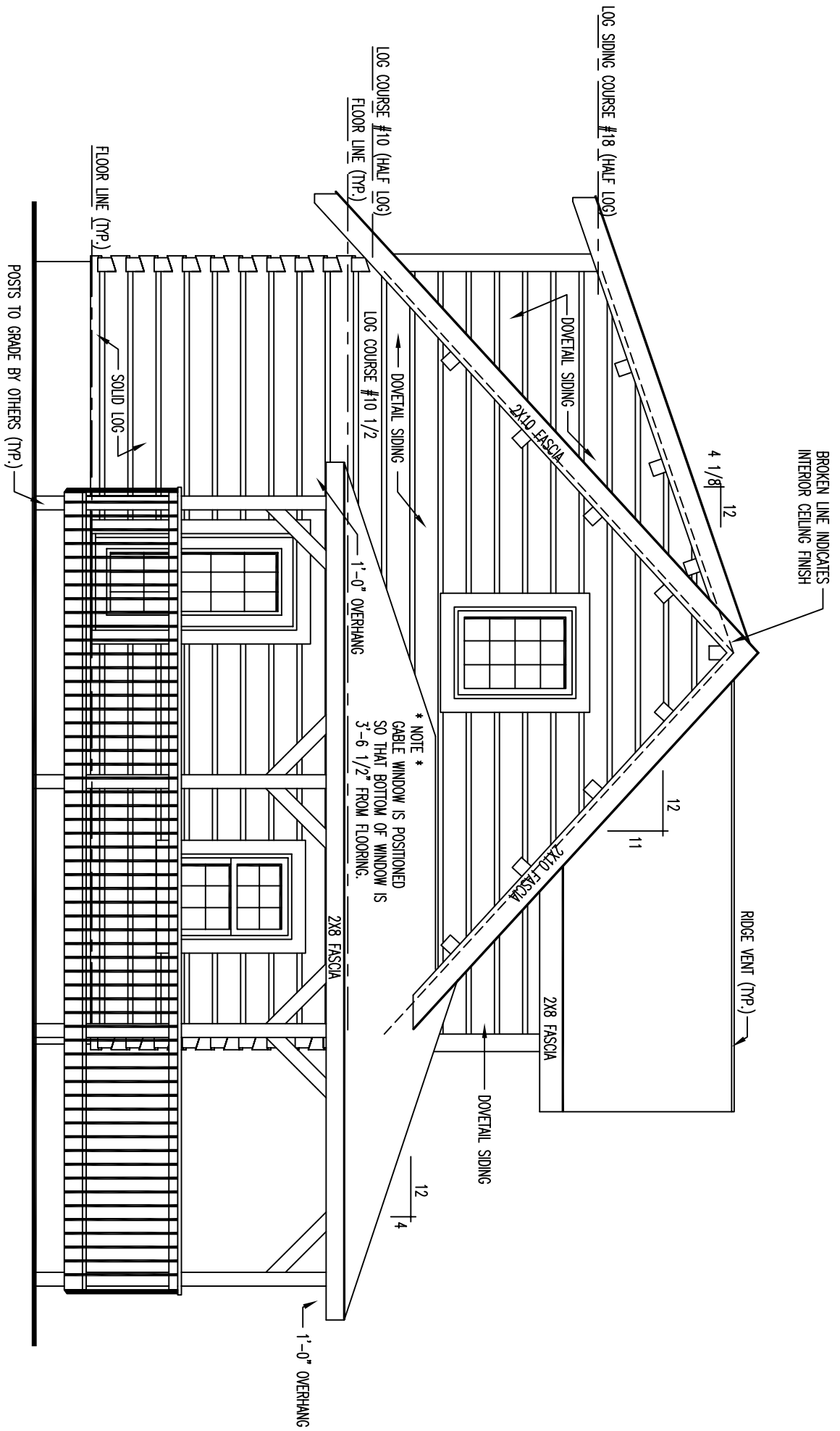
2x8 FASCIA

1-0" OVERHANG

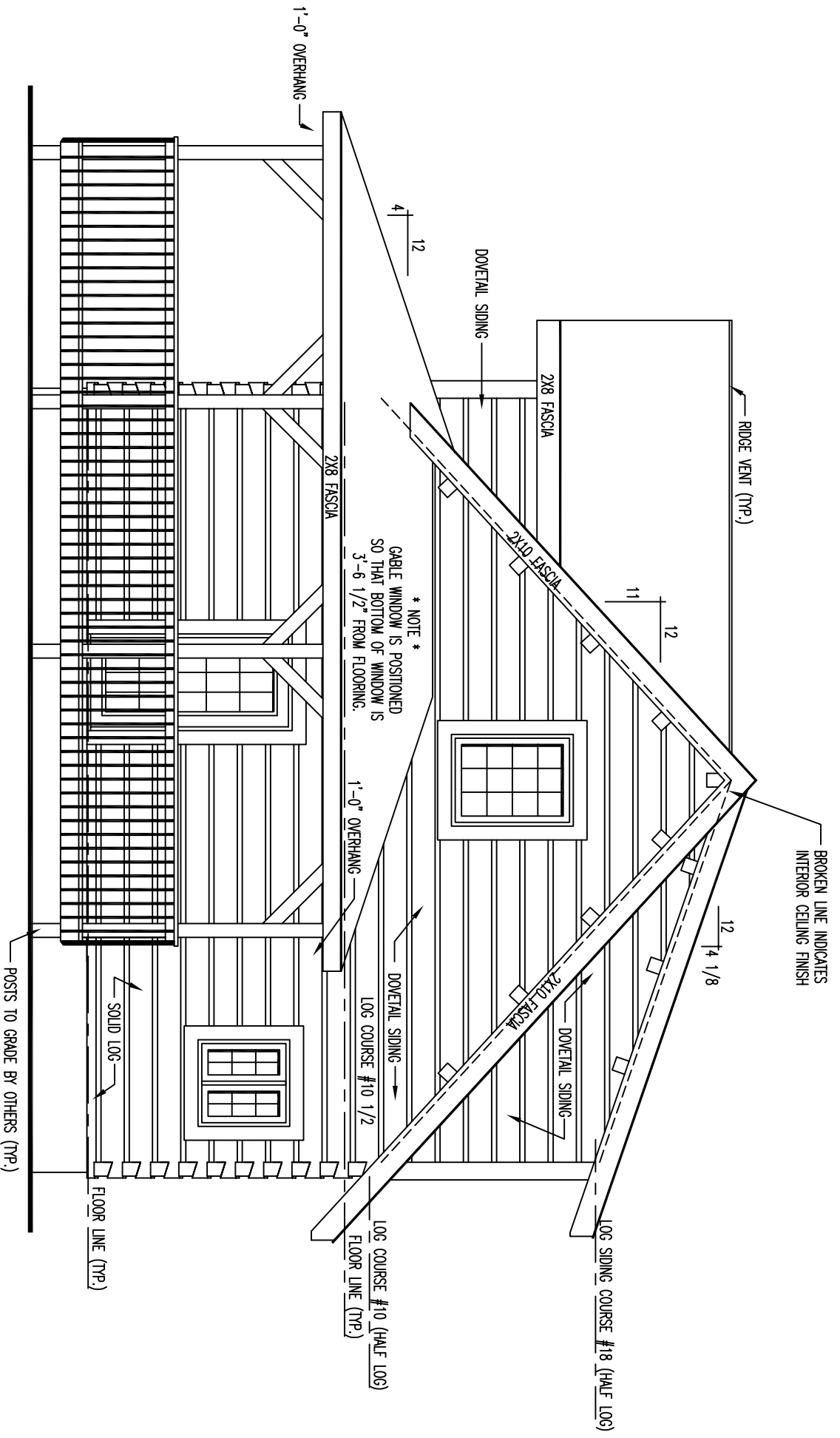
SOLID LOG

4
12

12
4

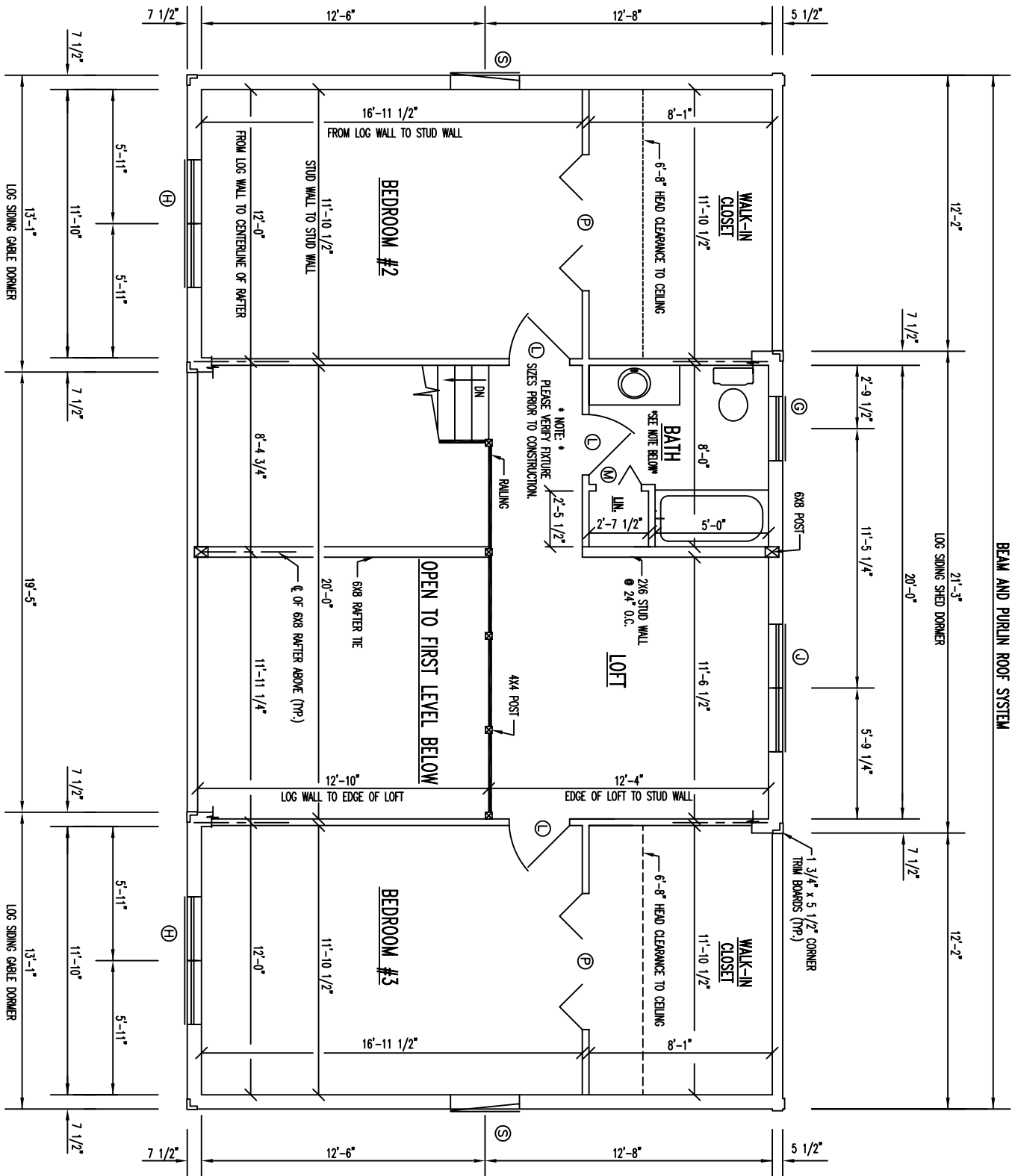


LEFT ELEVATION



RIGHT ELEVATION

BEAM AND PURLIN ROOF SYSTEM



FLOOR PLAN 2nd LEVEL

FLOOR AREA = 919 SQ. FT.