

STANDARD HIGHLAND

FLOOR PLANS AND ELEVATIONS FOR 1998

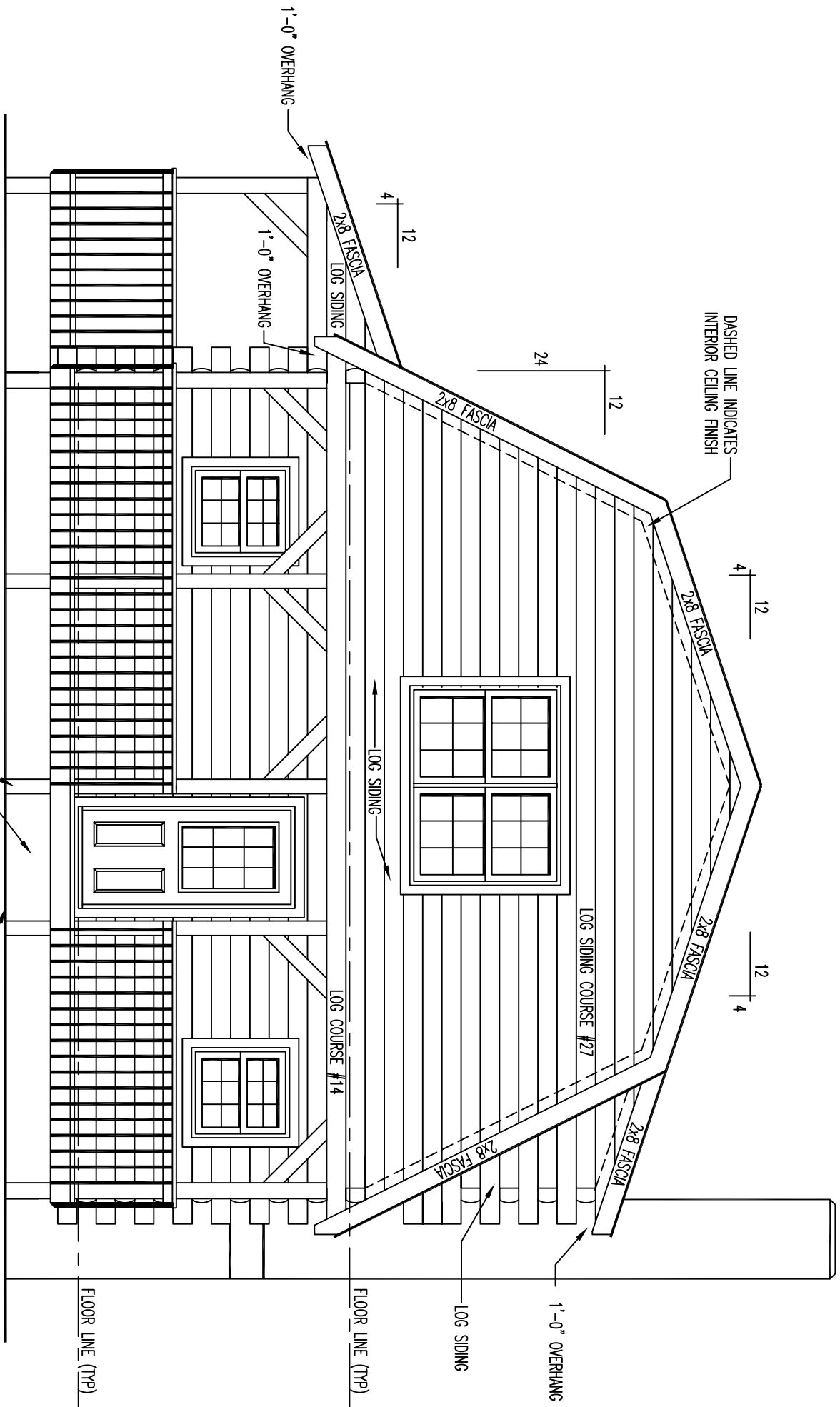


LOG PROFILE

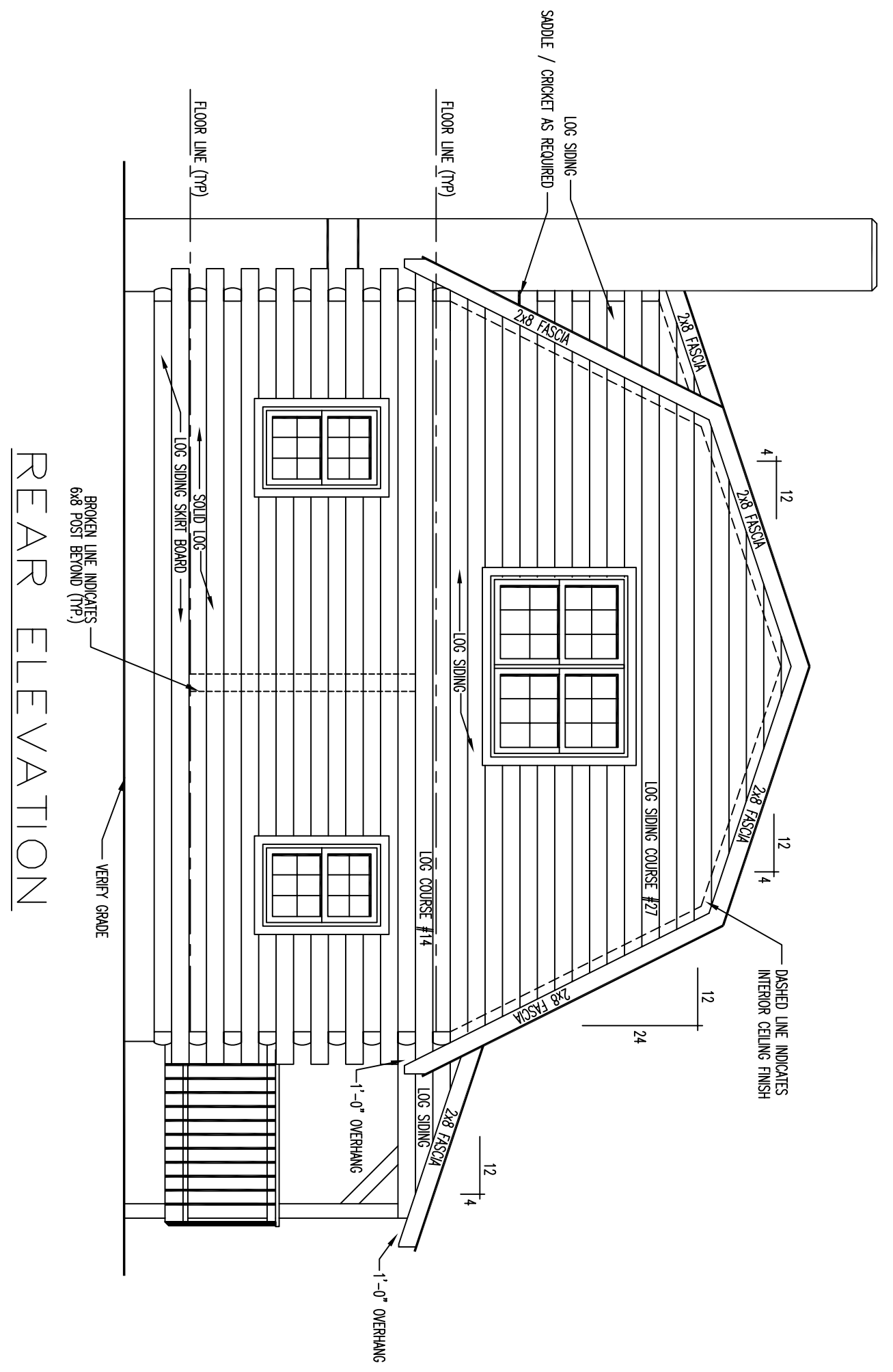
** * GENERAL NOTES * *

- 6 X 8 D SINGLE TONGUE WHITE PINE LOGS.
- 15 LOG COURSES TO SQUARE - AT ENTIRE HOUSE.
- 27 LOG SIPING COURSES TO SQUARE - AT DORMER AREA.
- ALL INTERIOR STUD WALLS TO BE 24" O.C. UNLESS NOTED.
- 2nd FLOOR JOISTS LOCATED IN 14th LOG COURSE.
- ALL PARTITION WALLS RUNNING TO THE TOP OF THE 14th LOG COURSE WILL REQUIRE A DOUBLE TOP AND BOTTOM PLATE.
- STEPS AND POSTS TO GRADE BY OWNER / OTHERS.
- 1 3/4" X 3 1/2" EXTERIOR TRIM MATERIAL SHOWN AT ALL DOORS AND WINDOWS UNLESS NOTED.
- ALL OVERHANGS APPROX. 2'-0" UNLESS NOTED.
- ROOF SYSTEM DESIGNED FOR 40 LB. SNOW LOAD.
- WINDOW GRILLE PATTERNS SHOWN ARE FOR ILLUSTRATION ONLY, ACTUAL PATTERNS MAY VARY.
- VERIFY GRADE ON SITE.
- NO LOG SIPING TO BE PROVIDED BELOW PORCH AREA.

624 SQ. FT. FIRST FLOOR	256 SQ. FT. PORCH
761 SQ. FT. SECOND FLOOR	



FRONT ELEVATION



REAR ELEVATION

BROKEN LINE INDICATES
6x8 POST BEYOND (TYP.)

VERIFY GRADE

SOLID LOG
LOG SIDING SKIRT BOARD

FLOOR LINE (TYP)

FLOOR LINE (TYP)

LOG COURSE #14

LOG SIDING COURSE #27

1'-0" OVERHANG

1'-0" OVERHANG

LOG SIDING
SADDLE / CRICKET AS REQUIRED

DASHED LINE INDICATES
INTERIOR CEILING FINISH

12
4

12
4

12

24

12
4

2x8 FASCIA

2x8 FASCIA

2x8 FASCIA

2x8 FASCIA

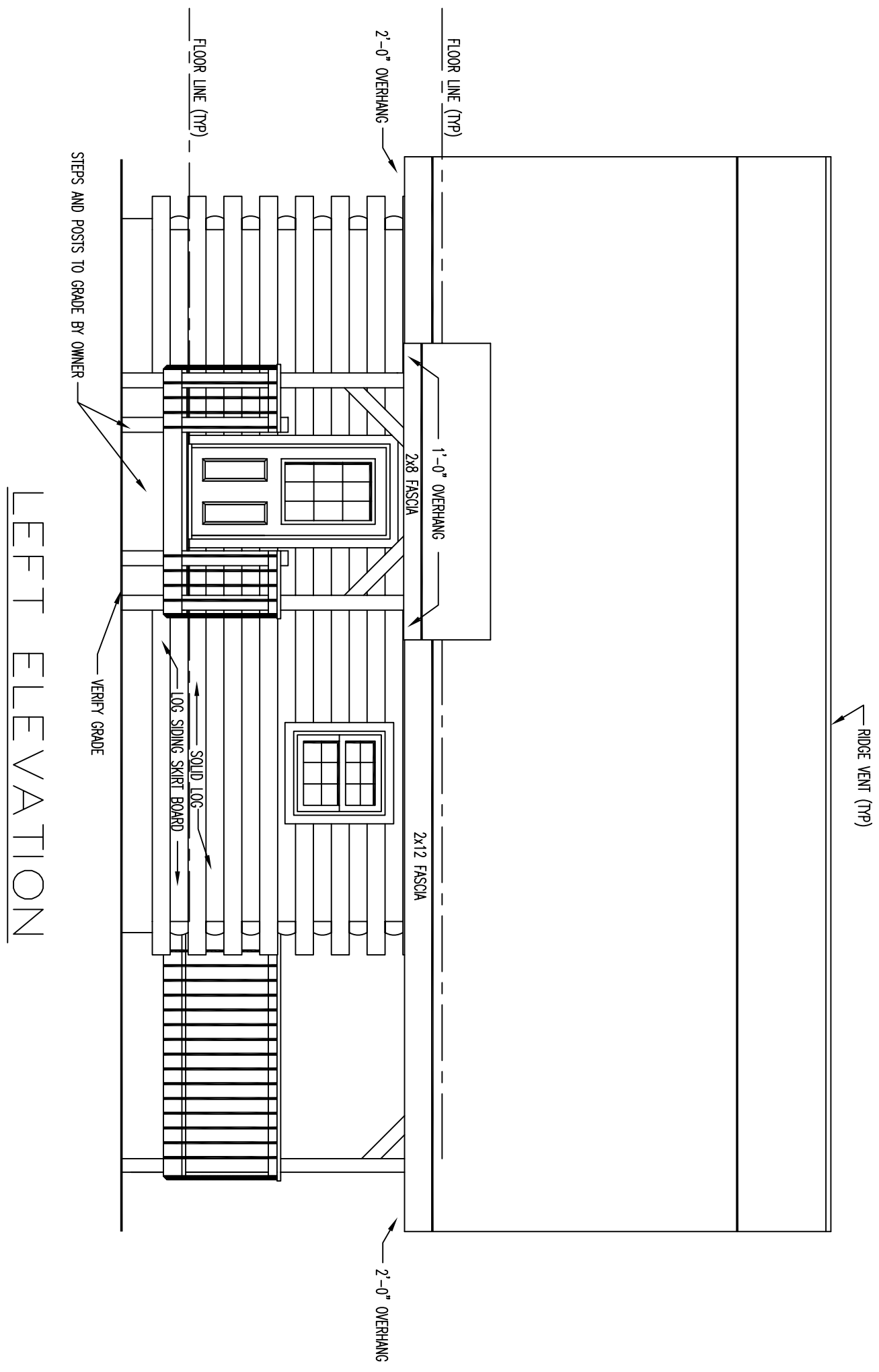
2x8 FASCIA

2x8 FASCIA

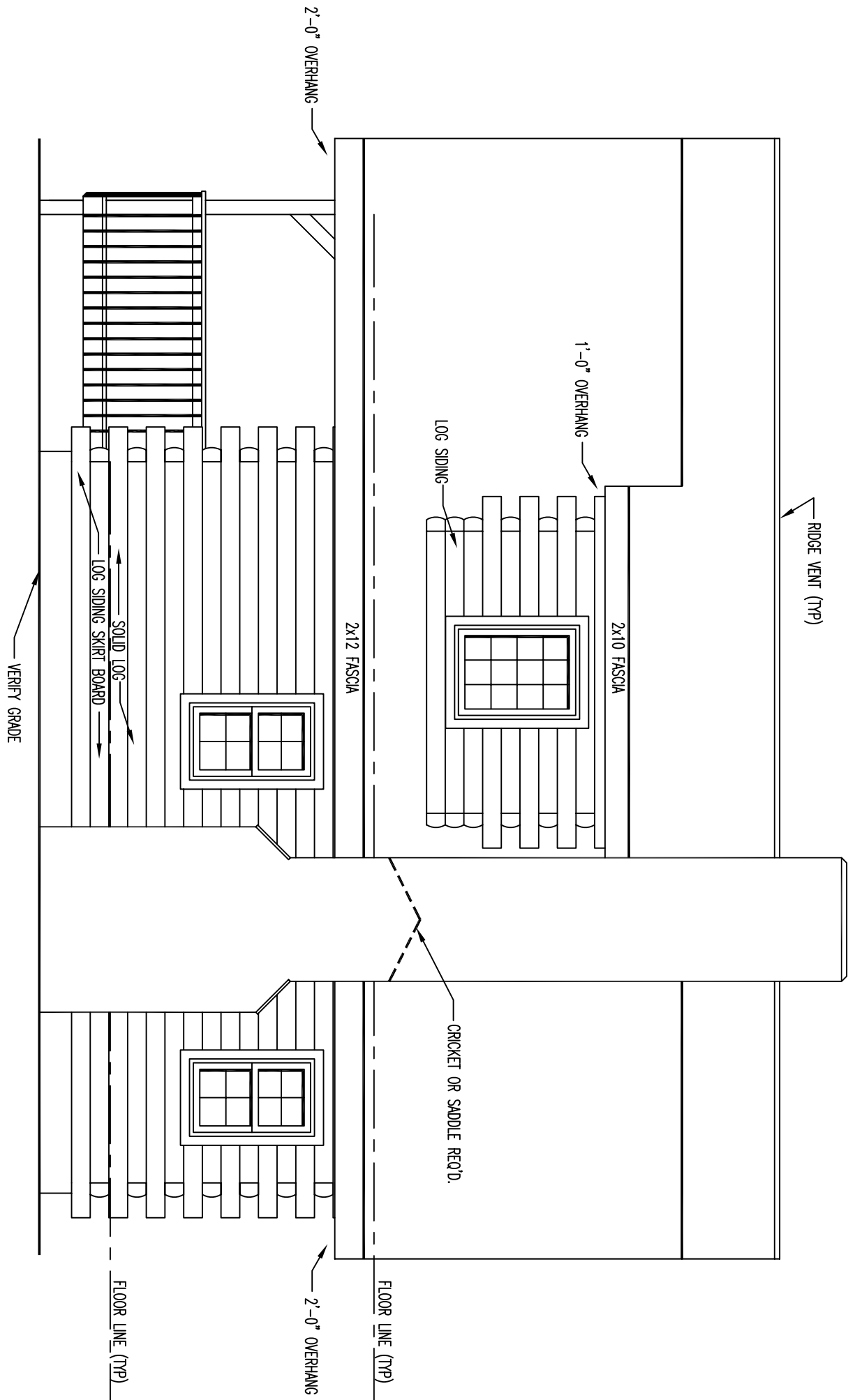
LOG SIDING

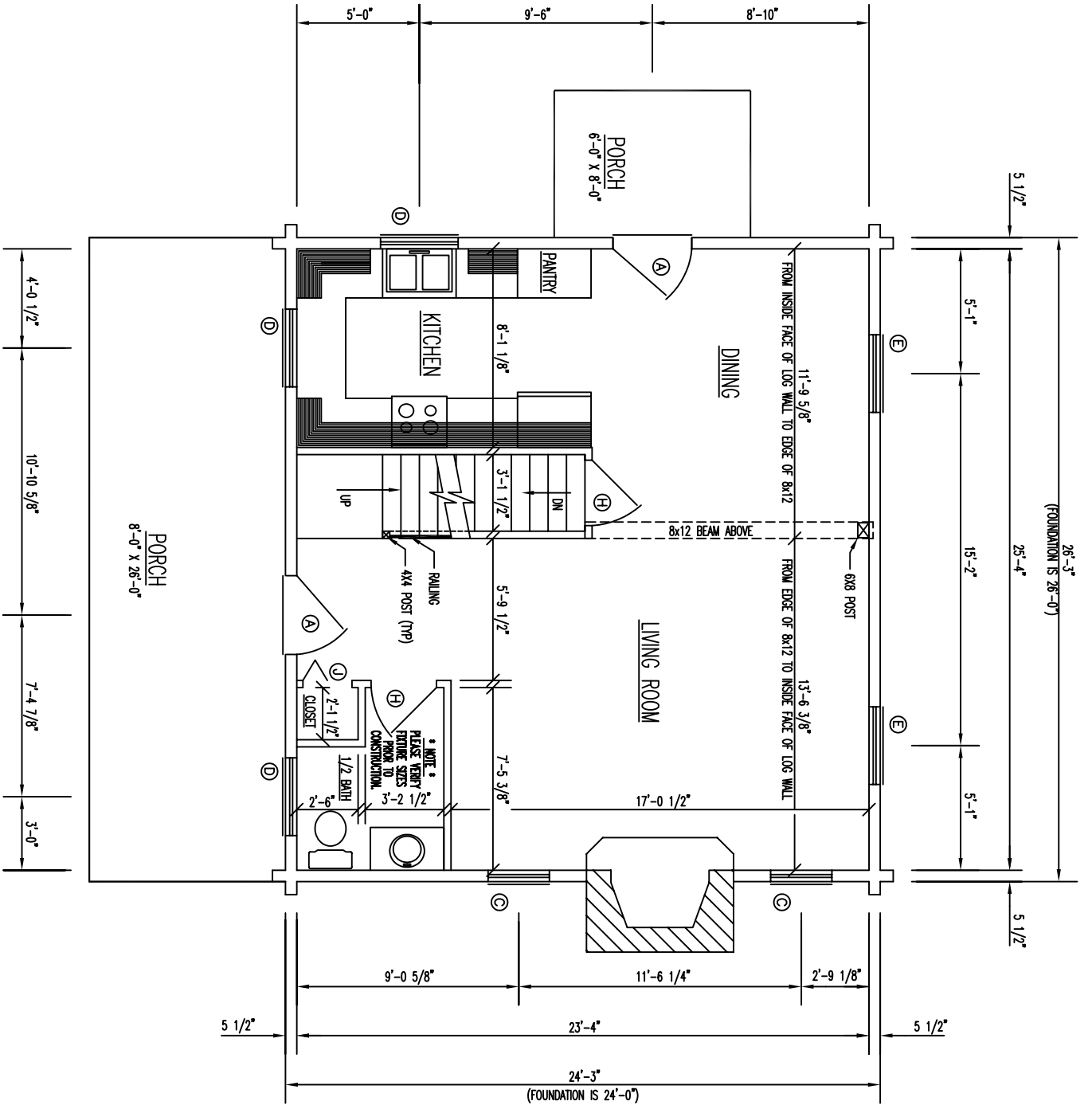
LOG SIDING

LOG SIDING



RIGHT ELEVATION





FLOOR PLAN 1st LEVEL

FLOOR AREA = 624 SQ. FT.

FLOOR PLAN 2nd LEVEL

FLOOR AREA = 761 SQ. FT.

