

RICK HICKMAN

FLOOR PLANS AND ELEVATIONS



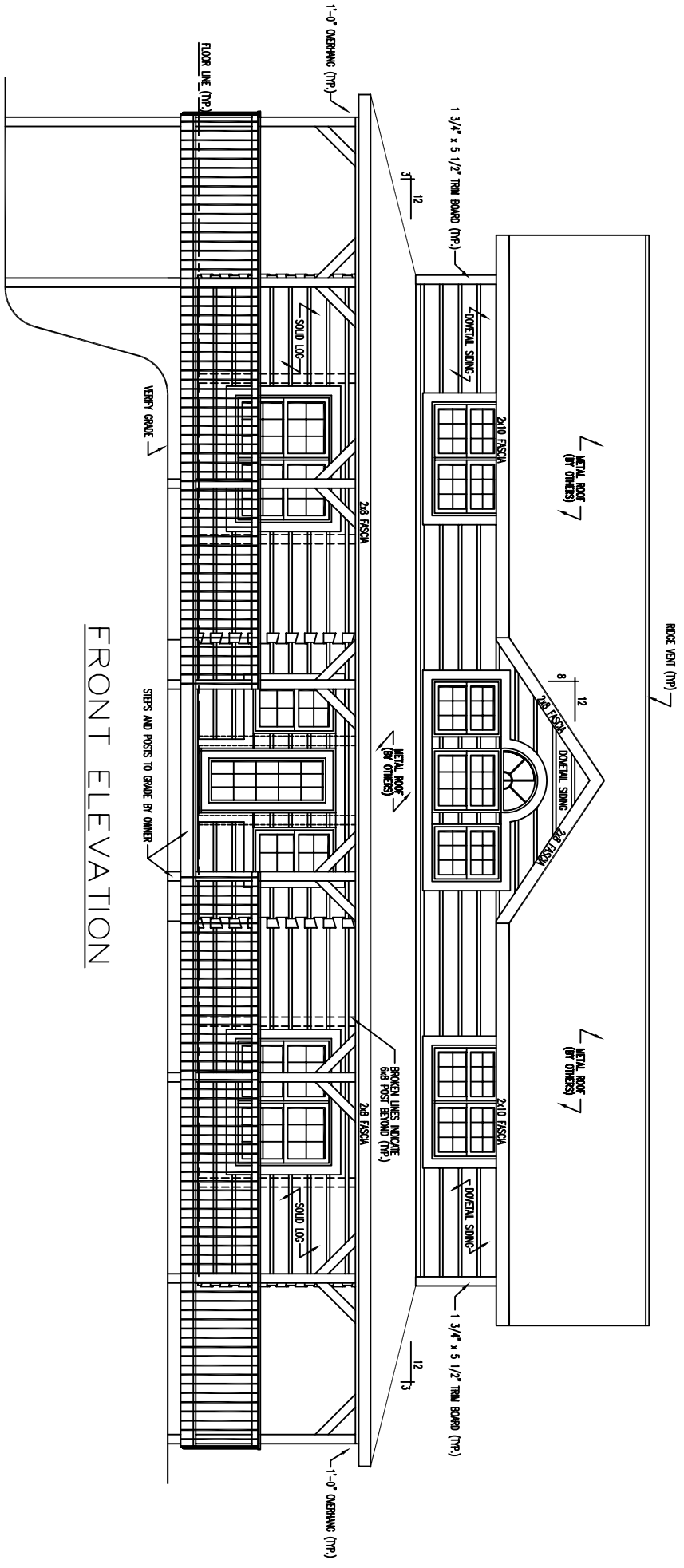
LOG PROFILE

** GENERAL NOTES **

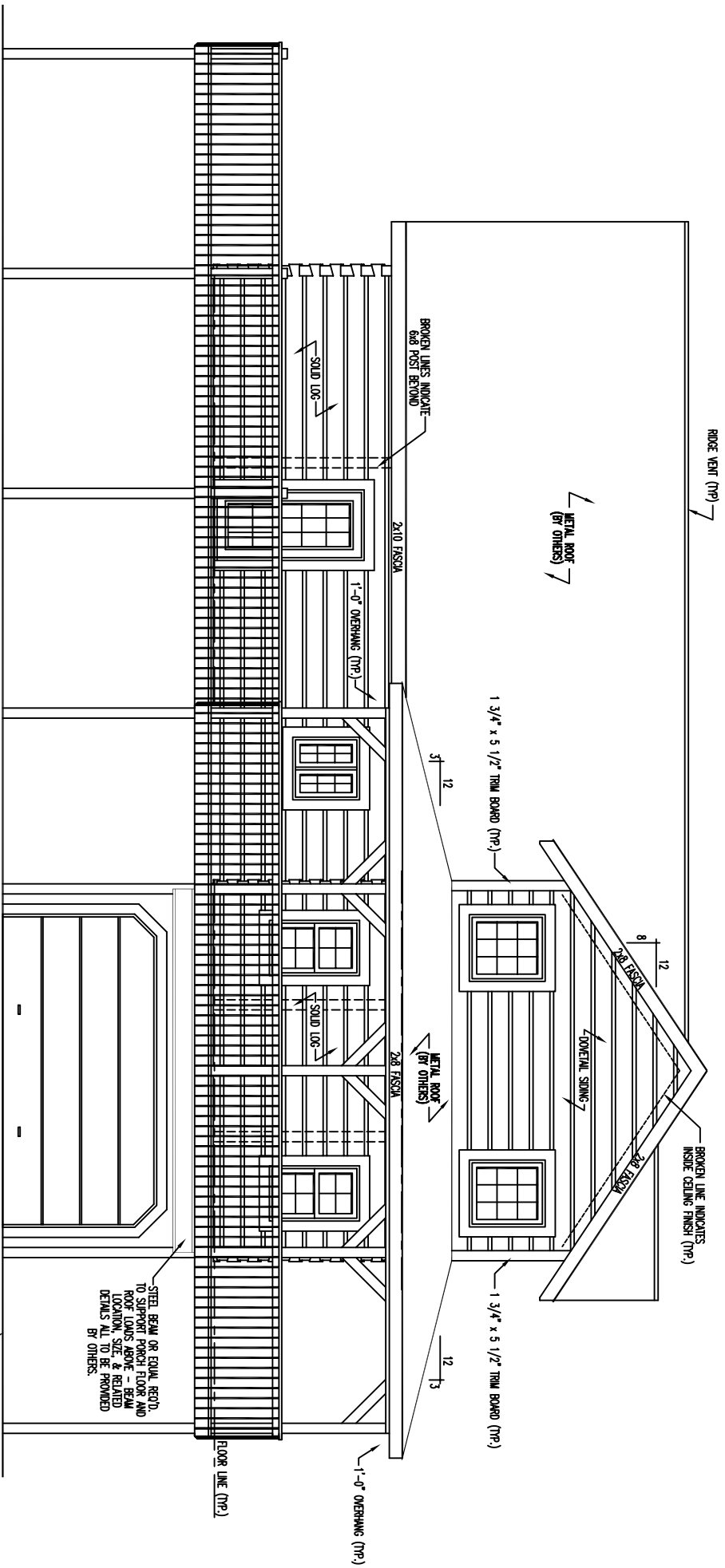
- 6x12 SINGLE NOTCH WHITE PINE DOVETAIL LOGS
- 18 LOG/ SIPING COURSES TO SQUARE - AT WING AREAS,
- 10 LOG COURSES TO SQUARE - AT CENTER/ CATHEDRAL AREA,
- 18 LOG SIPING COURSES TO SQUARE - AT DORMER AREA,
- ALL INTERIOR STUD WALLS TO BE 24" O.C. UNLESS NOTED,
- 2nd FLOOR JOISTS LOCATED IN 9th LOG COURSE,
- ALL PARTITION WALLS RUNNING TO THE TOP OF THE 9th LOG COURSE WILL REQUIRE A DOUBLE TOP AND BOTTOM PLATE,

- STEPS AND POSTS TO GRADE ARE BY OWNER / OTHERS,
- 1 3/4" X 5 1/2" EXTERIOR TRIM MATERIAL SHOWN AT ALL DOORS AND WINDOW UNLESS NOTED,
- EXTERIOR TRIM AT ARCH OF CIRCLE TOP IS 2x10 MATERIAL,
- ALL OVERHANGS APPROX. 2'-0" UNLESS NOTED,
- ROOF SYSTEM DESIGNED FOR 40lb. SNOW LOAD,
- WINDOW GRILLE PATTERNS SHOWN ARE FOR ILLUSTRATION ONLY, ACTUAL PATTERNS MAY VARY,
- VERIFY GRADE ON SITE,

1,726 SQ. FT. FIRST FLOOR	1,052 SQ. FT. PORCH
1,064 SQ. FT. SECOND FLOOR	660 SQ. FT. DECK



FRONT ELEVATION



LEFT ELEVATION

STEEL BEAM OR EQUAL REQ'D.
TO SUPPORT FINISH FLOOR AND
ROOFING ABOVE. BEAM
LOADING TO BE PROVIDED
BY OTHERS.

VENTY GRADE

FLOOR LINE (TYP.)

1'-0" OVERHANG (TYP.)

2x6 FASIA

METAL ROOF
(BY OTHERS)

1 3/4" x 5 1/2" TRIM BOARD (TYP.)

12

13

METAL ROOF
(BY OTHERS)

WOODEN SIDING

2x6 FASIA

8

12

BROKEN LINE INDICATES
INSIDE CEILING FINISH (TYP.)

1 3/4" x 5 1/2" TRIM BOARD (TYP.)

3

12

2x10 FASIA

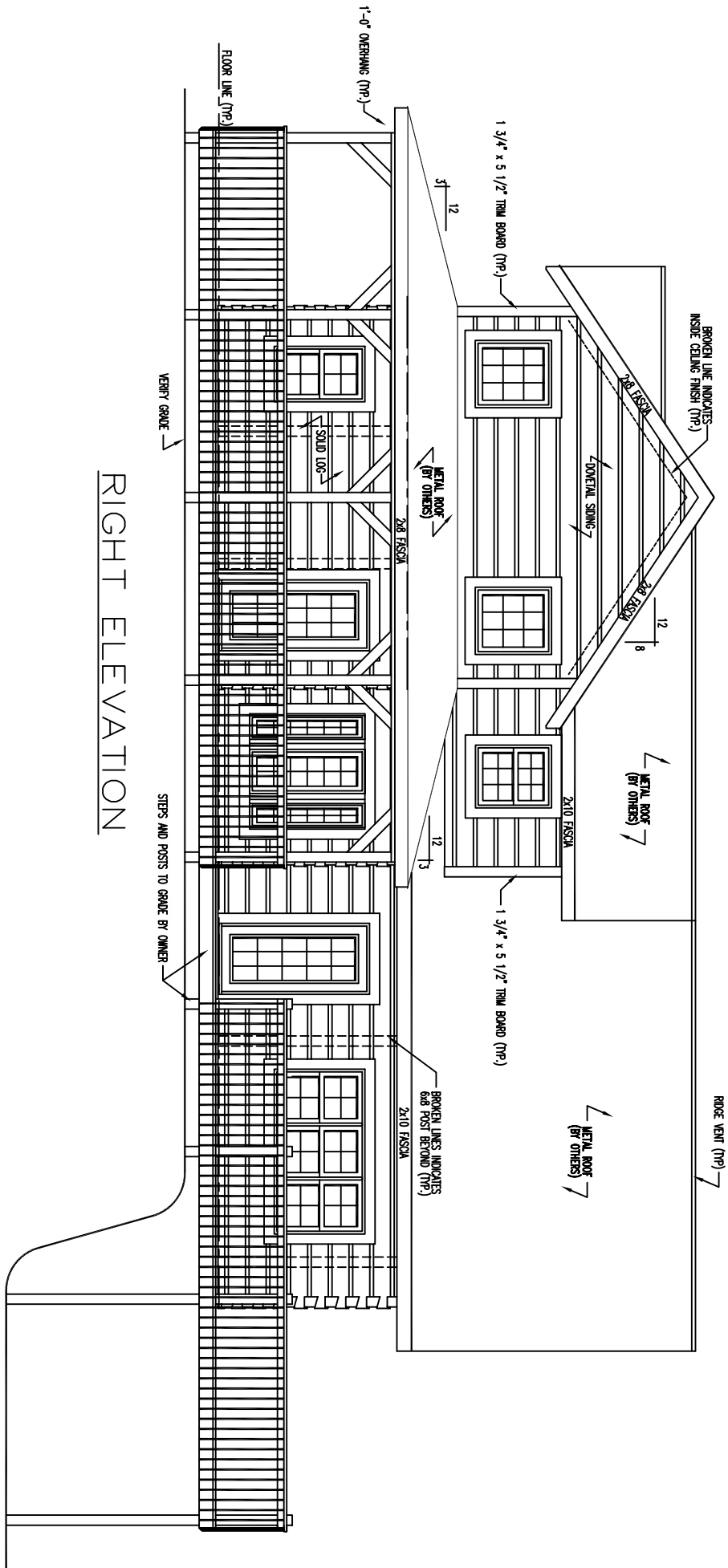
1'-0" OVERHANG (TYP.)

SOLID LOG

BROKEN LINES INDICATE
6x8 POSTS BEHIND

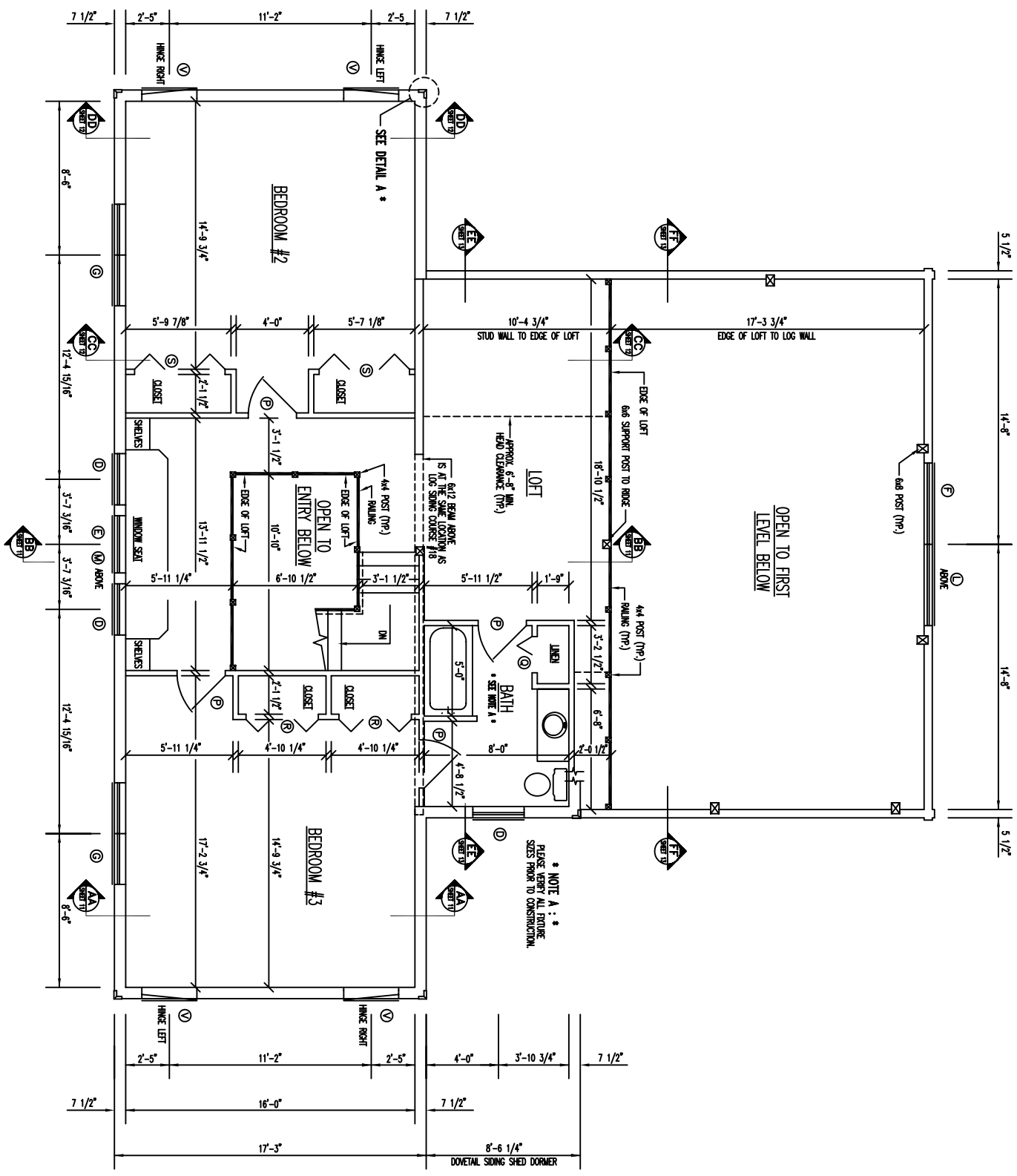
METAL ROOF
(BY OTHERS)

ROOF VENT (TYP.)



RIGHT ELEVATION

FLOOR AREA = 1,064 SQ. FT.



OPEN TO FIRST LEVEL BELOW

* NOTE A : *
PLEASE VERIFY ALL FINISH SIZES PRIOR TO CONSTRUCTION.

SEE DETAIL A *

FLOOR AREA = 1,064 SQ. FT.