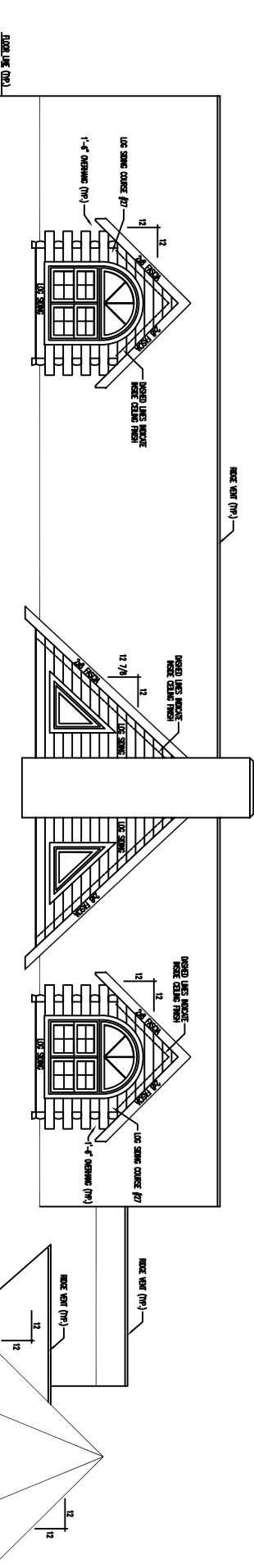
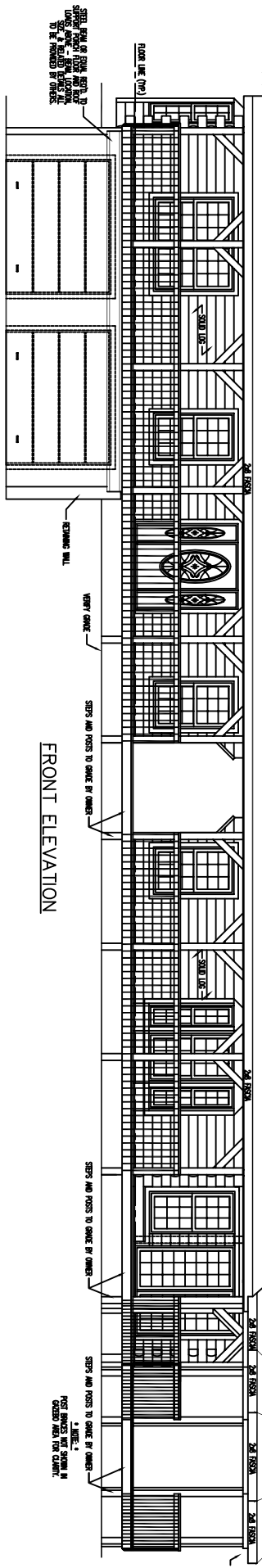


STEEL BEAMS TO BE INSTALLED TO SUPPORT ROOFING SYSTEM. ALL ROOFING SHALL BE INSTALLED IN ACCORDANCE WITH MANUFACTURER'S INSTRUCTIONS.



FRONT ELEVATION

STEPS AND PORCHES TO BE ORDERED BY OWNER

STEPS AND PORCHES TO BE ORDERED BY OWNER

STEPS AND PORCHES TO BE ORDERED BY OWNER

VENT CHIMNEY

REAR PORCH WALL

ROOF LINE (10')

FLOOR LINE (10')

1-1/2\"/>

12

12

ROOF VENT (10')

3/4\"/>

3/4\"/>

3/4\"/>

12 7/8

12

12

12

12

12

12

12

12

12

12

12

12

12

1-1/2\"/>

ROOF VENT (10')

1-1/2\"/>

12

12

12

12

1-1/2\"/>

12

12

12

12

12

12

12

12

12

12

1-1/2\"/>

ROOF VENT (10')

1-1/2\"/>

12

12

12

12

1-1/2\"/>

12

12

12

12

12

12

12

12

12

12

1-1/2\"/>

ROOF VENT (10')

1-1/2\"/>

12

12

12

12

1-1/2\"/>

12

12

12

12

12

12

12

12

12

12

1-1/2\"/>

ROOF VENT (10')

1-1/2\"/>

12

12

12

12

1-1/2\"/>

12

12

12

12

12

12

12

12

12

12

1-1/2\"/>

ROOF VENT (10')

1-1/2\"/>

12

12

12

12

1-1/2\"/>

12

12

12

12

12

12

12

12

12

12

1-1/2\"/>

ROOF VENT (10')

1-1/2\"/>

12

12

12

12

1-1/2\"/>

12

12

12

12

12

12

12

12

12

12

1-1/2\"/>

ROOF VENT (10')

1-1/2\"/>

12

12

12

12

1-1/2\"/>

12

12

12

12

12

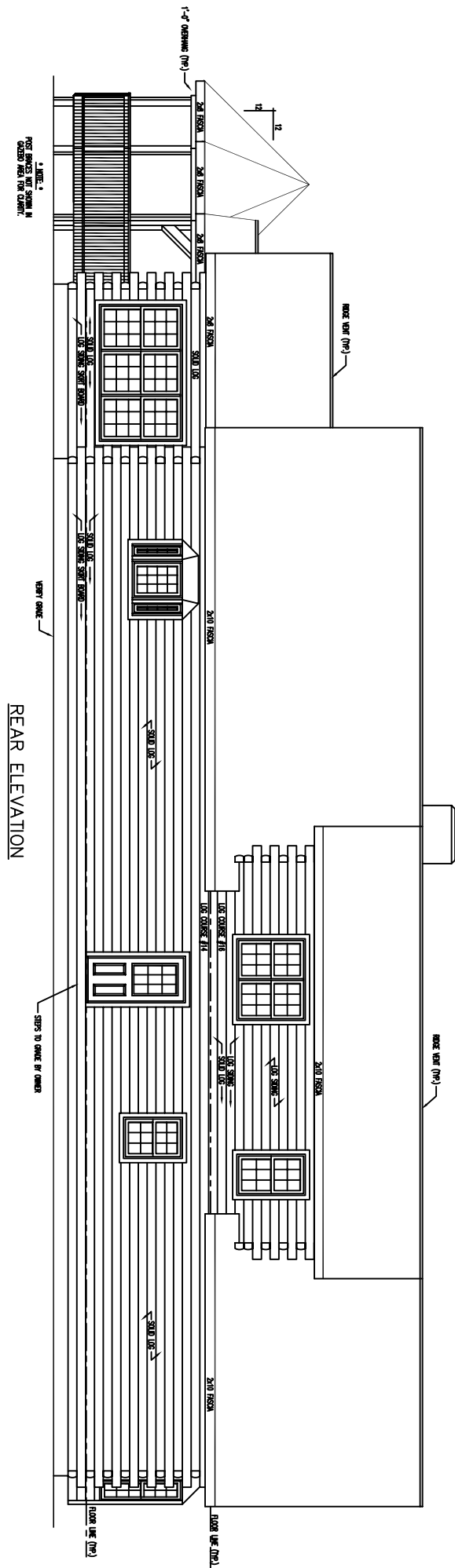
12

12

12

12

12



REAR ELEVATION

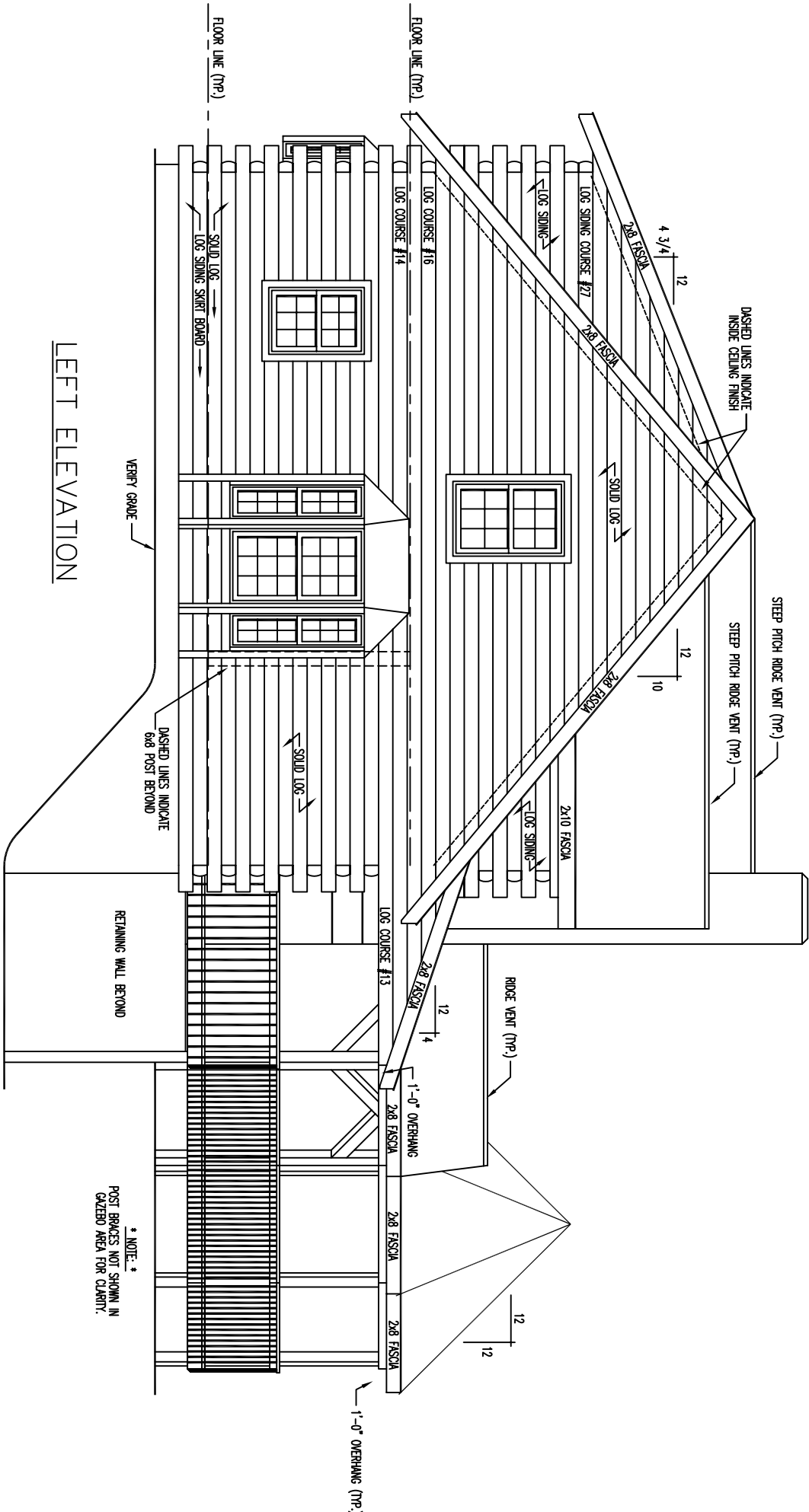
2 PANEL 1
PAGE NUMBER IN
CORNER OF EACH
CLIPPING

VENT GRATE

SIZES TO CHANGE BY OWNER

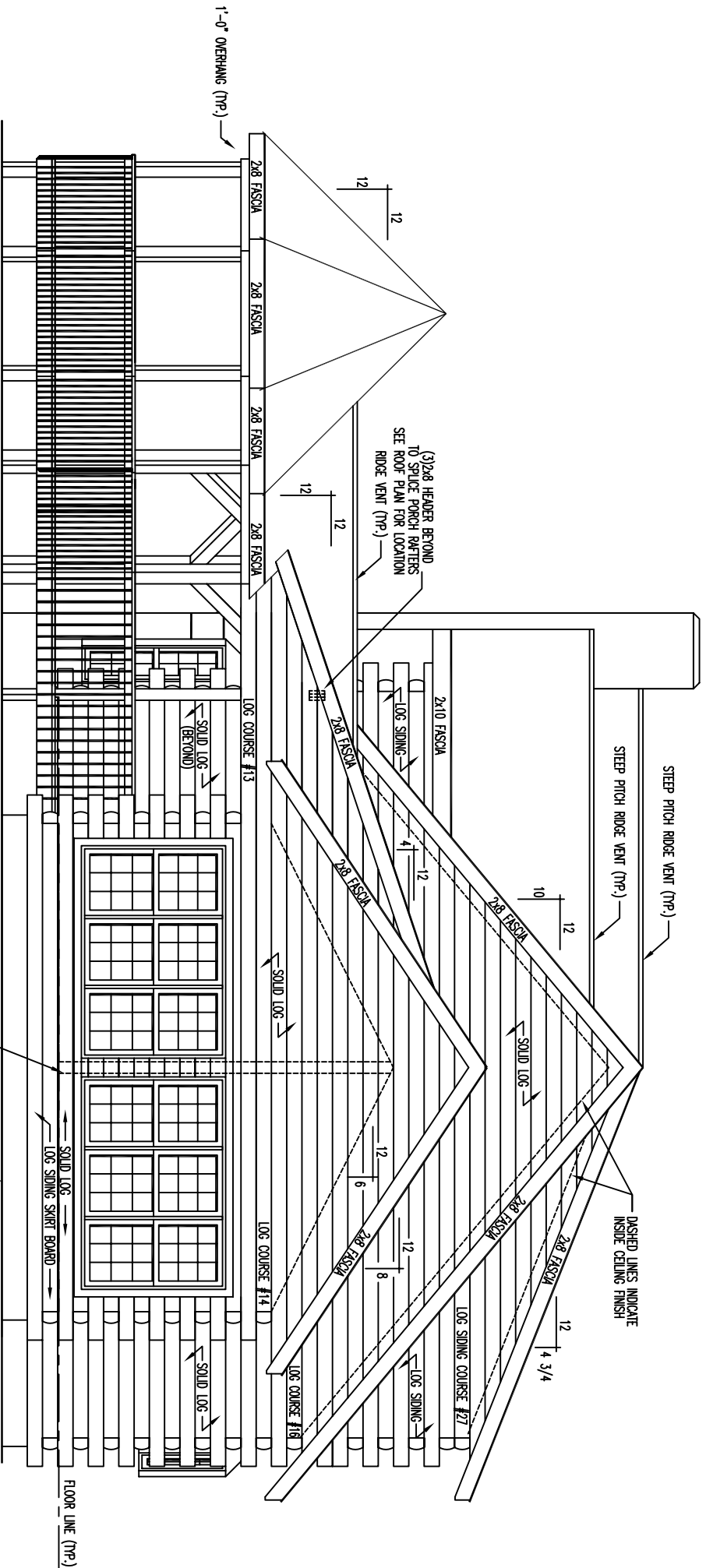
FLOOR LINE (12)

FLOOR LINE (12)



LEFT ELEVATION

* NOTE: *
POST BRACES NOT SHOWN IN
GAZEBO AREA FOR CLARITY.



* NOTE: *
 POST BRACES NOT SHOWN IN
 GAZERO AREA FOR CLARITY.

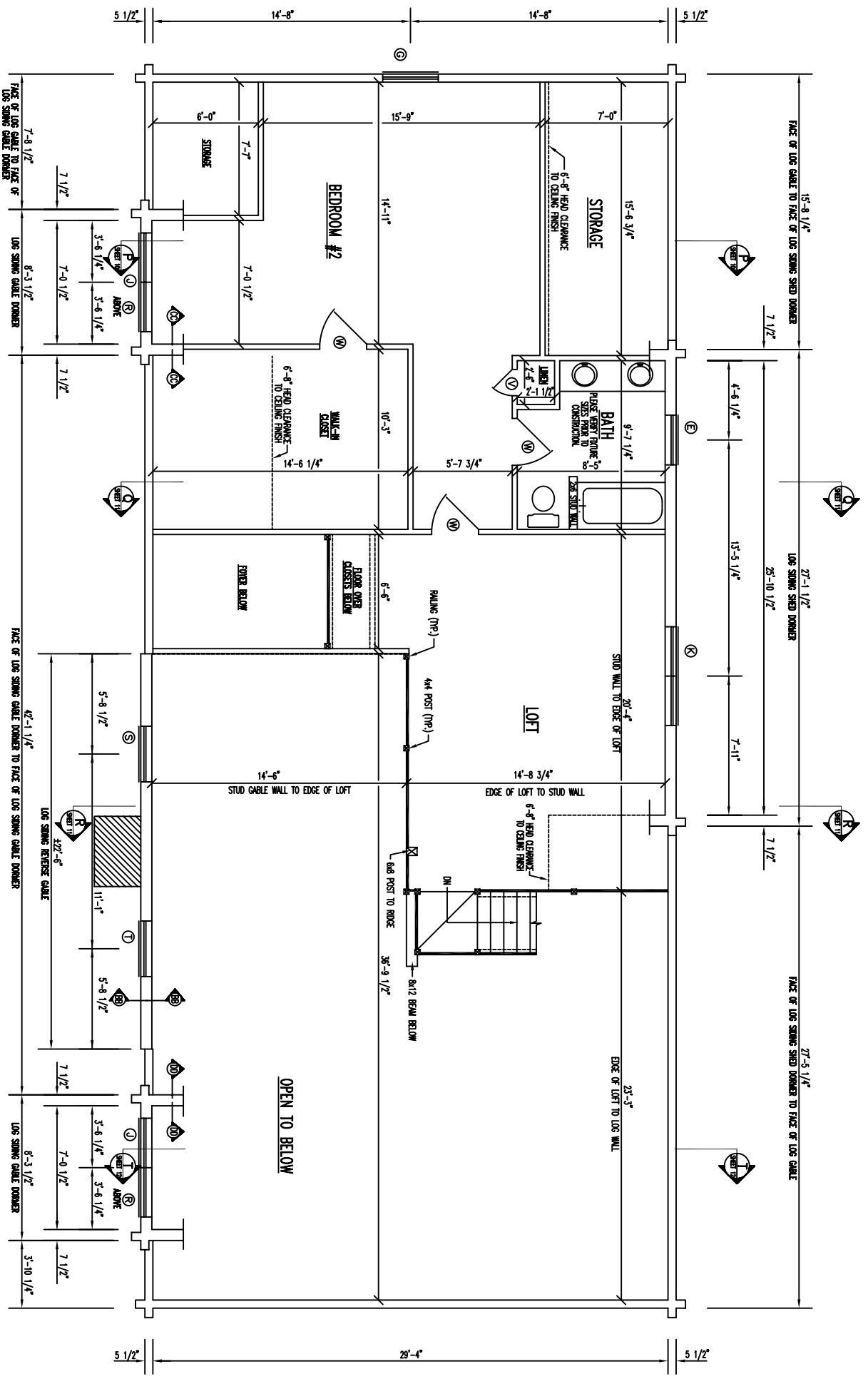
** NOTE: **
 EXTERIOR WINDOW TRIM REQUIRED AROUND PERIMETER OF
 WINDOWS - NO EXTERIOR
 TRIM REQUIRED BETWEEN WINDOWS - AREA BETWEEN
 WINDOWS IS LOG SIDING.

RIGHT ELEVATION

DASHED LINES INDICATE
 6x8 POST BEYOND

VERIFY GRADE

FLOOR LINE (TYP.)



FLOOR PLAN 2ND LEVEL
FLOOR AREA = 1100 SQ. FT.

- INDICATES BEARING WALLS