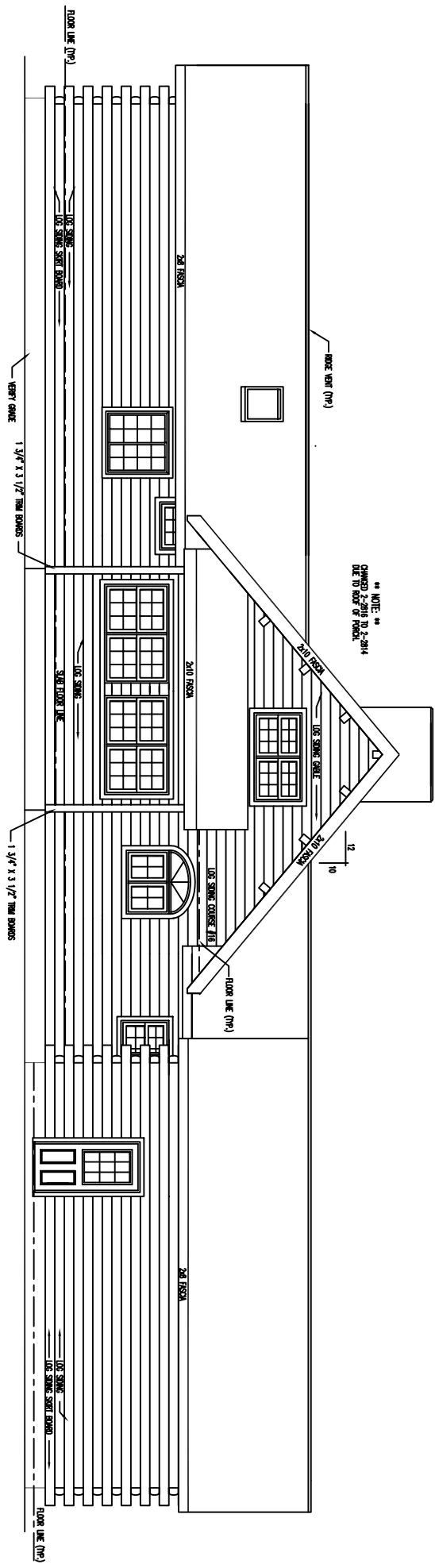
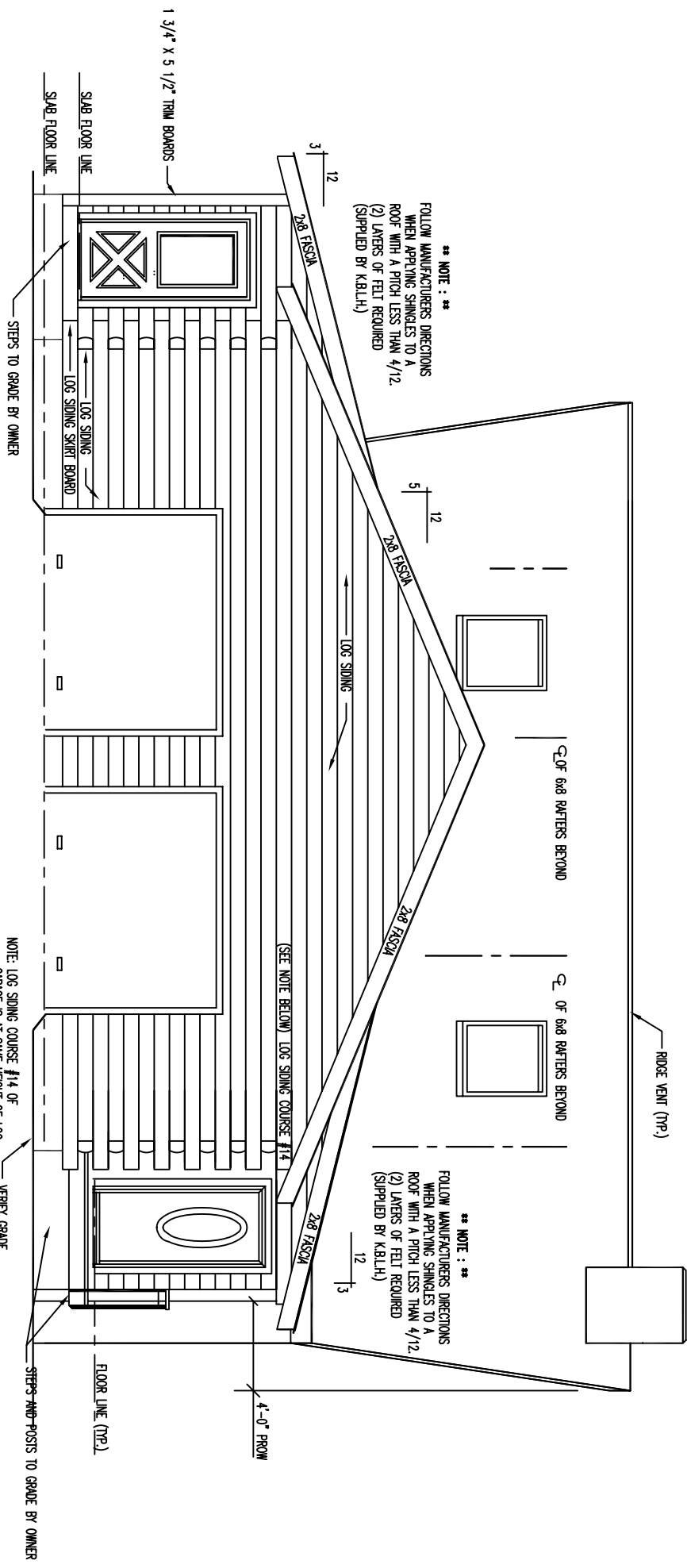


FRONT ELEVATION



** NOTE: **
 CHANGED 2'-8 1/2\"/>

REAR ELEVATION



**** NOTE : ****
 FOLLOW MANUFACTURERS DIRECTIONS
 WHEN APPLYING SHINGLES TO A
 ROOF WITH A PITCH LESS THAN 4/12.
 (2) LAYERS OF FELT REQUIRED
 (SUPPLIED BY K.B.L.H.)

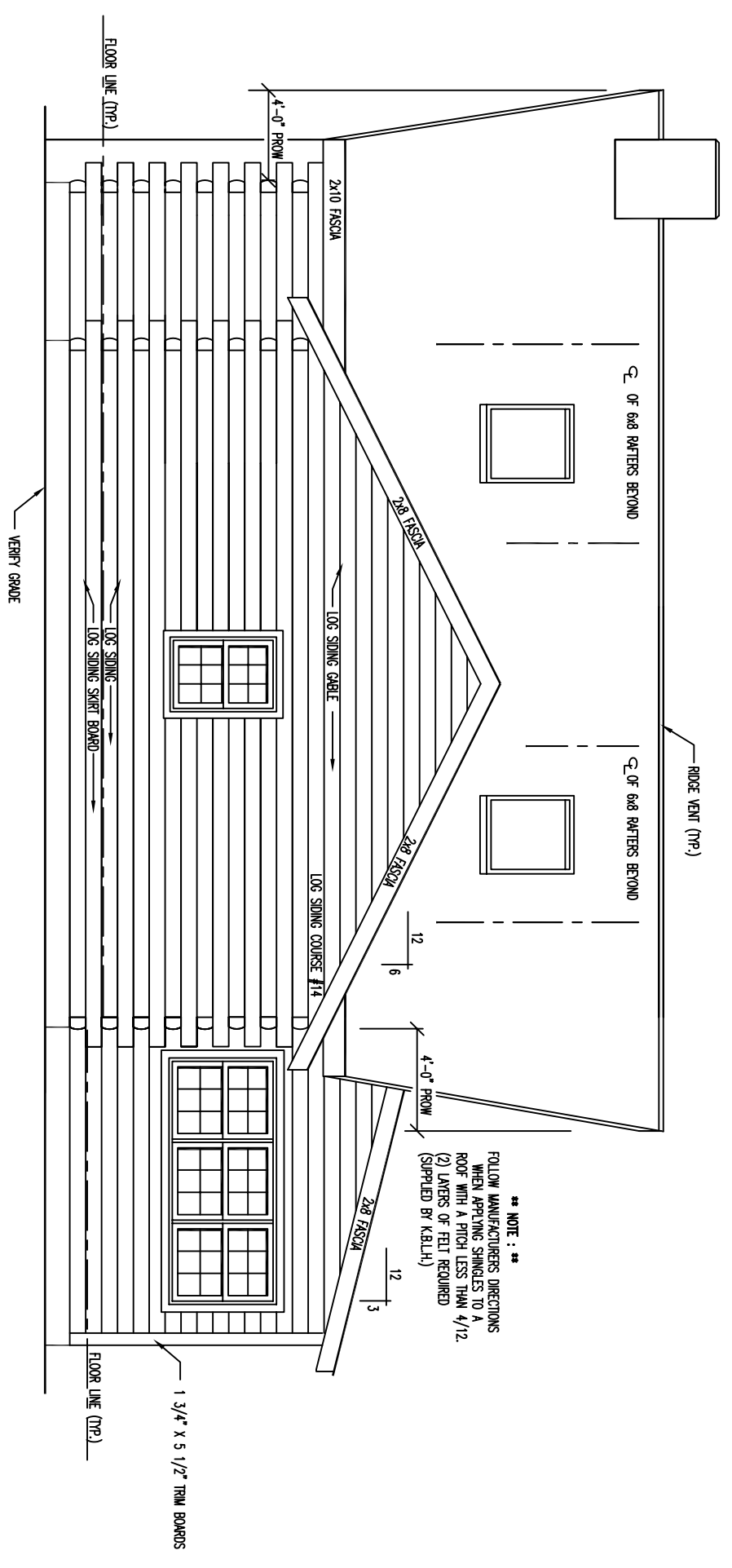
**** NOTE : ****
 FOLLOW MANUFACTURERS DIRECTIONS
 WHEN APPLYING SHINGLES TO A
 ROOF WITH A PITCH LESS THAN 4/12.
 (2) LAYERS OF FELT REQUIRED
 (SUPPLIED BY K.B.L.H.)

NOTE: LOG SIDING COURSE #14 OF
 GARAGE IS AT SAME HEIGHT OF LOG
 SIDING COURSE #13 OF MAIN HOUSE

LEFT ELEVATION

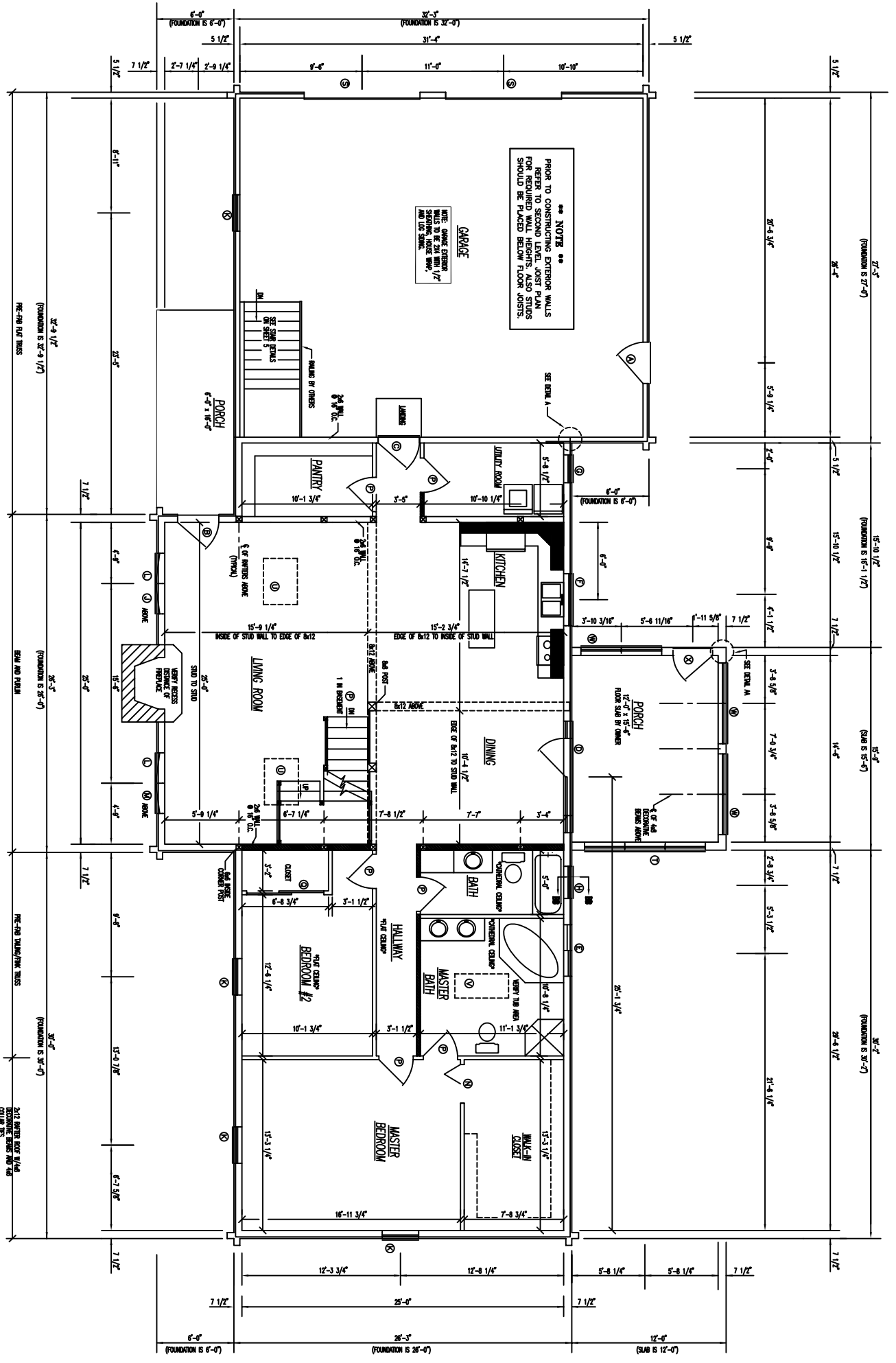
1 3/4" X 5 1/2" TRIM BOARDS
 SLAB FLOOR LINE
 SLAB FLOOR LINE
 LOG SIDING
 LOG SIDING SKIRT BOARD
 STEPS TO GRADE BY OWNER
 RIDGE VENT (TYP.)
 12
 5
 12
 2x8 FASCHA
 LOG SIDING
 2x8 FASCHA
 2x8 FASCHA
 2x8 FASCHA
 2x8 FASCHA
 2x8 FASCHA
 12
 3
 4'-0" PROW
 FLOOR LINE (TYP.)
 STEPS AND POSTS TO GRADE BY OWNER
 VERIFY GRADE

RIGHT ELEVATION



**** NOTE : ****
 FOLLOW MANUFACTURERS DIRECTIONS
 WHEN APPLYING SHINGLES TO A
 ROOF WITH A PITCH LESS THAN 4/12.
 (2) LAYERS OF FELT REQUIRED
 (SUPPLIED BY K.B.L.H.)

1 3/4" X 5 1/2" TRIM BOARDS



NOTE:
 --- FINISHED LINE MARKS THE
 --- UNFINISHED EXTERIOR WALLS

FLOOR PLAN 1st LEVEL

FLOOR PLAN 2ND LEVEL

