

STANDARD CLINTON

FLOOR PLANS AND ELEVATIONS FOR 2003



LOG PROFILE

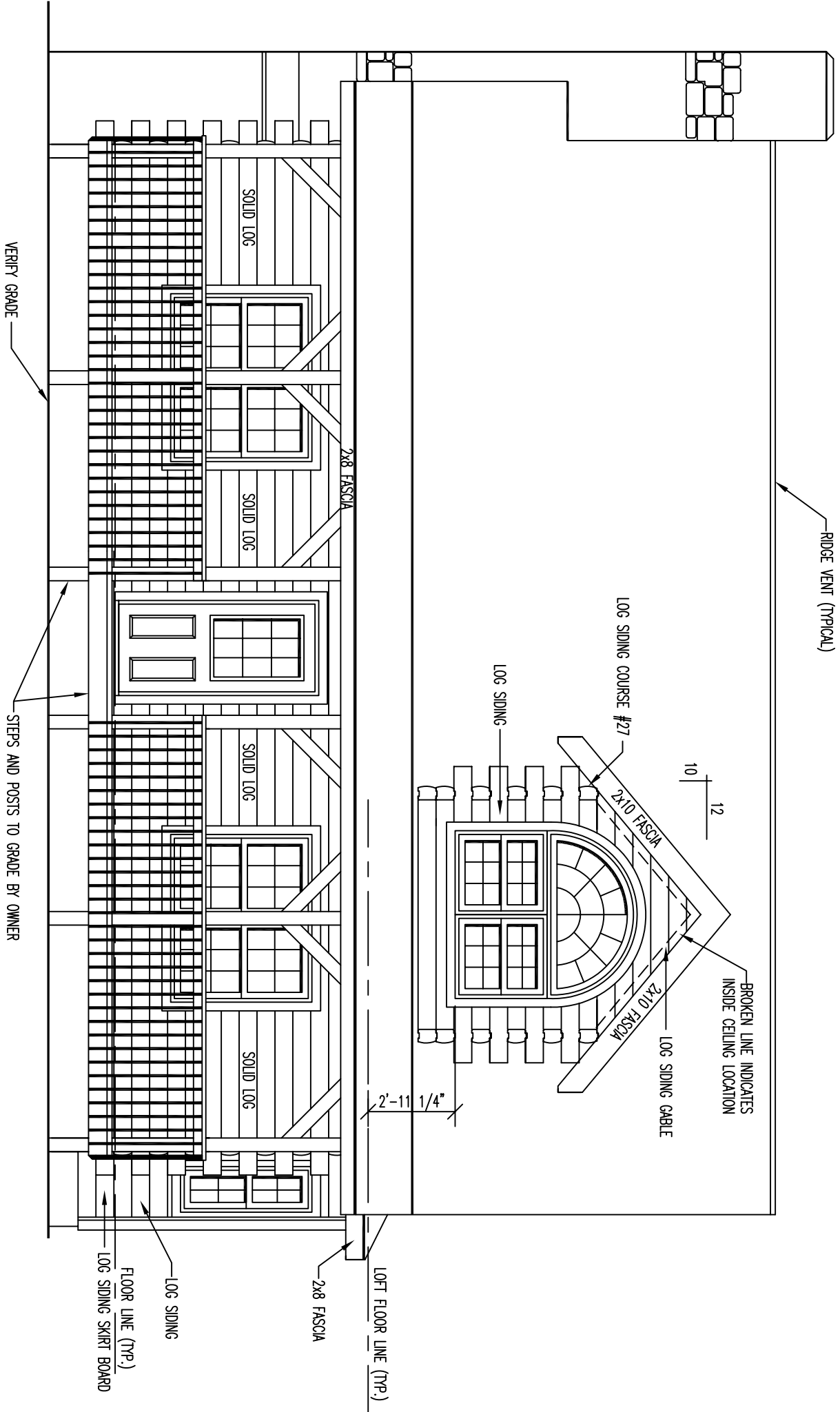
** * GENERAL NOTES * *

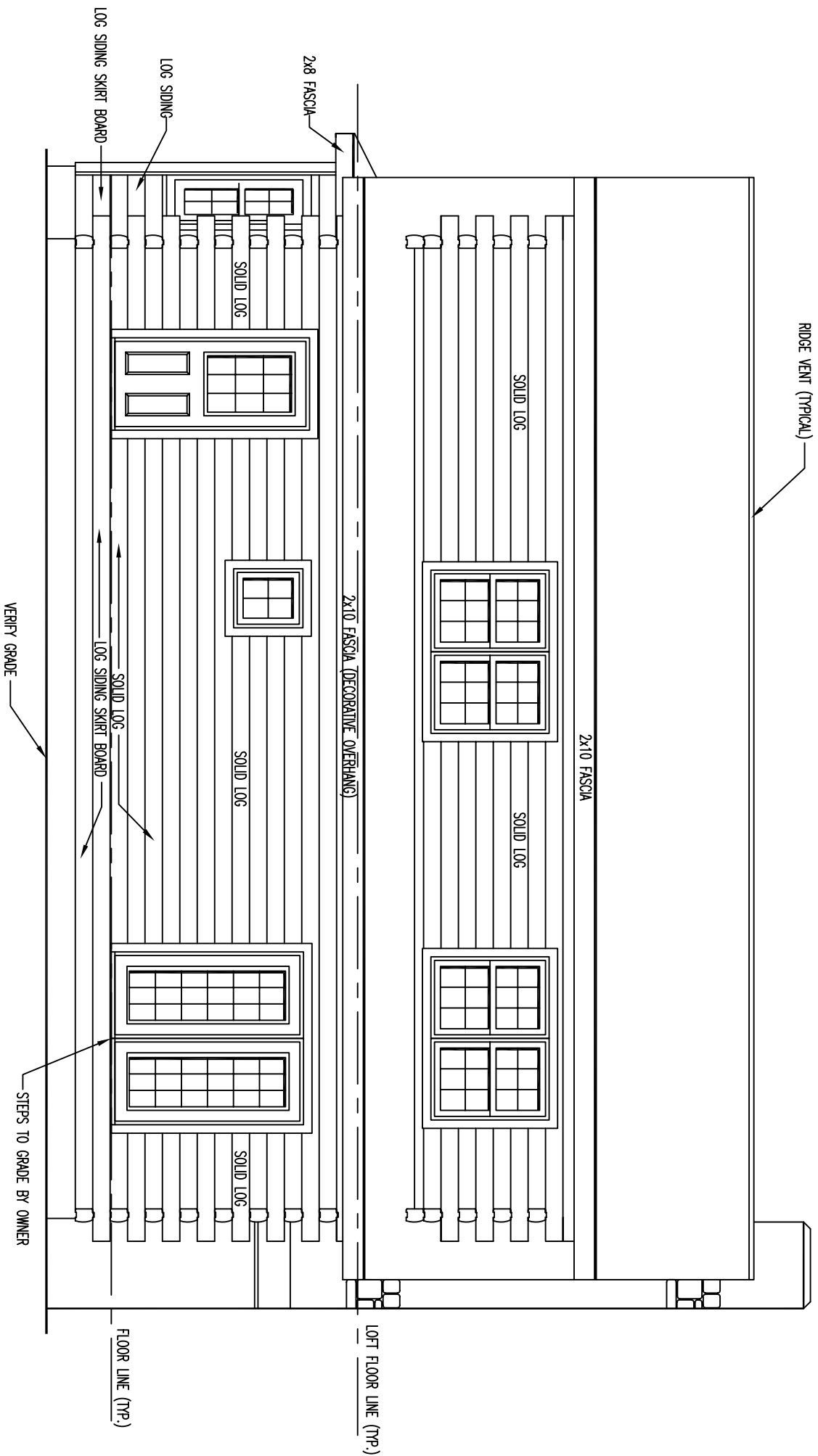
- 6 X 8 D SINGLE TONGUE WHITE PINE LOGS
- 16 LOG COURSES TO SQUARE - AT WING AREAS,
- 27 LOG COURSES TO SQUARE AT DORMERS
- ALL INTERIOR STUD WALLS TO BE 24" O.C. UNLESS NOTED,
- 2nd FLOOR JOISTS LOCATED IN 14th LOG COURSE,
- ALL PARTITION WALLS RUNNING TO THE TOP OF THE 14th LOG COURSE WILL REQUIRE A DOUBLE TOP AND BOTTOM PLATE,
- NO LOG SIPING TO BE PROVIDED BELOW PORCH / DECK AREAS,

- STEPS AND POSTS TO GRADE ARE BY OWNER / OTHERS,
- 1 3/4" X 3 1/2" EXTERIOR TRIM MATERIAL SHOWN AT ALL DOORS AND WINDOW UNLESS NOTED,
- ALL OVERHANGS APPROX. 2'-0" UNLESS NOTED,
- ROOF SYSTEM DESIGNED FOR 40lb. SNOW LOAD,
- WINDOW GRILLE PATTERNS SHOWN ARE FOR ILLUSTRATION ONLY, ACTUAL PATTERNS MAY VARY,
- VERIFY GRADE ON SITE,

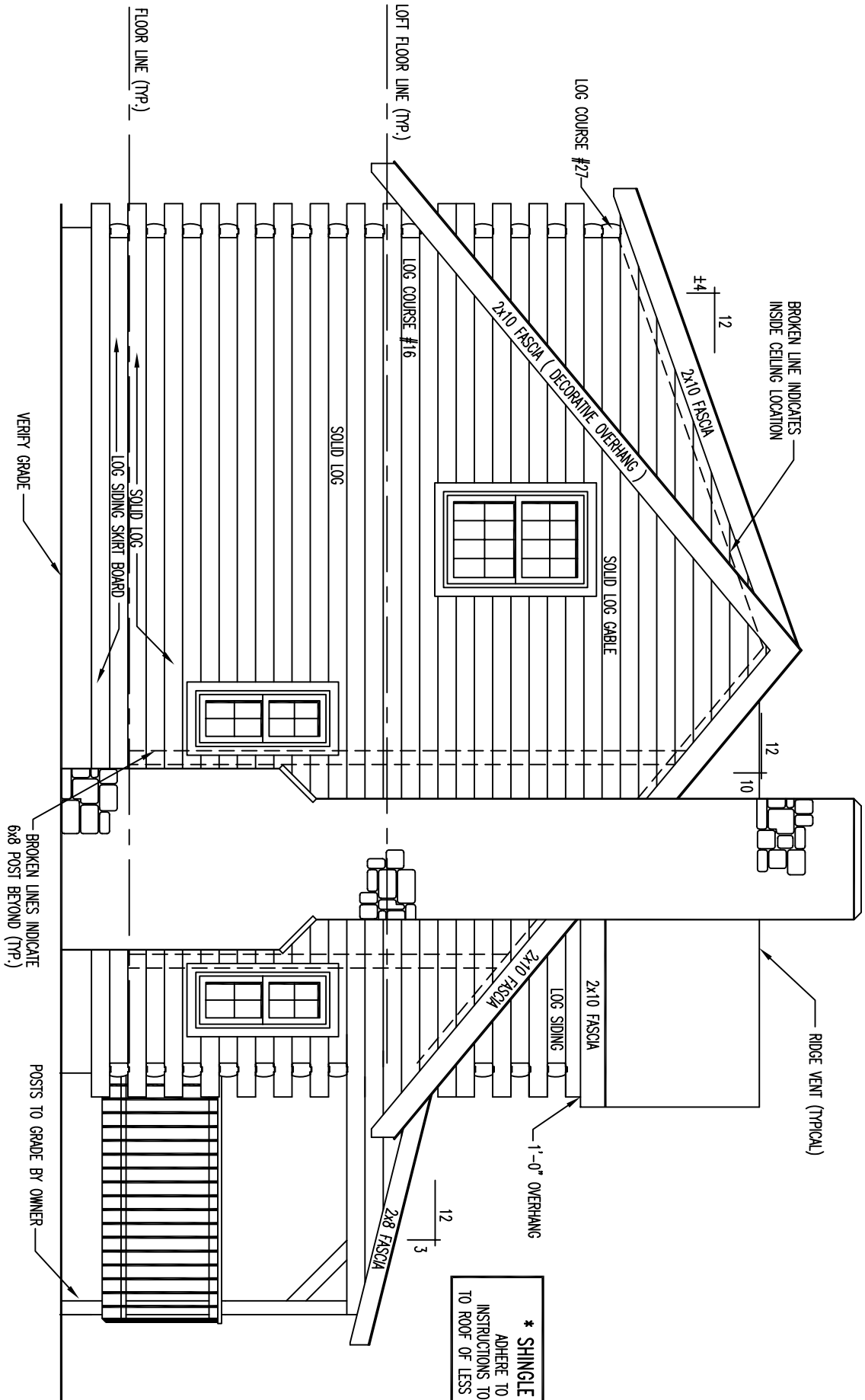
967 SQ. FT. FIRST FLOOR	272 SQ. FT. PORCH / DECK
650 SQ. FT. SECOND FLOOR	

FRONT ELEVATION





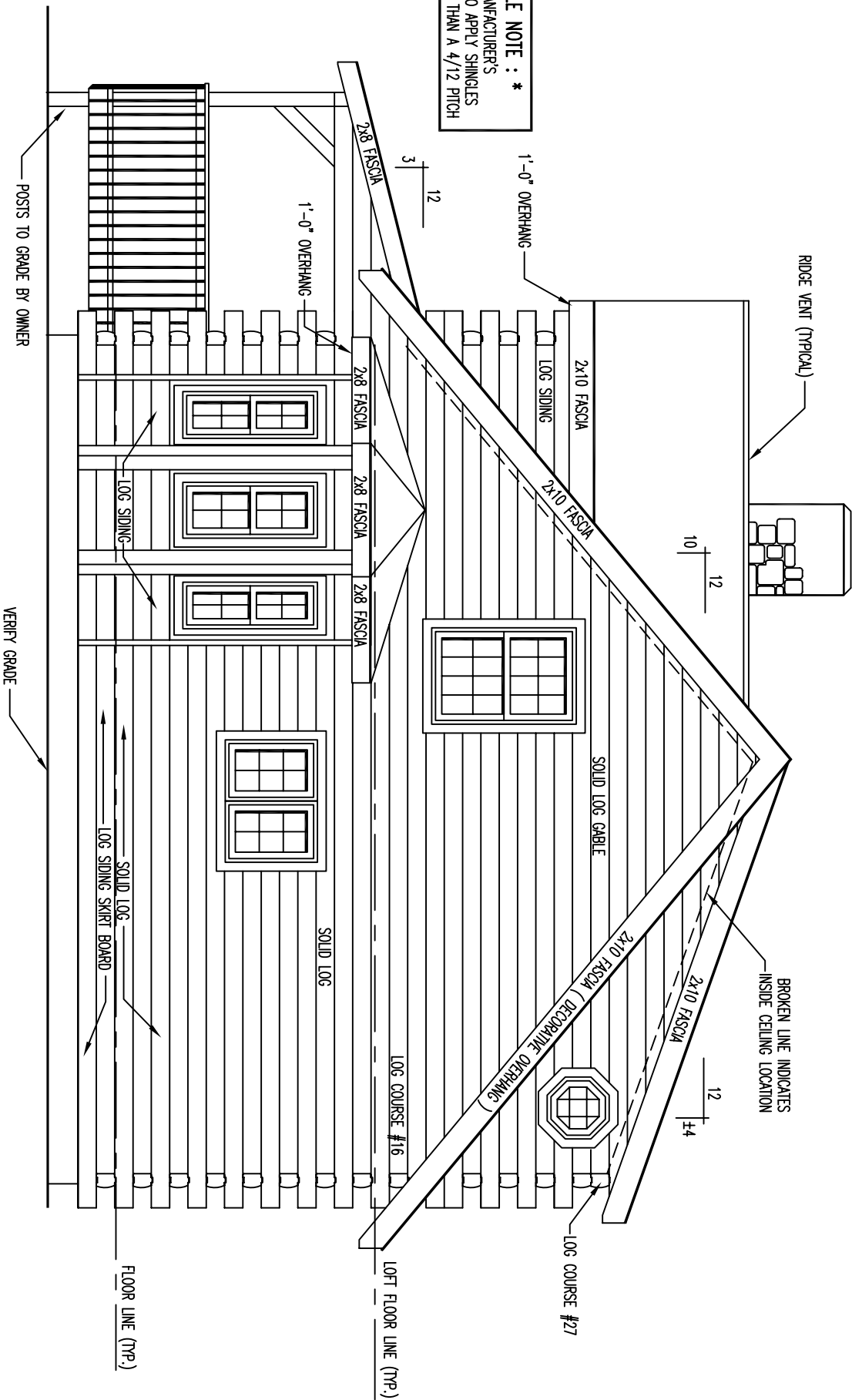
REAR ELEVATION



LEFT ELEVATION

*** SHINGLE NOTE : ***
 ADHERE TO MANUFACTURER'S
 INSTRUCTIONS TO APPLY SHINGLES
 TO ROOF OF LESS THAN A 4/12 PITCH

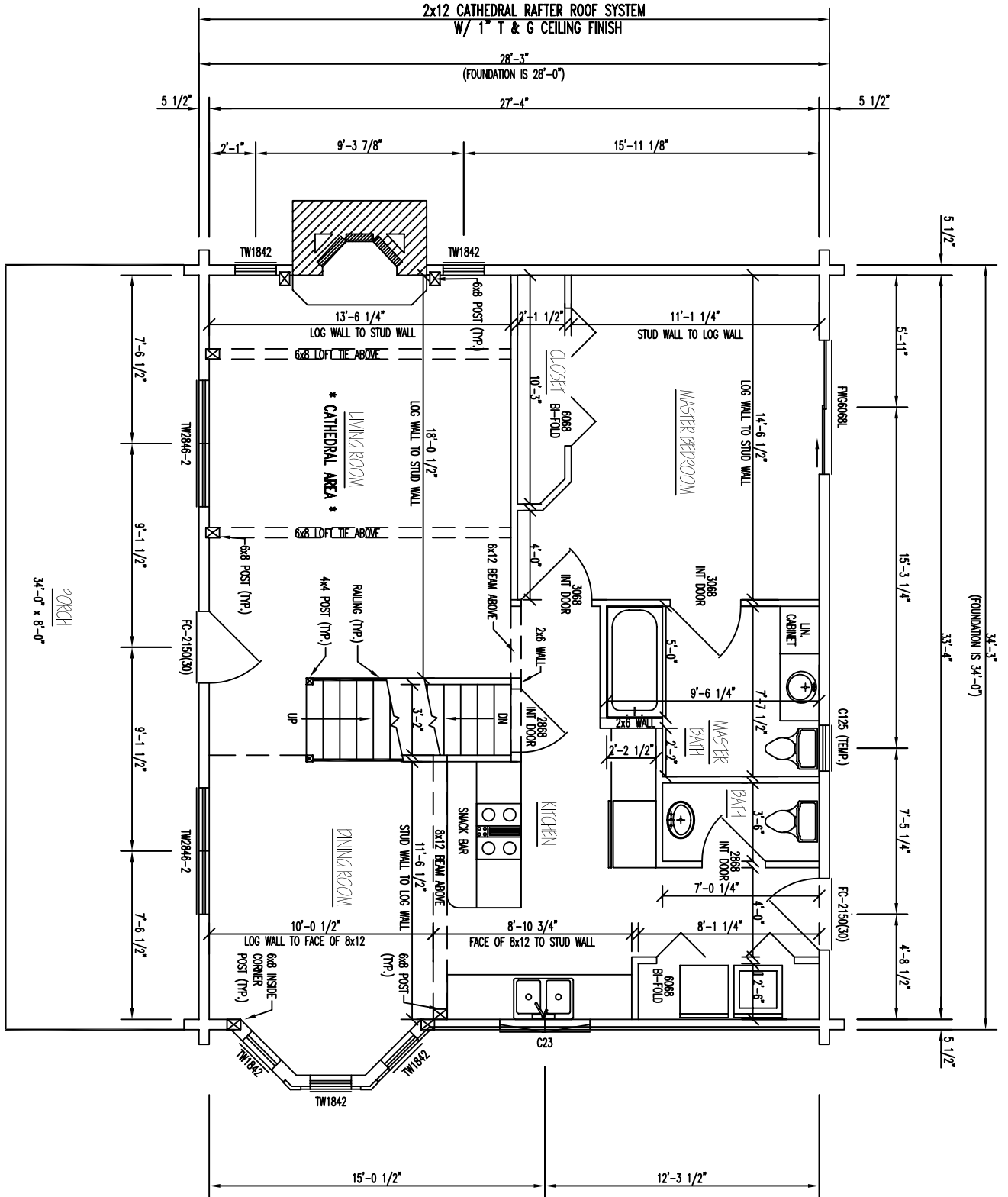
*** SHINGLE NOTE : ***
 ADHERE TO MANUFACTURER'S
 INSTRUCTIONS TO APPLY SHINGLES
 TO ROOF OF LESS THAN A 4/12 PITCH

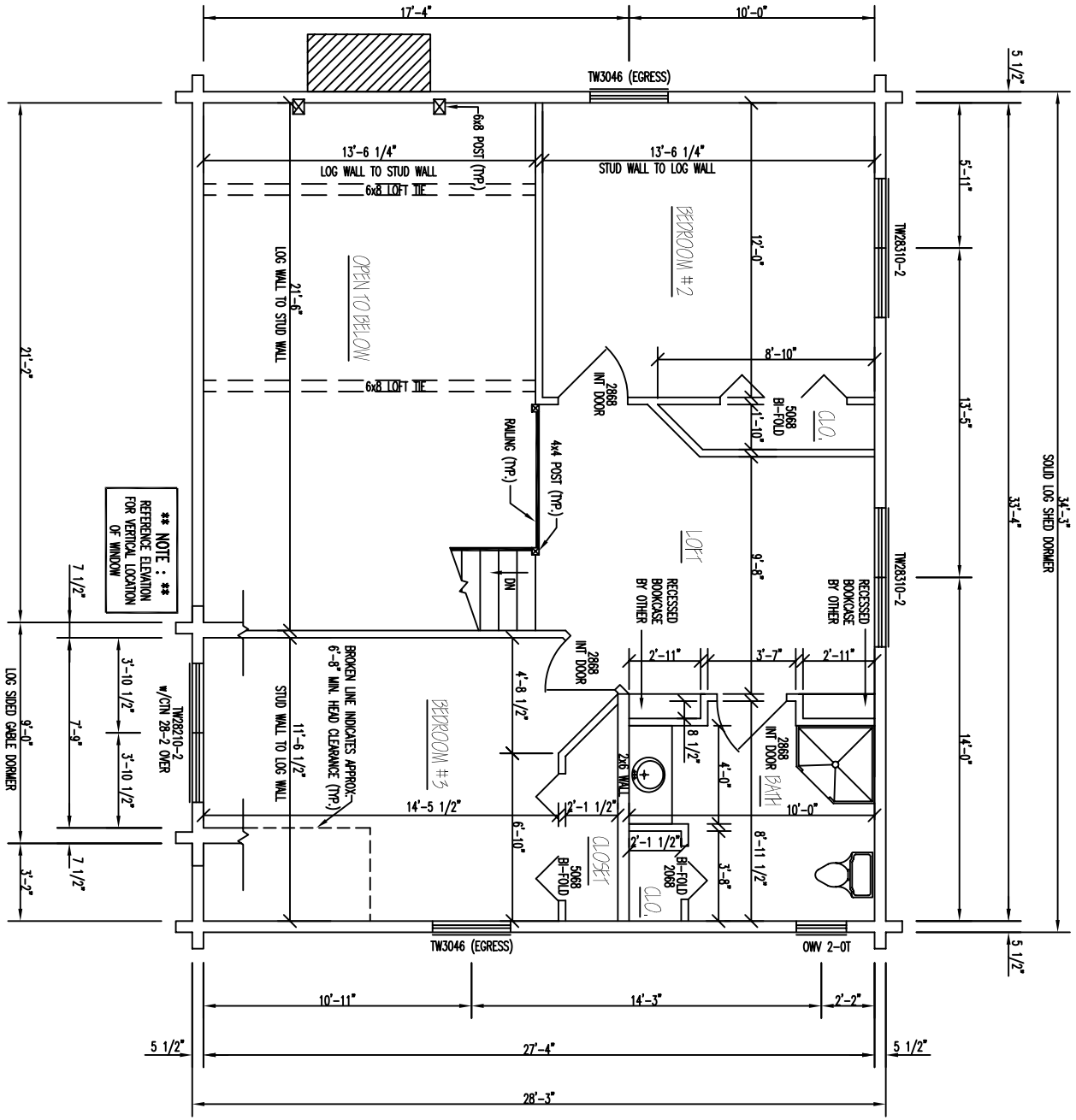


RIGHT ELEVATION

FLOOR PLAN 1st LEVEL

FLOOR AREA = 967 SQ. FT.





**** NOTE : ****
 REFERENCE ELEVATION
 FOR VERTICAL LOCATION
 OF WINDOW

FLOOR PLAN 2ND LEVEL

FLOOR AREA = 650 SQ. FT.