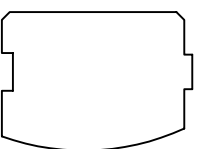


STANDARD CLEARLAKE FLOOR PLANS AND ELEVATIONS FOR 1998

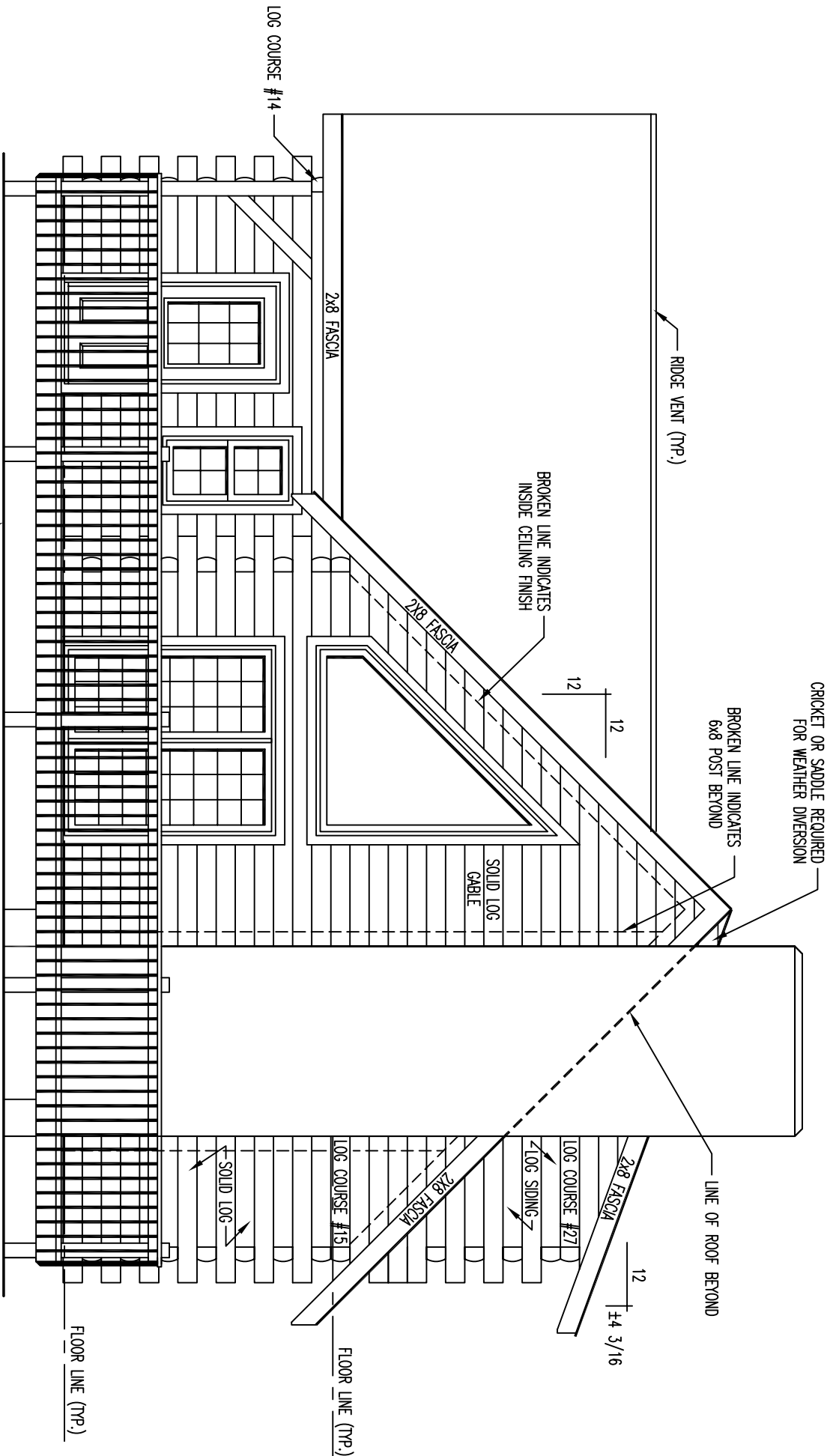


LOG PROFILE

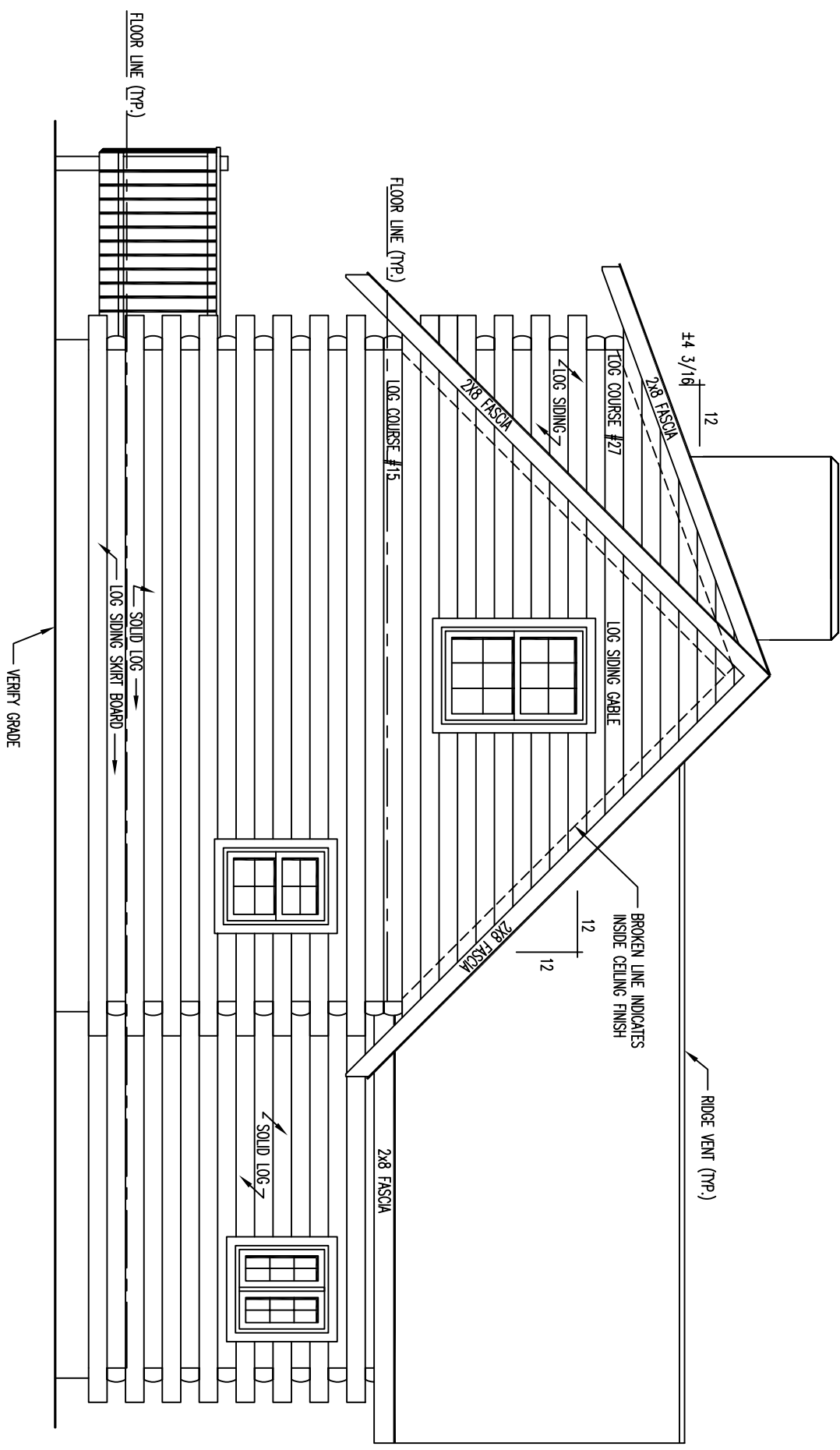
** * GENERAL NOTES * *

- 6 X 8 D SINGLE TONGUE WHITE PINE LOGS
- 15 LOG COURSES TO SQUARE - AT MAIN HOUSE.
- 14 LOG COURSES TO SQUARE - AT WING.
- ALL INTERIOR STUD WALLS TO BE 24" O.C. UNLESS NOTED.
- ALL EXTERIOR STUD WALLS TO BE 24" O.C. UNLESS NOTED.
- 2nd FLOOR JOISTS LOCATED IN 14th LOG COURSE.
- ALL PARTITION WALLS RUNNING TO THE TOP OF THE 14th LOG COURSE WILL REQUIRE A DOUBLE TOP AND BOTTOM PLATE.
- STEPS AND POSTS TO GRADE BY OWNER / OTHERS.
- 1 3/4" X 3 1/2" EXTERIOR TRIM MATERIAL SHOWN AT ALL DOORS AND WINDOWS UNLESS NOTED.
- ALL OVERHANGS APPROX. 2'-0" UNLESS NOTED.
- ROOF SYSTEM DESIGNED FOR 40 LB. SNOW LOAD.
- WINDOW GRILLE PATTERNS SHOWN ARE FOR ILLUSTRATION ONLY, ACTUAL PATTERNS MAY VARY.
- VERIFY GRADE ON SITE.
- NO LOG SIPING TO BE PROVIDED BELOW PORCH AREA.

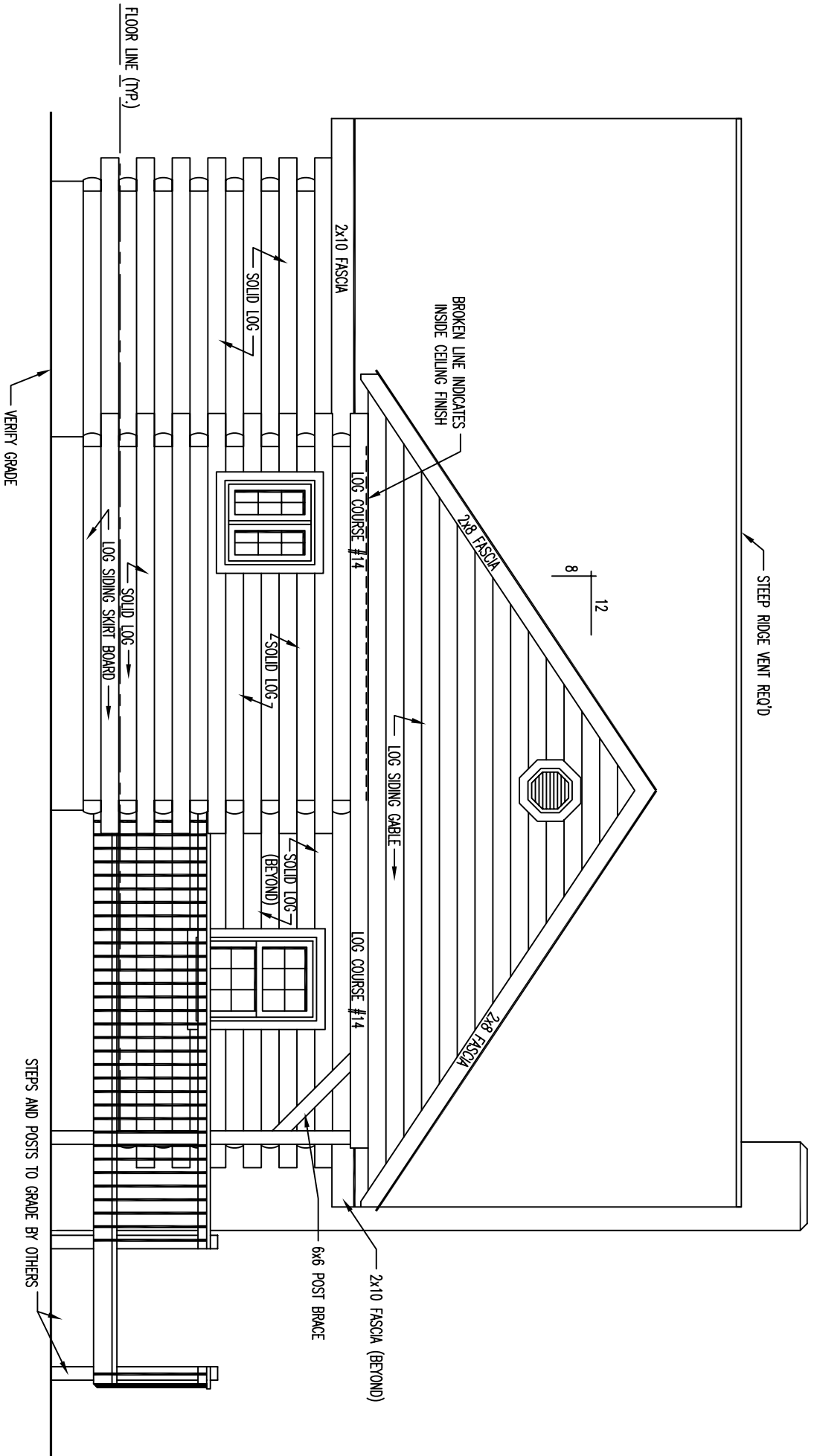
871 SQ. FT. FIRST FLOOR	136 SQ. FT. PORCH
377 SQ. FT. SECOND FLOOR	272 SQ. FT. DECK



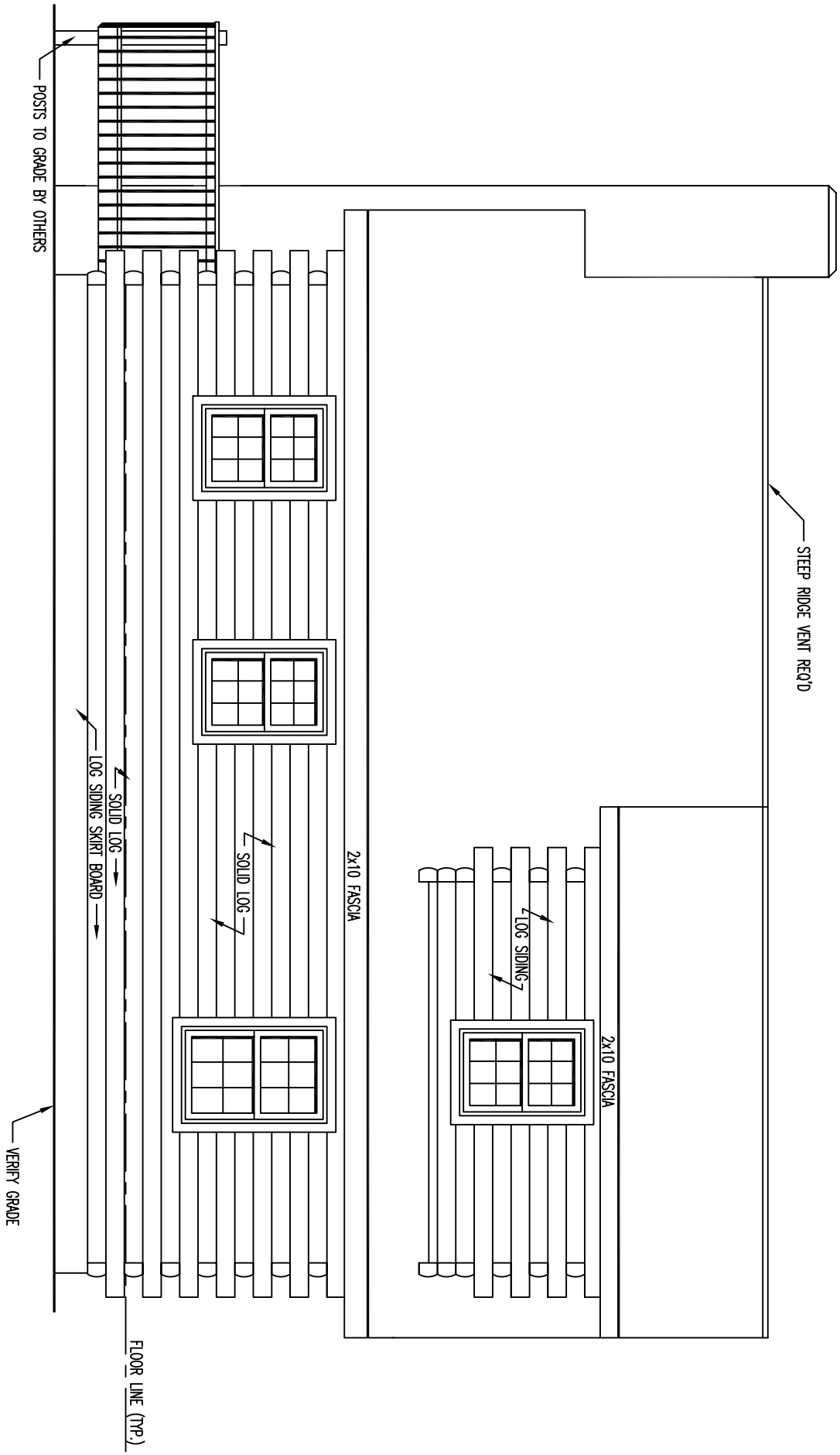
FRONT ELEVATION



REAR ELEVATION

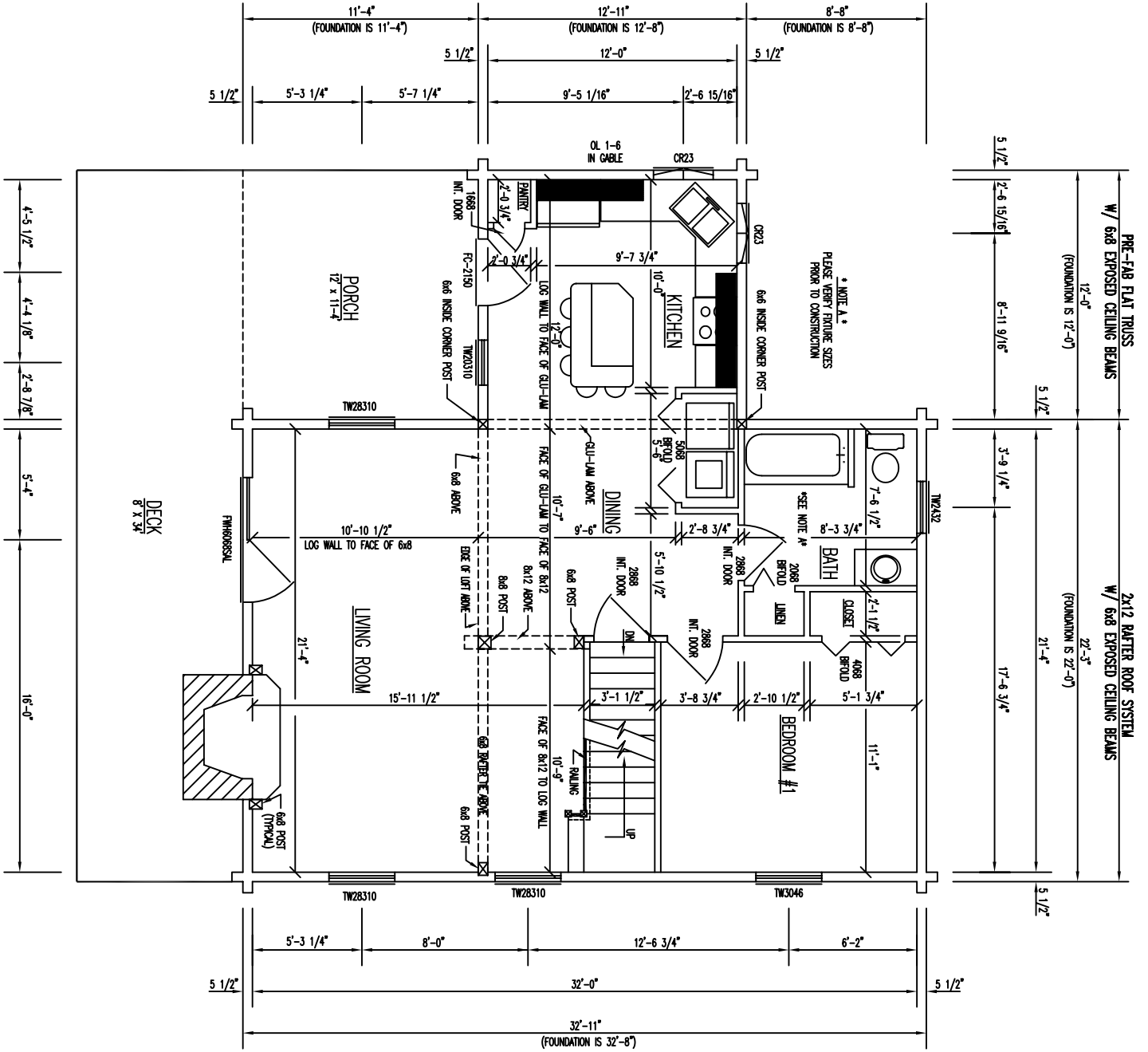


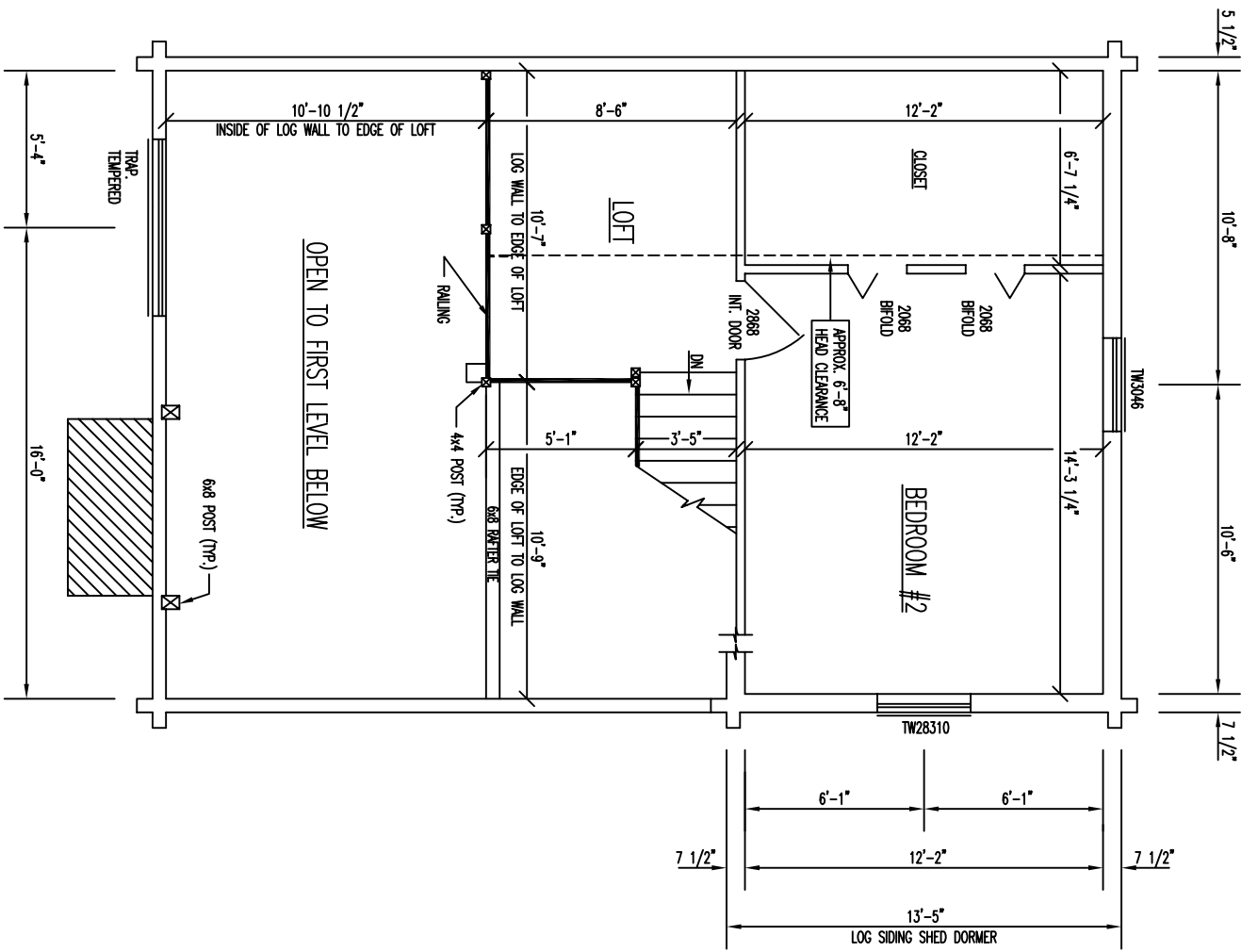
LEFT ELEVATION



RIGHT ELEVATION

FIRST FLOOR PLAN
 FLOOR AREA = 871 SQ. FT.





SECOND FLOOR PLAN

FLOOR AREA = 377 SQ. FT.