

# STANDARD CLEARFIELD OPT. A

## FLOOR PLANS AND ELEVATIONS FOR 1998

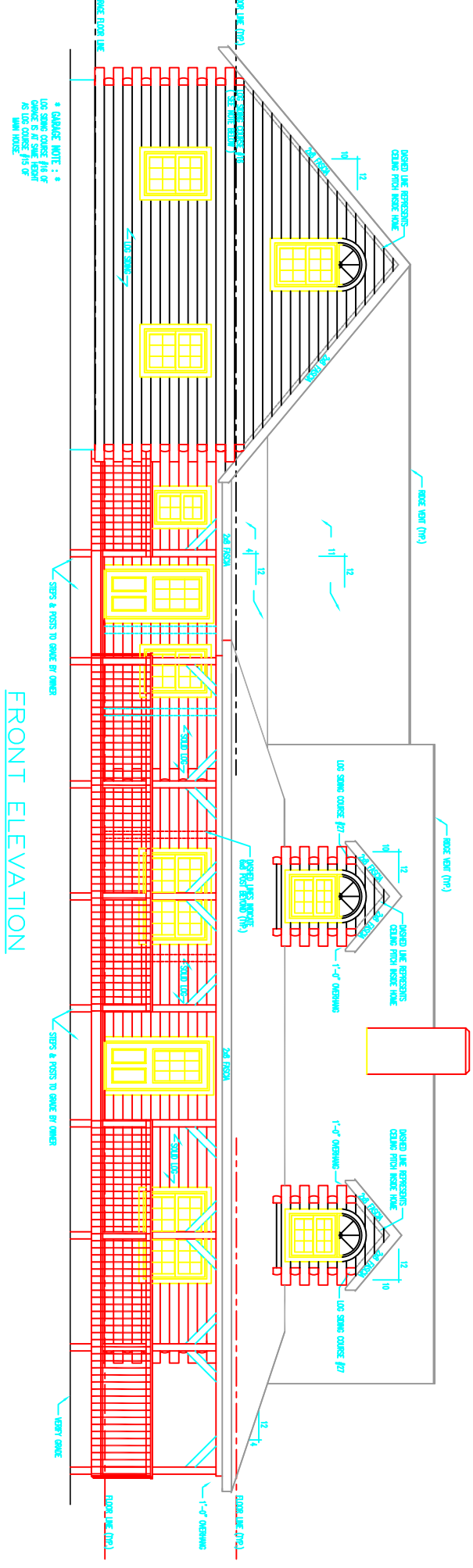


LOG PROFILE

### \*\* GENERAL NOTES \*\*

- 6 X 8 D SINGLE TONGUE WHITE PINE LOGS
- 16 LOG COURSES TO SQUARE - AT MAIN HOUSE & COUNTRY KITCHEN.
- 16 LOG SIDING COURSES TO SQUARE - AT GARAGE AREA.
- 27 LOG SIDING COURSES TO SQUARE - AT DORMER AREAS.
- ALL INTERIOR STUD WALLS TO BE 24" O.C. UNLESS NOTED.
- 2nd FLOOR JOISTS LOCATED IN 14th LOG COURSE.
- ALL PARTITION WALLS RUNNING TO THE TOP OF THE 14th LOG COURSE WILL REQUIRE A DOUBLE TOP AND BOTTOM PLATE.
- NO LOG SIDING TO BE PROVIDED BELOW PORCH AREAS.
- STEPS AND POSTS TO GRADE ARE BY OWNER / OTHERS.
- 1 3/4" X 3 1/2" EXTERIOR TRIM MATERIAL SHOWN AT ALL DOORS AND WINDOW UNLESS NOTED.
- EXTERIOR TRIM AT ARCH OF CIRCLE TOP IS 2x10 MATERIAL.
- ALL OVERHANGS APPROX. 2'-0" UNLESS NOTED.
- ROOF SYSTEM DESIGNED FOR 40LB. SNOW LOAD.
- WINDOW GRILLE PATTERNS SHOWN ARE FOR ILLUSTRATION ONLY, ACTUAL PATTERNS MAY VARY.
- VERIFY GRADE ON SITE.

1402 SQ. FT. FIRST FLOOR	662 SQ. FT. GARAGE	730 SQ. FT. PORCH
889 SQ. FT. SECOND FLOOR	371 SQ. FT. BONUS ROOM	



FRONT ELEVATION

CHARGE NOTE : \*  
LUG SHIM COURSE # 27  
LUG SHIM COURSE # 27  
LUG SHIM COURSE # 27  
AS LUG SHIM COURSE # 27  
W/IN HOUSE

SIPS & MOUS TO GRABE BY OWNER

SIPS & MOUS TO GRABE BY OWNER

1/4" WHITE VINYL GRANITE

SHINGLES

SHINGLES

SHINGLES

LUG SHIM COURSE #27

LUG SHIM COURSE #27

LUG SHIM COURSE #27

1'-0" OVERHANG

1'-0" OVERHANG

1'-0" OVERHANG

ROCK WOOL (R19)

ROCK WOOL (R19)

ROCK WOOL (R19)

ROCK WOOL (R19)

ROCK WOOL (R19)

ROCK WOOL (R19)

ROCK WOOL (R19)

ROCK WOOL (R19)

ROCK WOOL (R19)

ROCK WOOL (R19)

ROCK WOOL (R19)

ROCK WOOL (R19)

ROCK WOOL (R19)

ROCK WOOL (R19)

ROCK WOOL (R19)

ROCK WOOL (R19)

ROCK WOOL (R19)

ROCK WOOL (R19)

ROCK WOOL (R19)

ROCK WOOL (R19)

ROCK WOOL (R19)

ROCK WOOL (R19)

ROCK WOOL (R19)

ROCK WOOL (R19)

ROCK WOOL (R19)

ROCK WOOL (R19)

ROCK WOOL (R19)

ROCK WOOL (R19)

ROCK WOOL (R19)

ROCK WOOL (R19)

ROCK WOOL (R19)

ROCK WOOL (R19)

ROCK WOOL (R19)

ROCK WOOL (R19)

ROCK WOOL (R19)

ROCK WOOL (R19)

ROCK WOOL (R19)

ROCK WOOL (R19)

ROCK WOOL (R19)

ROCK WOOL (R19)

ROCK WOOL (R19)

ROCK WOOL (R19)

ROCK WOOL (R19)

ROCK WOOL (R19)

ROCK WOOL (R19)

ROCK WOOL (R19)

ROCK WOOL (R19)

ROCK WOOL (R19)

ROCK WOOL (R19)

ROCK WOOL (R19)

ROCK WOOL (R19)

ROCK WOOL (R19)

ROCK WOOL (R19)

ROCK WOOL (R19)

ROCK WOOL (R19)

ROCK WOOL (R19)

ROCK WOOL (R19)

ROCK WOOL (R19)

ROCK WOOL (R19)

ROCK WOOL (R19)

ROCK WOOL (R19)

ROCK WOOL (R19)

ROCK WOOL (R19)

ROCK WOOL (R19)

ROCK WOOL (R19)

ROCK WOOL (R19)

ROCK WOOL (R19)

ROCK WOOL (R19)

ROCK WOOL (R19)

ROCK WOOL (R19)

ROCK WOOL (R19)

ROCK WOOL (R19)

ROCK WOOL (R19)

ROCK WOOL (R19)

ROCK WOOL (R19)

ROCK WOOL (R19)

ROCK WOOL (R19)

ROCK WOOL (R19)

ROCK WOOL (R19)

ROCK WOOL (R19)

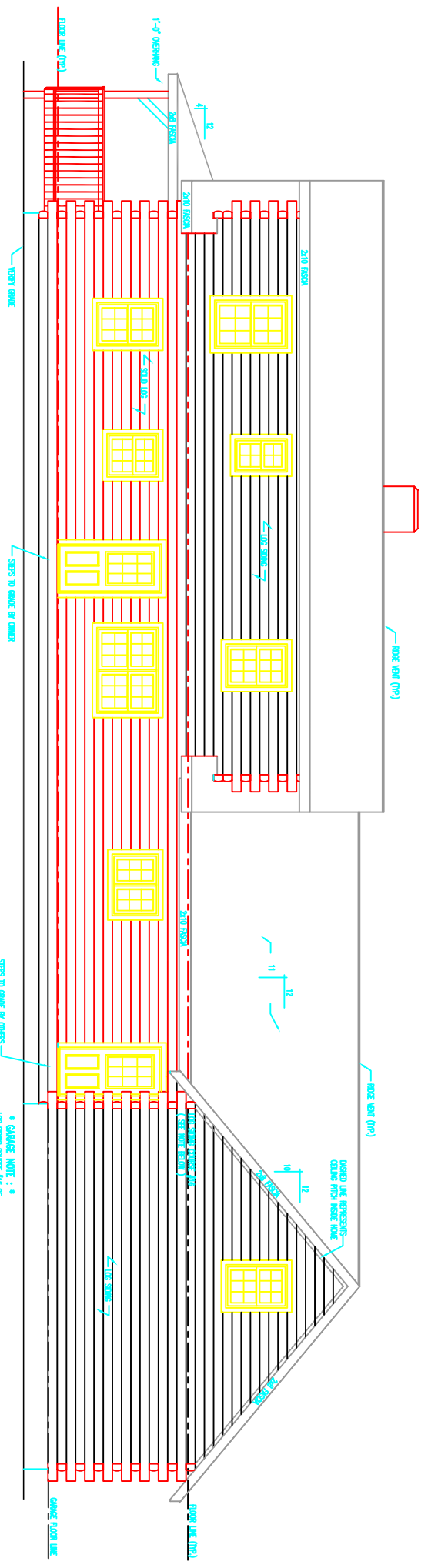
ROCK WOOL (R19)

ROCK WOOL (R19)

ROCK WOOL (R19)

ROCK WOOL (R19)

# REAR ELEVATION



\* CHANGE NOTE : \*  
 1. TO ADD FINISH LINE & REAR  
 AS LUD COURSE / HIS OF  
 MAIN HOUSE.

STEPS TO GARAGE BY OWNERS

STEPS TO GARAGE BY OWNERS

HEAVY GARAGE

DROPPED LINE REPRESENTS  
 CEILING FROM REAR PORCH

10' 12"

11' 12"

FINISH LINE TO GARAGE BY  
 SEE NOTE ABOVE

FINISH LINE (10')

2x4 FINISH

2x4 FINISH

2x4 FINISH

2x4 FINISH

2x4 FINISH

1-1/2\"/>

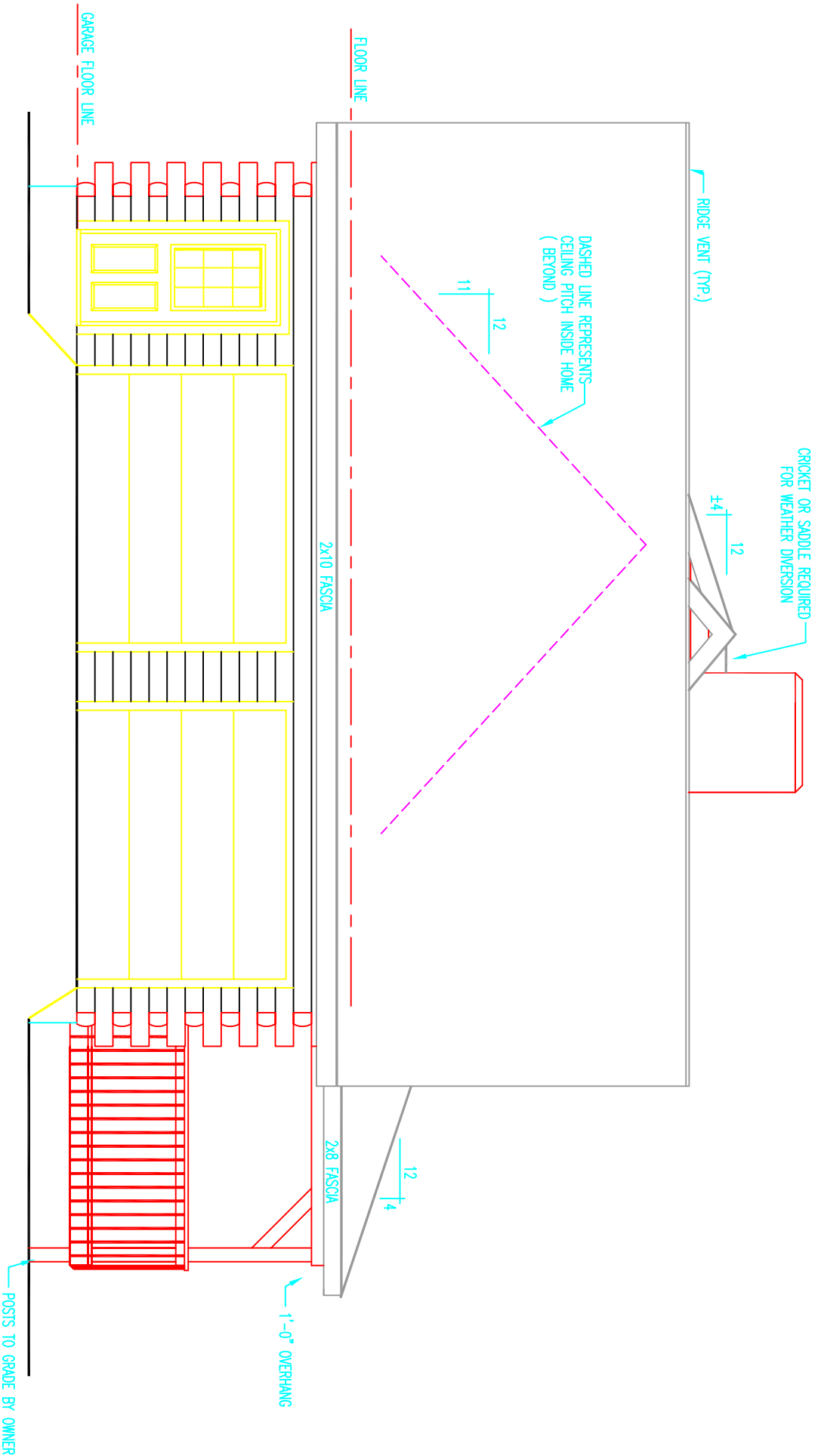
FLOOR LINE (10')

CHANGE FLOOR LINE

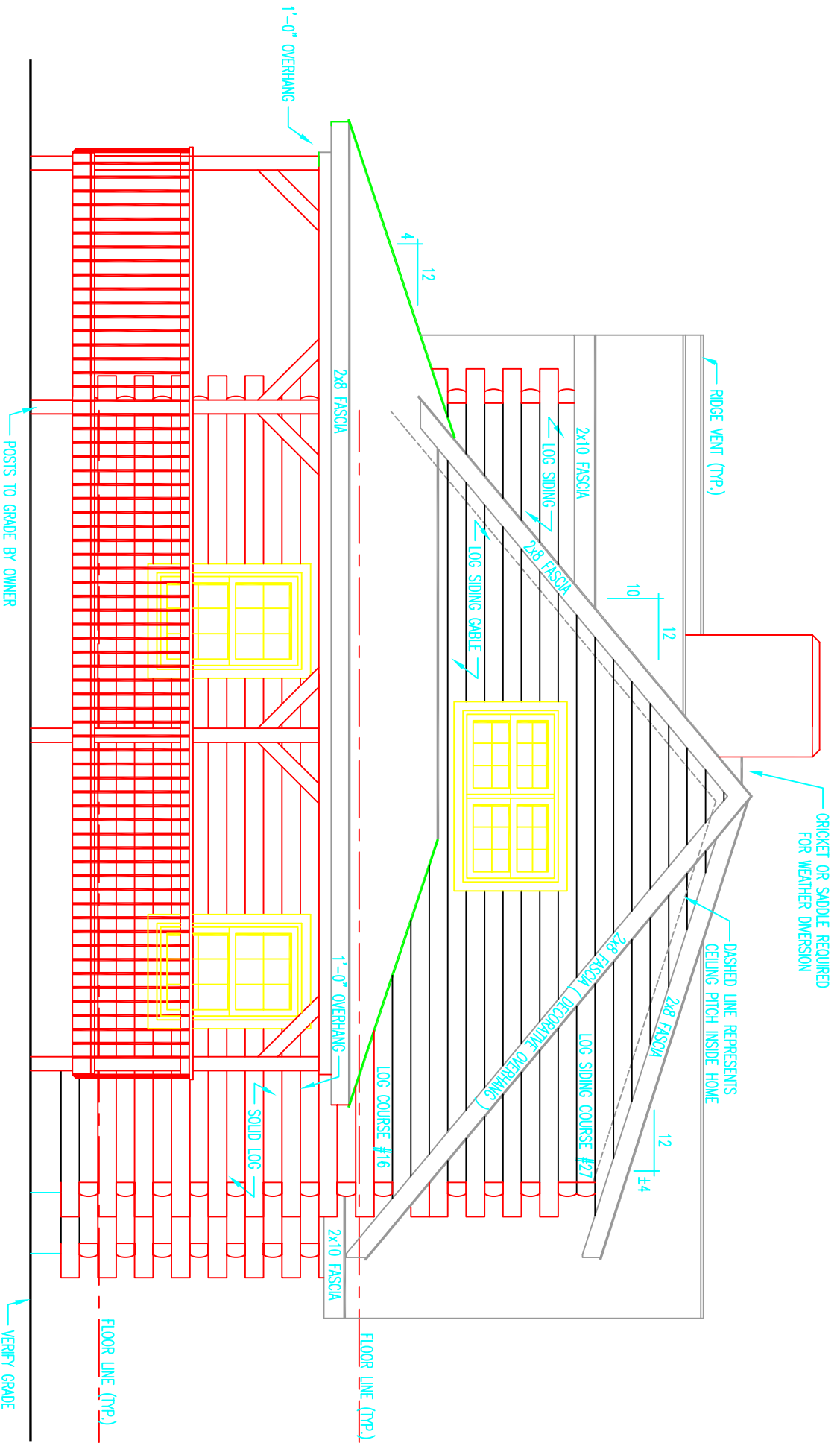
ROCK PORCH (10')

ROCK PORCH (10')

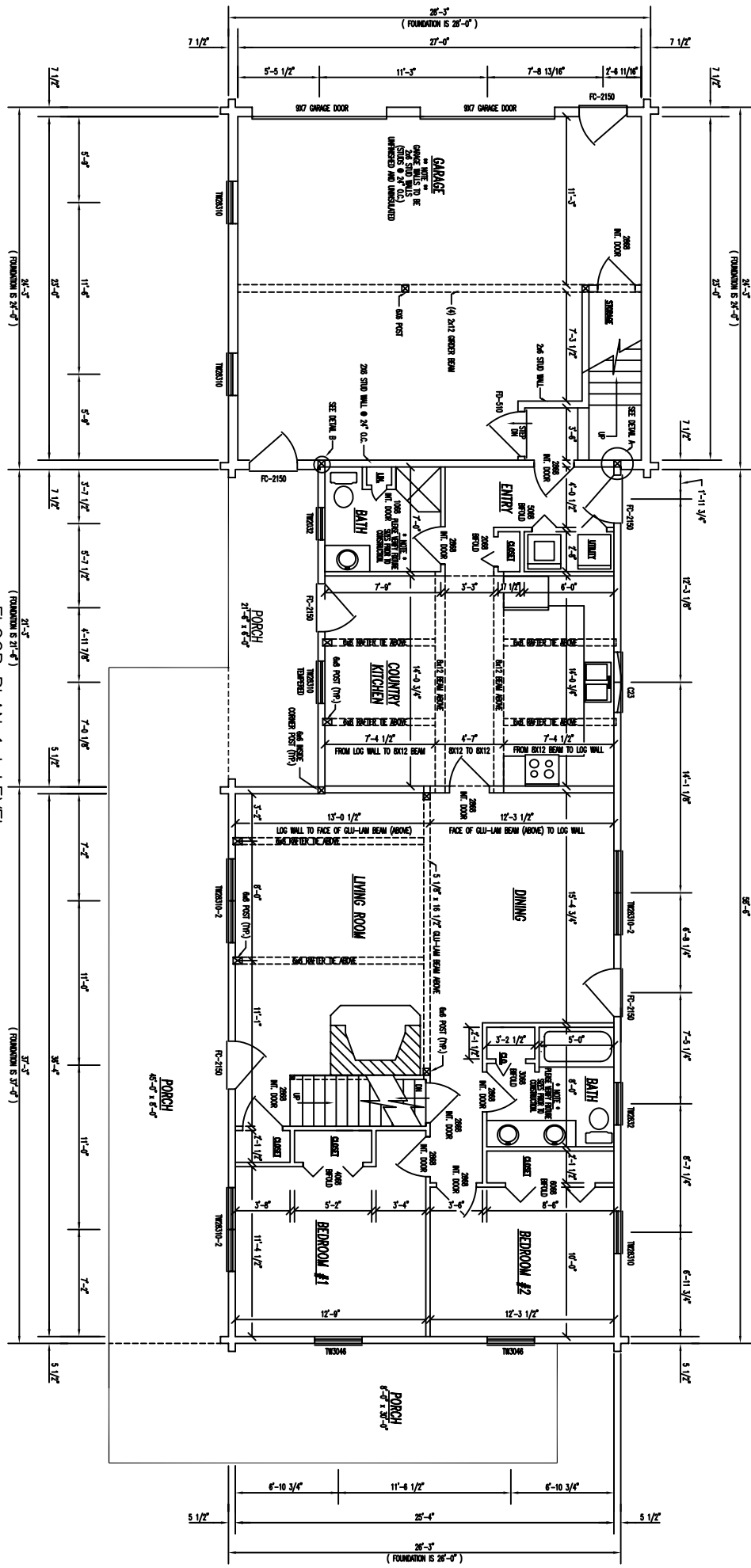
ROCK PORCH (10')



# LEFT ELEVATION

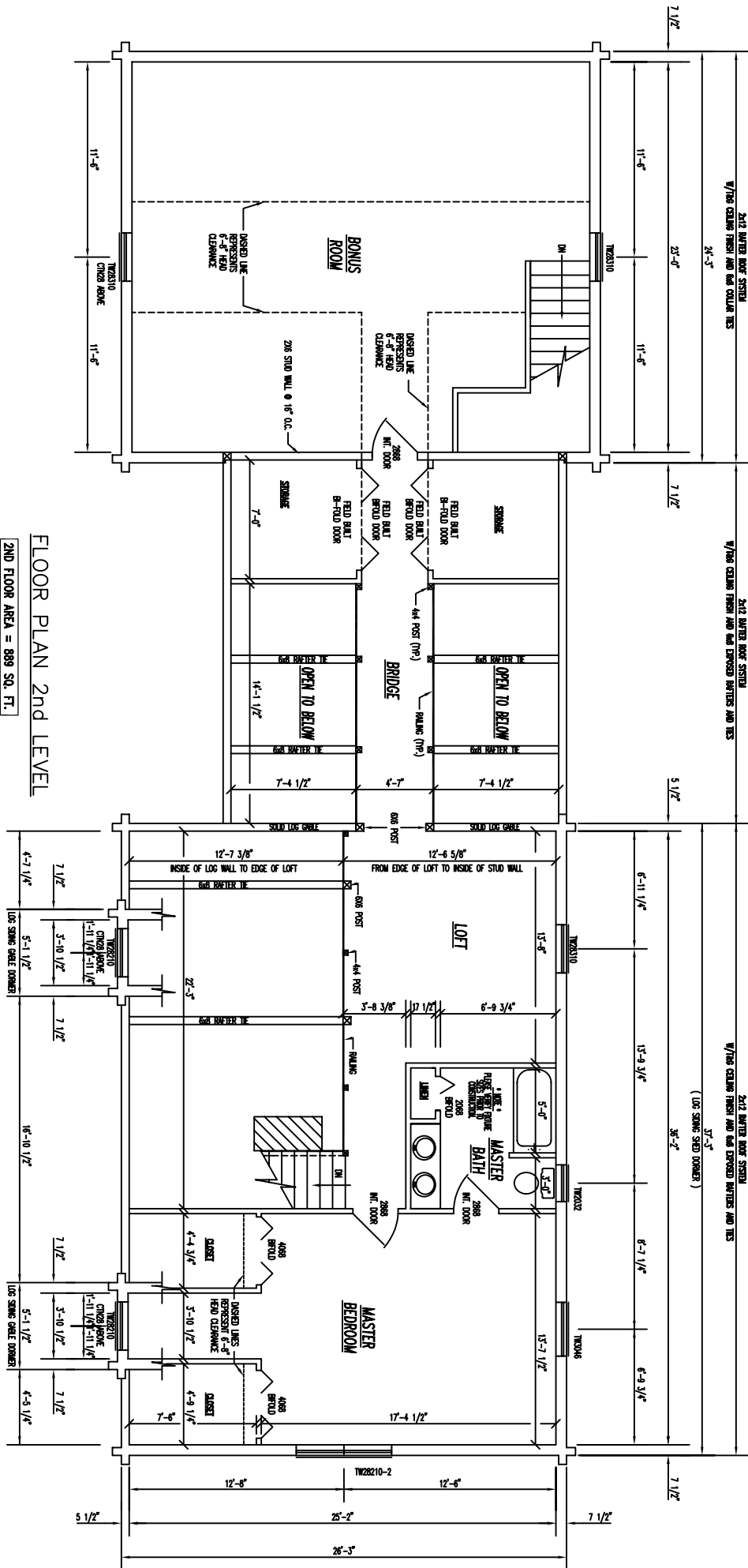


# RIGHT ELEVATION



FLOOR PLAN 1st LEVEL

- 1ST FLOOR AREA = 1402 SQ. FT.
- GARAGE FLOOR AREA = 682 SQ. FT.
- PORCH FLOOR AREA = 730 SQ. FT.



FLOOR PLAN 2nd LEVEL

2ND FLOOR AREA = 889 SQ. FT.

BONUS ROOM FLOOR AREA = 371 SQ. FT.