



**Kuhns Bros.**  
LOG HOMES INCORPORATED

# STANDARD BROOKSIDE

## FLOOR PLANS AND ELEVATIONS FOR 1998

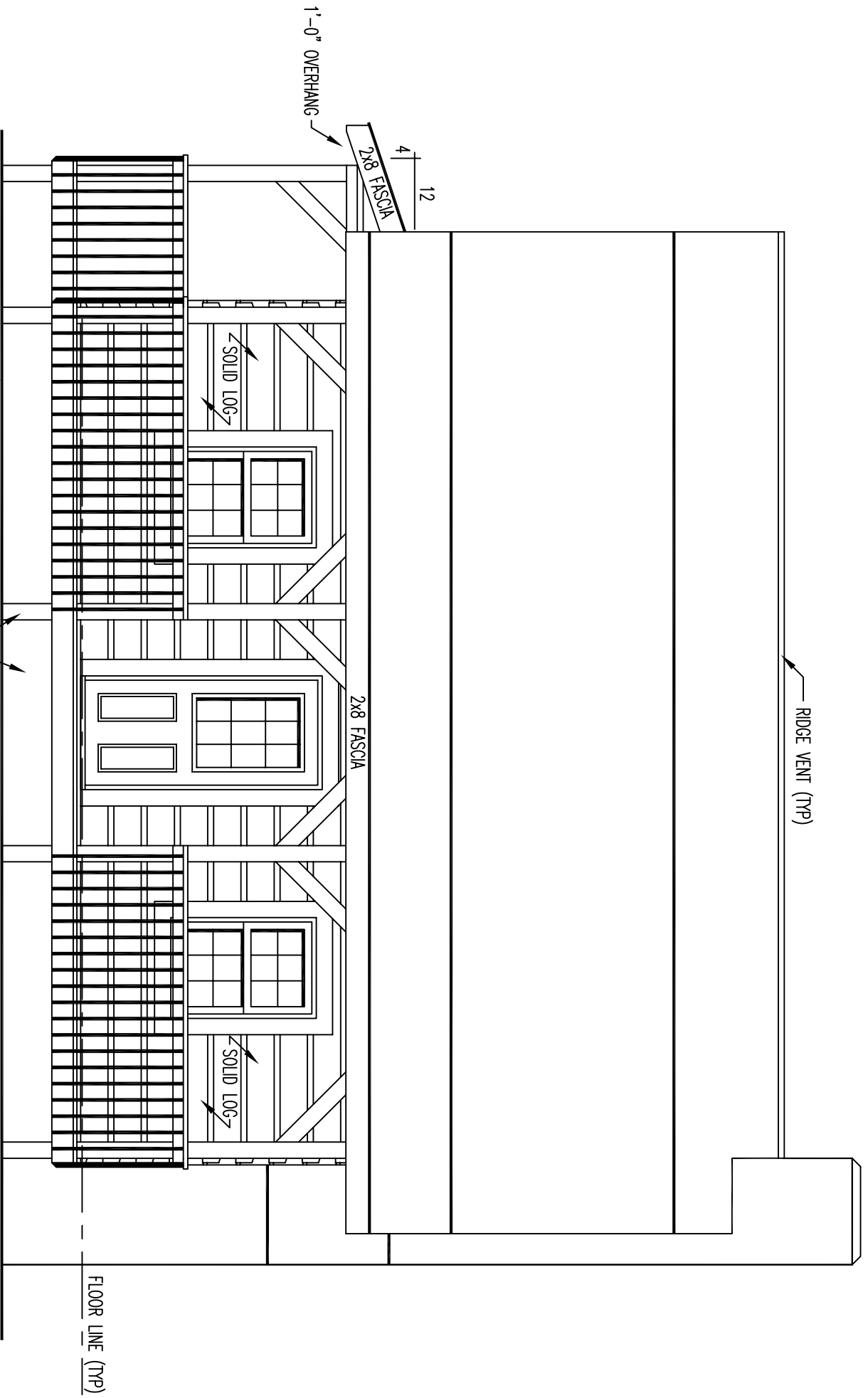


LOG PROFILE

### \*\* GENERAL NOTES \*\*

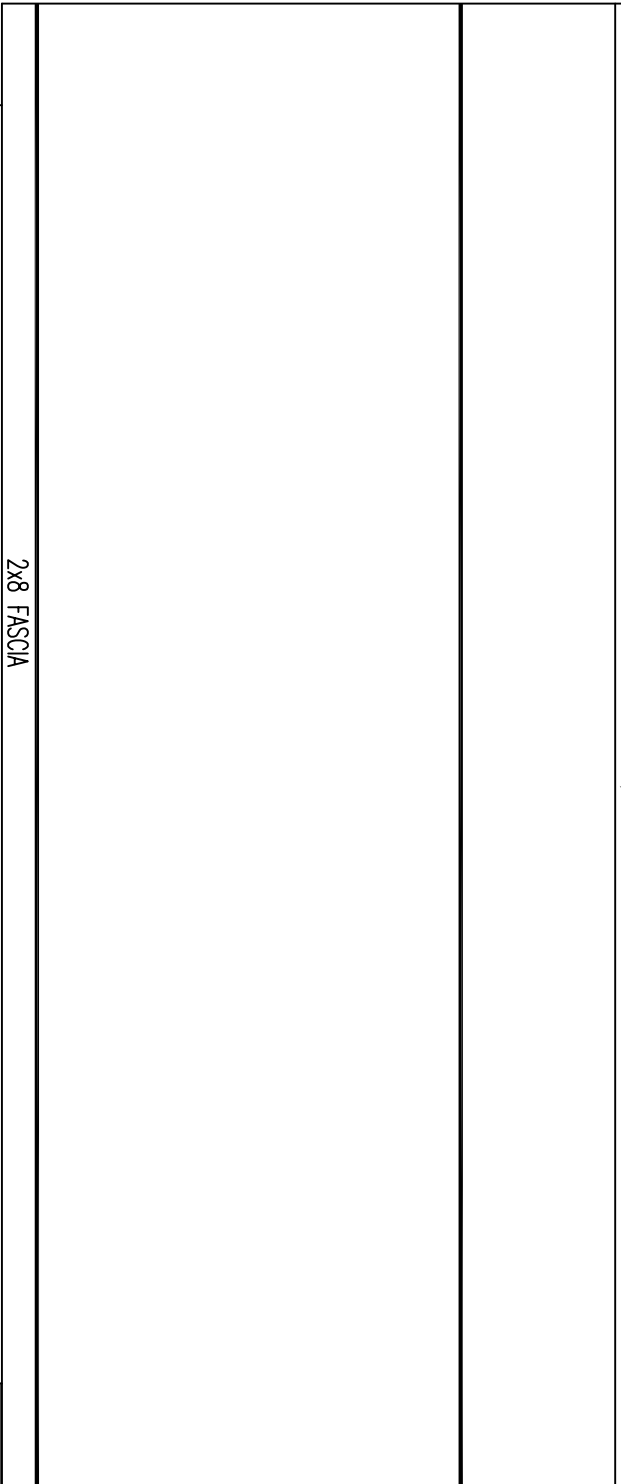
- 6 X 12 SINGLE TONGUE WHITE PINE UNCHINKED DOVETAIL LOGS
- 10 LOG COURSES TO SQUARE - AT ENTIRE HOUSE,
- ALL INTERIOR STUD WALLS TO BE 24" O.C. UNLESS NOTED,
- ALL EXTERIOR STUD WALLS TO BE 24" O.C. UNLESS NOTED,
- 2nd FLOOR JOISTS LOCATED IN 9th LOG COURSE,
- ALL PARTITION WALLS RUNNING TO THE TOP OF THE 9th LOG COURSE WILL REQUIRE A DOUBLE TOP AND BOTTOM PLATE,
- STEPS AND POSTS TO GRADE BY OWNER / OTHERS,
- 1 3/4" X 3 1/2" EXTERIOR TRIM MATERIAL SHOWN AT ALL DOORS AND WINDOWS UNLESS NOTED,
- ALL OVERHANGS APPROX. 2'-0" UNLESS NOTED,
- ROOF SYSTEM DESIGNED FOR 40 lb. SNOW LOAD,
- WINDOW GRILLE PATTERNS SHOWN ARE FOR ILLUSTRATION ONLY, ACTUAL PATTERNS MAY VARY,
- VERIFY GRADE ON SITE,
- NO LOG SIPING TO BE PROVIDED BELOW PORCH AREA,

576 SQ. FT. FIRST FLOOR	145 SQ. FT. PORCH
522 SQ. FT. SECOND FLOOR	



FRONT ELEVATION

← RIDGE VENT (TYP)



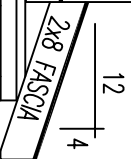
2x8 FASCIA

← SOLID LOG

FLOOR LINE (TYP)

← VERIFY GRADE

# REAR ELEVATION

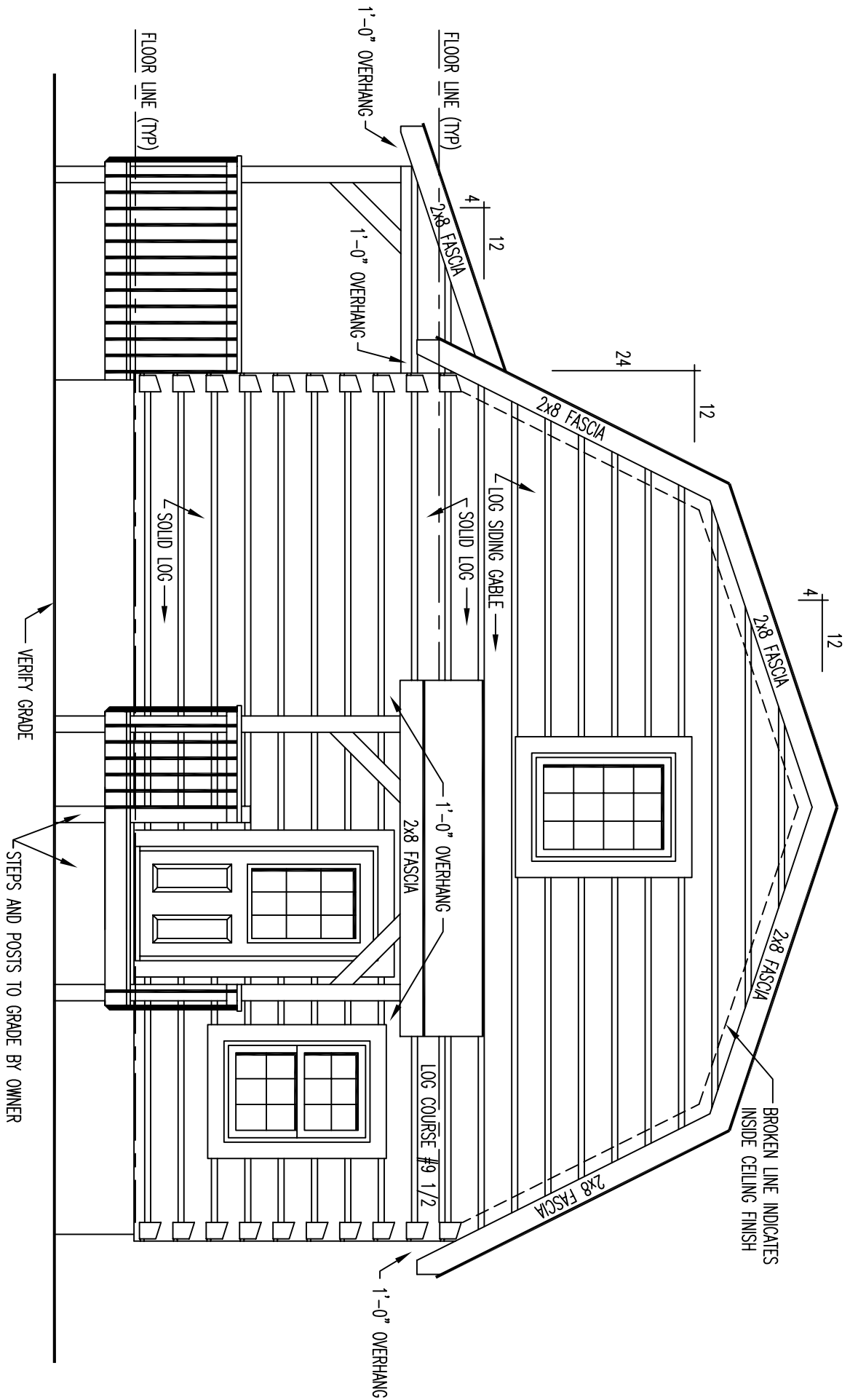


2x8 FASCIA

12

4

1'-0" OVERHANG



LEFT ELEVATION

BROKEN LINE INDICATES  
INSIDE CEILING FINISH

LOG COURSE #9 1/2

1'-0" OVERHANG  
2x8 FASCIA

1'-0" OVERHANG  
2x8 FASCIA

1'-0" OVERHANG  
2x8 FASCIA

FLOOR LINE (TYP)

FLOOR LINE (TYP)

VERIFY GRADE

STEPS AND POSTS TO GRADE BY OWNER

SOLID LOG

SOLID LOG

LOG SIDING GABLE

24

12

12

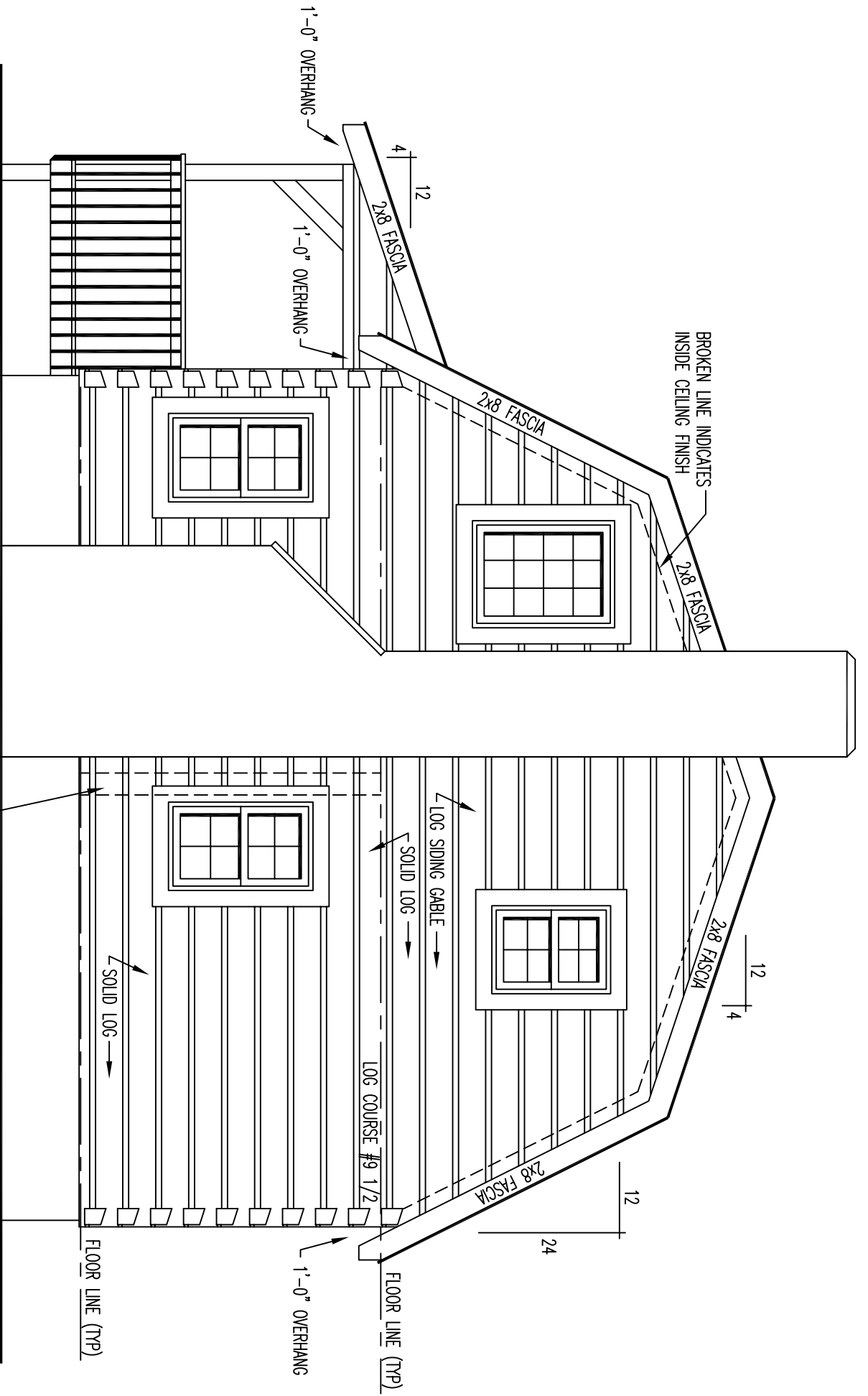
4

2x8 FASCIA

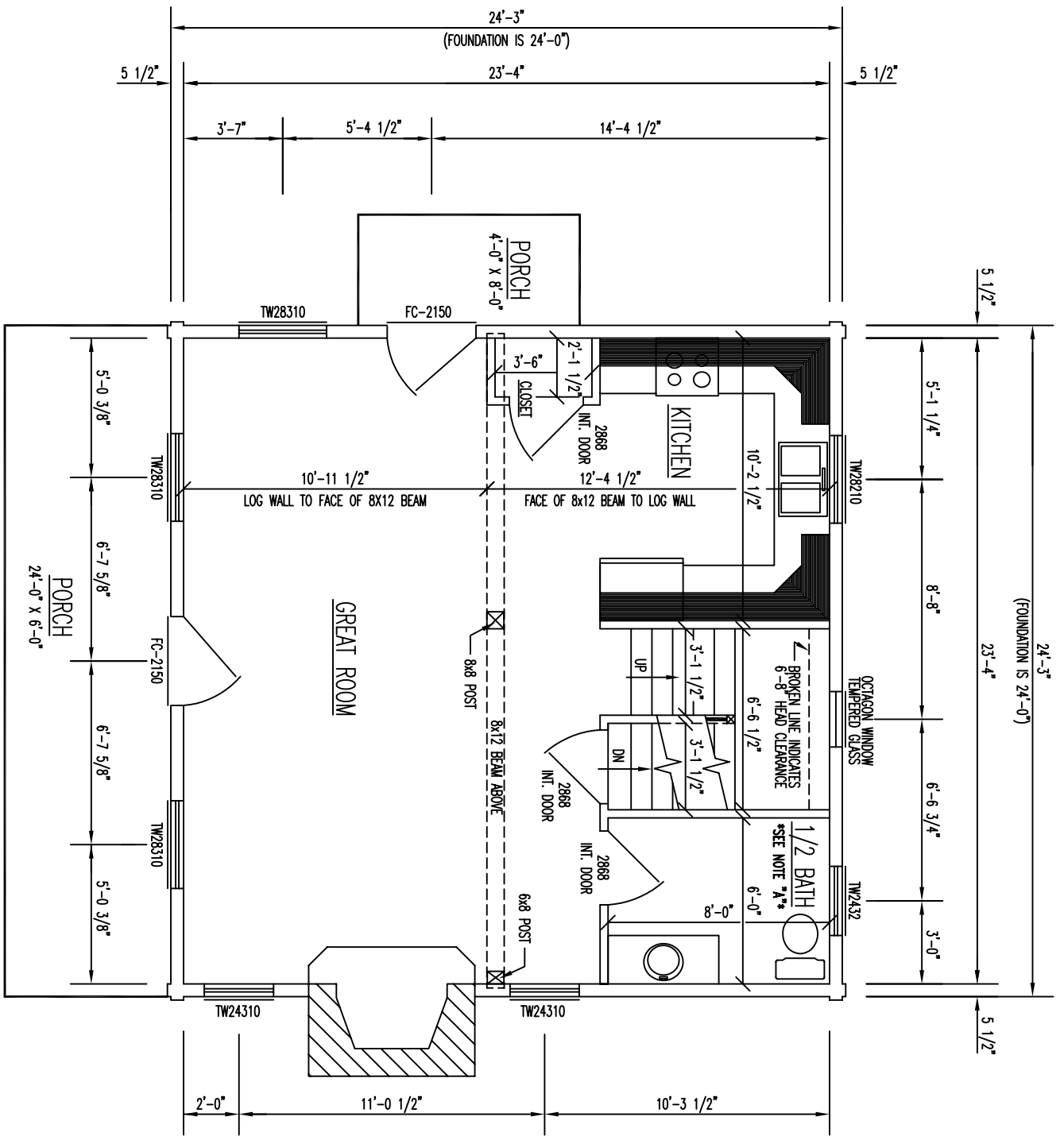
2x8 FASCIA

2x8 FASCIA

1'-0" OVERHANG



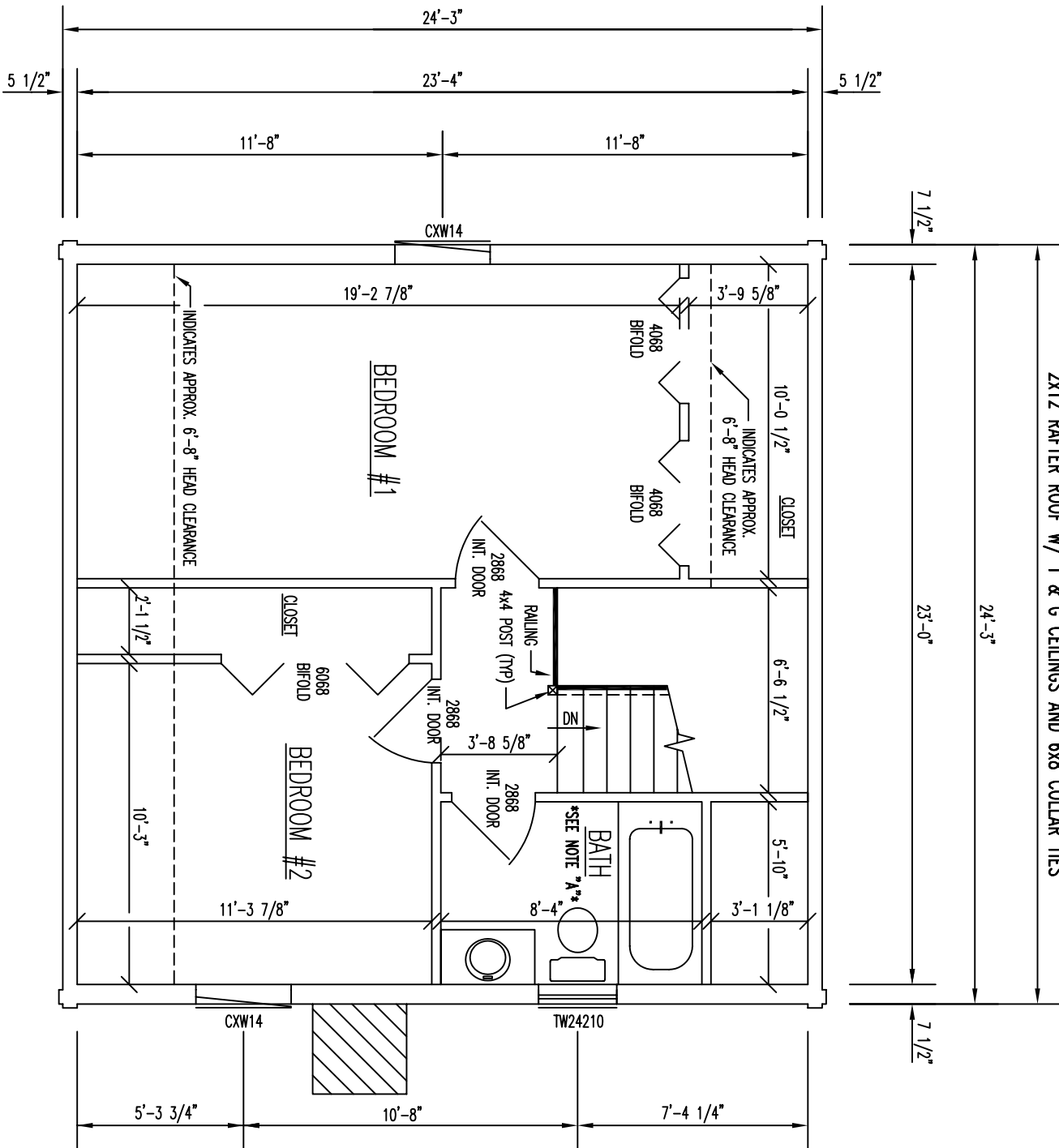
RIGHT ELEVATION



# FLOOR PLAN 1st LEVEL

FLOOR AREA = 576 SQ. FT.

2x12 RAFTER ROOF W/ T & G CEILINGS AND 6x8 COLLAR TIES



# FLOOR PLAN 2nd LEVEL

FLOOR AREA = 522 SQ. FT.