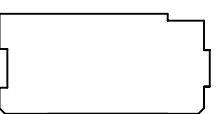


# STANDARD BRANDYWINE

## FLOOR PLANS AND ELEVATIONS FOR 1998

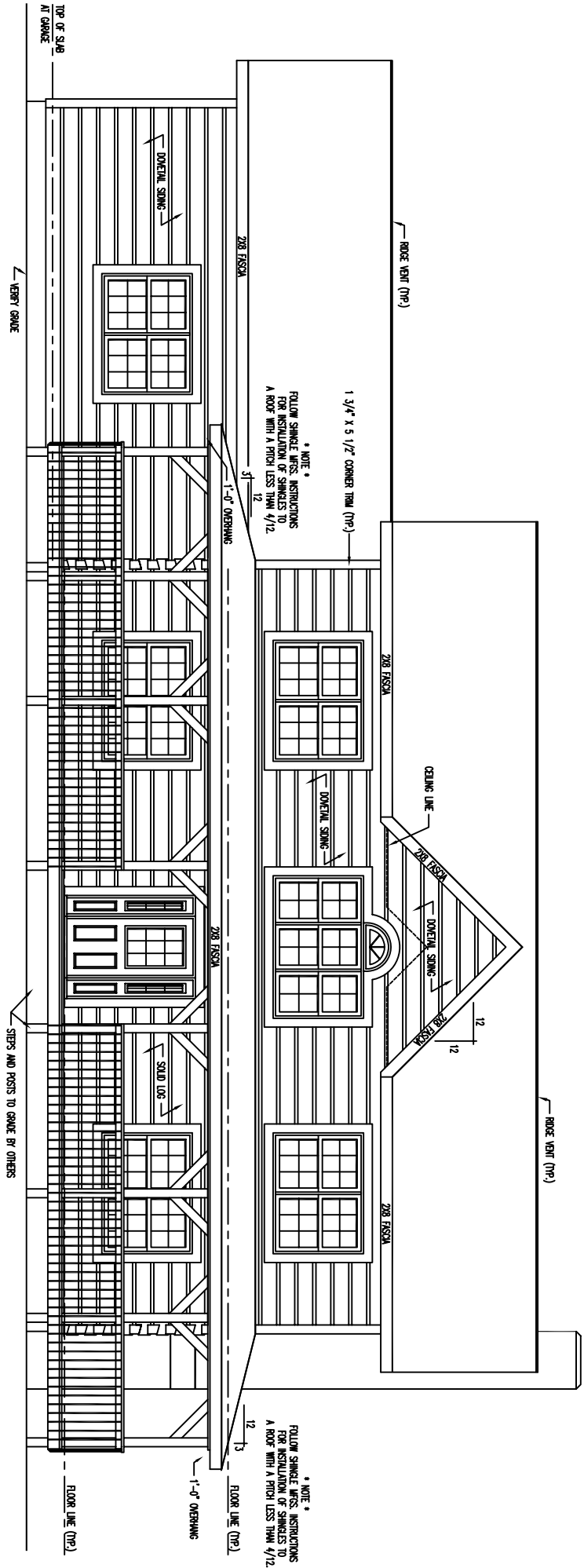


LOG PROFILE

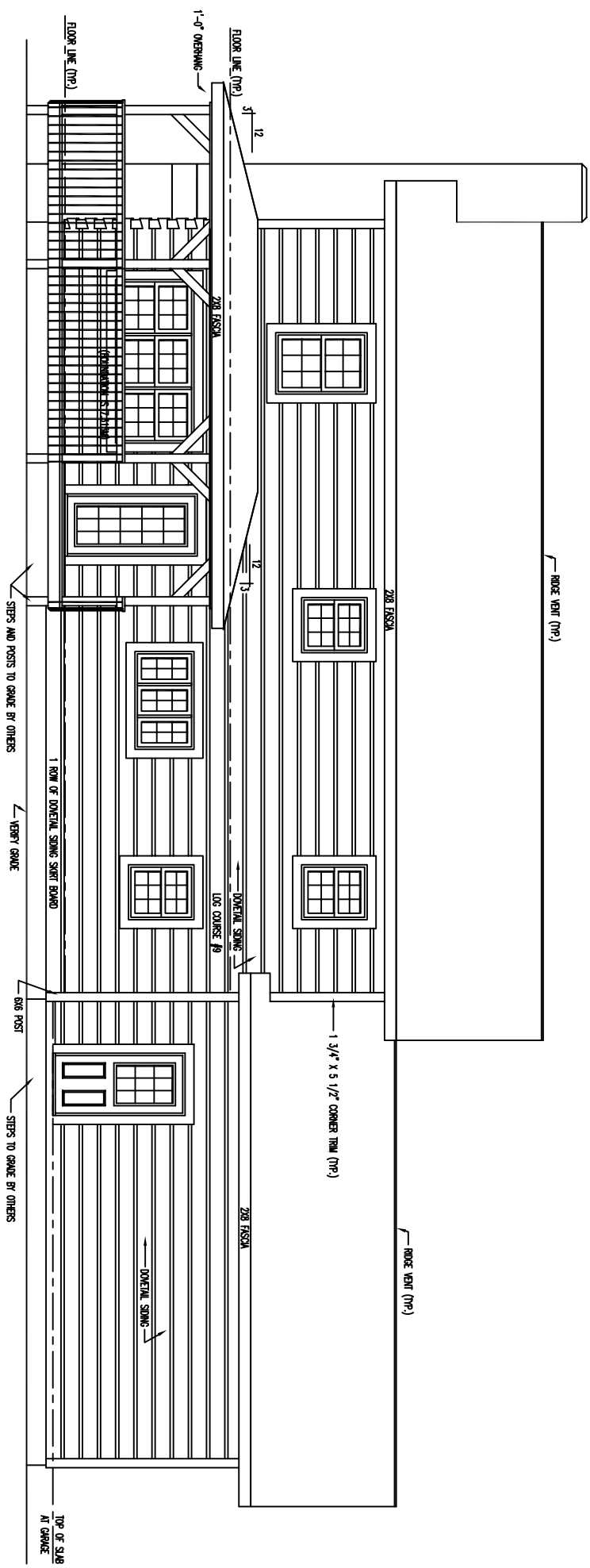
### \*\* GENERAL NOTES \*\*

- 6 X 12 SINGLE TONGUE, WHITE PINE, UNCHINKED DOVE-TAIL LOGS.
- 9 LOG COURSES TO SQUARE (1st LEVEL) - AT MAIN HOUSE.
- 9 SIPING COURSES TO SQUARE (2nd LEVEL) - AT MAIN HOUSE.  
(18 COURSES TO SQUARE - AT MAIN HOUSE.)
- 11 SIPING COURSES TO SQUARE - AT GARAGE.
- ALL INTERIOR STUP WALLS TO BE 24" O.C. UNLESS NOTED.
- ALL EXTERIOR STUP WALLS TO BE 24" O.C. UNLESS NOTED.
- 2nd FLOOR JOISTS LOCATED IN 9th LOG COURSE.
- STEPS AND POSTS TO GRADE BY OWNER / OTHERS.
- 1 3/4" X 5 1/2" EXTERIOR TRIM MATERIAL SHOWN AT ALL DOORS AND WINDOWS UNLESS NOTED.
- ALL OVERHANGS APPROX. 2'-0" UNLESS NOTED.
- ROOF SYSTEM DESIGNED FOR 40 lb. SNOW LOAD.
- WINDOW GRILLE PATTERNS SHOWN ARE FOR ILLUSTRATION ONLY, ACTUAL PATTERNS MAY VARY.
- VERIFY GRADE ON SITE.
- NO LOG SIPING TO BE PROVIDED BELOW PORCH AREAS.

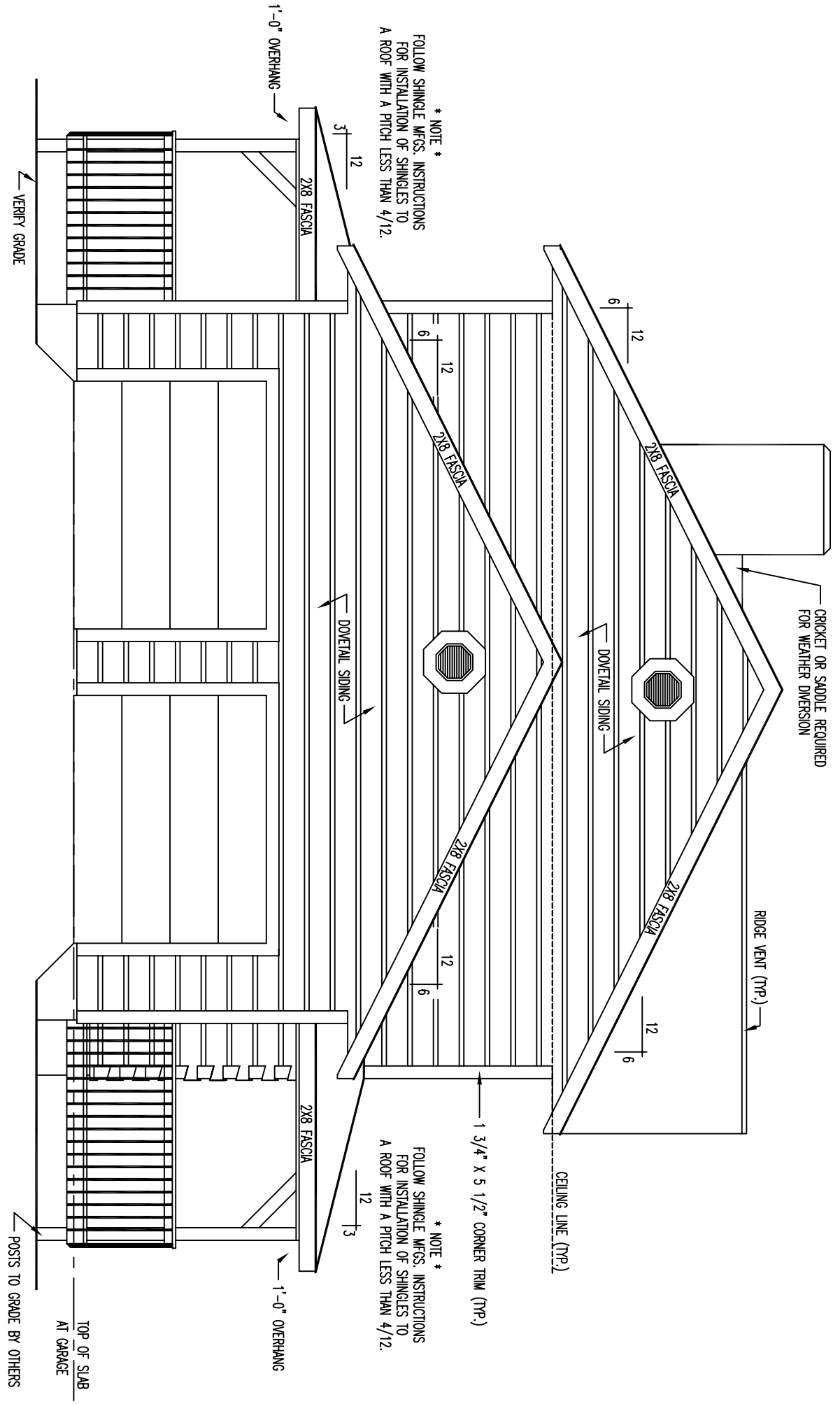
1120 SQ. FT. FIRST FLOOR	648 SQ. FT. PORCH
1091 SQ. FT. SECOND FLOOR	624 SQ. FT. GARAGE



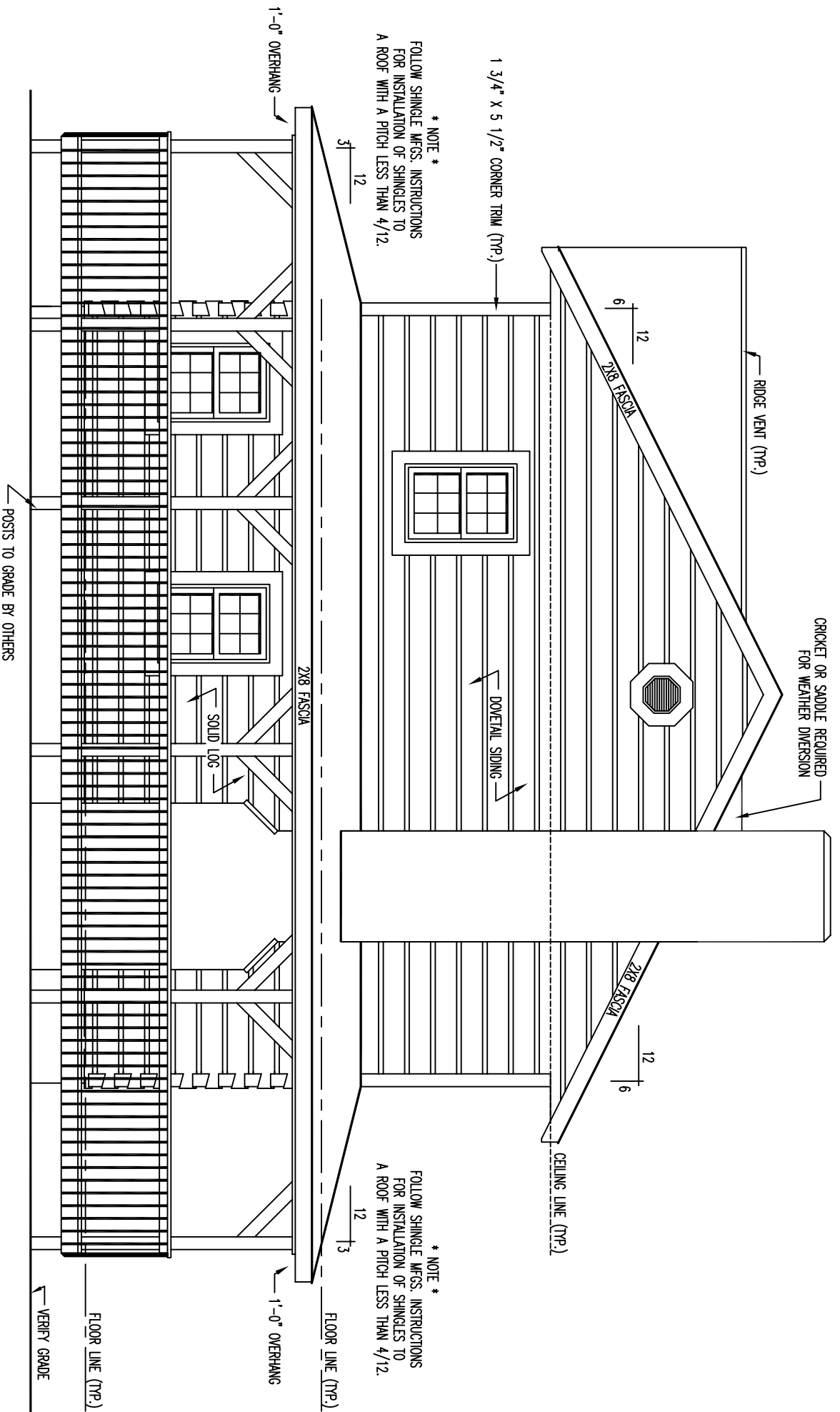
FRONT ELEVATION



REAR ELEVATION



LEFT ELEVATION

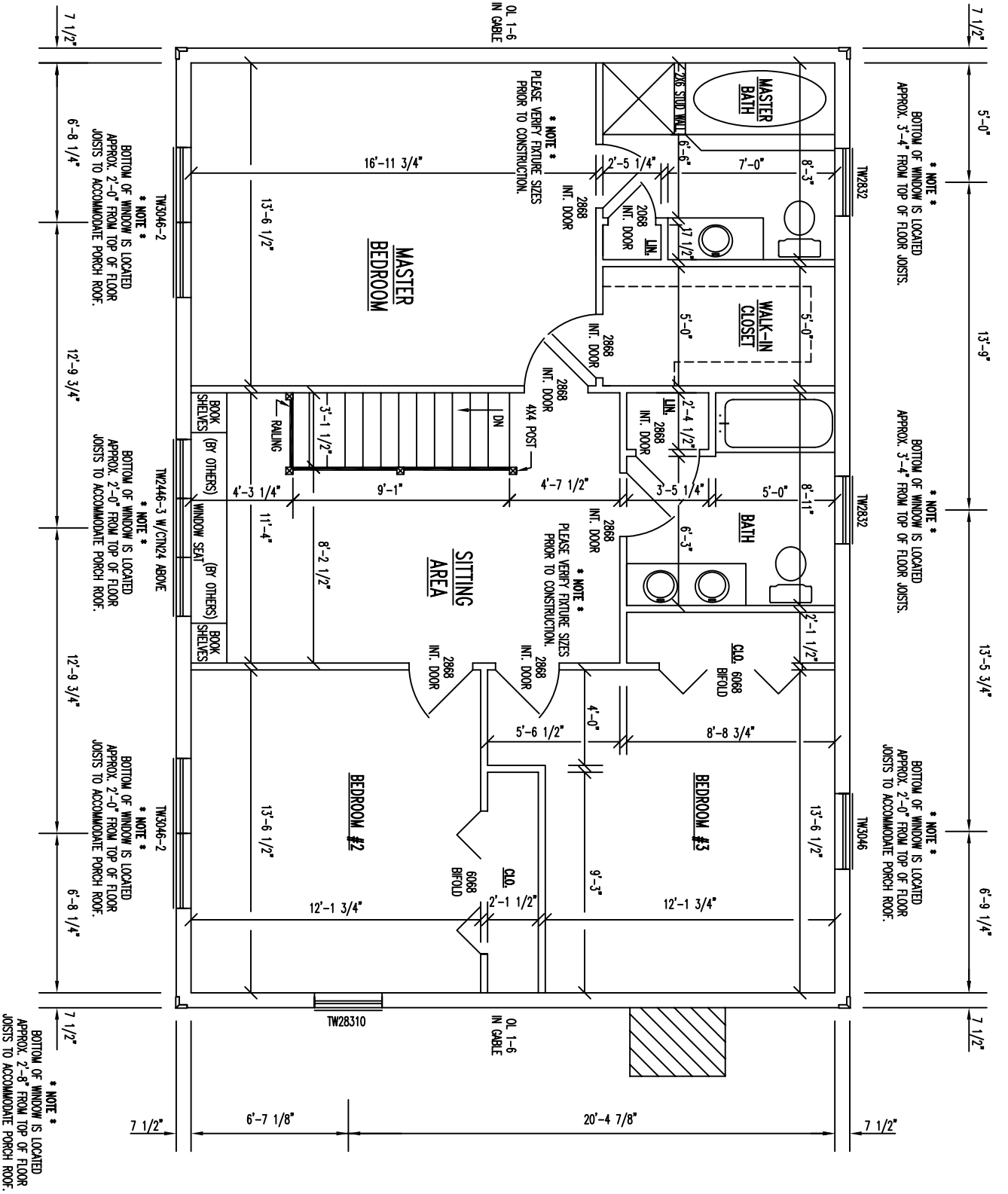


\* NOTE \*  
 FOLLOW SHINGLE MFGS. INSTRUCTIONS  
 FOR INSTALLATION OF SHINGLES TO  
 A ROOF WITH A PITCH LESS THAN 4/12.

\* NOTE \*  
 FOLLOW SHINGLE MFGS. INSTRUCTIONS  
 FOR INSTALLATION OF SHINGLES TO  
 A ROOF WITH A PITCH LESS THAN 4/12.

RIGHT ELEVATION





# 2nd LEVEL FLOOR PLAN

FLOOR AREA = 1991 SQ. FT.