

FRONT ELEVATION

SEES AND POSTS TO BE IN CORNER

1. NOTE: - REFER TO MANUFACTURER'S INSTRUCTIONS TO APPLY SHIMS TO A ROOF WITH LESS THAN A 4/12 PITCH

2. 1 3/4"

SIDE HEIGHT (TP)

SIDE HEIGHT (TP)

ROOF LINE (TP)

ROOF LINE (TP)

ROOF LINE (TP)

FLOOR LINE (TP)

FLOOR LINE (TP)

FLOOR LINE (TP)

FLOOR LINE (TP)

FLOOR LINE (TP)

FLOOR LINE (TP)

HEAVY GRADE

6' OVERHANG

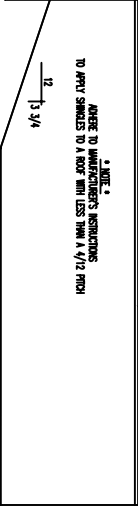
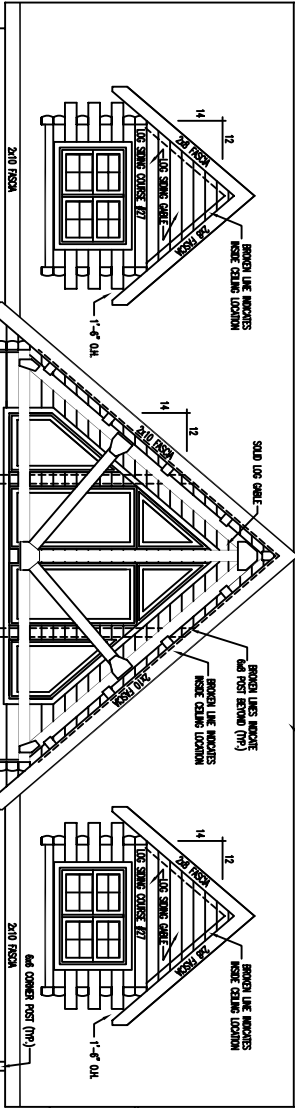
LOG SHIMS

LOG SHIMS WITH BOND

LOG SHIMS

LOG SHIMS

LOG SHIMS



2x10 PITCH

2x10 PITCH

2x10 PITCH

2x10 PITCH

2x8 PITCH

2x8 PITCH

SOLID LOG

SOLID LOG

SOLID LOG

SOLID LOG

SOLID LOG

SOLID LOG

LOG SHIMS WITH BOND

LOG SHIMS WITH BOND

LOG SHIMS WITH BOND

LOG SHIMS WITH BOND

LOG SHIMS WITH BOND

LOG SHIMS WITH BOND

1-4" O.D.

1-4" O.D.

1-4" O.D.

12

14

12

14

12

14

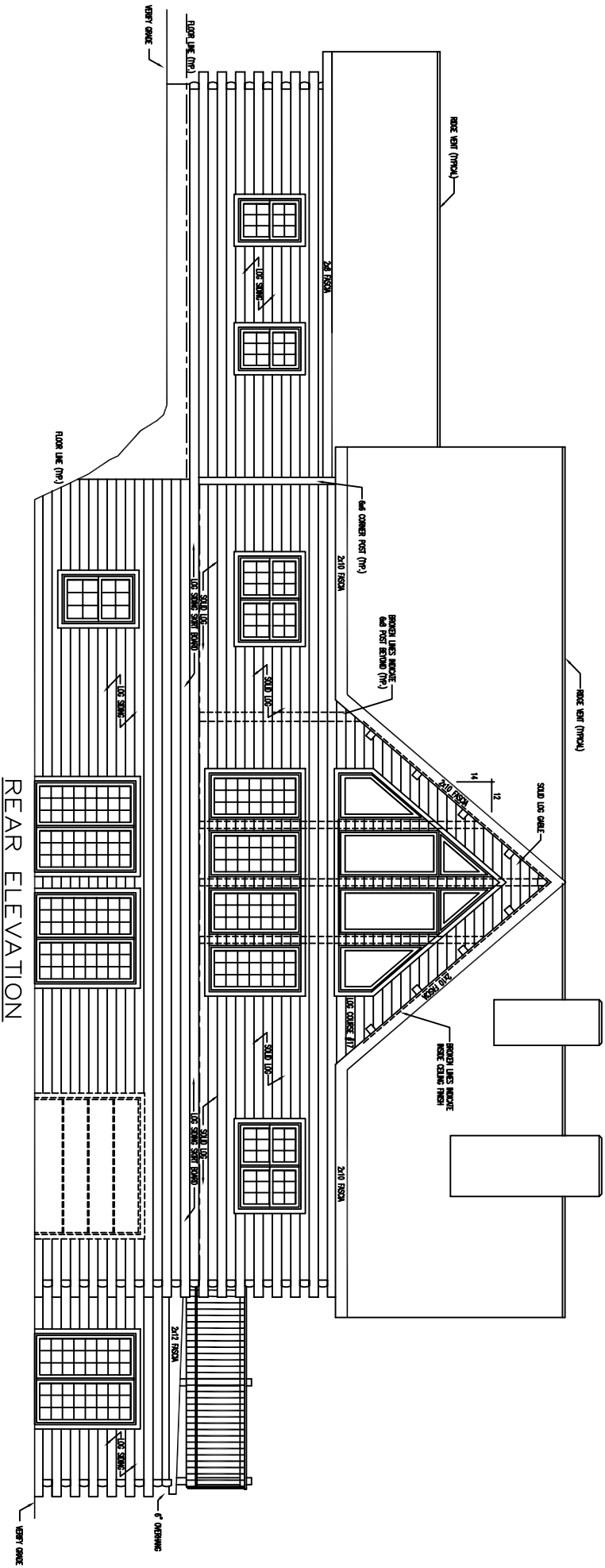
12

14

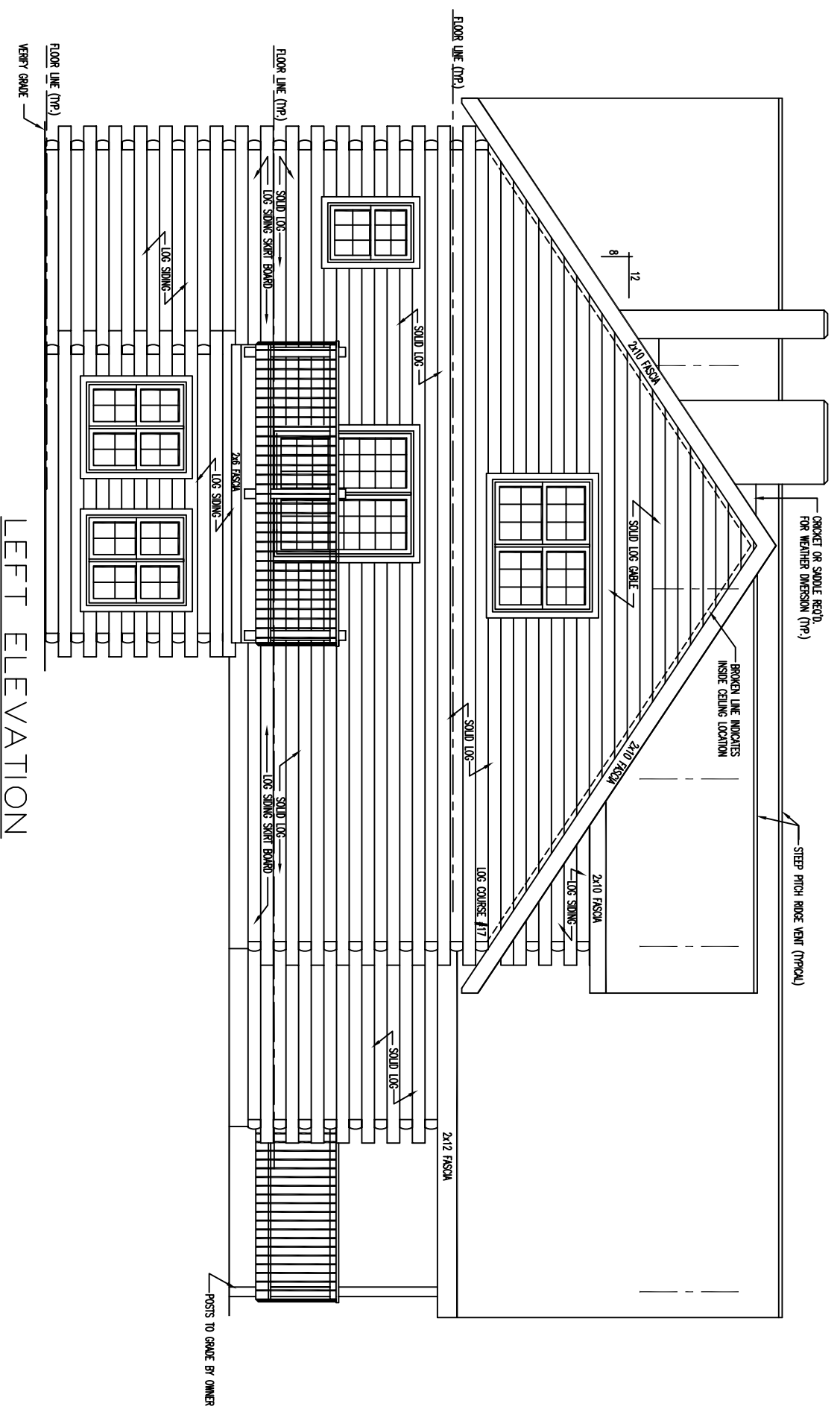
12

14

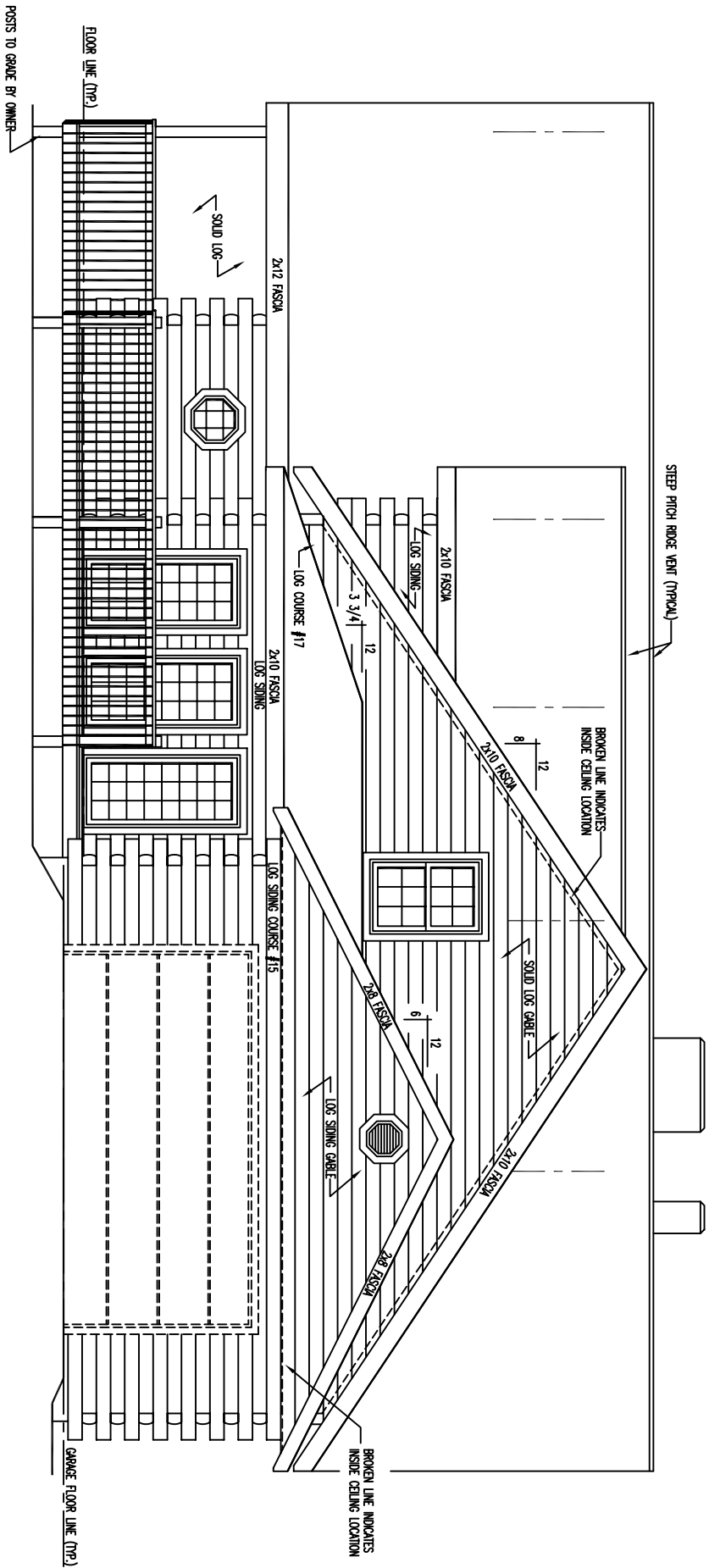
12



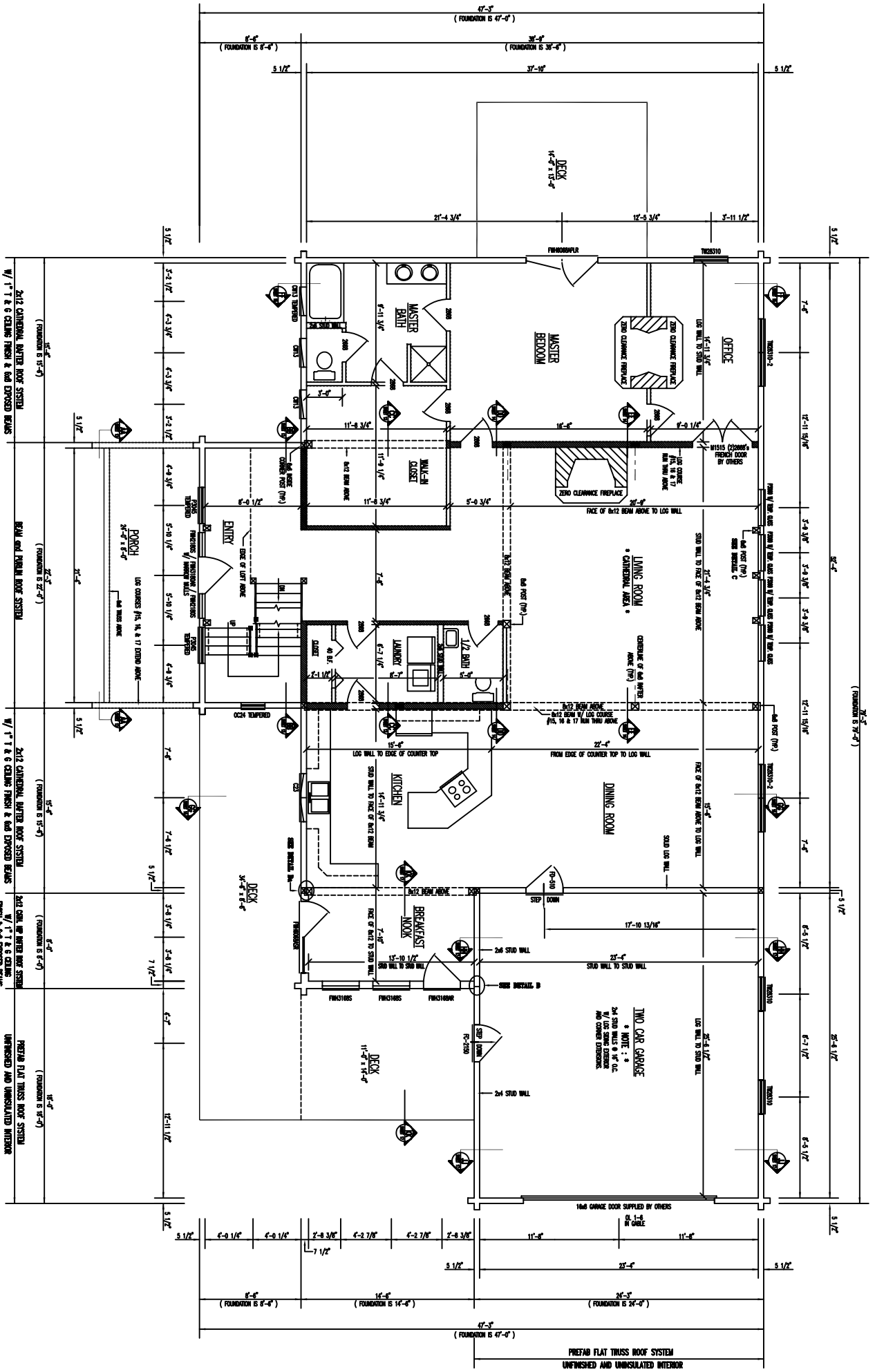
REAR ELEVATION



LEFT ELEVATION



RIGHT ELEVATION



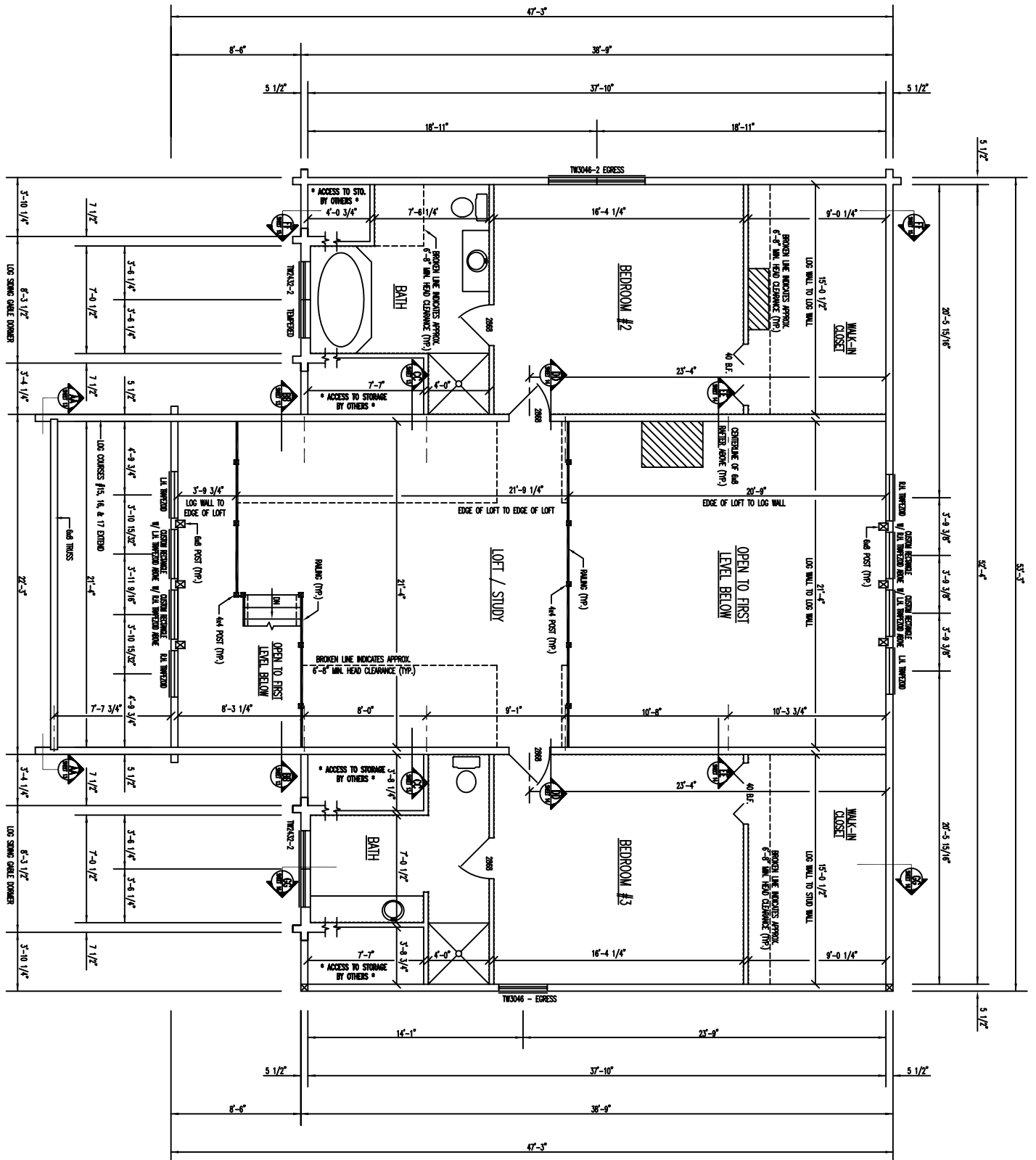
### FLOOR PLAN 1ST LEVEL

1st FLOOR AREA = 2,344 SQ. FT.  
GARAGE AREA = 824 SQ. FT.

▨ - INDICATES BEARING WALLS @ 16" O.C.

2x12 CENTRAL HATCH ROOF SYSTEM  
2x4 STUD WALLS & 1/2" G.I.C. NO COVER CEILING  
PREFAB FLAT TRUSS ROOF SYSTEM  
UNFINISHED AND UNINSULATED INTERIOR

PREFAB FLAT TRUSS ROOF SYSTEM  
UNFINISHED AND UNINSULATED INTERIOR



FLOOR PLAN 2ND LEVEL

2ND FLOOR AREA = 2,032 SQ. FT.