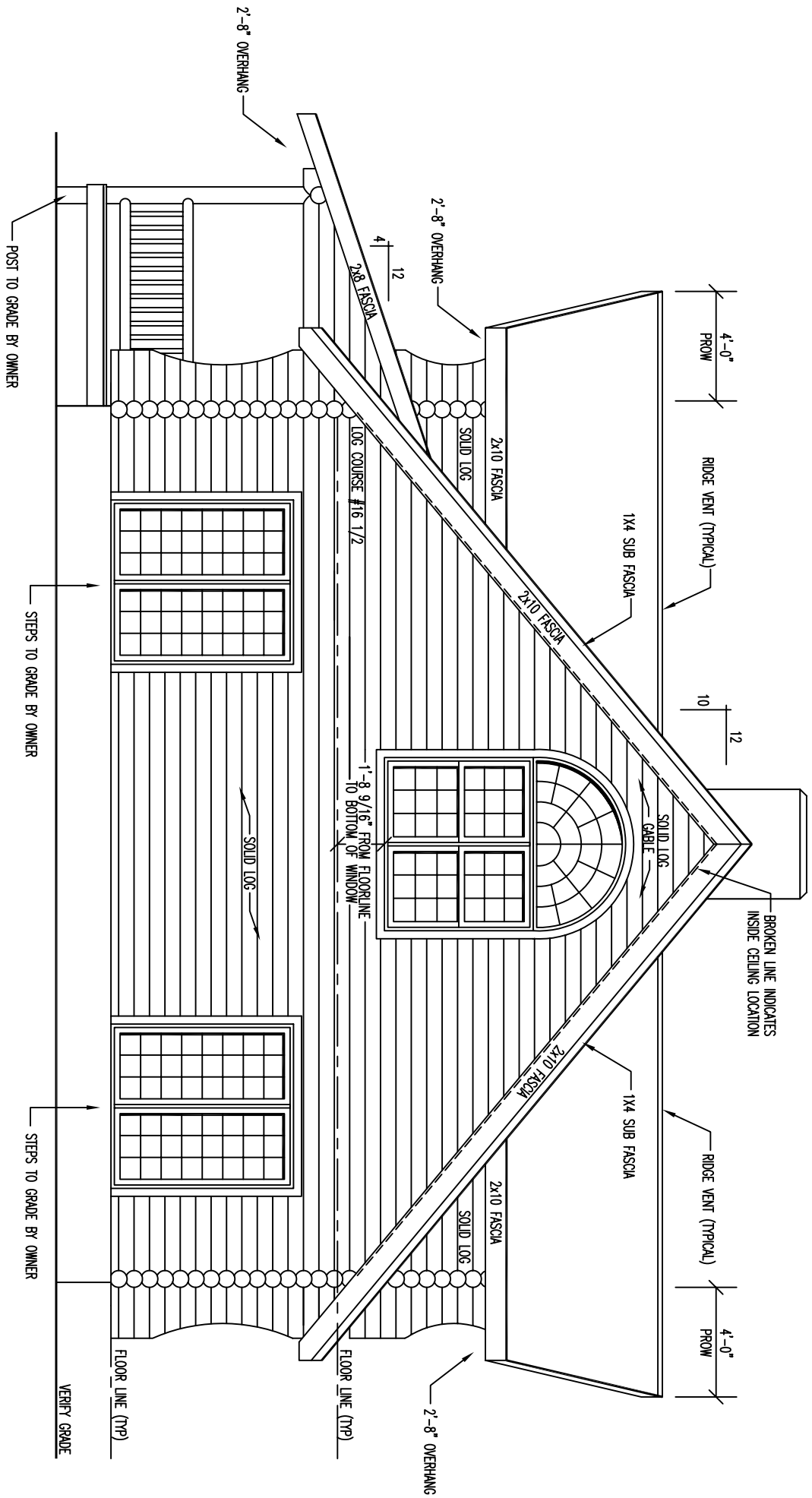
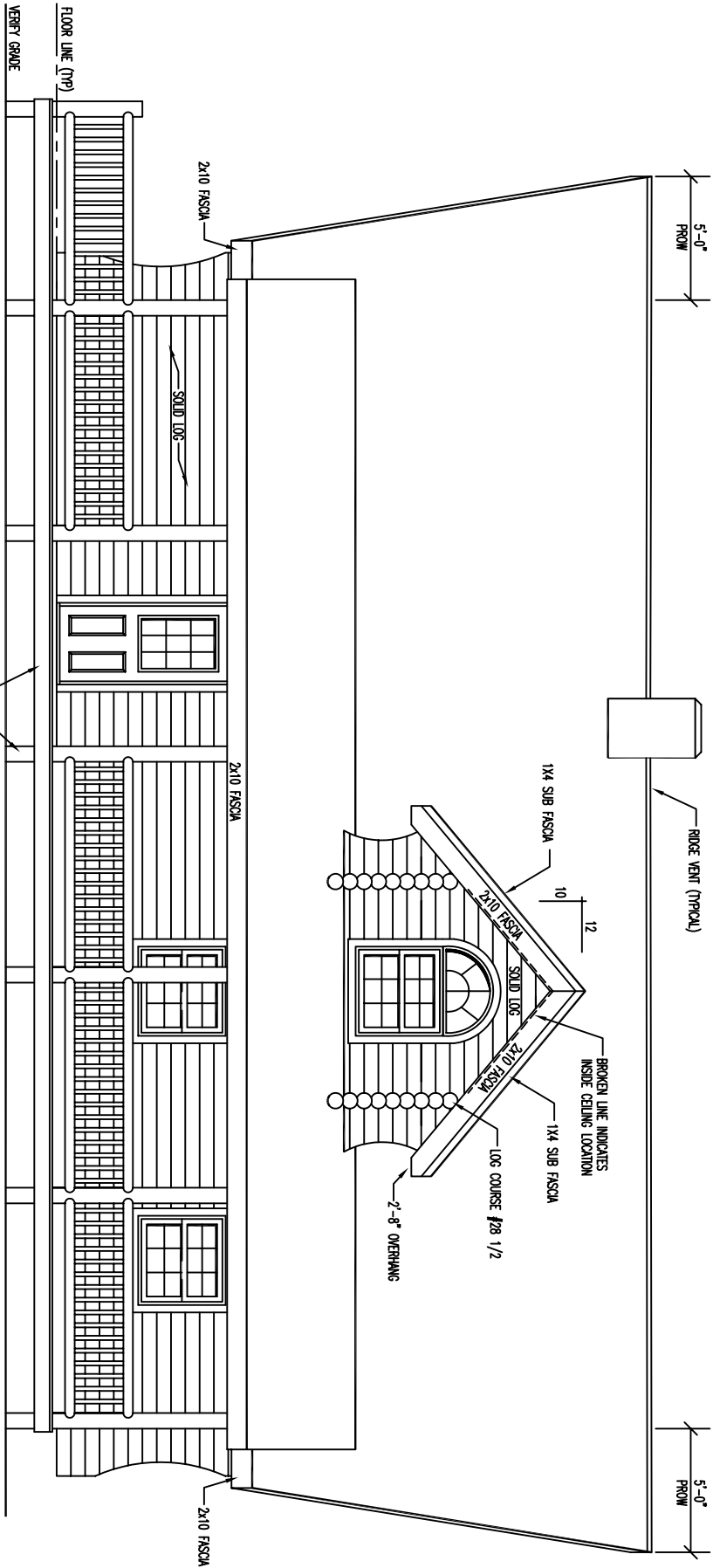


FRONT ELEVATION

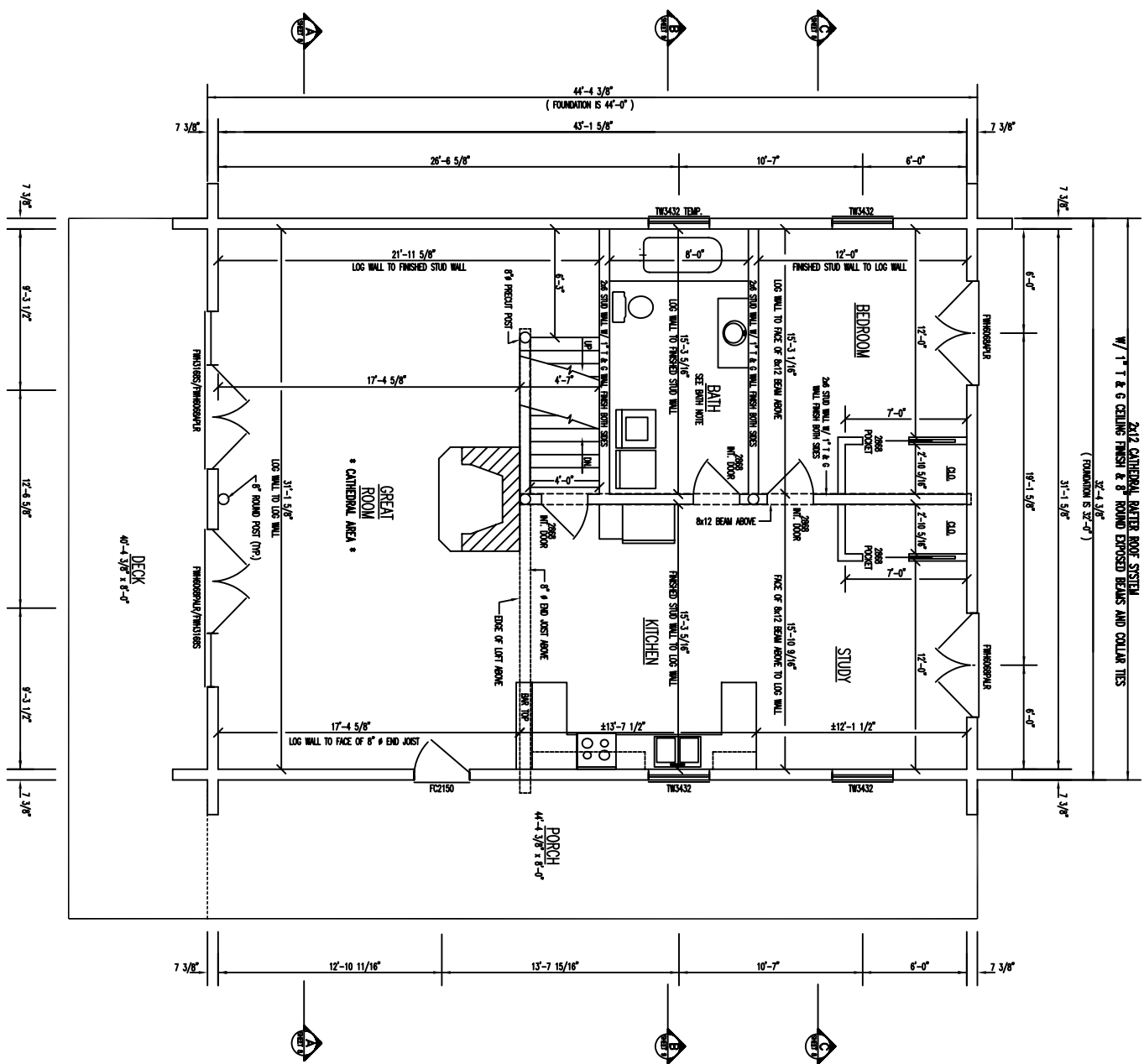
# REAR ELEVATION







RIGHT ELEVATION



2x12 GATHERED, BATTER ROOF SYSTEM  
 w/ 1" T & G CEILING FINISH & 8" ROUND EXPOSED BEAMS AND COLLAR TIES  
 (FOUNDATION IS 32'-0")  
 31'-1 5/8"

FLOOR PLAN 1st LEVEL  
 FLOOR AREA = 1408 SQ. FT.

FLOOR PLAN 2nd LEVEL  
 FLOOR AREA = 798 SQ. FT.

