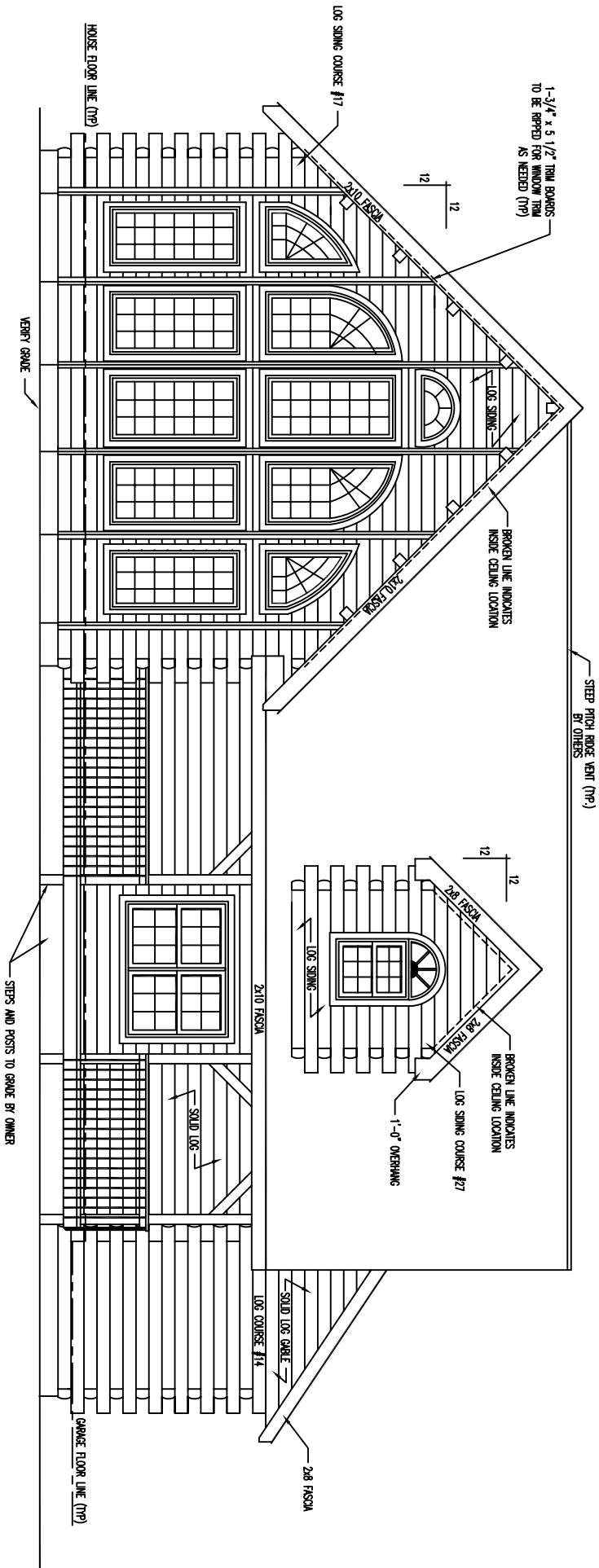
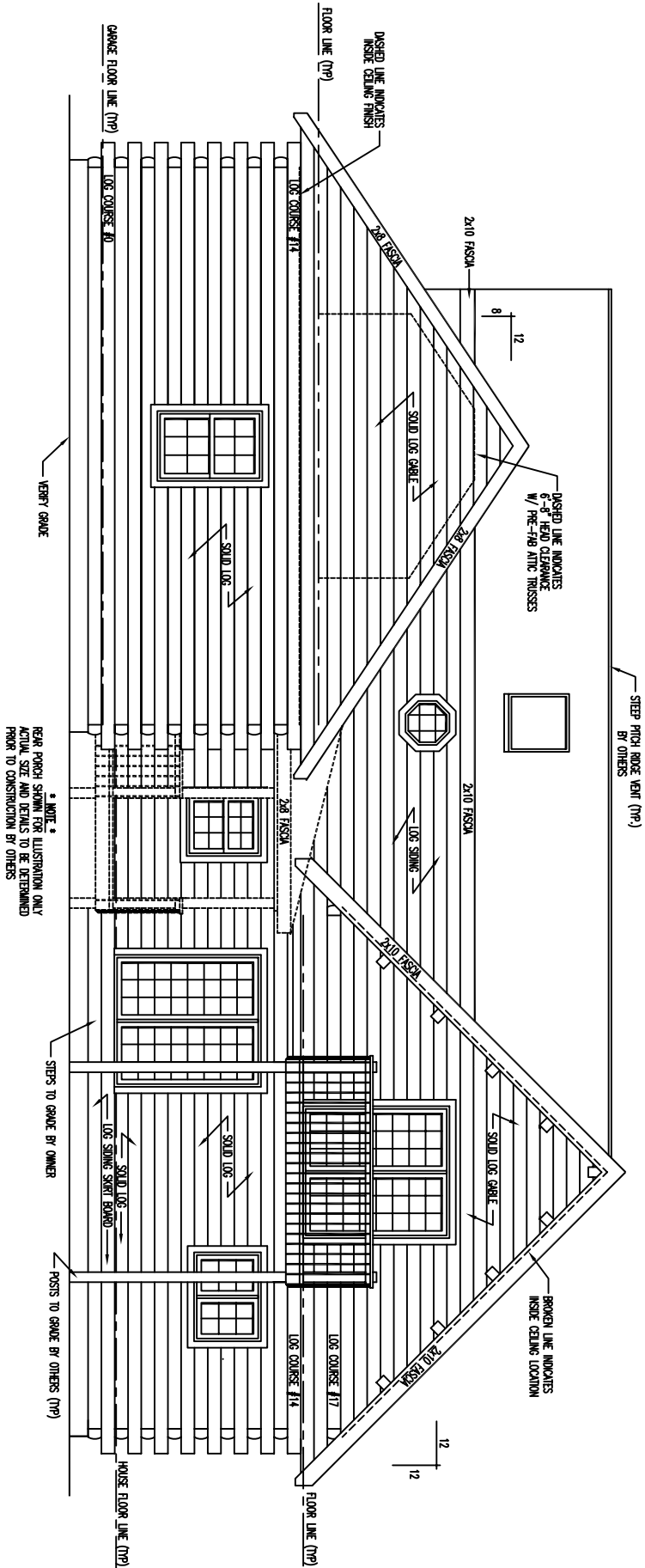
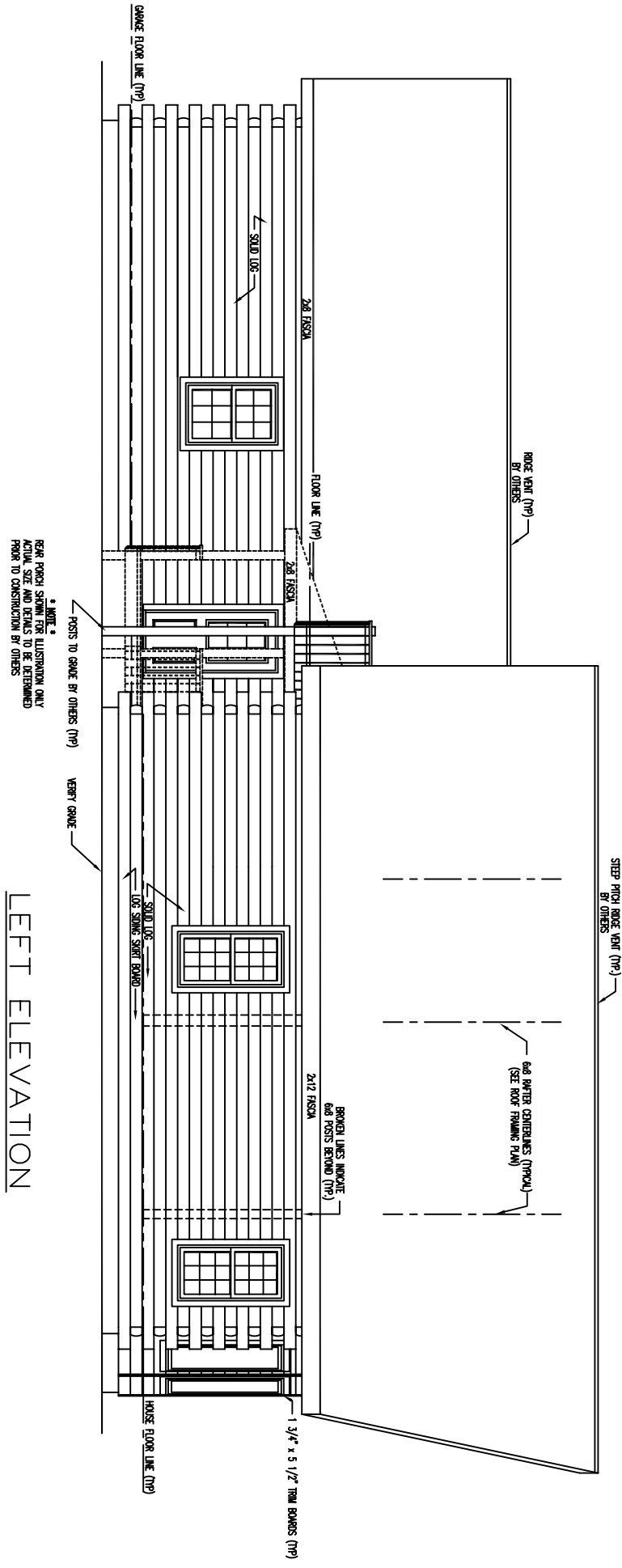


FRONT ELEVATION





REAR ELEVATION



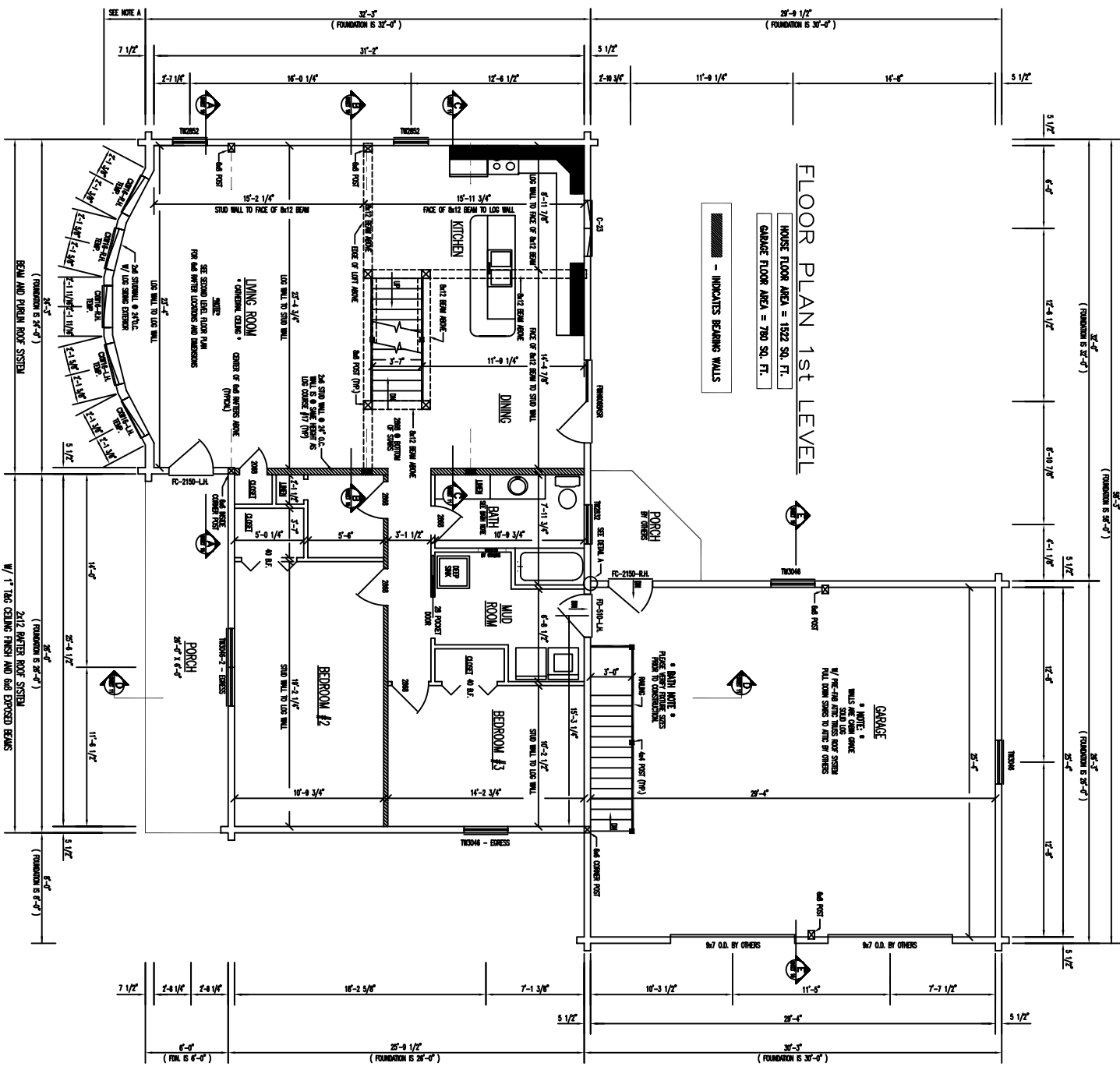
NEAR PORCH SILLING FOR ILLUSTRATION ONLY
 LOGS, SILLING AND CHAINS TO BE DETERMINED
 FROM TO CONSTRUCTION BY OTHERS

LEFT ELEVATION

FLOOR PLAN 1st LEVEL

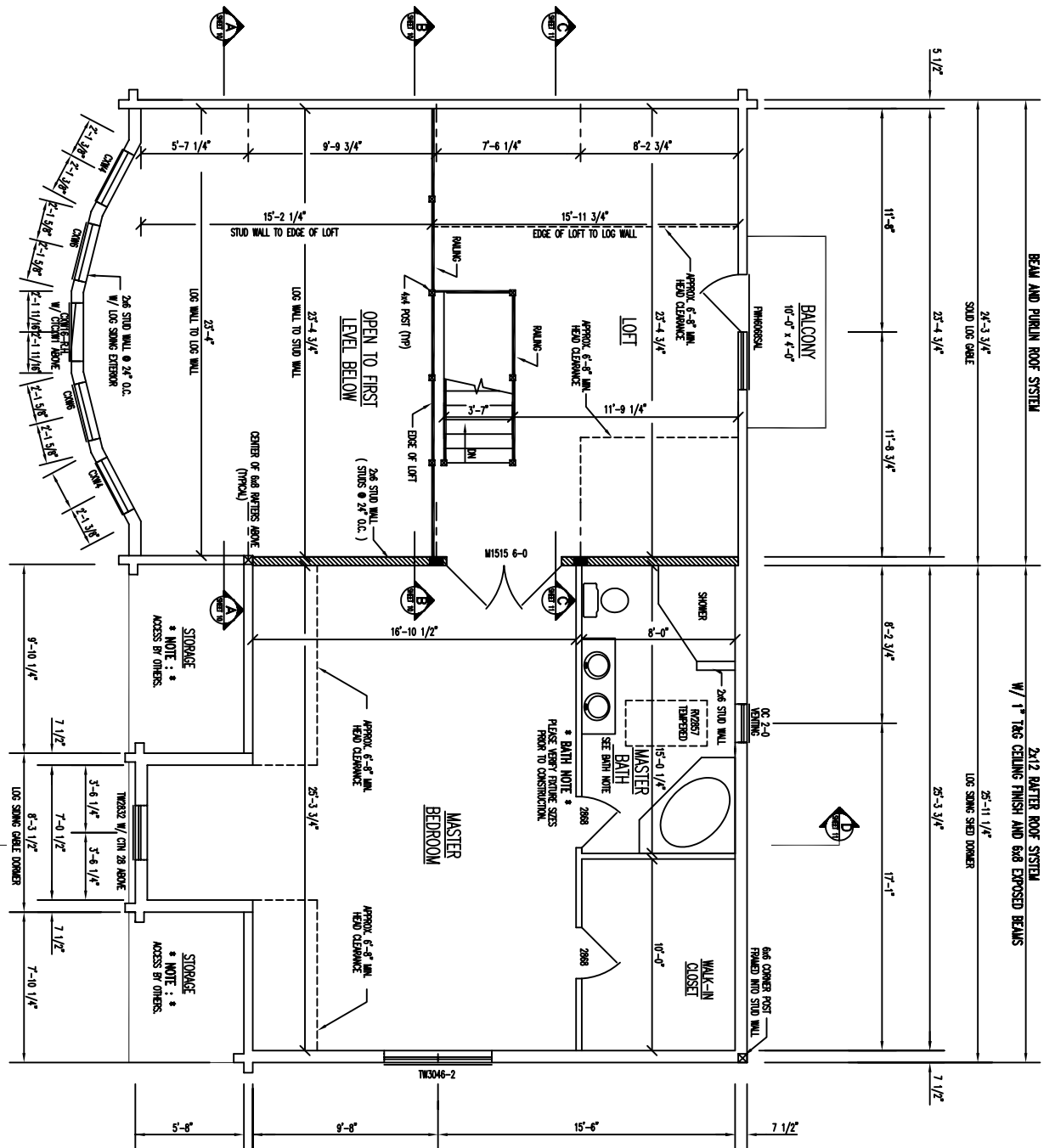
HOUSE FLOOR AREA = 1522 SQ. FT.
 GARAGE FLOOR AREA = 780 SQ. FT.

INDICATES BEARING WALLS



FLOOR PLAN 2ND LEVEL

FLOOR AREA = 1039 SQ. FT.



BEAM AND PURLIN ROOF SYSTEM

2x12 RAFTER ROOF SYSTEM
w/ 1" TAG CEILING FINISH AND 6x6 EXPOSED BEAMS

2x4-3 3/4"
STUD LOG GABLE

2x5-11 1/8"
LOG SWING SHED DOOR

5 1/2"

7 1/2"

11'-8"

6'-2 3/4"

17'-1"

BALCONY
10'-0" x 4'-0"

6x6 CORNER POST
FRAMED INTO STUD WALL

APPROX. 6'-6" MIN.
HEAD CLEARANCE

APPROX. 6'-6" MIN.
HEAD CLEARANCE

APPROX. 6'-6" MIN.
HEAD CLEARANCE

* BATH NOTE *
PLEASE REFER TO THESE
NOTES FOR CONSTRUCTION

OPEN TO FIRST
LEVEL BELOW

2x6 STUD WALL
(STUDS @ 24" O.C.)

CENTER OF LOG BUTTERS JOINT
(TYPICAL)

2x6 STUD WALL @ 24" O.C.
w/ LOG SWING EXTERIOR

TYPICAL w/ CIN 2x8 ABOVE

TYPICAL w/ CIN 2x8 ABOVE

