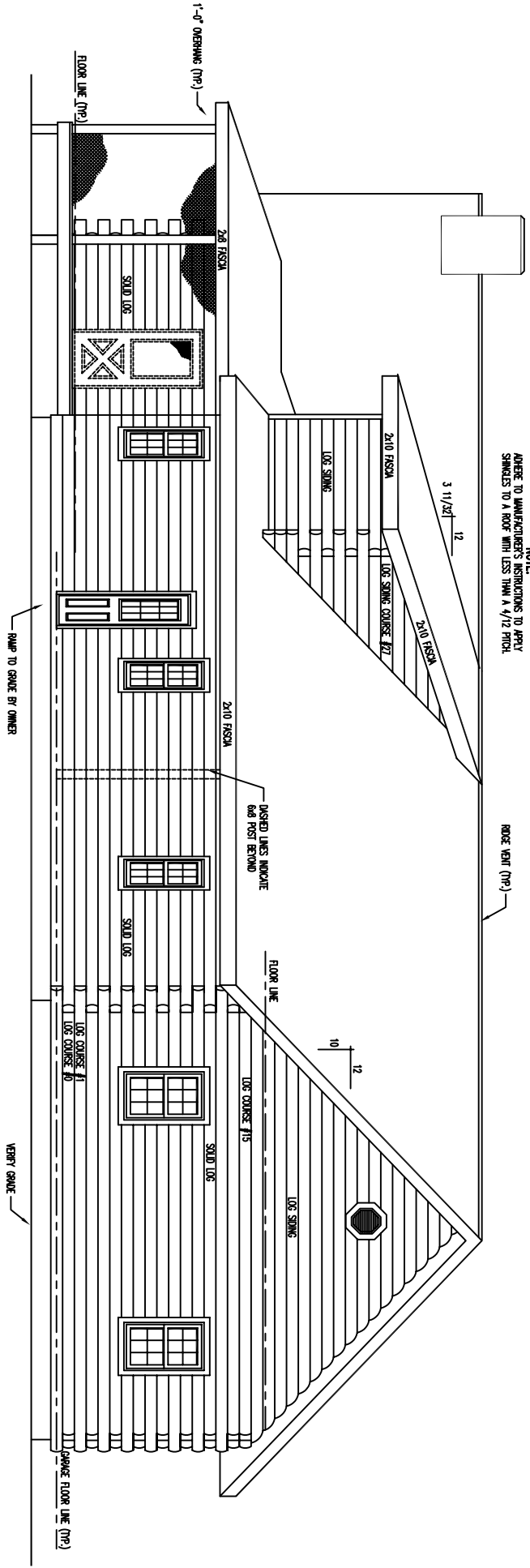
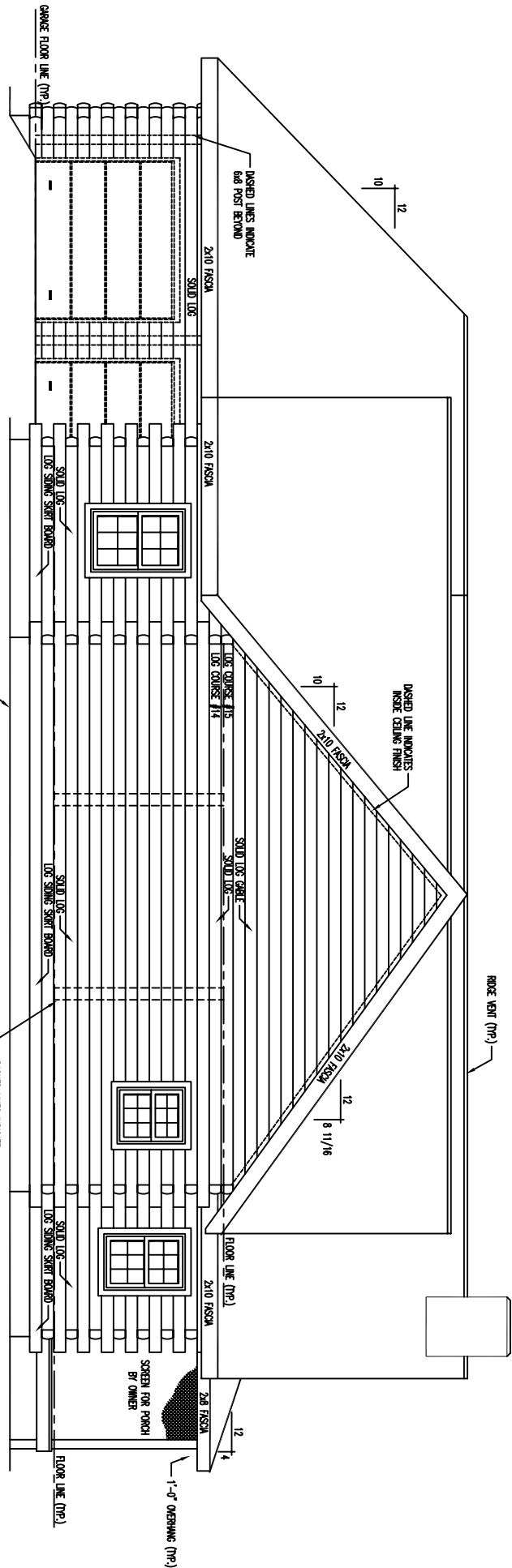


REAR ELEVATION



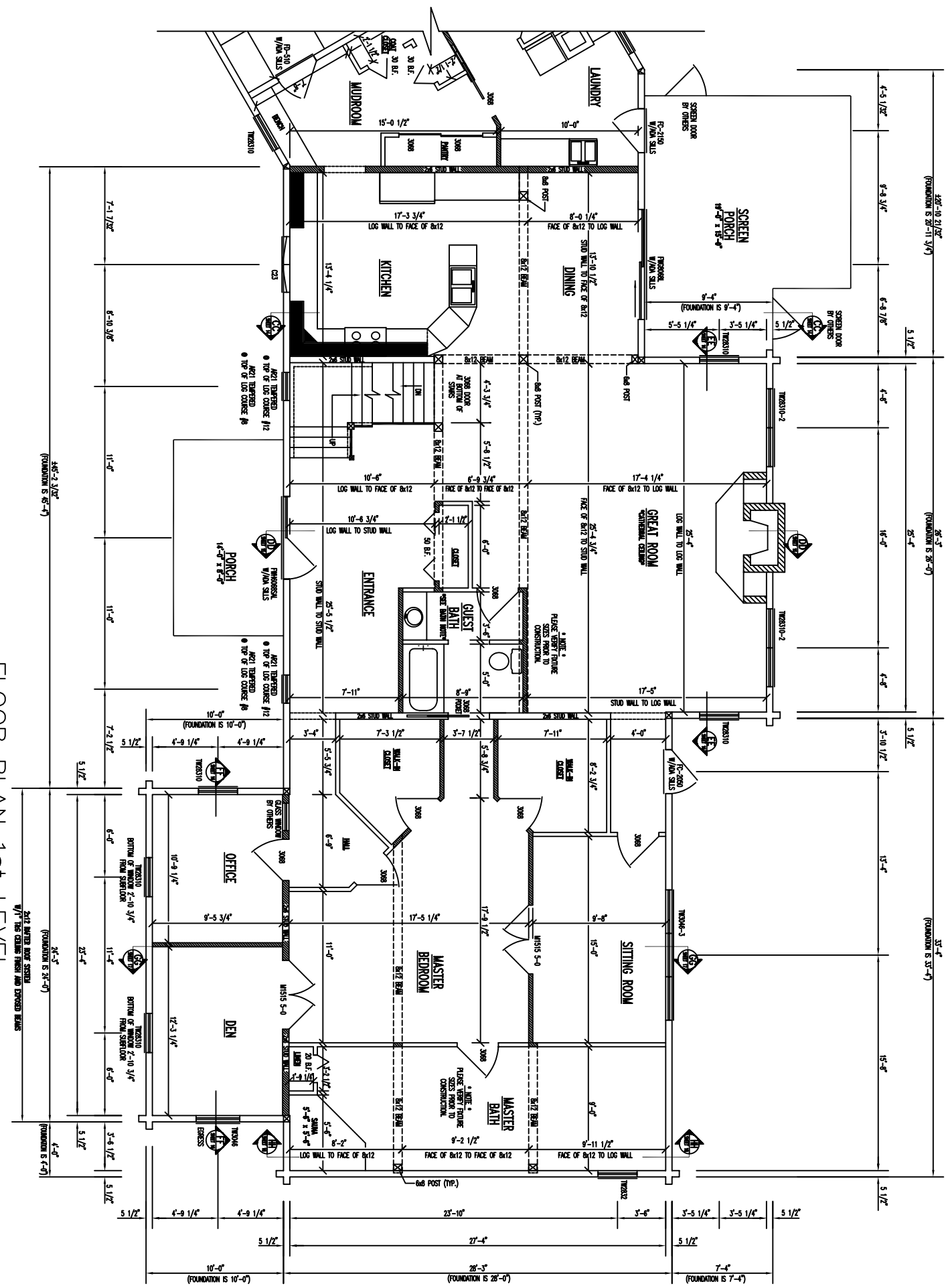
NOTE: ADHERE TO MANUFACTURER'S INSTRUCTIONS TO APPLY SHIMMERS TO A ROOF WITH LESS THAN A 4/12 PITCH.

LEFT ELEVATION



RIGHT ELEVATION

\*\* NOTE: \*\*  
 VENTED GLASS BLOCK WINDOWS  
 ARE TO BE PROVIDED BY OTHERS



**FLOOR PLAN 1st LEVEL**  
 FLOOR AREA = 2,792 SQ. FT.  
 GARAGE FLOOR AREA = 1,214 SQ. FT.

— INDICATES BEARING WALLS

### FLOOR PLAN 1st LEVEL

2x12 WOOD BOSS SYSTEM W/IT THE CEILING TRUSSES AND EXPOSED BEAMS

2x4 WOOD BOSS SYSTEM W/IT THE CEILING TRUSSES AND EXPOSED BEAMS

MGT. TEREPHENTHENE CONSTRUCTION

1/2" OF LOG COURSE #8

1/2" OF LOG COURSE #8

1/2" OF LOG COURSE #8

1/2" OF LOG COURSE #8

1/2" OF LOG COURSE #8

1/2" OF LOG COURSE #8

1/2" OF LOG COURSE #8

1/2" OF LOG COURSE #8

1/2" OF LOG COURSE #8

1/2" OF LOG COURSE #8

1/2" OF LOG COURSE #8

1/2" OF LOG COURSE #8

1/2" OF LOG COURSE #8

1/2" OF LOG COURSE #8

1/2" OF LOG COURSE #8

1/2" OF LOG COURSE #8

1/2" OF LOG COURSE #8

1/2" OF LOG COURSE #8

1/2" OF LOG COURSE #8

1/2" OF LOG COURSE #8

1/2" OF LOG COURSE #8

1/2" OF LOG COURSE #8

1/2" OF LOG COURSE #8

1/2" OF LOG COURSE #8

1/2" OF LOG COURSE #8

1/2" OF LOG COURSE #8

1/2" OF LOG COURSE #8

1/2" OF LOG COURSE #8

1/2" OF LOG COURSE #8

1/2" OF LOG COURSE #8

1/2" OF LOG COURSE #8

1/2" OF LOG COURSE #8

1/2" OF LOG COURSE #8

1/2" OF LOG COURSE #8

1/2" OF LOG COURSE #8

1/2" OF LOG COURSE #8

1/2" OF LOG COURSE #8

1/2" OF LOG COURSE #8

1/2" OF LOG COURSE #8

1/2" OF LOG COURSE #8

1/2" OF LOG COURSE #8

1/2" OF LOG COURSE #8

1/2" OF LOG COURSE #8

1/2" OF LOG COURSE #8

1/2" OF LOG COURSE #8

1/2" OF LOG COURSE #8

1/2" OF LOG COURSE #8

1/2" OF LOG COURSE #8

1/2" OF LOG COURSE #8

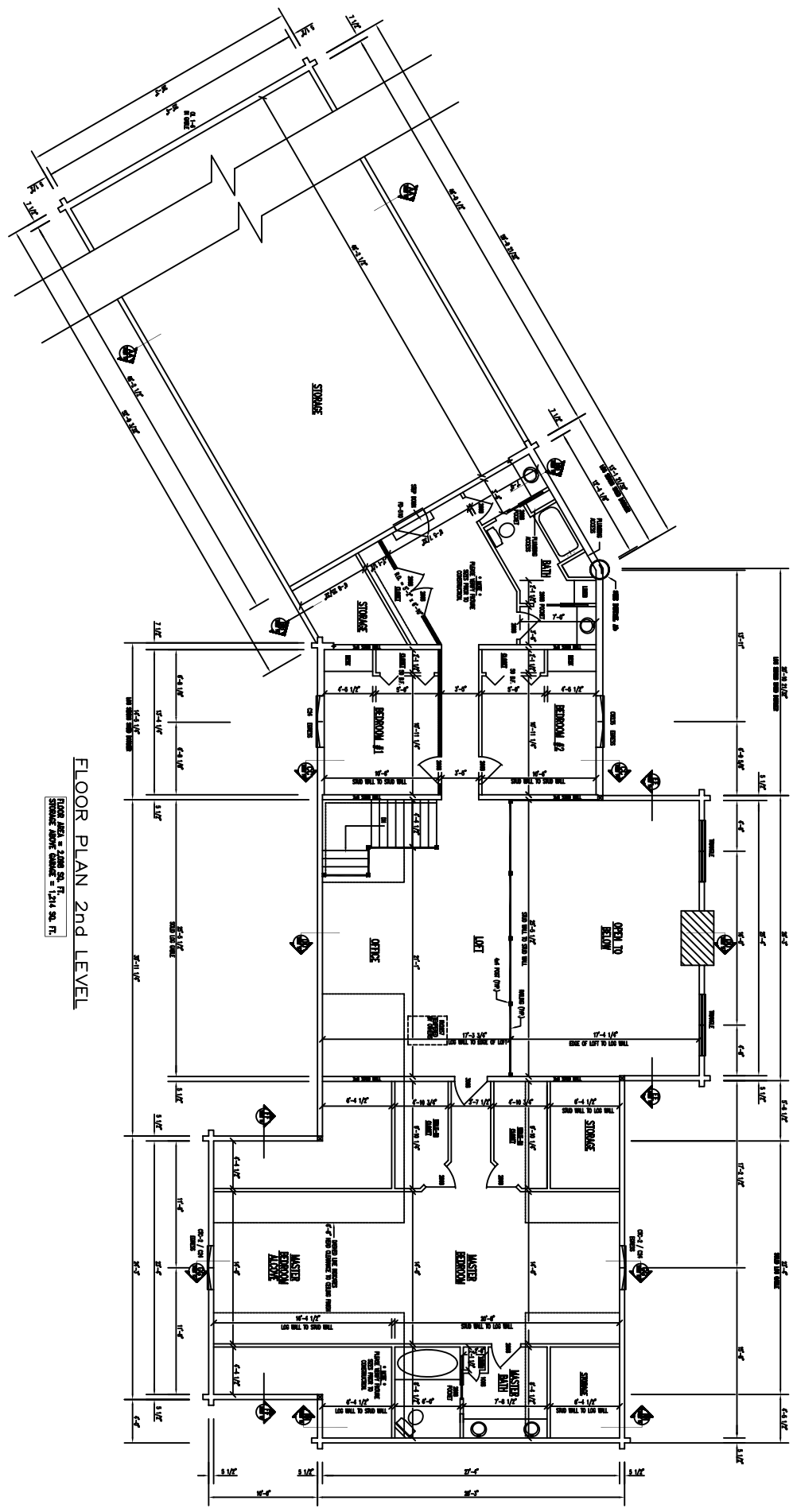
1/2" OF LOG COURSE #8

1/2" OF LOG COURSE #8

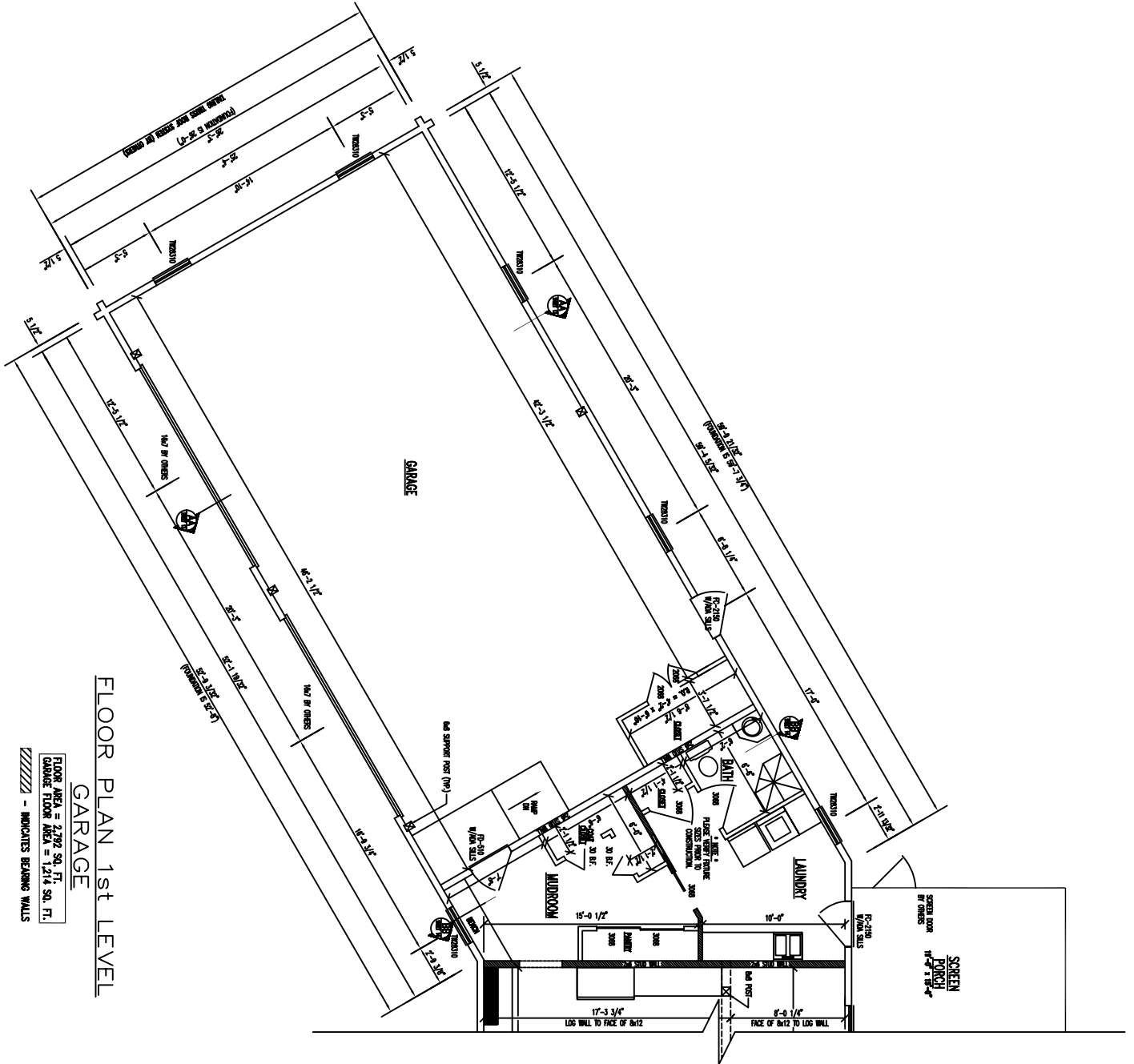
1/2" OF LOG COURSE #8

1/2" OF LOG COURSE #8

1/2" OF LOG COURSE #8



**FLOOR PLAN 2ND LEVEL**  
 FLOOR AREA = 2,000 SQ. FT.  
 STORAGE ABOVE GARAGE = 1,214 SQ. FT.



FLOOR PLAN 1st LEVEL  
GARAGE

FLOOR AREA = 2,782 SQ. FT.  
GARAGE FLOOR AREA = 1,214 SQ. FT.  
/// - INDICATES BEARING WALLS