

# STANDARD L.S. TWO CAR GAMBREL GARAGE

## FLOOR PLANS AND ELEVATIONS FOR 2003



LOG SIDING PROFILE

### \*\* GENERAL NOTES \*\*

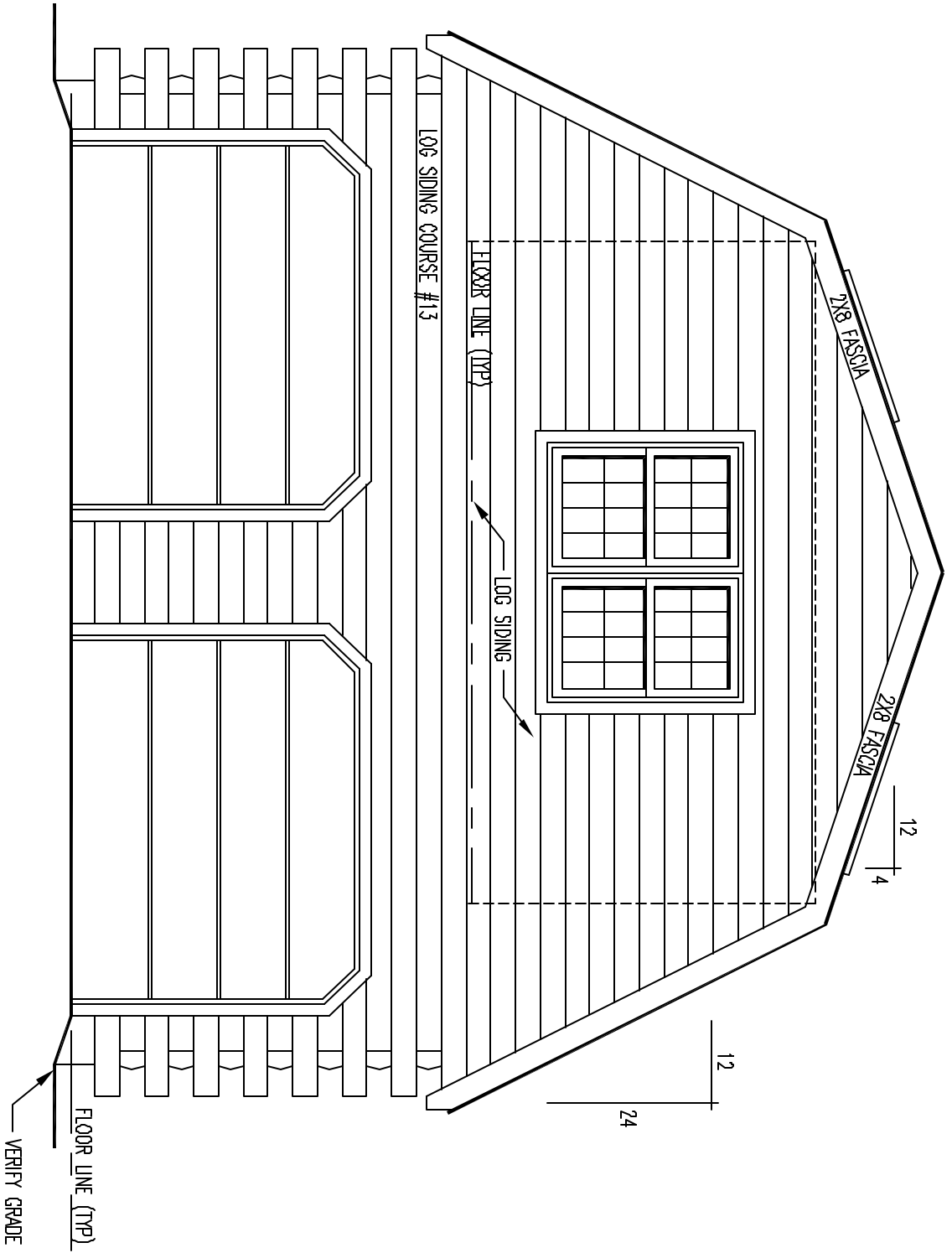
- 2 X 8 D WHITE PINE LOG SIDING.
- 13 LOG SIDING COURSES TO SQUARE W/ (1) ROW OF SKIRT BOARD.
- WINDOW GRILLE PATTERNS SHOWN ARE FOR ILLUSTRATION ONLY, ACTUAL PATTERNS MAY VARY.
- VERIFY GRADE ON SITE.

- 1 3/4" X 3 1/2" EXTERIOR TRIM MATERIAL SHOWN AT ALL DOORS AND WINDOWS UNLESS NOTED.
- ALL OVERHANGS APPROX. 1'-0" UNLESS NOTED.
- ROOF SYSTEM DESIGNED FOR 40 LB. SNOW LOAD.
- STEPS ARE TO GRADE ON SITE BY OWNER / OTHERS.

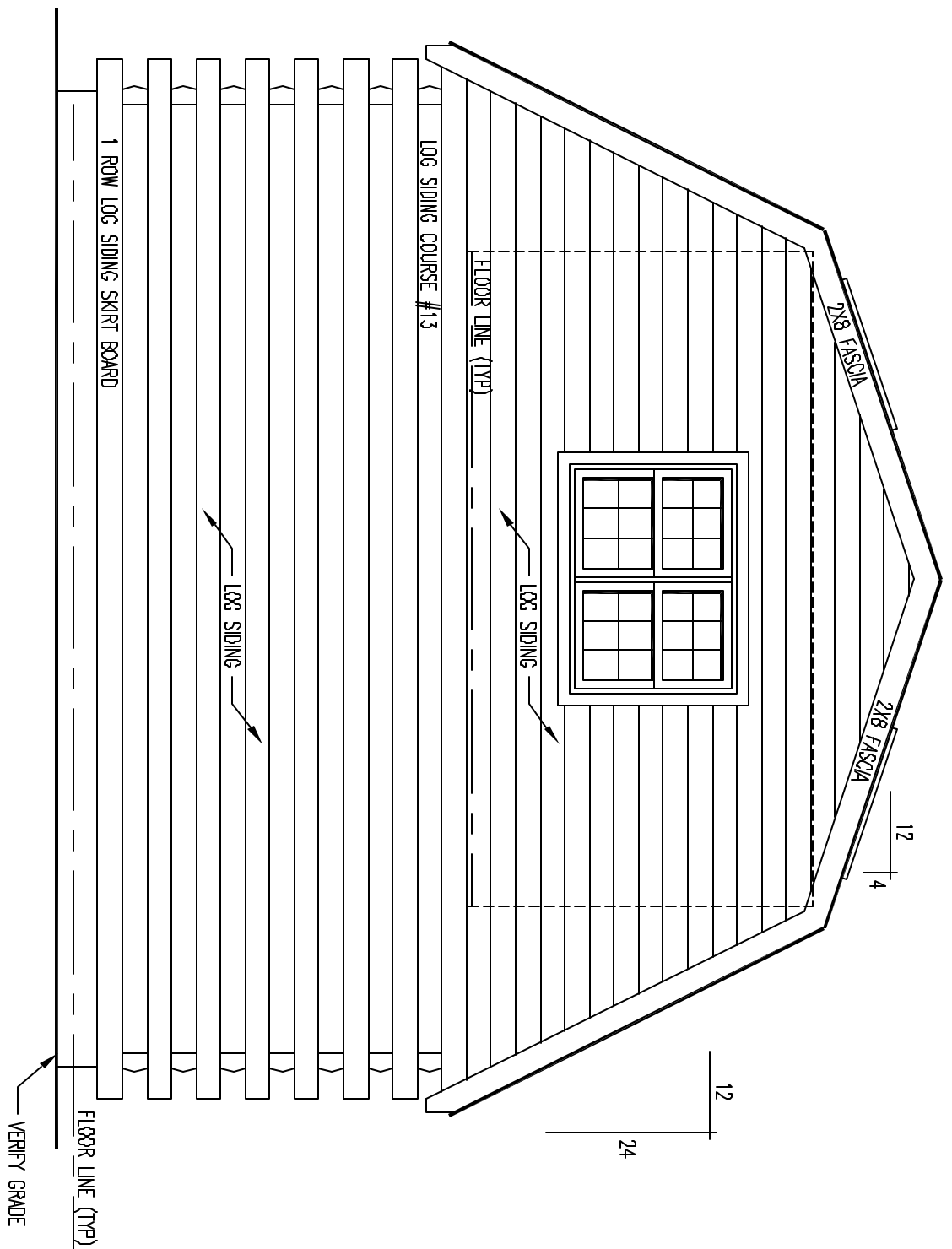
672 SQ. FT. - GARAGE FLOOR

631 SQ. FT. - SECOND FLOOR

2003

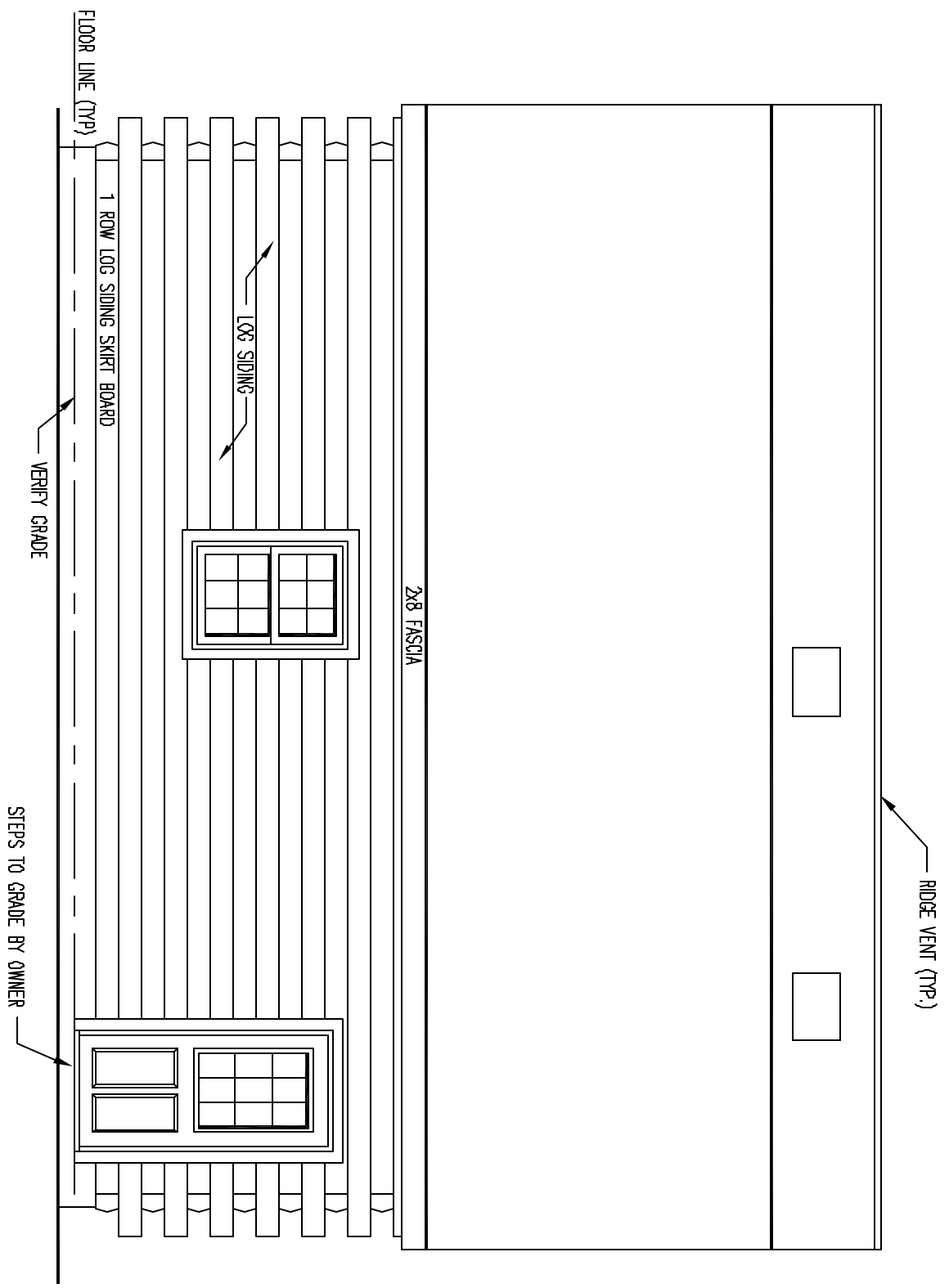


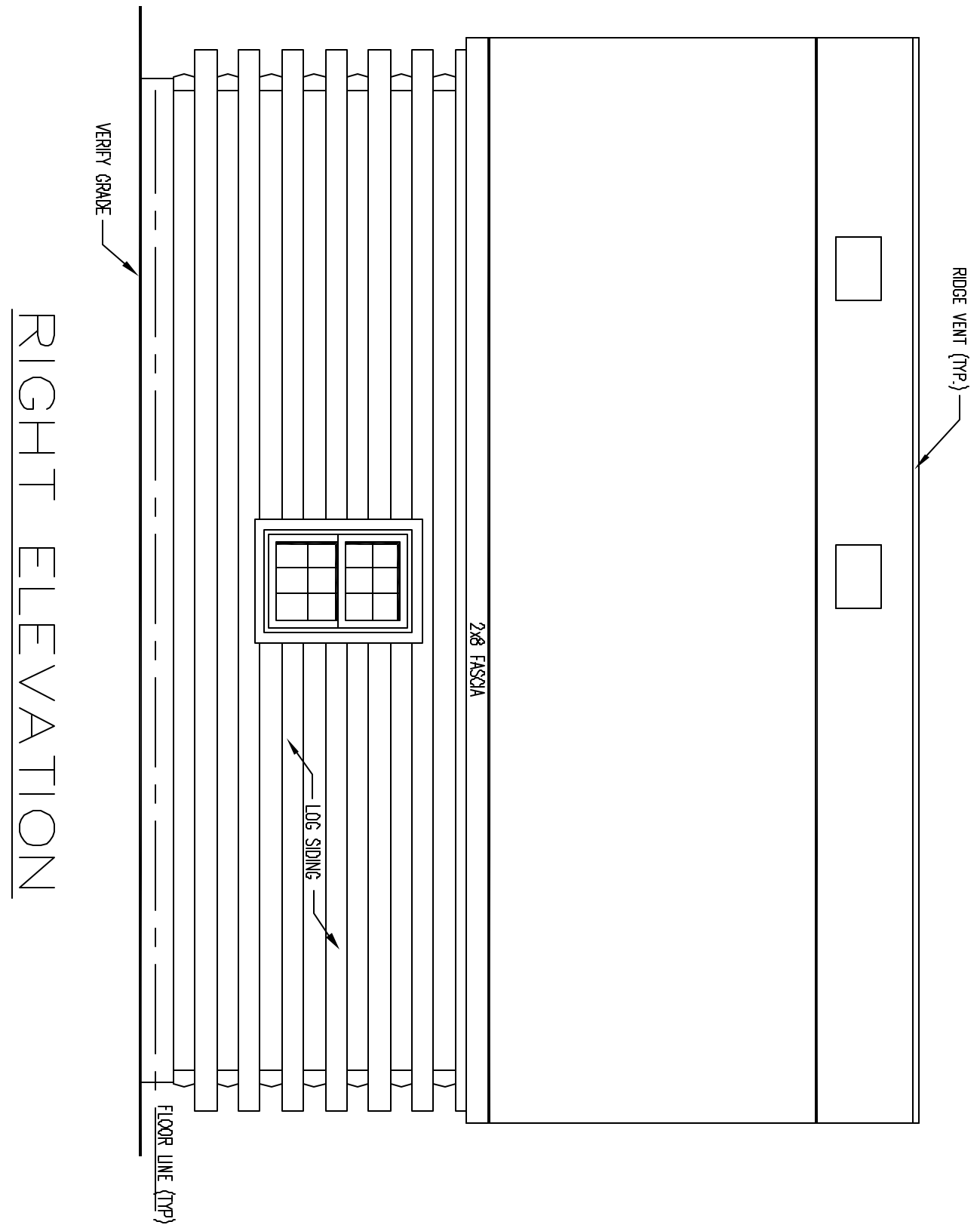
FRONT ELEVATION



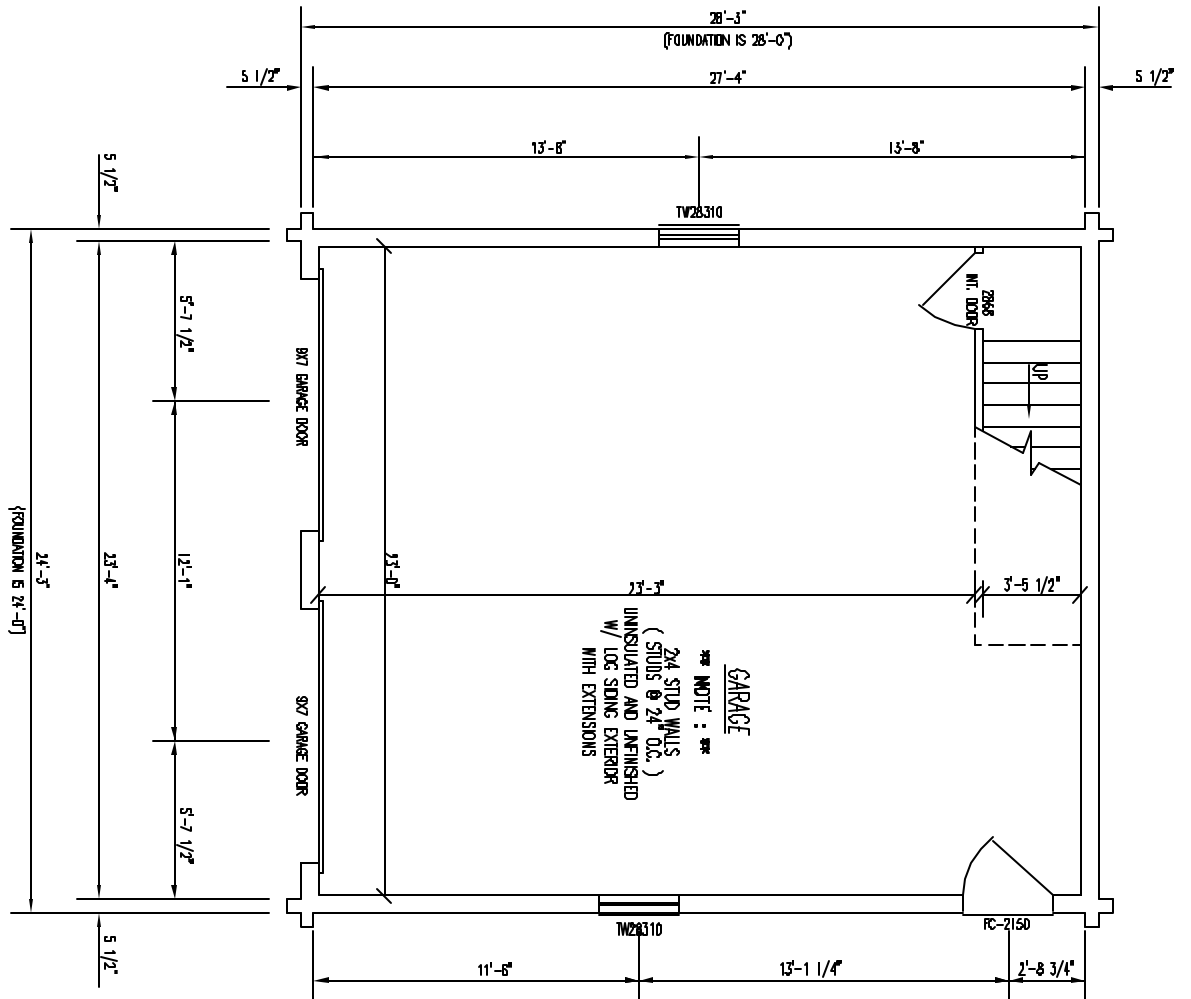
REAR ELEVATION

# LEFT ELEVATION



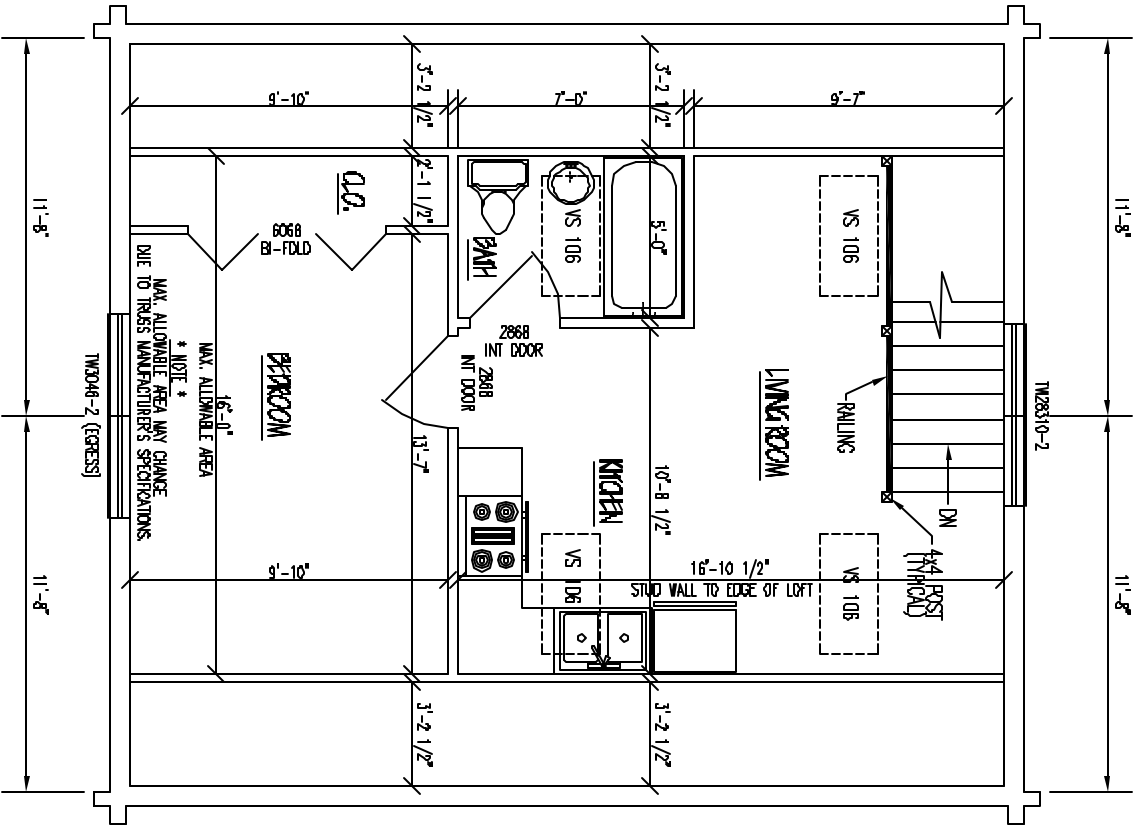


# RIGHT ELEVATION



FLOOR PLAN 1st LEVEL

FLOOR AREA = 672 SQ. FT.



FLOOR PLAN 2nd LEVEL

FLOOR AREA = 631 SQ. FT.