

FRONT ELEVATION

VERIFY GRADE

STEPS AND POSTS TO GRADE BY OWNER

FLOOR LINE (TYP)

2x8 FASCIA

SOLID LOG

BROKEN LINE INDICATES 6x8 POST BEYOND (TYP.)

DASHED LINE REPRESENTS INSIDE CEILING FINISH LOG SIDING COURSE #27

2x10 RAFTERS

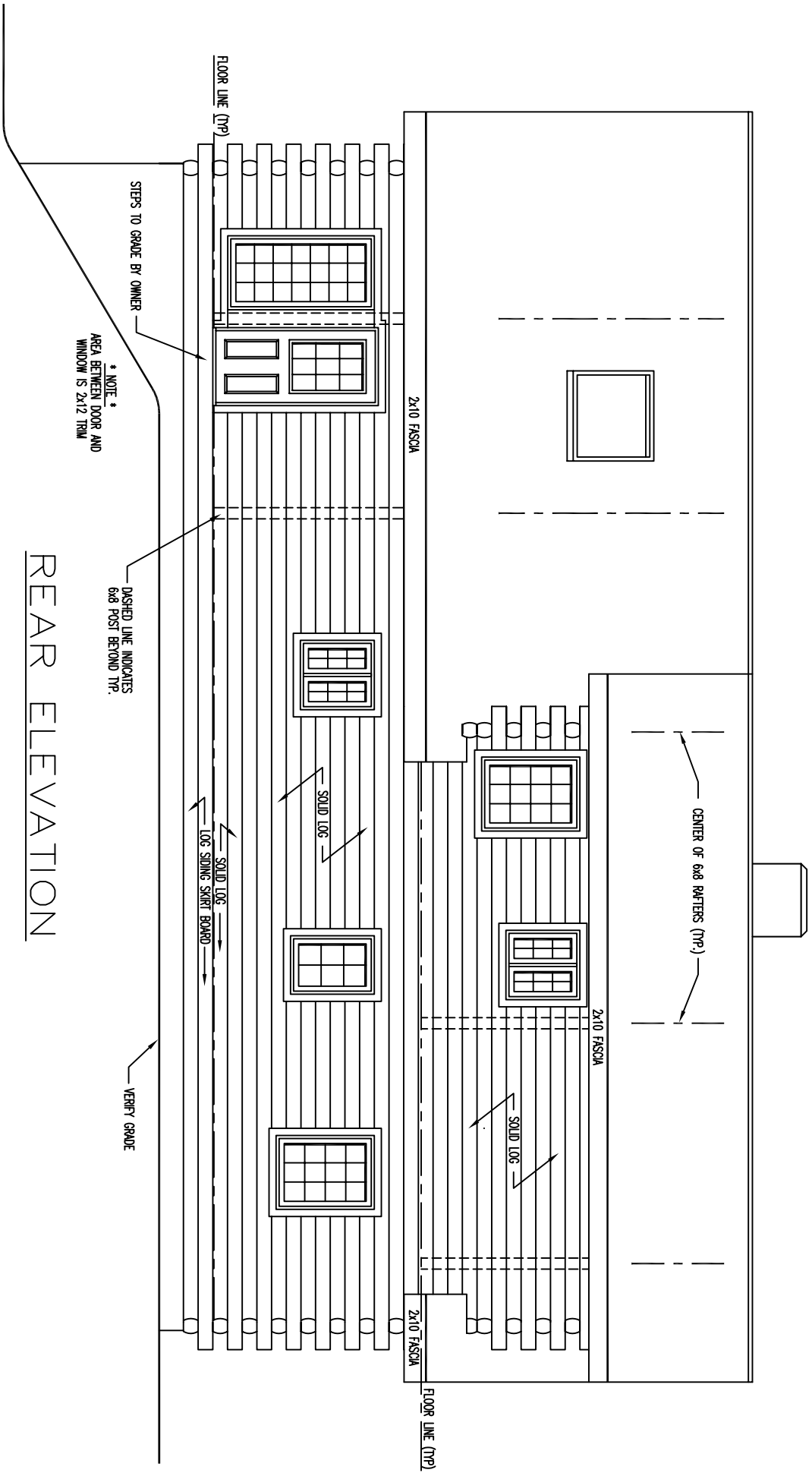
LOG SIDING

2x10 RAFTERS

LOG SIDING COURSE #22

1'-6" OVERHANG

CENTER OF 6x8 RAFTERS (TYP.)



* NOTE *
 AREA BETWEEN DOOR AND
 WINDOW IS 2x12 TRIM

DASHED LINE INDICATES
 6x8 POST BEYOND TYP.

REAR ELEVATION

VERIFY GRADE

FLOOR LINE (TYP)

2x10 FASCIAS

2x10 FASCIAS

FLOOR LINE (TYP)

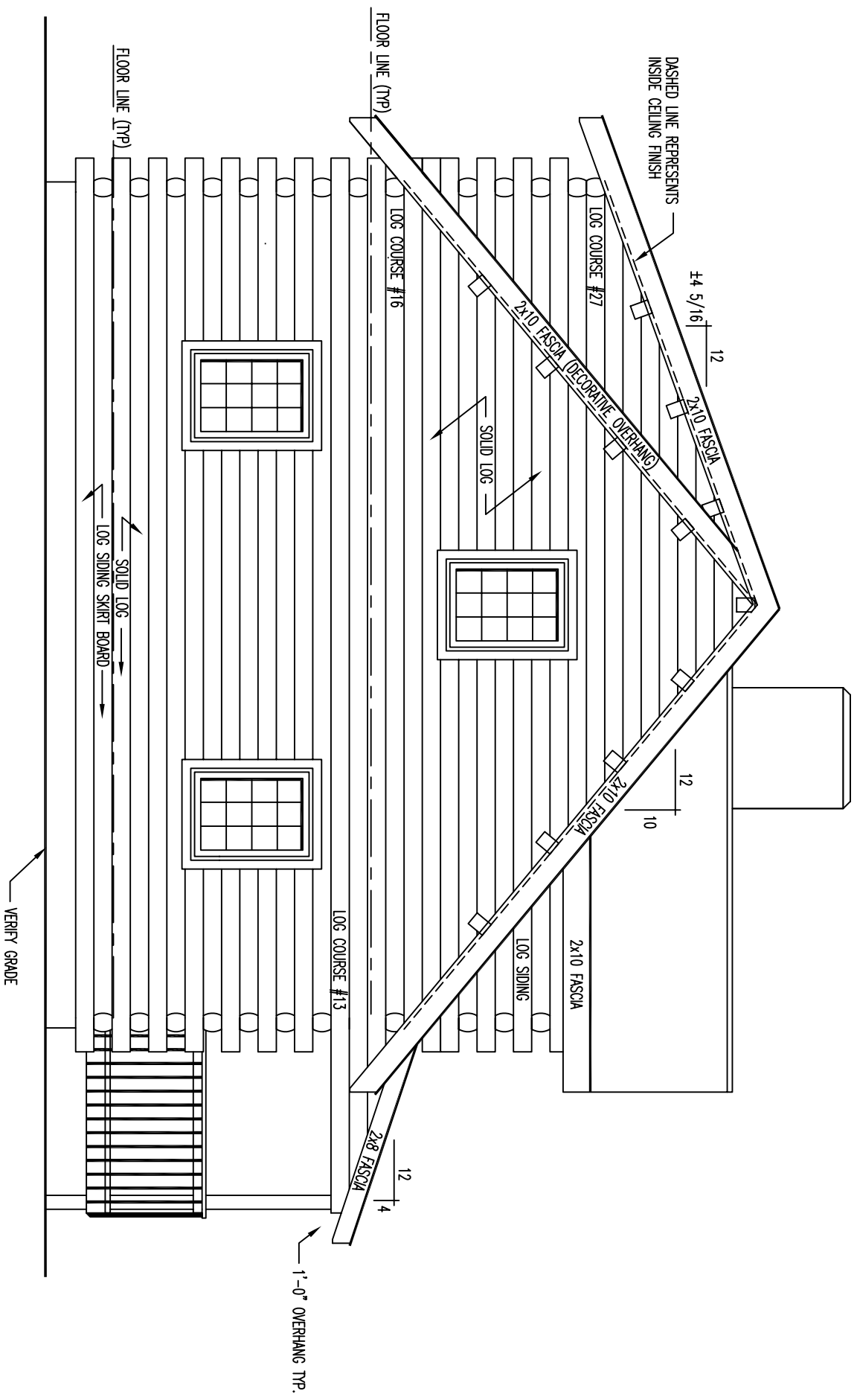
SOLID LOG

SOLID LOG
 LOG SIDING SHIRT BOARD

SOLID LOG

2x10 FASCIAS

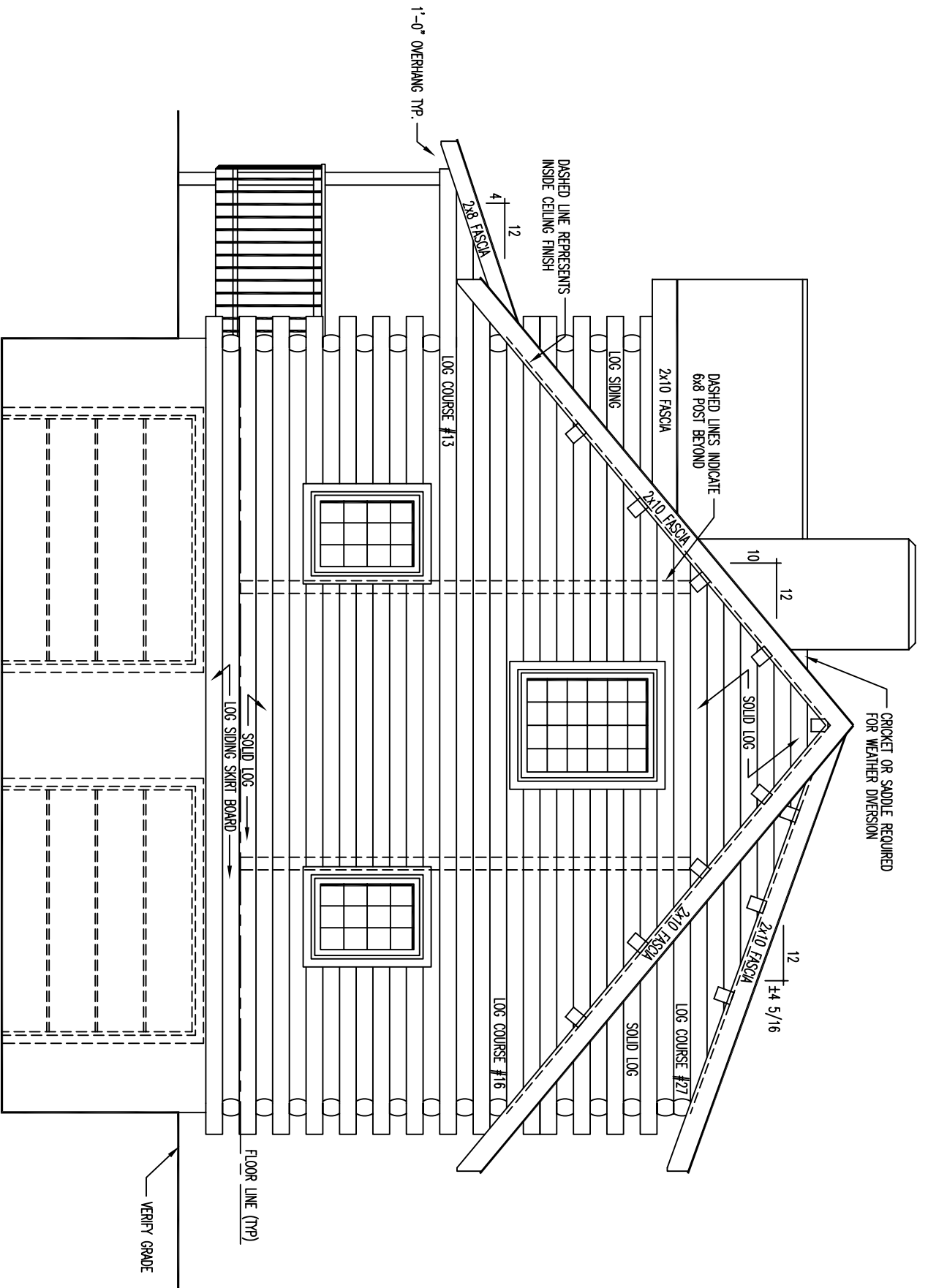
CENTER OF 6x8 RAFTERS (TYP.)



LEFT ELEVATION

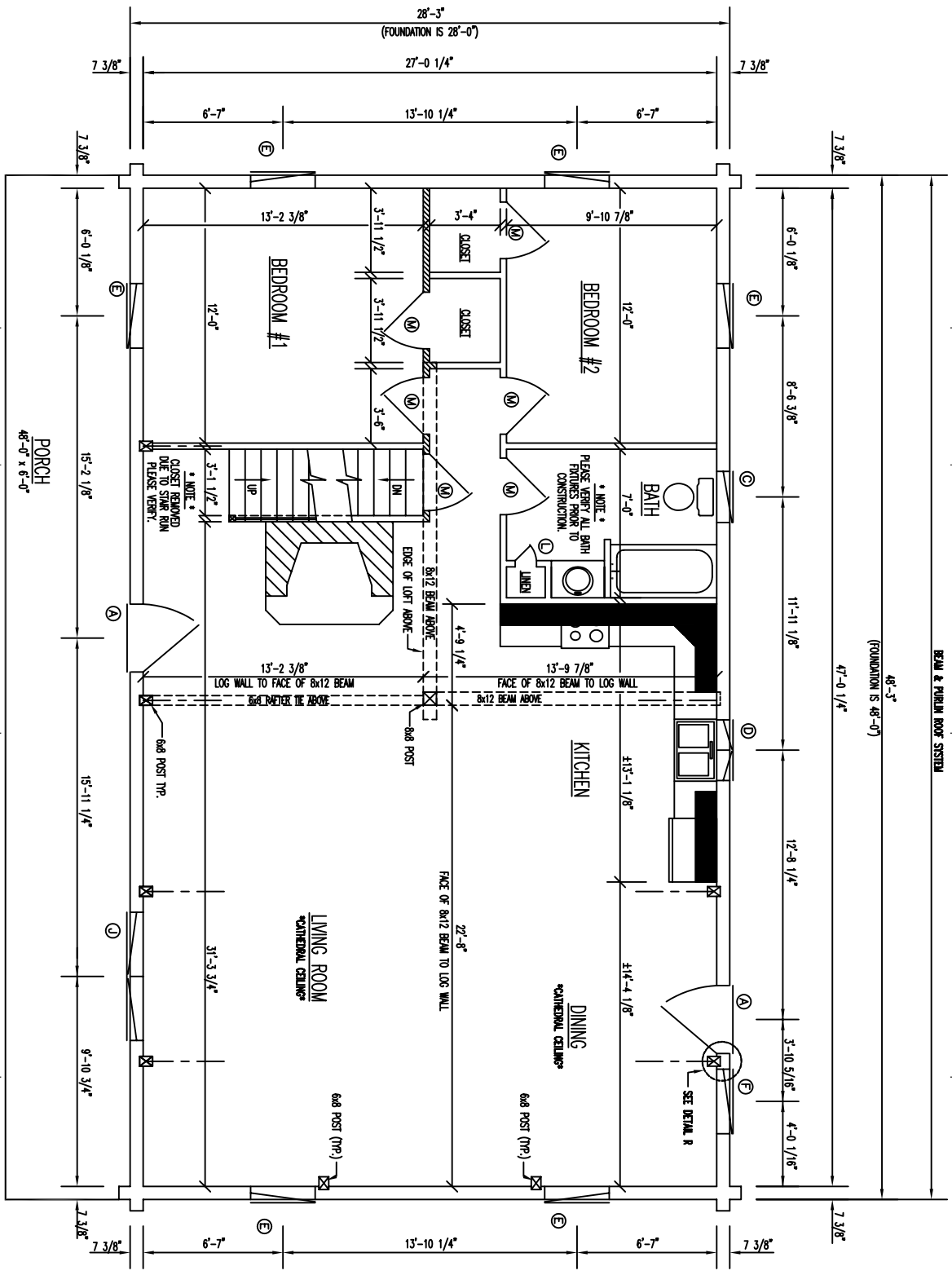
1'-0" OVERHANG TYP.

VERIFY GRADE



* NOTE *
 GARAGE DOORS ARE BY OTHERS
 PLEASE VERIFY SIZE AND LOCATION
 PRIOR TO CONSTRUCTION.

RIGHT ELEVATION



FLOOR PLAN 1st LEVEL

TOTAL LIVING AREA = 1344 SQ. FEET

----- INDICATES BEARING WALLS

BEAM & FURIN ROOF SYSTEM

48'-3" (FOUNDATION IS 48'-0")

47'-0 1/4"

7 3/8"

7 3/8"

PORCH
48'-0" x 6'-0"

SECTION 9

SECTION 9

SECTION 9

SECTION 9

SECTION 9

SECTION 9

SECTION 9

SECTION 9

28'-3" (FOUNDATION IS 28'-0")

27'-0 1/4"

6'-7" 13'-10 1/4" 6'-7"

7 3/8" 7 3/8" 7 3/8"

6'-0 1/8" 8'-8 3/8" 11'-11 1/8" 12'-8 1/4" 3'-10 5/16" 4'-0 1/16"

13'-2 3/8" 3'-11 1/2" 3'-4" 9'-10 7/8" 12'-0" 7'-0" 13'-9 7/8" 11'-3 1/8" 22'-8" 11'-4 1/8" 31'-3 3/4" 9'-10 3/4"

12'-0" 3'-11 1/2" 3'-11 1/2" 3'-6" 4'-9 1/4" 13'-2 3/8" 13'-2 3/8" 13'-9 7/8" 13'-11 1/4" 31'-3 3/4" 6'-0 1/8" 6'-7" 13'-10 1/4" 6'-7" 7 3/8"

6'-0 1/8" 15'-2 1/8" 15'-11 1/4" 9'-10 3/4" 7 3/8" 7 3/8" 7 3/8"

6'-7" 13'-10 1/4" 6'-7" 7 3/8"

6'-7" 13'-10 1/4" 6'-7" 7 3/8"

6'-7" 13'-10 1/4" 6'-7" 7 3/8"

6'-7" 13'-10 1/4" 6'-7" 7 3/8"

6'-7" 13'-10 1/4" 6'-7" 7 3/8"

6'-7" 13'-10 1/4" 6'-7" 7 3/8"

6'-7" 13'-10 1/4" 6'-7" 7 3/8"

6'-7" 13'-10 1/4" 6'-7" 7 3/8"

6'-7" 13'-10 1/4" 6'-7" 7 3/8"

6'-7" 13'-10 1/4" 6'-7" 7 3/8"

6'-7" 13'-10 1/4" 6'-7" 7 3/8"

6'-7" 13'-10 1/4" 6'-7" 7 3/8"

6'-7" 13'-10 1/4" 6'-7" 7 3/8"

6'-7" 13'-10 1/4" 6'-7" 7 3/8"

6'-7" 13'-10 1/4" 6'-7" 7 3/8"

6'-7" 13'-10 1/4" 6'-7" 7 3/8"

6'-7" 13'-10 1/4" 6'-7" 7 3/8"

6'-7" 13'-10 1/4" 6'-7" 7 3/8"

6'-7" 13'-10 1/4" 6'-7" 7 3/8"

6'-7" 13'-10 1/4" 6'-7" 7 3/8"

6'-7" 13'-10 1/4" 6'-7" 7 3/8"

6'-7" 13'-10 1/4" 6'-7" 7 3/8"

6'-7" 13'-10 1/4" 6'-7" 7 3/8"

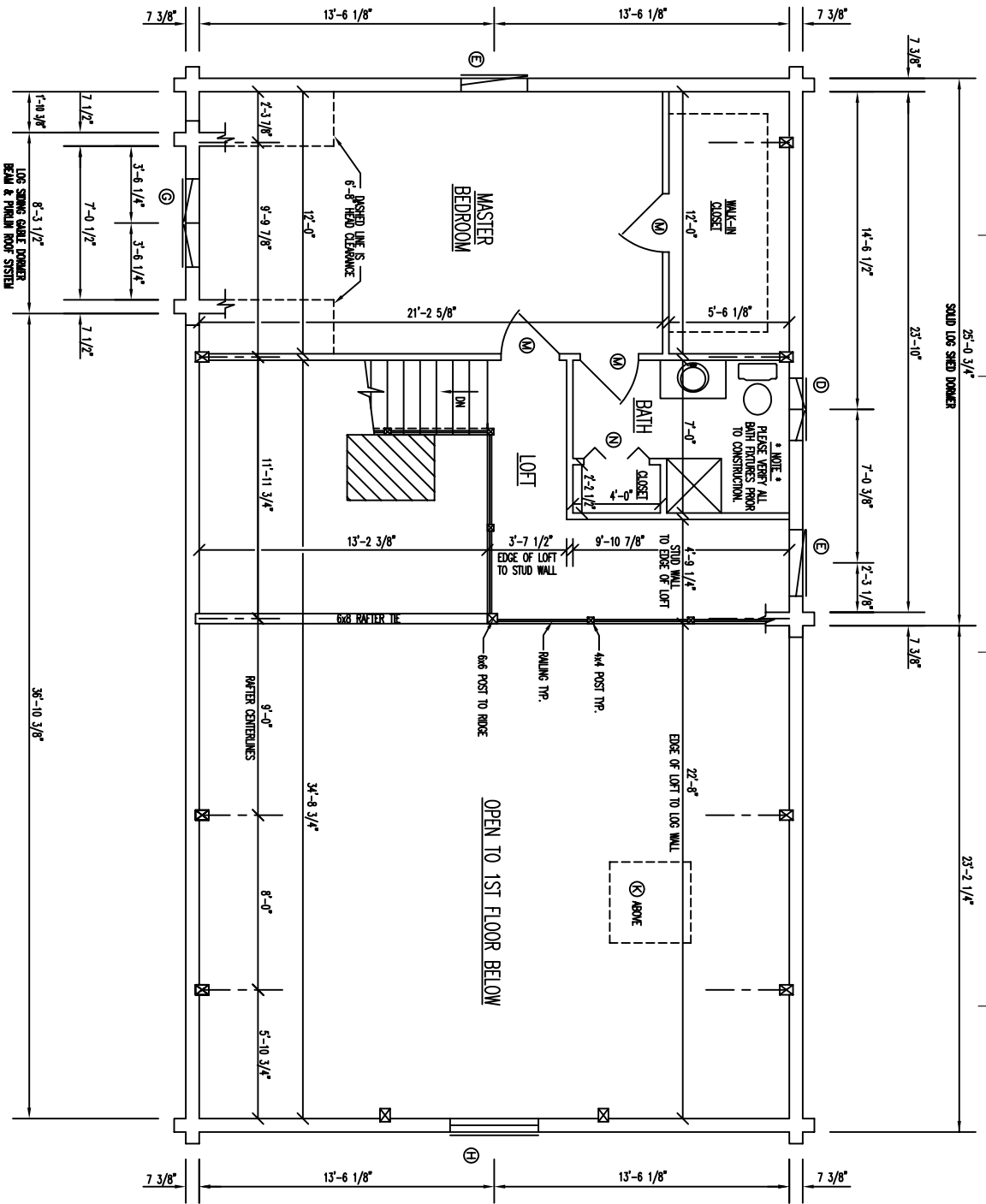
6'-7" 13'-10 1/4" 6'-7" 7 3/8"

6'-7" 13'-10 1/4" 6'-7" 7 3/8"

6'-7" 13'-10 1/4" 6'-7" 7 3/8"

6'-7" 13'-10 1/4" 6'-7" 7 3/8"

6'-7" 13'-10 1/4" 6'-7" 7 3/8"



FLOOR PLAN 2ND LEVEL

FLOOR AREA = 533 SQ. FT.