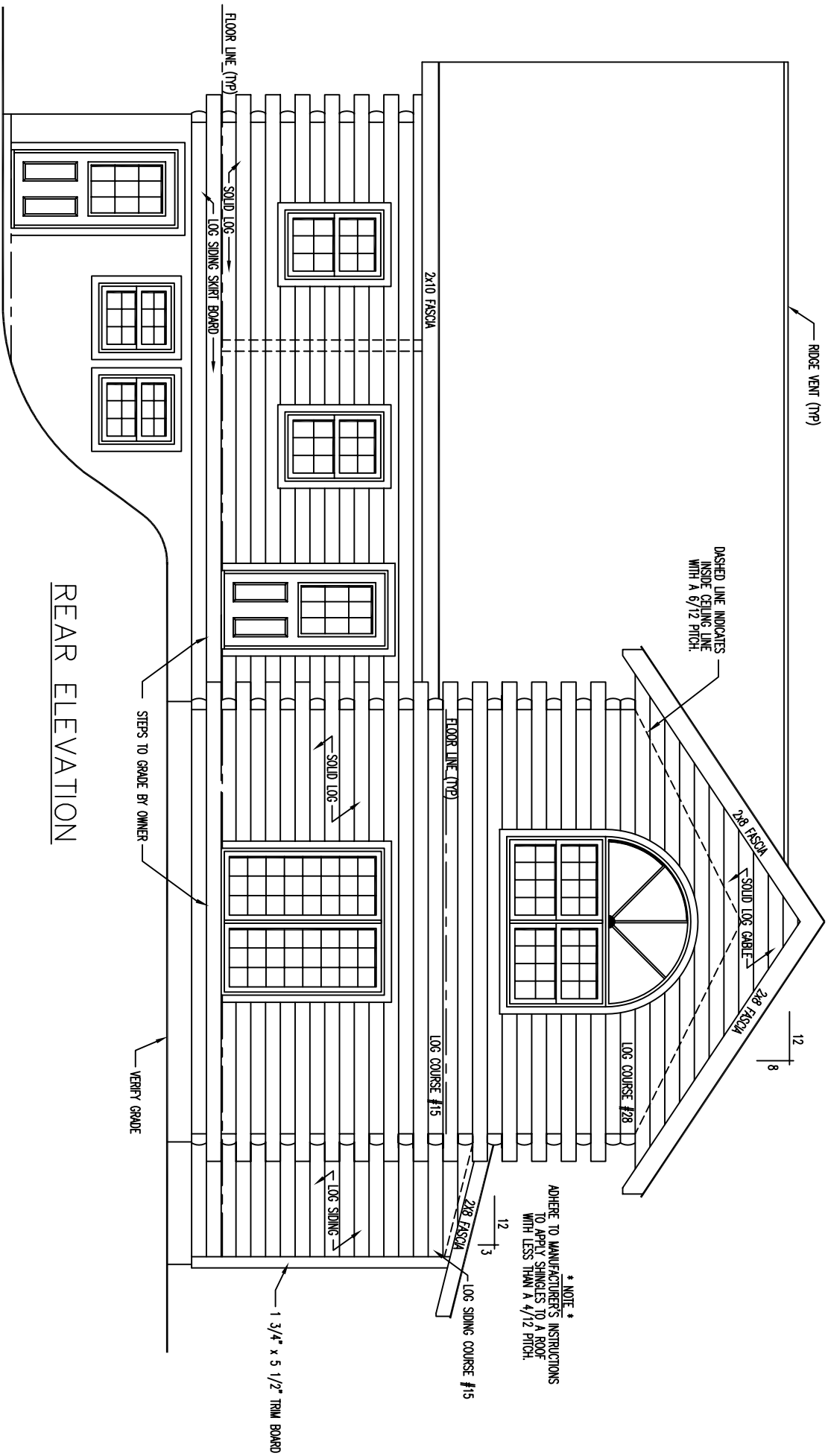


FRONT ELEVATION



— RIDGE VENT (TYP)

DASHED LINE INDICATES
INSIDE CEILING LINE
WITH A 6/12 PITCH.

2x8 FASCHIA
SOLID LOG GABLE
2x8 FASCHIA

12
8

* NOTE *
ADHERE TO MANUFACTURER'S INSTRUCTIONS
TO APPLY SHINGLES TO A ROOF
WITH LESS THAN A 4/12 PITCH.

2x10 FASCHIA

FLOOR LINE (TYP)

LOG COURSE #15

12
3

2x8 FASCHIA
LOG SIDING COURSE #15

SOLID LOG

LOG SIDING

1 3/4" x 5 1/2" TRIM BOARD

FLOOR LINE (TYP)

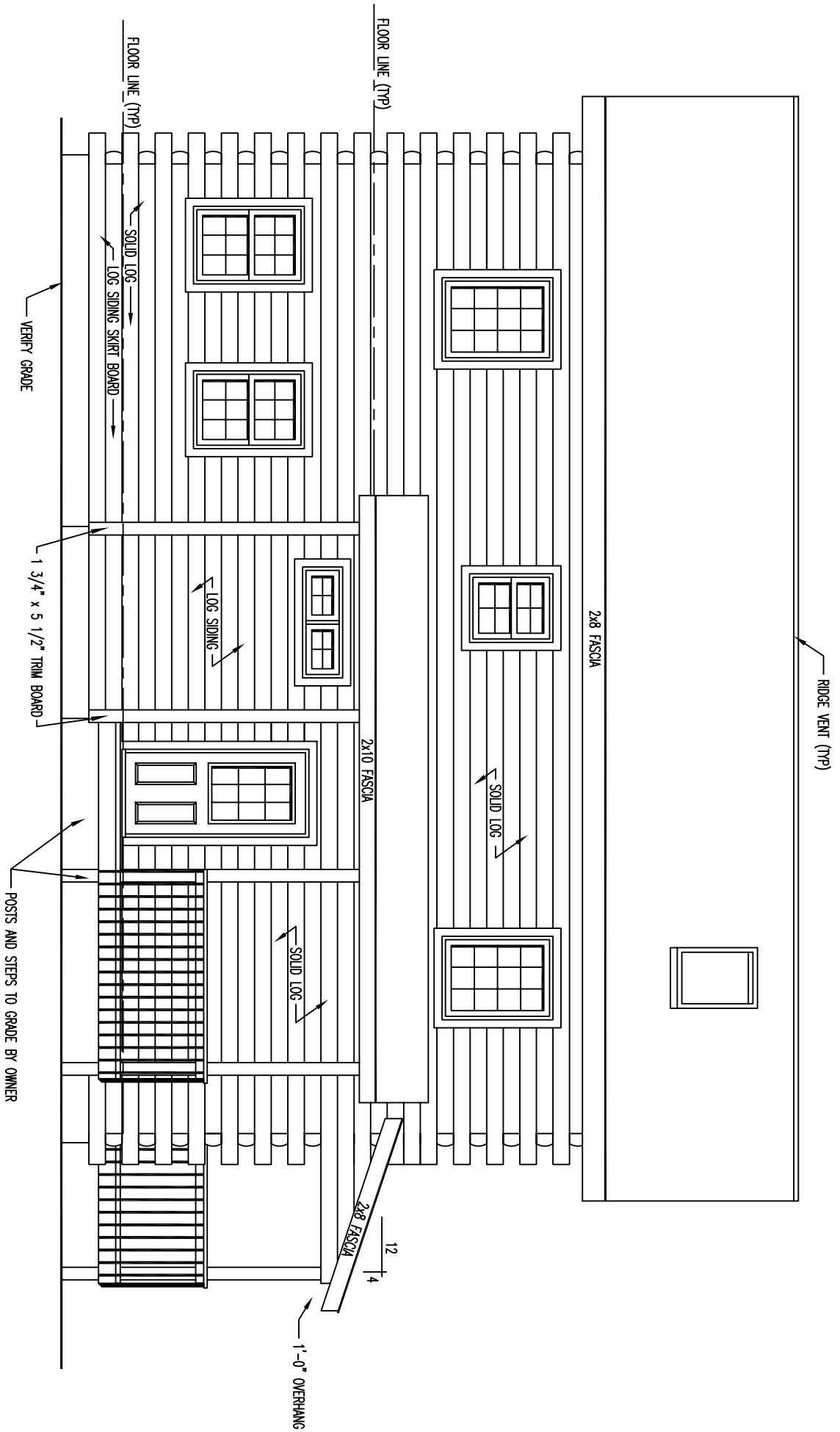
SOLID LOG
LOG SIDING SKIRT BOARD

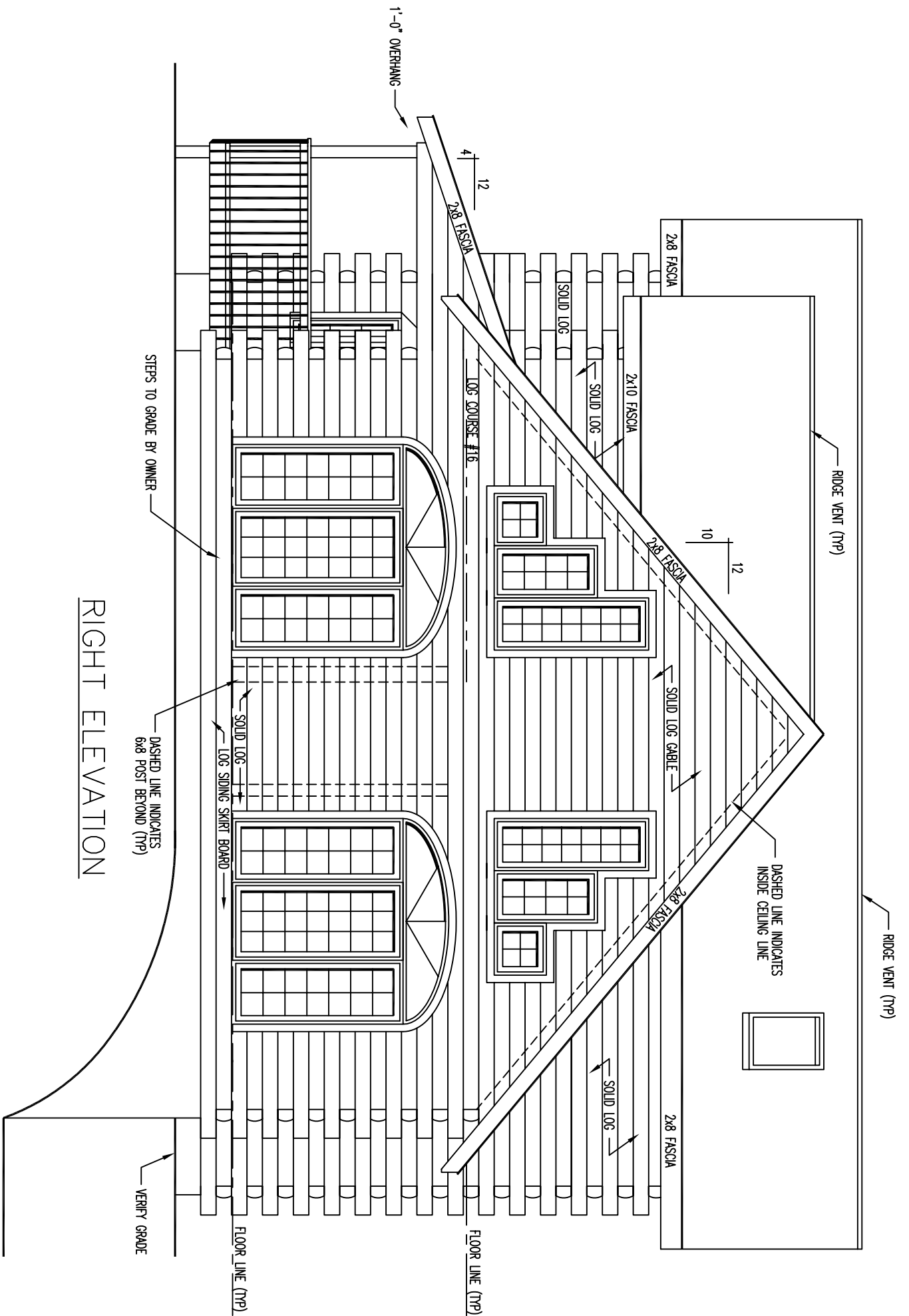
STEPS TO GRADE BY OWNER

VERIFY GRADE

REAR ELEVATION

LEFT ELEVATION





← RIDGE VENT (TYP)

← RIDGE VENT (TYP)

DASHED LINE INDICATES
INSIDE CEILING LINE

10 12

2x8 FASCIA

2x10 FASCIA

2x8 FASCIA

2x8 FASCIA

2x8 FASCIA

(SOLID LOG

← SOLID LOG

← SOLID LOG GABLE

← SOLID LOG

4 12

2x8 FASCIA

LOG COURSE #16

FLOOR LINE (TYP)

1'-0" OVERHANG

← SOLID LOG

← LOG SIDING SKIRT BOARD

FLOOR LINE (TYP)

DASHED LINE INDICATES
6x8 POST BEYOND (TYP)

STEPS TO GRADE BY OWNER

← VERIFY GRADE

RIGHT ELEVATION

FLOOR PLAN 2nd LEVEL

