



## **Post & Beam Construction:** *(This construction will dictate design parameters)*

### *Components*

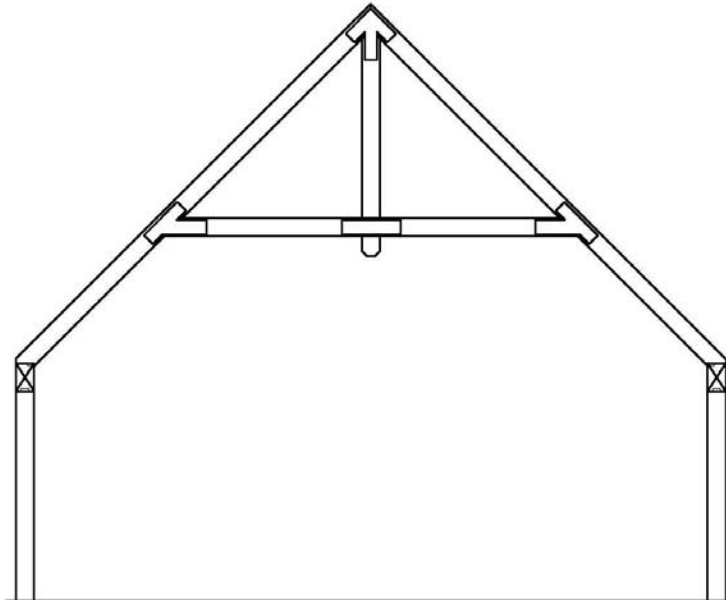
- 6x8 or 8x8 support posts
- 6x6 or 6x8 angle braces
- 6x12 or 8x12 frame / header
- 6x8 or 6x12 floor Joists
- 6x8 or 6x12 rafter roof system
- 6x8 gable trusses *(timber framed gable end trusses will be designed based on glass configuration)*
- 2x6 framed insulated (R-21) exterior walls with interior 1x8 T&G. Exterior finish materials as designated per request.
- Built up roof system with rigid insulation (R-40.6).

### *Joinery*

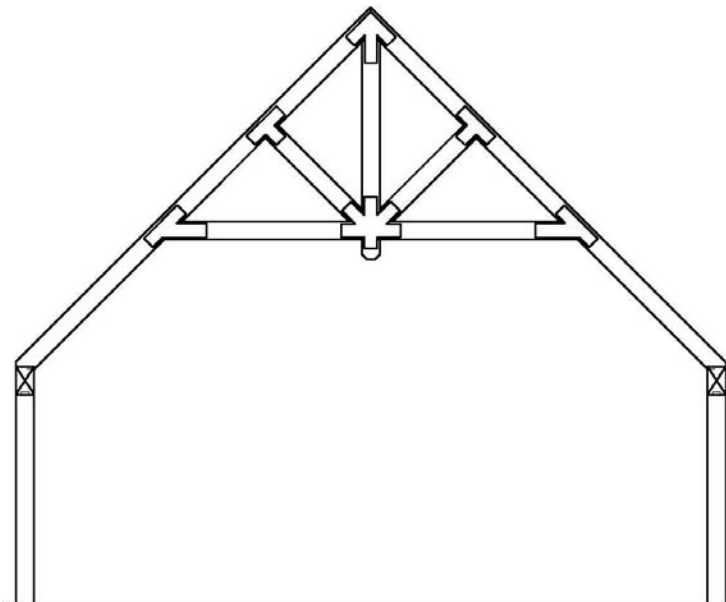
- Posts, headers and rafter material to be pre-cut with end cuts.
- Mechanical fasteners and gusset plates.

## **Additional Options:**

- SIP Panel exterior 6-1/2" walls panels (R-23) and 10-1/4" roof panels (R-38)
- Exterior finishes:
  - Log siding
  - Stone veneer
  - Cedar shakes
  - Hardie Board
  - Solid Log
  - Board & Batten



'A' TRUSS WITH KING POST  
TRUSSES ARE SHOWN WITH 6X8 RAFTERS.  
ANY STRUCTURES OVER 28' WIDE TO BE PRICED WITH 6X12 RAFTERS



'KING POST' TRUSS WITH KING POST & WEBBING  
TRUSSES ARE SHOWN WITH 6X8 RAFTERS.  
ANY STRUCTURES OVER 28' WIDE TO BE PRICED WITH 6X12 RAFTERS

**Your Dream ... Our Passion**



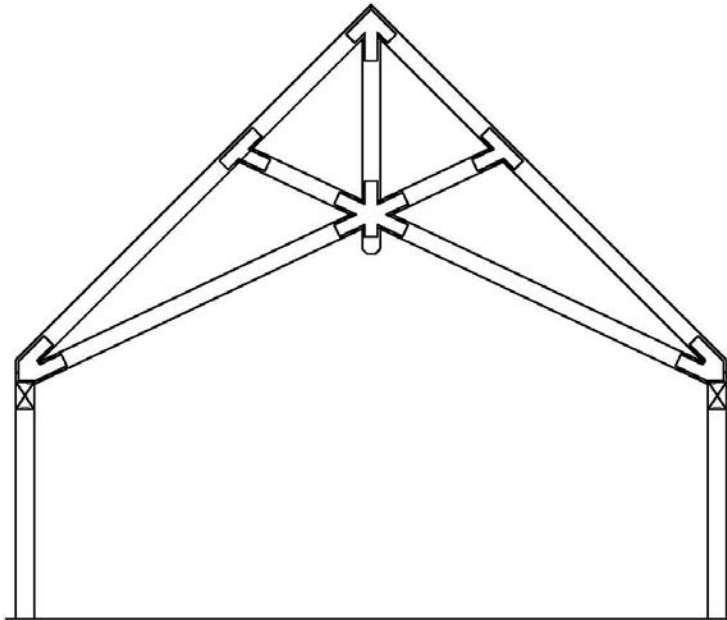
TIMBERHAVEN LOG & TIMBER HOMES, LLC

1081 Salem Church Road, Middleburg, PA 17842

855.306.5678

[www.TimberhavenLogHomes.com](http://www.TimberhavenLogHomes.com)

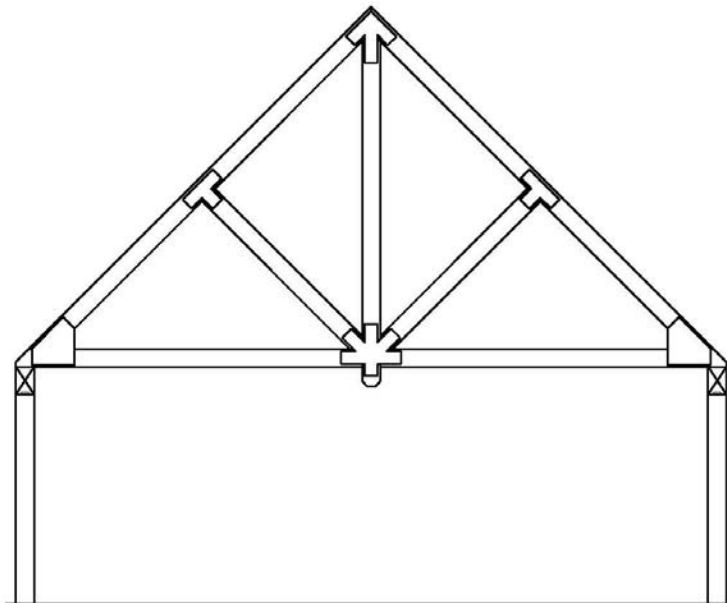
[www.LogHomeDesignCenter.com](http://www.LogHomeDesignCenter.com)



'SCISSOR' TRUSS

TRUSSES ARE SHOWN WITH 6X8 RAFTERS.

ANY STRUCTURES OVER 28' WIDE TO BE PRICED WITH 6X12 RAFTERS



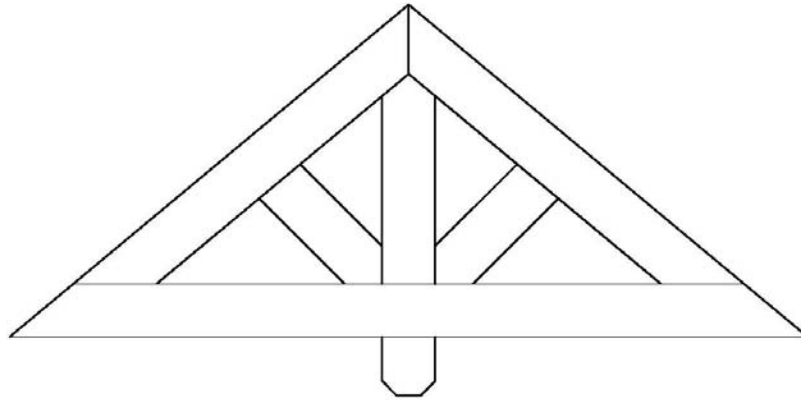
'KING POST' TRUSS WITH KING POST & WEBBING

(Primarily used for Porch End Truss)

TRUSSES ARE SHOWN WITH 6X8 RAFTERS.

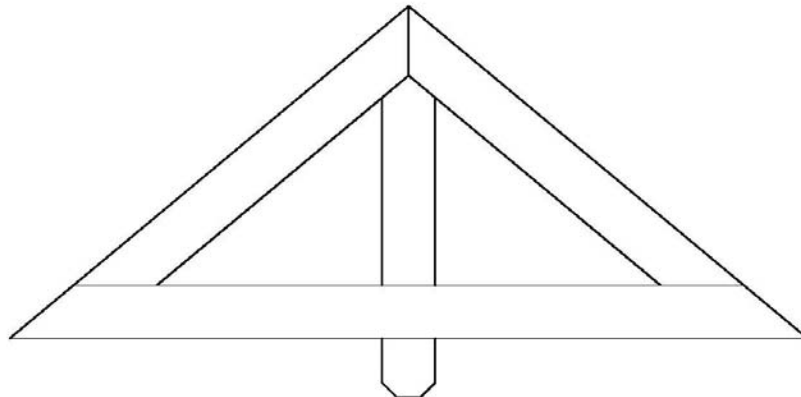
ANY STRUCTURES OVER 28' WIDE TO BE PRICED WITH 6X12 RAFTERS

**Your Dream ... Our Passion**



OVERHANG TRUSS  
STYLE 'A'

(Pending size, plates may be required)



OVERHANG TRUSS  
STYLE 'B'

(Pending size, plates may be required)

**Your Dream ... Our Passion**



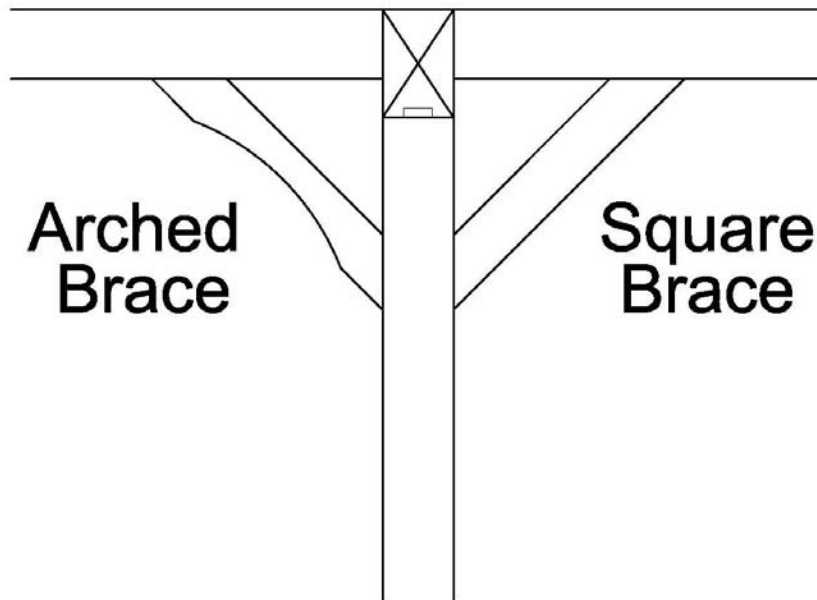
TIMBERHAVEN LOG & TIMBER HOMES, LLC

1081 Salem Church Road, Middleburg, PA 17842

**855.306.5678**

[www.TimberhavenLogHomes.com](http://www.TimberhavenLogHomes.com)

[www.LogHomeDesignCenter.com](http://www.LogHomeDesignCenter.com)



## ANGLE BRACE OPTIONS

**Your Dream ... Our Passion**