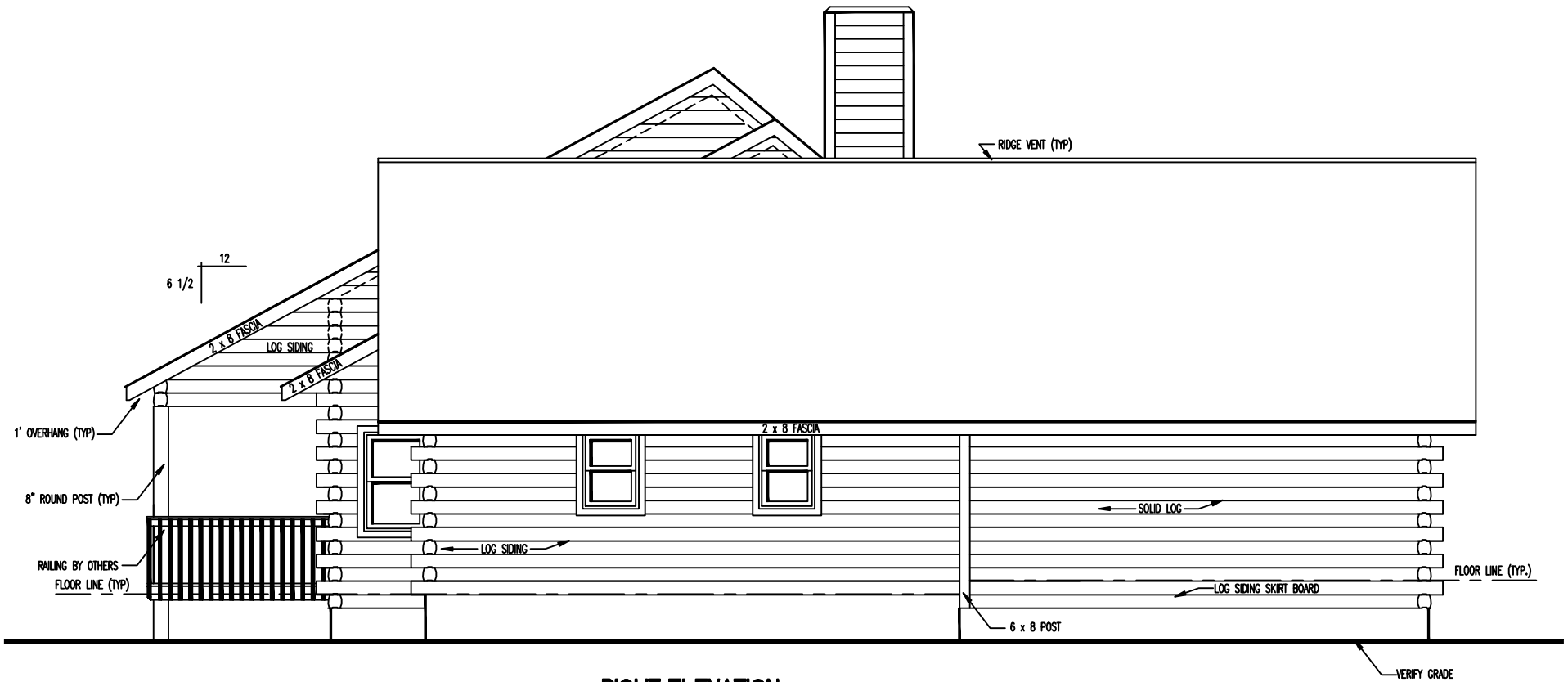


**REAR ELEVATION**

**\*\* NOTE : \*\***  
 EXTERIOR WINDOW TRIM REQUIRED AROUND PERIMETER OF DIAMOND & TRAPEZOID WINDOWS  
 SEE TRAPEZOID WINDOW DETAILS SHEET FOR ADDITIONAL INFORMATION & TRAPEZOID BRACING DETAIL.



**RIGHT ELEVATION**

MATERIALS AS SHOWN ARE FOR ILLUSTRATIVE PURPOSES ONLY, SEE QUOTE FOR ACTUAL MATERIALS SUPPLIED.





