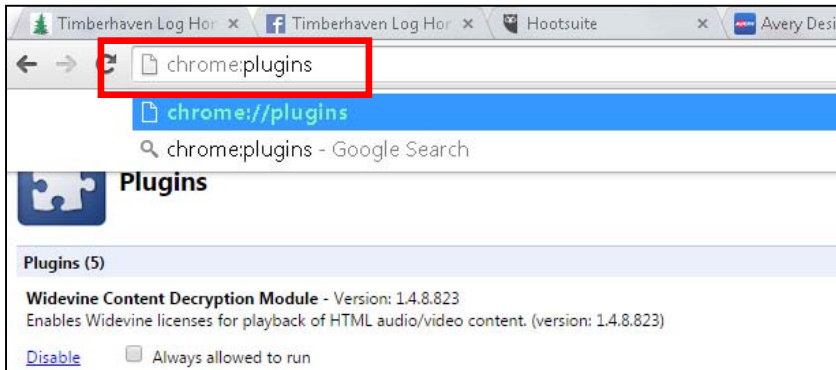


MODIFY BROWSER SETTINGS FOR INTERACTIVE FORMS

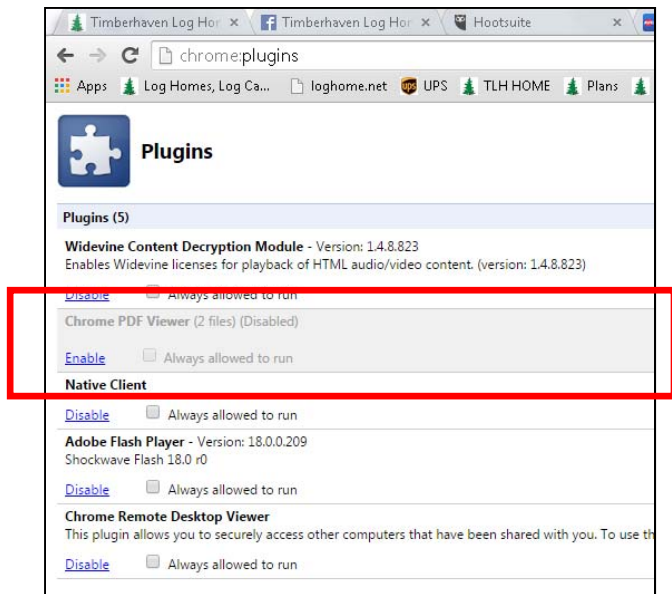
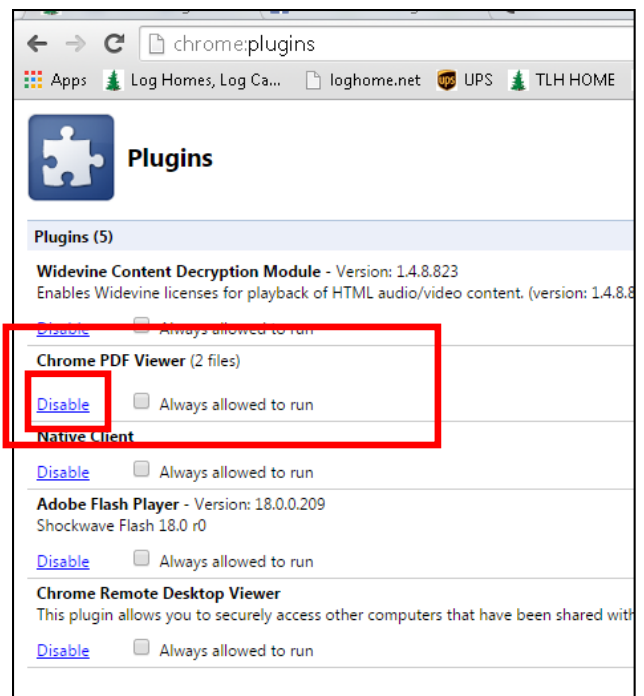


1. Open Chrome by double clicking the Chrome icon

2. In address line, type **chrome://plugins** Then hit **Enter**.



3. By default, **Chrome PDF Viewer** is enabled. Click the blue **Disable** link to disable the viewer. The plugin area is then grayed out and looks like this.



4. The forms will now be interactive for you.

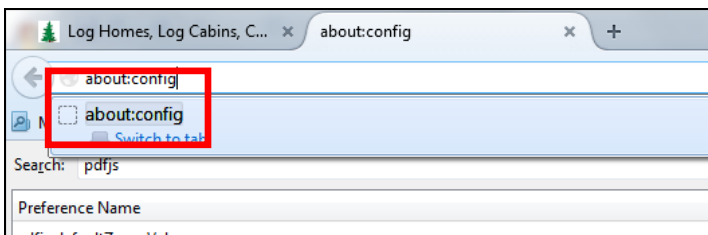
If you have questions or difficulties, please call Bobbi at 570-765-7293.

MODIFY BROWSER SETTINGS FOR INTERACTIVE FORMS

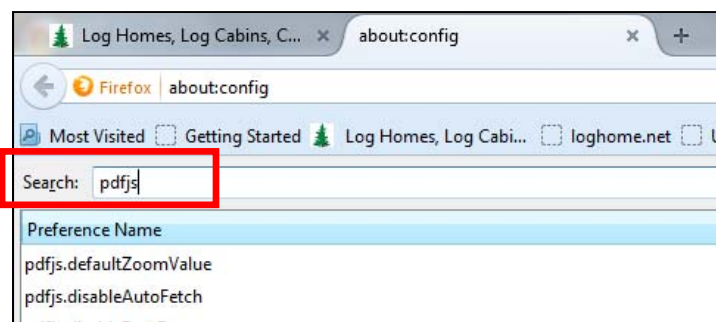


1. Open Firefox by double clicking the Firefox icon

2. In the address line, type **about:config**
Then hit **Enter**.



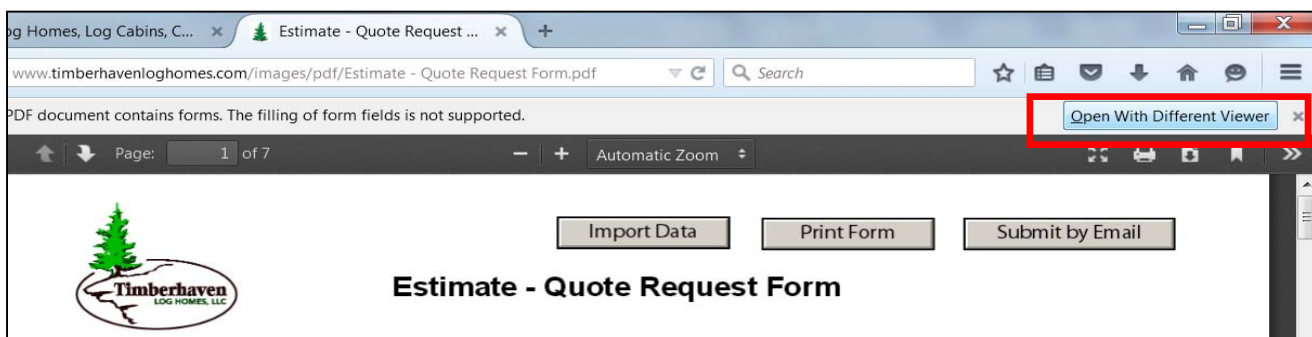
3. In the **Search** box, type **pdfjs**



4. Verify that **pdfjs** is disabled or **false** (It should be **false** by browser default; however, if the pdfjs is set as true, double click on it to toggle it to false).

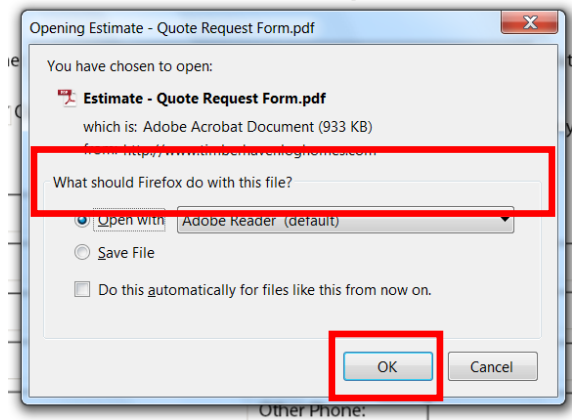
pdfjs.disableFormDecor	default	boolean	false
pdfjs.disableRange	default	boolean	false
pdfjs.disableStream	default	boolean	false
pdfjs.disableTextLayers	default	boolean	false
pdfjs.disabled	default	boolean	false
pdfjs.enableHandToolOnLoad	default	boolean	false

5. Log onto the Portal as per usual and open the desired form. When the form opens, click **Open With Different Viewer** button.



MODIFY BROWSER SETTINGS FOR INTERACTIVE FORMS

6. When the pop-up screen appears, choose **Adobe Reader** from the drop-down menu, then click **OK**. The screen will flash and the form will Reopen in Adobe Reader. The form will now be interactive for you.



If you have questions or difficulties, please call Bobbi at 570-765-7293.