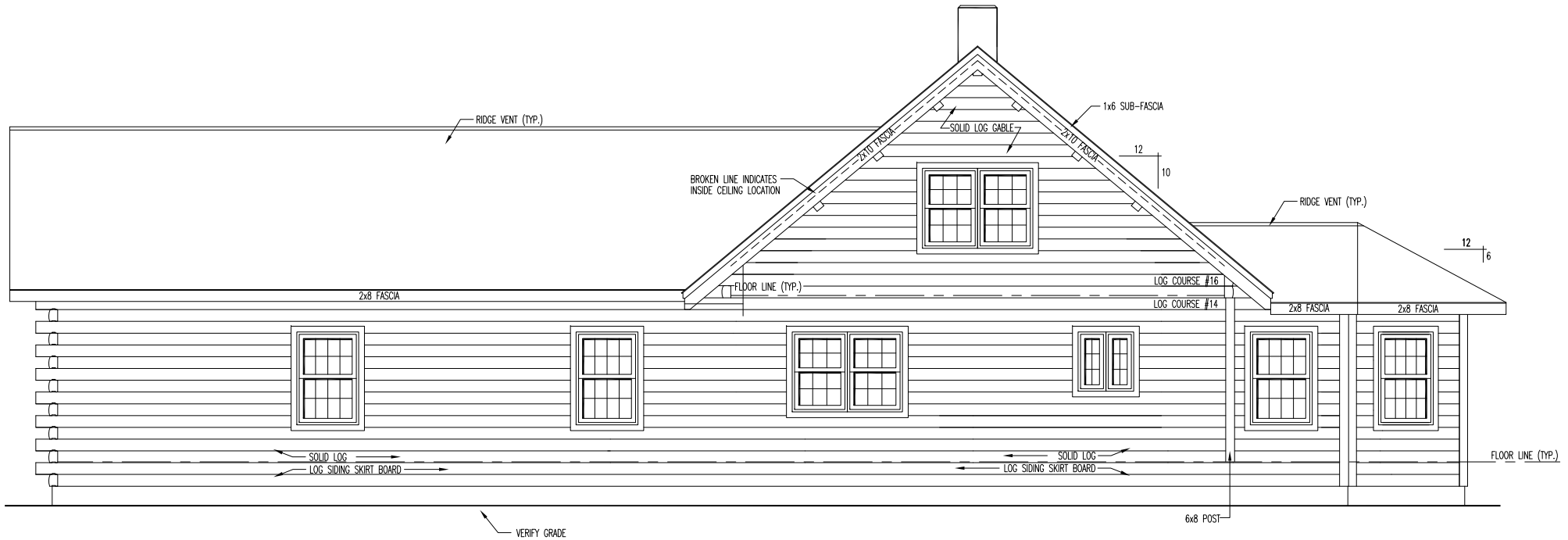


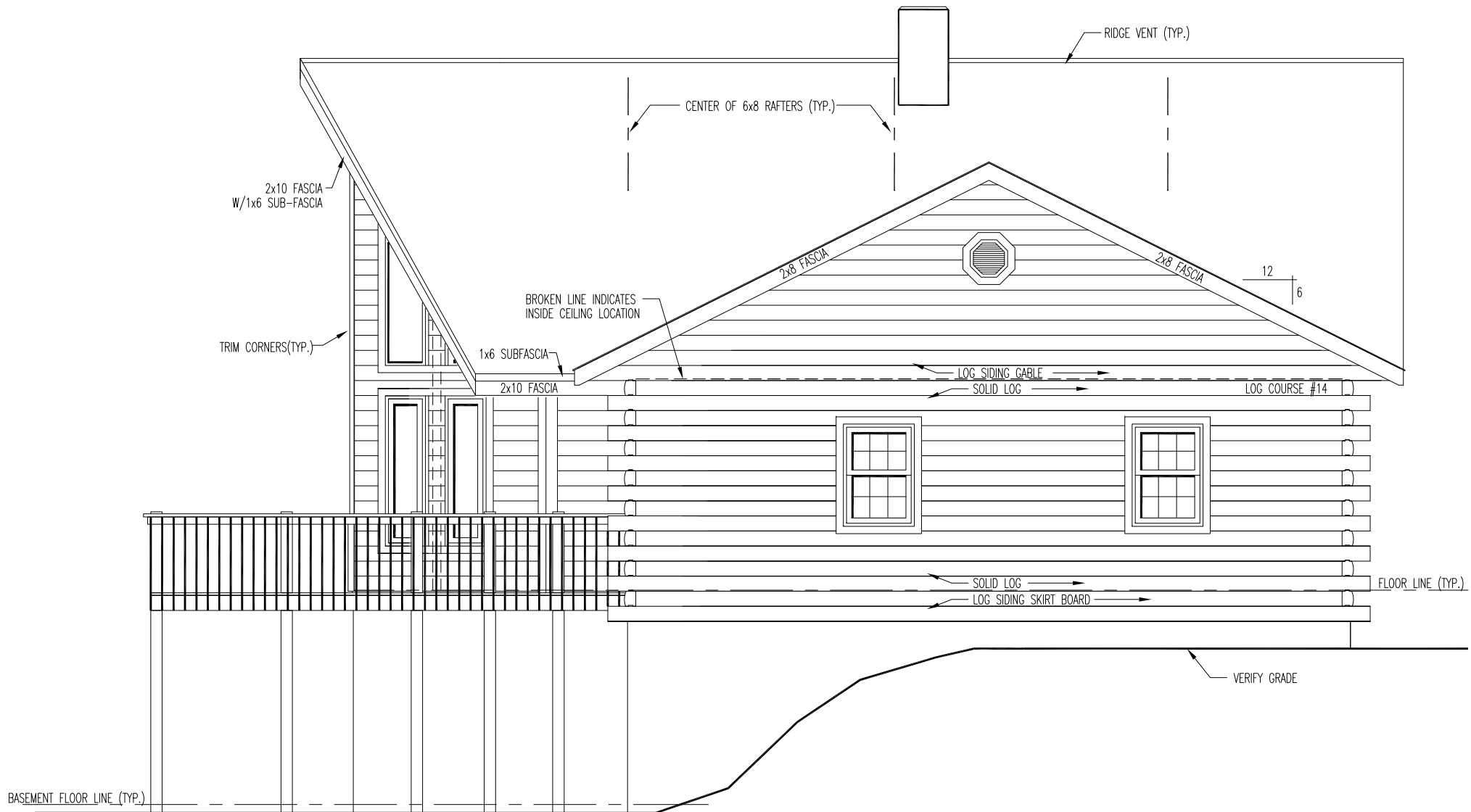
## FRONT ELEVATION

\*\* NOTE: \*\*

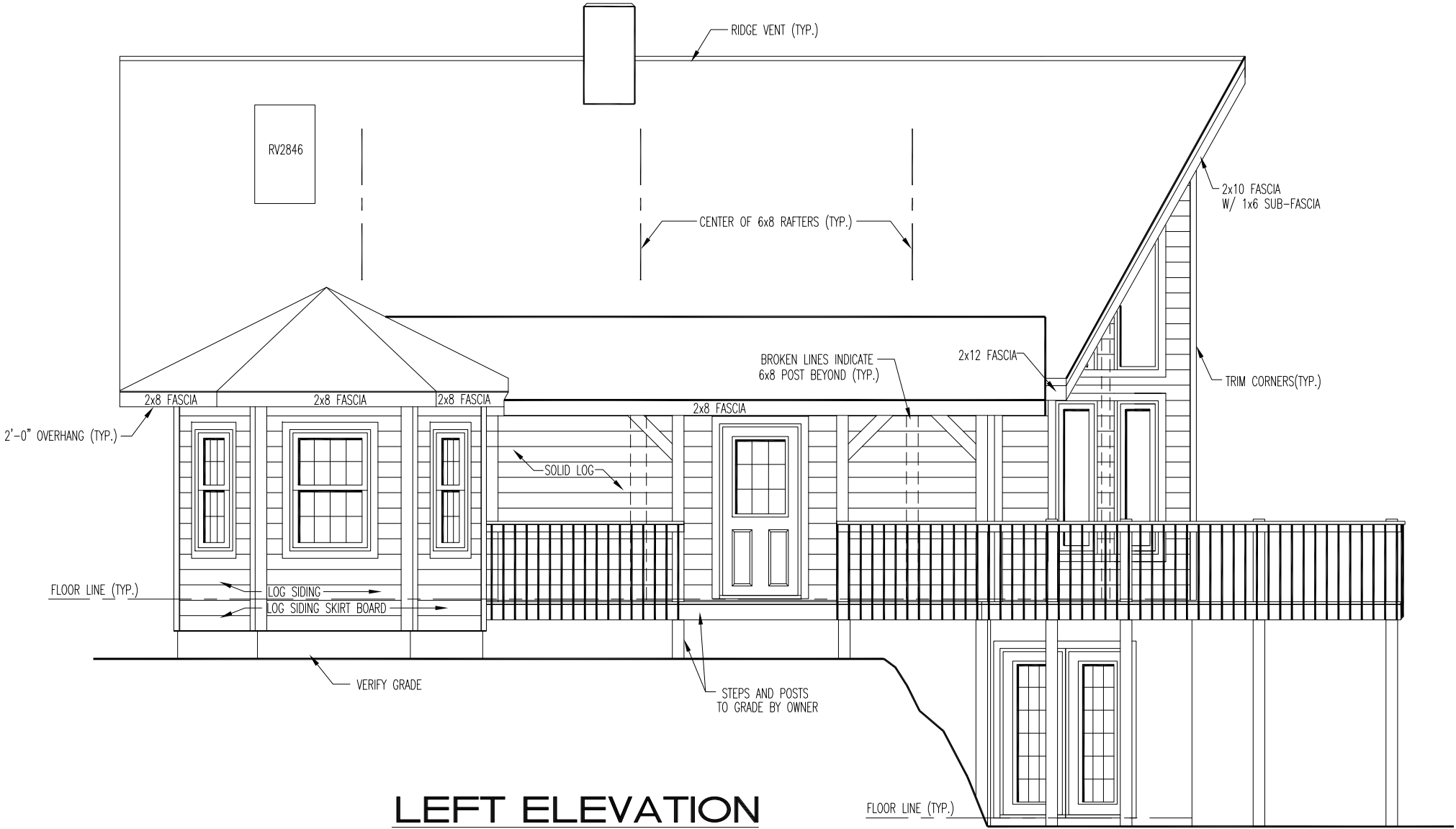
EXTERIOR WINDOW TRIM REQUIRED AROUND PERIMETER OF  
 FRONT WINDOWS AND TRAPEZOID WINDOWS - NO EXTERIOR  
 TRIM REQUIRED BETWEEN WINDOWS - AREA BETWEEN  
 WINDOWS IS LOG SIDING - SEE SPIRAL STAIR AND  
 TRAPEZOID WINDOW DETAILS SHEET FOR ADDITIONAL  
 INFORMATION & TRAPEZOID BRACING DETAIL



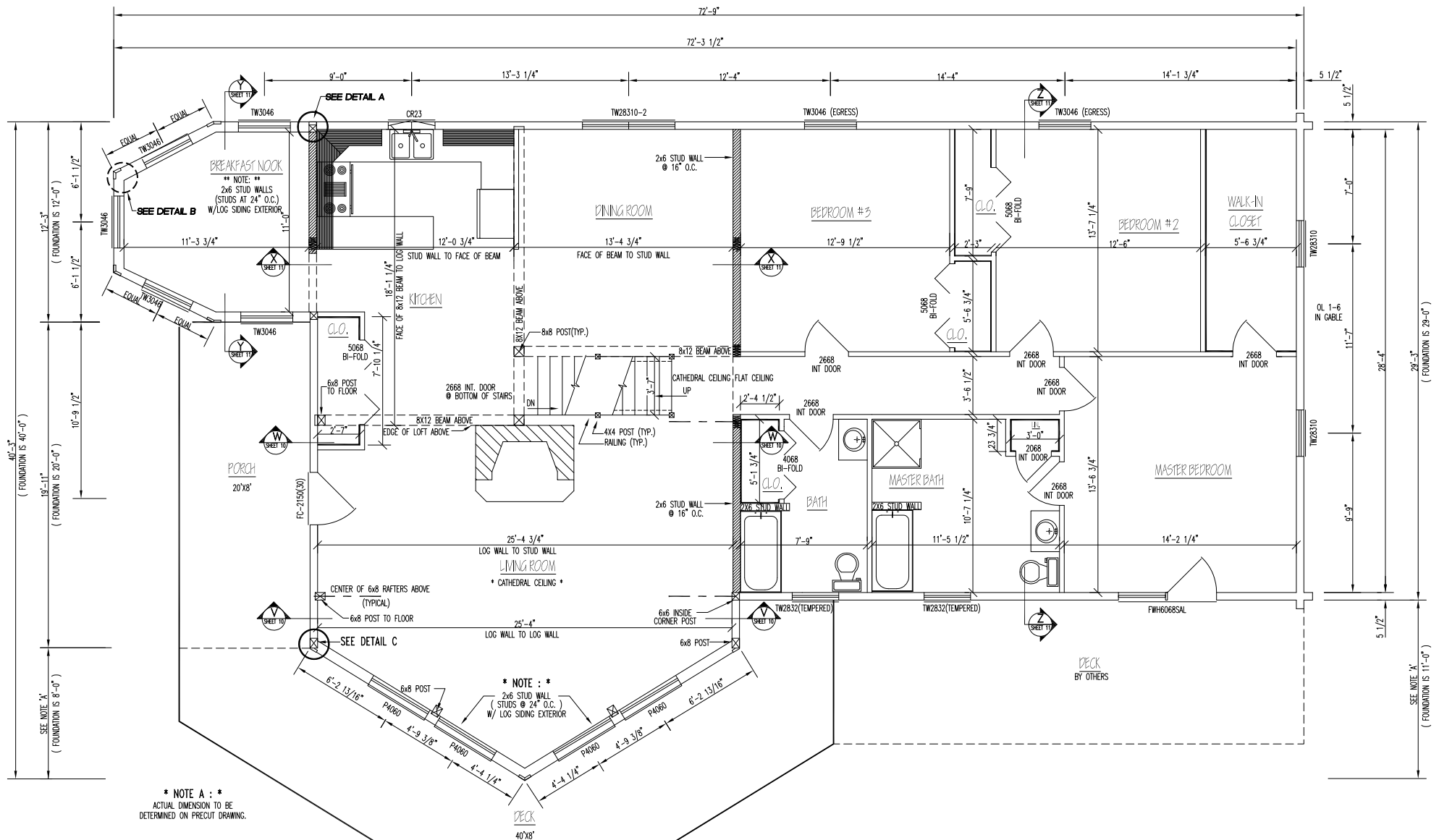
**REAR ELEVATION**



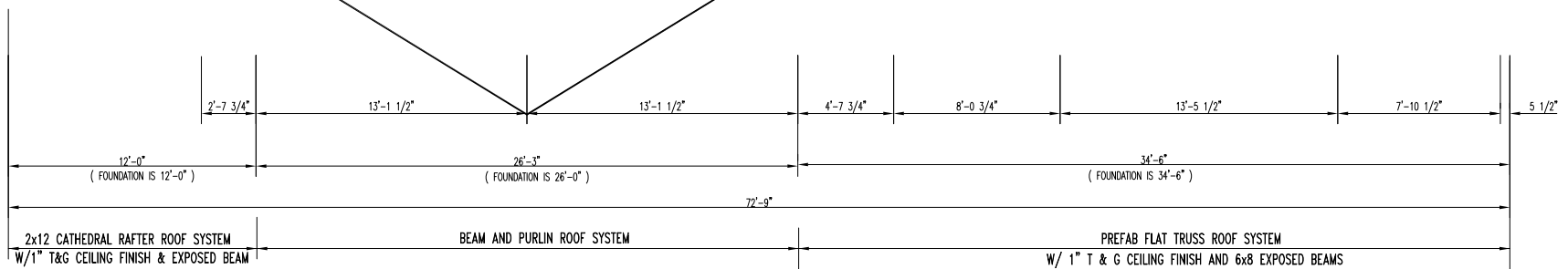
**RIGHT ELEVATION**



# LEFT ELEVATION



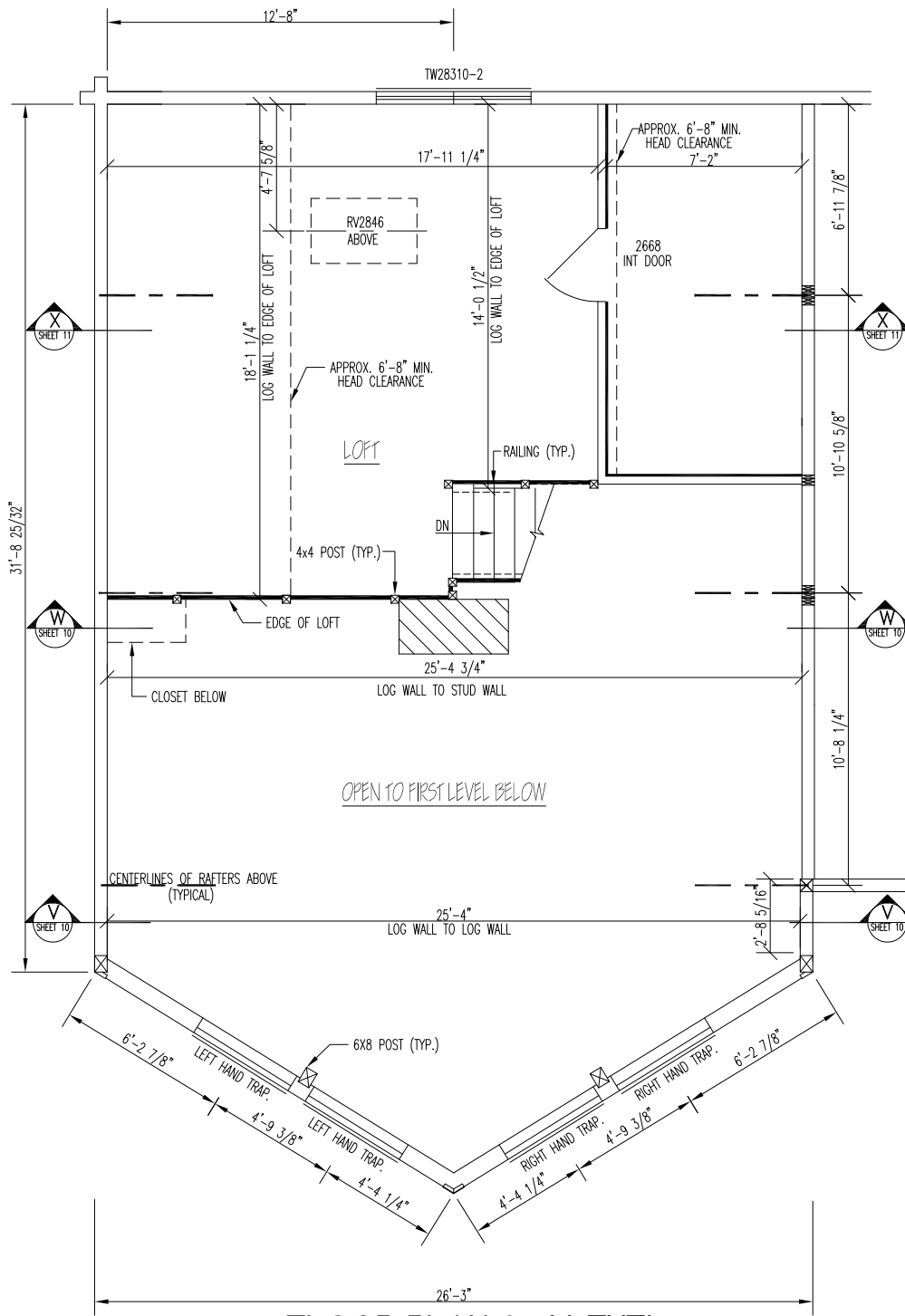
\* NOTE A : \*  
ACTUAL DIMENSION TO BE  
DETERMINED ON PRECUT DRAWING.



### FLOOR PLAN 1st LEVEL

FLOOR AREA = 2063 SQ. FT.

PORCH/DECK AREA = 710 SQ. FT.



**FLOOR PLAN 2nd LEVEL**

FLOOR AREA = 425 SQ. FT.