

SPECIAL: GALLERY OF POPULAR PLANS

LOG HOME LIVING®

DREAM DECOR

**15
BIG
IDEAS**
FOR SMALL
HOMES

HOW TO

CHOOSE a Log-Home Company
PLAN an Addition
BUILD on a Sloping Site

6 TIPS FOR
STYLISH
MAKEOVERS

+ 10 MAINTENANCE MYTHS

The Perfect Fit for a Narrow Lot

A site overlooking forested public land attracted Dorian and Susan to the west shore of Lake Tahoe. The land is close to the lake, skiing and mountain bike trails, making it a perfect spot for the couple to bring people together. “We see this home as an anchor for our family and friends,” Dorian says.

Why a log home: “We’ve always loved log homes in the mountains, and we have often vacationed in log cabins and lodges,” Dorian explains. He and Susan appreciate the character and natural beauty of wood. “It’s hard to put into words the pleasure that we get from walking into a log home.”

Most important features: For their mountain getaway, the couple’s “must have” list included a great room with a forest view, a master suite, bedrooms for their son and daughter, a bunk-room for four grandchildren and an office. The family loves to cook, so the design needed to include space to eat, drink and socialize.

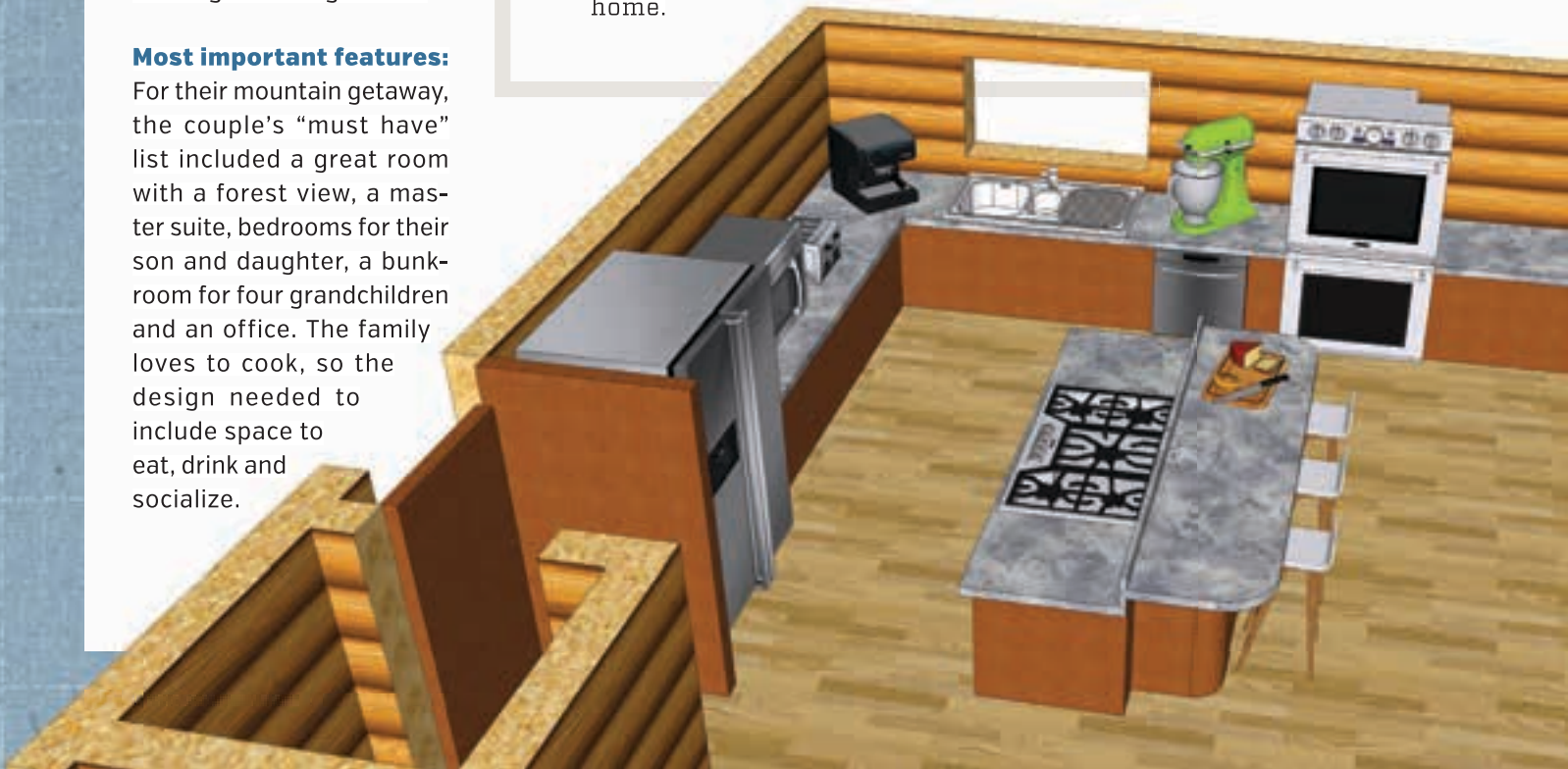
The Inside Scoop

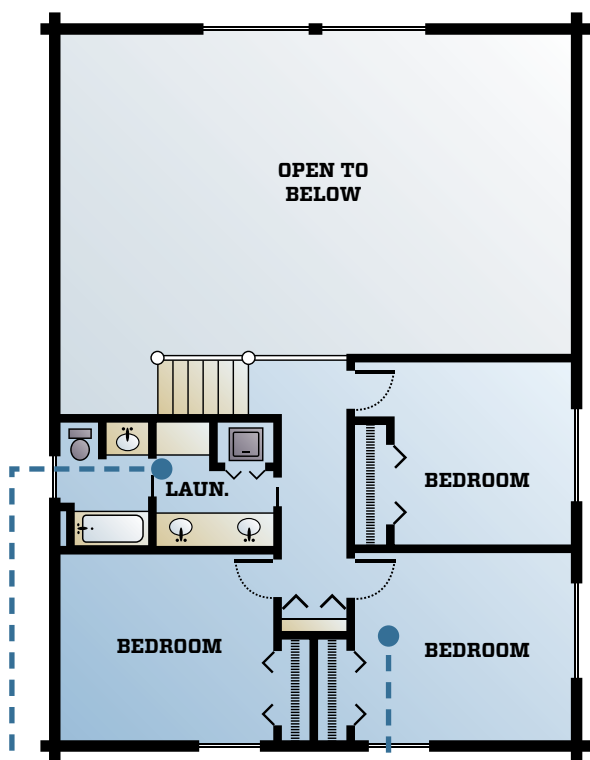
Building in the mountains of California calls for a home that can shoulder heavy snow loads and meet codes for earthquake protection. If you’re designing a home in snow country, consider these factors:

- **ROOF STRUCTURE.** Working with a designer without having a set budget wastes time. “Our objective is to build something they can afford and enjoy,” Mundy says about his company’s clients. Be honest with your designer about what you will spend.
- **LOG PROTECTION.** If a plan is too large overall, Mundy suggests shrinking it down proportionally to maintain your preferred overall exterior look. If you like a home with two symmetrical wings off a central great room, for example, you should size all of the spaces down, instead of just lopping off one wing to save on space.
- **ENTRYWAYS.** You’ll hear the cost of a home estimated on a per-square-foot basis. Keep in mind that some items (such as the cost of appliances and fireplace you’ve selected) remain fixed, no matter what size home you design. Cutting your home’s size in half won’t cut costs in half, but it would decrease the total price of the home.



Susan and Dorian

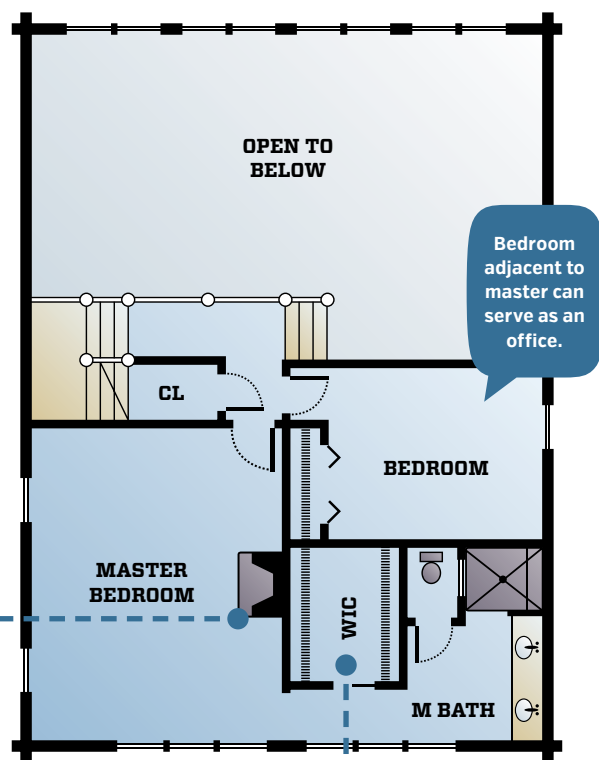




Second Upper Level

Laundry is located on the guest room level, just one flight up from the master bedroom.

A bunkroom accommodates grandchildren.



First Upper Level

A fireplace adds charm to the master bedroom.

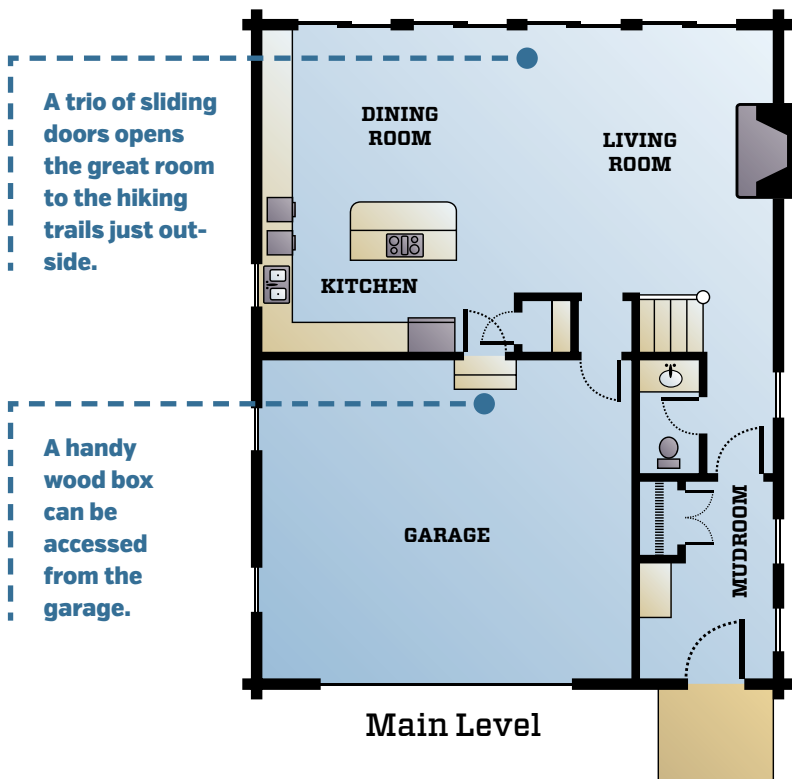
Master bath features a large walk-in closet.

PLAN SPECS

Square Footage: 2,550
Bedrooms: 5 **Baths:** 2.5

The Lowdown

Lynda Tompkins at Timberhaven Log Homes in Lewisburg, Pennsylvania, describes the three-level home that fulfills the couple's wish list. A built-in garage and an open living area occupy the home's first floor. The master suite sits above it, looking down over the great room. Three guest rooms are located on the third floor. The plan is open for entertaining, and the great room looks out over the woods.



Main Level