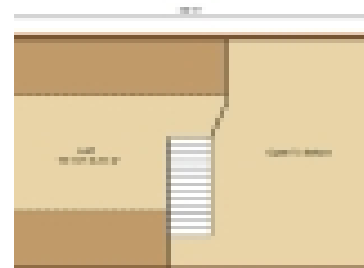


VALLEY VIEW II

<https://www.timberhavenloghomes.com>



The Valley View II log home design offers 1,331 square feet of total living space. The floor plan features 2 bedrooms and 1 bath. The log home plan provides a large cathedral ceiling that creates a roomy interior, and the kitchen and bedrooms are pleasingly spacious. The Valley View II log home package by Timberhaven [...]

- 2 beds
- 1 bath
- Log Home
- Cabin/Cottage, Craftsman, Traditional
- 1331 sq ft

Plan Details

Date added: Added 2 years ago **Design Style:** Cabin/Cottage, Craftsman, Traditional

Construction Type: Log Home **Area, sq ft:** 1331 sq ft

Bedrooms: 2 beds

Bathrooms: 1 bath

Half baths: 0 half baths



Related Plans

Related Plans: [es_my_listing layout="grid-3" posts_per_page="3" show_layouts="0" show_sort="0" show_page_title="0" show_total=0 prop_id="22078,20984"]

Request More Information

Request More Information: [gravityform id="20" title="false"] [gravityform id="8" title="false"]

