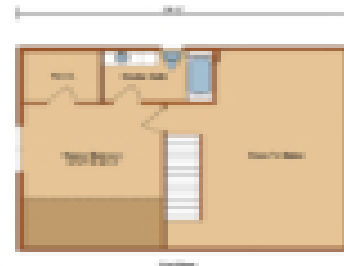
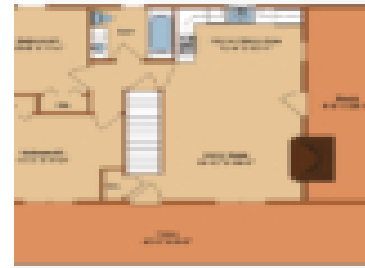


VALLEY VIEW I

<https://www.timberhavenloghomes.com>



The Valley View I log home design offers 1,331 square feet of total living space. The floor plan features 3 bedrooms and 2 baths. Distinctive styling abounds with this exciting log home plan, and combined kitchen, dining and living area are magnificently accentuated by the open ceiling above. The Valley View I log home package [...]

- 3 beds
- 2 baths
- Log Home
- Cabin/Cottage, Craftsman, Traditional
- Dealer Features, Featured Plans
- 1331 sq ft

Plan Details



Date added: Added 2 years ago **Design Style:** Cabin/Cottage, Craftsman, Traditional

Construction Type: Log Home **Status:** Dealer Features, Featured Plans

Area, sq ft: 1331 sq ft **Bedrooms:** 3 beds

Bathrooms: 2 baths **Half baths:** 0 half baths

Related Plans

Related Plans: [es_my_listing layout="grid-3" posts_per_page="3" limit="3" show_layouts="0" show_sort="0" show_page_title="0" show_total=0 prop_id="22078,20992"]

Request More Information

Request More Information: [gravityform id="20" title="false"] [gravityform id="8" title="false"]

