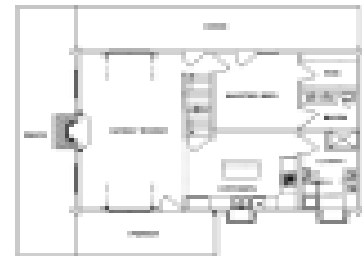


TOBIAS MODIFIED ASPEN HILL I

<https://www.timberhavenloghomes.com>



This modified Aspen Hill I features 3 bedrooms, 2 1/2 baths, and is built with Timberhaven's 6x8 kiln-dried Eastern White Pine logs. The logs are shaped into our most-popular D-shaped profile and include Mortise-and-Tenon corners. Plan modifications include: • Turn one of the upstairs bedrooms into a second master suite • Expand the decks to [...]

- 3 beds
- 2 baths
- Log Home
- Cabin/Cottage, Farmhouse, Traditional
- 1900 sq ft

Plan Details

Date added: Added 2 years ago **Design Style:** Cabin/Cottage, Farmhouse, Traditional

Construction Type: Log Home **Area, sq ft:** 1900 sq ft

Bedrooms: 3 beds

Bathrooms: 2 baths

Half baths: 1 half bath



Related Plans

Related Plans: [es_my_listing layout="grid-3" posts_per_page="3" show_layouts="0" show_sort="0" show_page_title="0" show_total=0 prop_id="20877,20908,22313"]

Request More Information

Request More Information: [gravityform id="20" title="false"] [gravityform id="8" title="false"]

