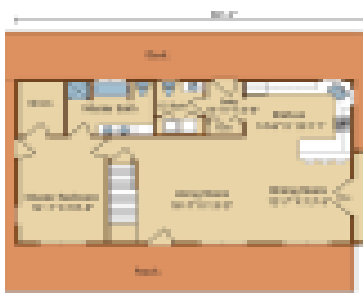


RIVERVIEW

<https://www.timberhavenloghomes.com>



The Riverview log home design offers 2,470 square feet of total living space. The floor plan features 3 bedrooms and 2.5 baths. The log home plan includes symmetrical front dormers with circle-top windows, spacious front porch and octagon sunroom. The eye-appealing exterior and a functional, roomy interior can be yours with the Riverview log home [...]

- 3 beds
- 2 baths
- Log Home
- Farmhouse, Traditional
- 2470 sq ft

Plan Details

Date added: Added 2 years ago

Construction Type: Log Home

Bedrooms: 3 beds

Half baths: 1 half bath

Design Style: Farmhouse, Traditional

Area, sq ft: 2470 sq ft

Bathrooms: 2 baths



Related Plans

Related Plans: [es_my_listing layout="grid-3" posts_per_page="3" show_layouts="0" show_sort="0" show_page_title="0" show_total=0 prop_id="22778"]

Request More Information

Request More Information: [gravityform id="20" title="false"] [gravityform id="8" title="false"]

