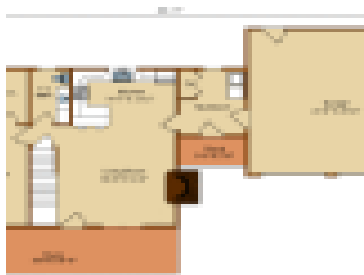


MOUNTAIN VIEW II

<https://www.timberhavenloghomes.com>



The Mountain View II log home design offers 1,849 square feet of total living space. The floor plan features 3 bedrooms and 2.5 baths. The log home plan provides a conveniently-located master bedroom suite and beautiful cathedral ceiling. Relax on the full length front porch or hideaway in the generous loft. All of this and [...]

- 3 beds
- 2 baths
- Log Home
- Cabin/Cottage, Craftsman, Farmhouse, Traditional
- 1849 sq ft

Plan Details

Date added: Added 2 years ago **Design Style:** Cabin/Cottage, Craftsman, Farmhouse, Traditional

Construction Type: Log Home **Area, sq ft:** 1849 sq ft

Bedrooms: 3 beds **Bathrooms:** 2 baths

Half baths: 1 half bath





Request More Information

Request More Information: [gravityform id="20" title="false"] [gravityform id="8" title="false"]

