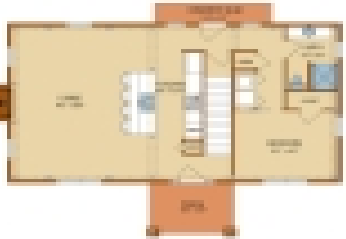


CRAFTSMAN

<https://www.timberhavenloghomes.com>



FIRST FLOOR PLAN



SECOND FLOOR PLAN

The Craftsman design features 1,473 total square feet of living space, 2 bedrooms and 2 full baths.

- 2 beds
- 2 baths
- Hybrid Home, Timber Frame Home/Post & Beam Home
- Craftsman, Traditional
- Featured Plans
- 1473 sq ft

Plan Details



Date added: Added 2 years ago

Construction Type: Hybrid Home, Timber Frame Home/Post & Beam Home

Area, sq ft: 1473 sq ft

Bathrooms: 2 baths

Design Style: Craftsman, Traditional

Status: Featured Plans

Bedrooms: 2 beds

Half baths: 0 half baths

Request More Information

Request More Information: [gravityform id="20" title="false"] [gravityform id="8" title="false"]

