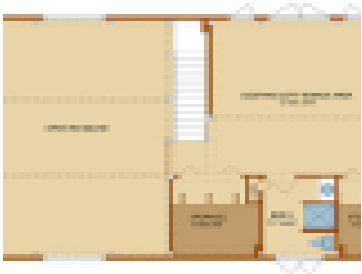
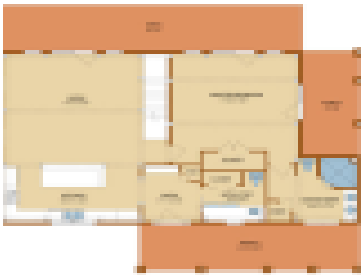


# COTTAGE

<https://www.timberhavenloghomes.com>



The Cottage timber frame design features 1,974 sq ft, 2 bedrooms and 2.5 baths. Its wide open floor plan features a soaring cathedral ceiling in the main living area. The right side of this modest timber frame design encompasses the master bedroom suite and private access to a spacious side porch. An abundance of natural [...]

- 2 beds
- 2 baths
- Hybrid Home, Timber Frame Home/Post & Beam Home
- Cabin/Cottage, Farmhouse, Traditional
- Dealer Features
- 1974 sq ft

## Plan Details



**Date added:** Added 2 years ago

**Design Style:** Cabin/Cottage, Farmhouse, Traditional

**Construction Type:** Hybrid Home, Timber Frame Home/Post & Beam Home

### Status: Dealer Features

**Area, sq ft: 1974** sq ft

**Bedrooms: 2 beds**

**Bathrooms:** 2 baths

**Half baths: 1** half bath

## Request More Information

**Request More Information:** [gravityform id="20" title="false"] [gravityform id="8" title="false"]

