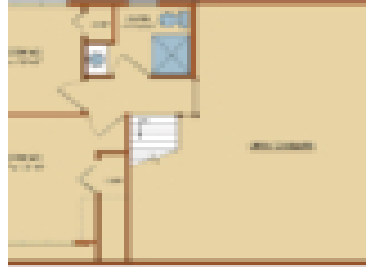
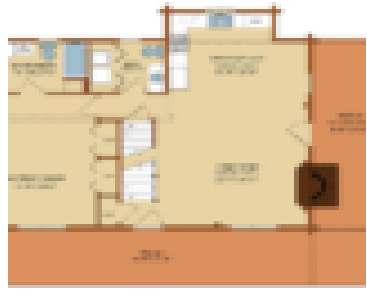


# CLEAR CREEK

<https://www.timberhavenloghomes.com>



The Clear Creek log home design offers 1,434 square feet of total living space. The floor plan features 3 bedrooms and 3 baths. The log home plan provides a Grand front entrance with a cathedral porch ceiling and massive King Post Truss. The diamond-shaped window accents the front entrance and provides a source of natural [...]

- 3 beds
- 3 baths
- Log Home
- Cabin/Cottage, Craftsman, Traditional
- 1434 sq ft

## Plan Details

**Date added:** Added 2 years ago    **Design Style:** Cabin/Cottage, Craftsman, Traditional

**Construction Type:** Log Home    **Area, sq ft:** 1434 sq ft

**Bedrooms:** 3 beds    **Bathrooms:** 3 baths

**Half baths:** 0 half baths



---

## Request More Information

**Request More Information:** [gravityform id="20" title="false"] [gravityform id="8" title="false"]

